

- Description
- Documents
- Learn
- Reviews
- FAQs

The Grove-Temperature&Humidity&Pressure&Gas Sensor(BME680) is a multiple function sensor which can measure temperature, pressure, humidity and gas at the same time. It is based on the BME680 module. The 4-in-1 function is integrated on such a small module, it will be very beneficial to apply on IOT or GPS devices.

Tip

We've released the [Seeed Gas Sensor Selection Guide](#), it will help you choose the gas sensor that best suits your needs.

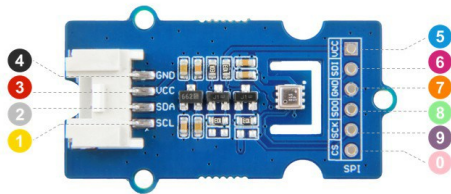
Features

- 4-in-1 for multiple measurement
- low consumption
- Wide measurement range
- Optional output:
Individual humidity, pressure and gas sensors can be independently enabled/disabled

Typical Applications

- Indoor air quality
- Home automation and control
- IOT device
- Weather forecast
- GPS enhancement(e.g. time-to-first-fix improvement, dead reckoning, slope detection)
- Indoor navigation(change of floor detection, elevator detection)
- Vertical velocity indication(risk/sink speed)

Pin Map



I2C

- ④ GND: connect this module to the system GND
- ③ VCC: you can use 5V or 3.3V for this module
- ② SDA: serial data
- ① SCL: serial clock

SPI

- ⑤ VCC: you can use 5V or 3.3V for this module
- ⑥ SDA: serial data input; data input/output in 3-wire mode
- ⑦ GND: connect the system GND with this module
- ⑧ SDO: serial data output; hi-Z in 3-wire mode
- ⑨ SCK: serial clock
- ⑩ CS: chip select, active low

Grove - Temperature, Humidity, Pressure and Gas Sensor (BME680)

SKU 101020513



Grove - Temperature, Humidity, Pressure and Gas Sensor (BME680),Barometer Sensor,VOC

- 1 +

US Warehouse



Add to Cart

Tags:

GAS SENSOR

GAS

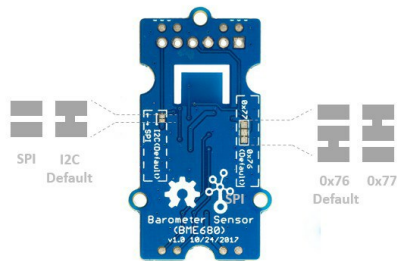
GROVE

Temperature

Humidity

Pressure

BME680



Technical details

Dimensions	40mm x20mm x7mm
Weight	G.W 9.1g
Battery	Exclude
Operating Voltage	3.3V/5V
Operating Range	-40~+85°C; 0-100% r.H.; 300-1100hPa
Humidity Absolute Accuracy	± 3%r.H. (20-80 %r.H.,25°C)
Humidity Resolution	0.008 %r.H.
Pressure Absolute Accuracy	± 0.6 hPa (300-1100 hPa, 0-65°C)
Pressure Resolution	0.18 Pa
Temperature Absolute Accuracy	± 0.5°C (25°C, At,25) ; ± 1°C (0-65°C, At,full)
Temperature Resolution	0.01°C
Digital Interface	I2C(up to 3.4MHZ)/ SPI(3 and 4 wire, up to 10MHZ)
I2C address	0x76(default)/ 0x77(optional)

Part List

Grove - Temperature, Humidity, Pressure and Gas Sensor (BME680)	1
Grove cable	1

ECCN/HTS

ECCN	EAR99
HSCODE	9025900090
USHSCODE	90230000
CE	1

Company

[Official Website](#)
[About Seeed](#)
[Solution](#)
[Distributors](#)
[Careers](#)
[Contacts](#)

Help Center

[How to Get Help](#)
[FAQ](#)
[Technical Support](#)
[Shipping & Order](#)
[Warranty & Returns](#)
[Payment Information](#)

Community

[Project Hub](#)
[Forum](#)
[Blog](#)
[Wiki](#)

Stay Tuned

