

## Effectively Evaluate Operation and Performance

### Overview

The RMI Alchemy™ Solutions Pb1000® development board functions as the development board for the RMI Alchemy™ Solutions Au1000™ high-performance, low-power System-on-a-Chip (SoC). This highly versatile system serves multiple purposes:

- Chip evaluation
- Software development
- Example of hardware systems design using the Au1000 SoC

The Pb1000 effectively allows the user to evaluate the operation and performance of the Au1000 SoC.

### Features

#### Memory Devices

- 64MB of 100MHz SDRAM
- 8MB Flash (AMD Flash Am29DL323DB)
- 256KB of SRAM
- Connections for PromICE ROM Emulator\*

#### Expansion

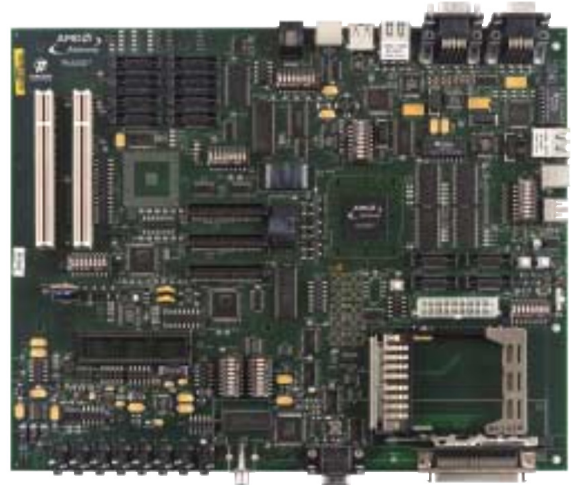
- Two PCMCIA Expansion Connectors

#### Debug Assist Features

- YAMON Monitor/Debugger
- EJTAG Connection to Au1000
- Logic Analyzer Connectors
- LEDs for Visual Status of System Activity
- User Settable Switches

#### Software Included

- YAMON Monitor/Debugger in Flash
- Peripheral Initialization Routines
- Sample Code/Diagnostics
- OS Drivers, Initialization Code
- Evaluation Tools - Windows® CE.NET, VxWorks and Linux



#### YAMON

- Assembly/Disassembly
- Memory Modify/Display
- Register Modify/Display
- S-record, Download via Serial and Ethernet

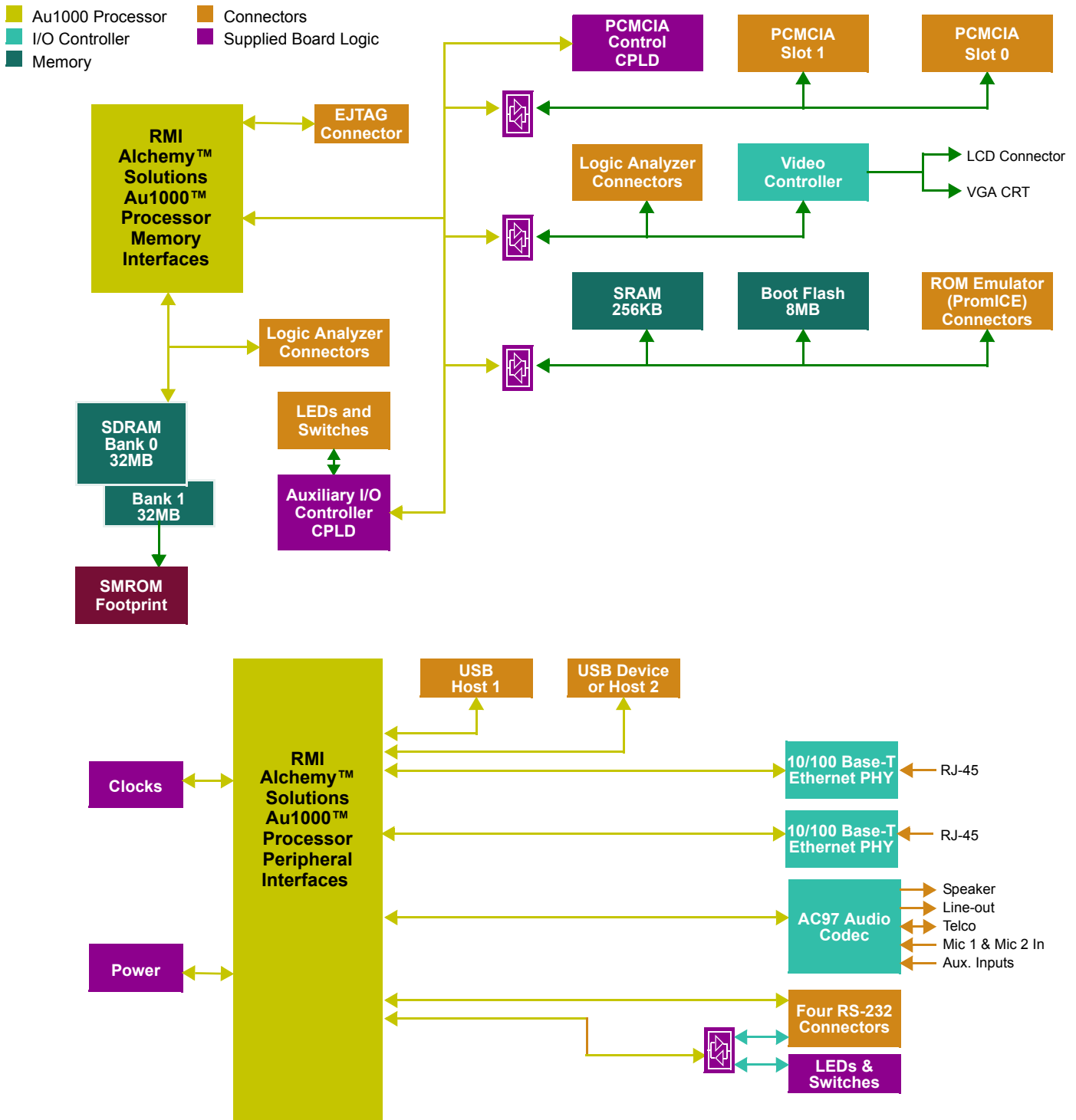
#### On-Board Peripherals

- Epson SED 1356 Graphics Controller with CRT and TV Out
- Two 10/100 Ethernet PHYs
- USB Host/Device Port
- AC97 CODEC Stereo Audio
- Four Serial Ports
- IrDA Transceiver (SIR, MIR, and FIR)

#### System Documentation

- User's Guide
- Complete Schematics
- Complete Bill of Material

# RMI Alchemy™ Pb1000® Development Board



## About RMI

Raza Microelectronics, Inc. (RMI®) is a fabless semiconductor company providing highly-integrated feature-rich products ranging from power-optimized System-on-a-Chip (SoC) solutions to High-Performance Processors for the Digital Consumer, Wireless, Networking and Security markets. RMI offers the most advanced and most complete MIPS-Based™ processing solutions with both 32/64-bit architectures supporting frequencies from 300MHz to 1.2GHz. The company is headquartered in Cupertino, CA with offices in Texas, India, Korea, Japan and China. More information about RMI can be found on the company's website at [www.RazaMicro.com](http://www.RazaMicro.com)

RMI  
18920 Forge Drive  
Cupertino, CA 95014  
USA

PHONE (408)434-5700  
FAX (408)434-5777

© 2006 Raza Microelectronics, Inc. All right reserved. RMI and Pb1000 are registered trademarks and RMI Alchemy and Au1000 are trademarks of Raza Microelectronics, Inc. Windows is a registered trademark of Microsoft Corporation in the United States and/or other jurisdictions. Other product names used in this publication are for identification purposes only and may be trademarks of their respective companies.