

Customer Information Sheet

DRAWING NO: M50-315XX22

SHEET 2 OF 2

IF IN DOUBT - ASK

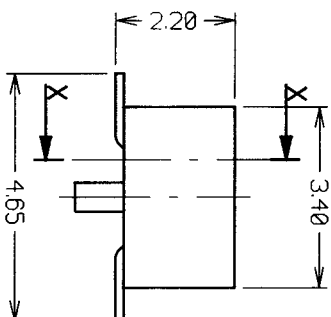
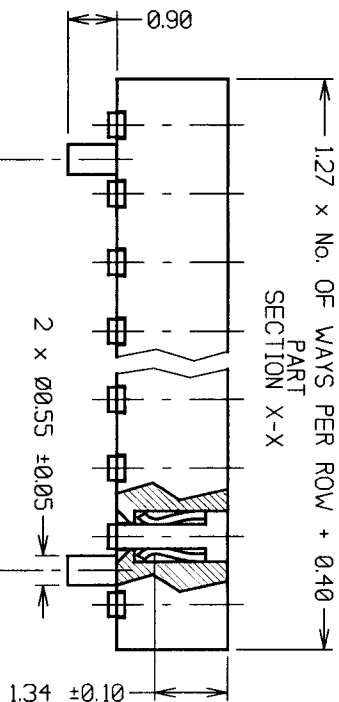
(C)

NOT TO SCALE

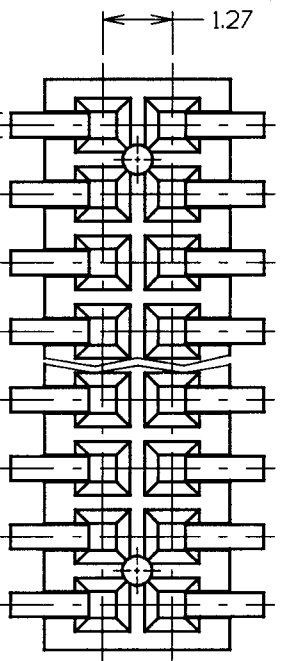
THIRD ANGLE PROJECTION

ALL DIMENSIONS IN mm

PART
SECTION X-X



1.27 x (NO. OF PITCHES PER ROW - 1)



RECOMMENDED
PCB LAYOUT

1.27 x (NO. OF PITCHES PER ROW - 1)

NOTES:
1. ALL TOLERANCES ARE ±0.25
UNLESS OTHERWISE STATED.

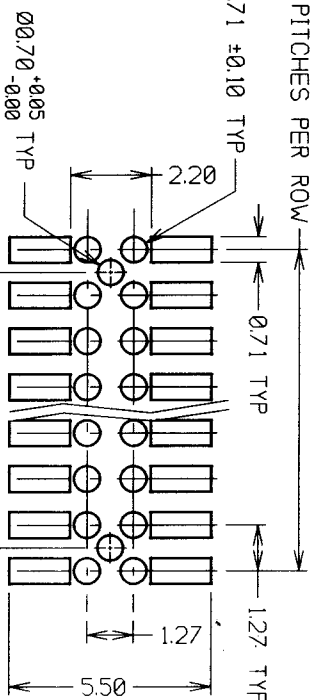
ORDER CODE:

M50-315XX22

No. OF WAYS PER ROW
03 TO 50

FINISH: SELECTIVE GOLD

1.27 x (NO. OF PITCHES PER ROW - 1)



SPECIFICATIONS:

MATERIAL:

MOULDING - 30% GLASS-FILLED NYLON-6T UL94V-0

CONTACTS - PHOSPHOR BRONZE

FINISH:

CONTACTS - Ø02-Ø08u GOLD ON CONTACT AREA.

2.5-38u TIN ON TAILS

ELECTRICAL:

CURRENT RATING - (ALL CONTACTS ARE

ELECTRICALLY LOADED) - 1 AMP

CONTACT RESISTANCE - 15 MILLIOHMS MAX

INSULATION RESISTANCE - 1000 MEGOHMS MIN @ 250V

DIELECTRIC WITHSTANDING - 1000V AC MIN (1 MINUTE)

MECHANICAL:

CONTACT RETENTION - 25N MIN

INSERTION FORCE - 20N MAX

WITHDRAWAL FORCE - 0.3N MIN

SOLDERABILITY - 260°C FOR 3 SECONDS

DURABILITY - 25 CYCLES

ENVIRONMENTAL:

TEMPERATURE RANGE - -55°C TO +105°C

PACKING:

TUBE

FOR COMPLETE SPECIFICATION, SEE COMPONENT
SPECIFICATION C029XX (LATEST ISSUE).

HARWIN

HARWIN INC

USA

HARWIN PLC

UK

HARWIN PTE

SINGAPORE

TEL: (812) 542 2546

TEL: 023 9237 0451

TEL: 65 7794909

FAX: (812) 542 2541

FAX: 023 9231 4590

FAX: 65 7793868

THIS DRAWING AND ANY
INFORMATION OR DESCRIPTIVE
MATTER SET OUT HEREON ARE
CONFIDENTIAL AND CORRIGHT
PROPERTY OF THE HARWIN
GROUP AND MUST NOT BE
DISCLOSED UNLESS ORDERED
OR OTHERWISE FOR ANY
OTHER PURPOSE WITHOUT
THEIR WRITTEN PERMISSION

TOLERANCES
X - ±1mm
X.X - ±0.25mm
X.XX - ±0.10mm
X.XXX - ±0.01mm
ANGLES - ±5°
UNLESS STATED

MATERIAL:
SEE ABOVE

FINISH:
SEE ABOVE

TITLE:
1.27mm PITCH DIL SMT VERT.
LOW-PROFILE SOCKET ASSY

DRAWING NUMBER:
M50-315XX22

SHT
2 OF 2

NAME	ISS	DATE	C/NOTE
JAE	5	17/01/03	7252
APPROVED:			
CHECKED:			
DRAWN:			
CUSTOMER REF:			
ASSEMBLY DRG:			