

- Home
- Custom Wall Plates
- Custom Panels
- Custom Cables
- Custom Enclosures
- Pelican Case Panels
- Seahorse Case Panels
- Custom Rack Mount Solutions
- Machining Services

- Stock Wall Plates
- Enclosures
- Panel-Mount Cables
- USB Cables
- FireWire Cables
- Video Cables
- Video Electronics
- Keyboard & Mouse
- Audio Cables

Networking

- Patch Cables
- Switches & Cards
- Network Installation

- Fiber Optic
- Wireless Products
- SCSI
- Serial & Parallel
- Manual Switches
- Other Data Cables
- Power Cables
- Server Racks
- Clearance & Specials

- Contact Us
- Support
- Order Status
- Tech Info
 - USB Info
 - USB 3 Explained
 - USB Type-C Explained
 - DVI Info
 - HDMI Info
 - DisplayPort Info

(more articles)

Panel-Mount Ethernet RJ45 CAT-6

Categories:

> [Patch Cables](#), [Panel-Mount Cables](#)

Offer network access anywhere with our panel-mounting CAT6 patch cable. Custom-fabricated to mount in our various face plates, these cables offer a clean and convenient connection to your RJ45 Ethernet network without any termination or punch-down blocks.



Related Products



Ethernet Cat-6 Gigabit Patch Cable



Panel-Mount Ethernet RJ45 CAT-5e



RJ45 Ethernet Port Cover

More Information

Custom Wall Plates & Panel-Mount Cables

[Technical Info Home](#)



1771-01C	Ethernet CAT-6 Panel-Mount Ext	1 ft	25 in stock	+ Add to cart
1771-02C	Ethernet CAT-6 Panel-Mount Ext	2 ft	194 in stock	+ Add to cart
1771-03C	Ethernet CAT-6 Panel-Mount Ext	3 ft	157 in stock	+ Add to cart
1771-04C	Ethernet CAT-6 Panel-Mount Ext	4 ft	1047 in stock	+ Add to cart
1771-06C	Ethernet CAT-6 Panel-Mount Ext	6 ft	378 in stock	+ Add to cart
1771-10C	Ethernet CAT-6 Panel-Mount Ext	10 ft	290 in stock	+ Add to cart
1771-15C	Ethernet CAT-6 Panel-Mount Ext	15 ft	103 in stock	+ Add to cart
1771-25C	Ethernet CAT-6 Panel-Mount Ext	25 ft	87 in stock	+ Add to cart
1771-00C	Ethernet CAT-6 Panel-Mount Ext	Custom build at + per foot.		+ Add to cart

The DataPro CAT6 panel mount RJ45 cable is a standard network patch cable that terminates into a bulkhead mountable female RJ45 connector. This secure and strain-resistant mount is sized for installation on our [face plates](#) without any on-site termination. These stock cables now feature a sturdy molded PVC hood with embedded nuts.

This is the perfect way to wire 10/100/1000/10000 networking easily and conveniently into any wallplate or other surface. All stock 1771 cables are Cat-6 certified for use with up to 10-Gigabit network speeds.

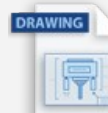
These cables are CL rated for in-wall use.

Note: Only our stock lengths and custom cables under 25 feet feature a molded panel-mount hood. Longer lengths and shielded custom cables are built with a bulkhead-mounting terminal block, but have identical mounting holes to the molded connectors. [\(Picture of shielded version\)](#)

Our panelmount CAT-6 cables have a longer molded hood than our [panelmount CAT-5e cables](#), but are rated at Category 6 for up to 10000-base-T (10G-Base-T) speeds.

Technical Documents

☐ I agree to the [Terms of Service](#).

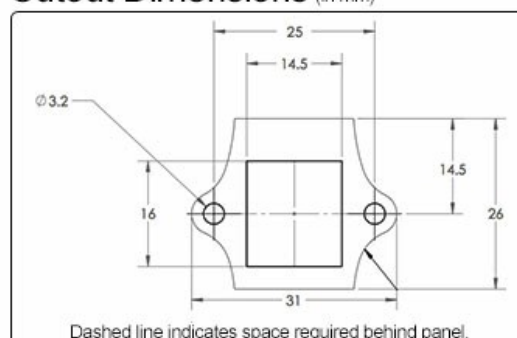


DOWNLOAD



DOWNLOAD

Cutout Dimensions (in mm)



[Click here for PDF version](#)



VISA    **SEPA** **PayPal**

[FAQ](#) | [Terms & Conditions](#) | [Privacy Policy](#) | [Cookie Statement](#)
© 1986-2017 DataPro International Inc., Seattle, WA