

It's All About Your Data

FastTrak S150™ TX Series

RAID Cards for Serial ATA/I50 Hard Drives

- ⌘ **Cost-Effective High-Performance RAID Solution**
- ⌘ **Use New Serial ATA/I50 Hard Drives**
- ⌘ **Build RAID 0, I, and 0+I Arrays**
- ⌘ **Accelerates Data Throughput, Adds Data Protection**

Maximize ATA RAID Performance with Serial ATA Drives

Serial ATA hard drives take advantage of the latest interface standard, delivering blistering transfer speeds of up to 150MB/sec. Now, Promise Technology, the leader in ATA and ATA RAID controllers, brings you the FastTrak™ S150 TX Series of Serial ATA RAID cards—a family of controller cards that provides high-performance, low-cost ATA RAID technology using new Serial ATA hard drives.

With the FastTrak S150 TX4, you can attach up to four Serial ATA drives to create ultra-fast RAID arrays. For an easy upgrade path, the FastTrak S150 TX2plus allows you to integrate new or existing Ultra ATA drives* with the latest Serial ATA drives as part of your new RAID storage subsystem.

By choosing Serial ATA for your RAID system, you get more than an advanced ATA drive. The Serial ATA standard incorporates highly anticipated features that are ideally suited for ATA RAID use such as longer, thinner cables, eliminating cable-routing problems and increasing air circulation. Serial ATA also simplifies drive configuration, eliminating installation hassles and improving multi-drive performance.

Gain the Promise RAID Advantage

By combining a Promise controller card with your ATA hard drives, you can gain the incredible performance and extraordinary benefits of a high-end RAID system at a fraction of the cost. By leveraging a data-striping configuration (RAID 0), your data is spread across multiple drives for faster storage performance, dramatically increasing data throughput—up to 266MB/sec¹—and combining the storage capacity of the disks. With a data-mirroring configuration (RAID I), your data is duplicated on multiple drives, delivering exceptional reliability and data protection if a drive fails. Using four drives, you can also set up a combination configuration (RAID 0+I) that offers the benefits of both schemes. Regardless of which configuration you choose, Promise ATA RAID cards are engineered to deliver premier performance.

With Promise Technology's user-friendly software, RAID setup and management couldn't be easier. Built-in, menu-driven FastBuild™ software guides users to create arrays. Promise Array Management software offers visual administration tools to monitor and maintain your advanced storage subsystem (controller, drives, arrays) locally or across a network.

* Supports Ultra ATA/133 and ATA/100

¹ Data transfer rates may vary depending on drive make, motherboard, and PCI bus speed



FastTrak S150™ TX2plus

- ⌘ 2 Serial ATA/I50 ports
- ⌘ 1 Ultra ATA/I33 channel

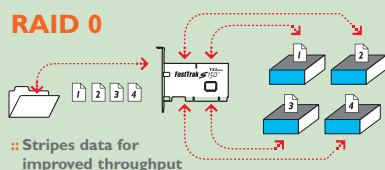


FastTrak S150™ TX4

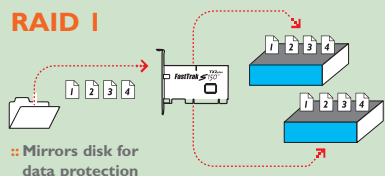
- ⌘ 4 Serial ATA/I50 ports



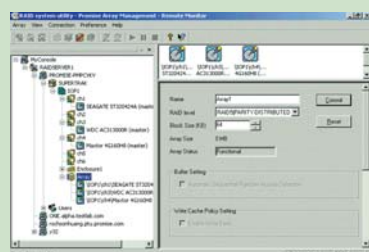
RAID 0



RAID 1



Sophisticated Array Monitoring Tools



Promise Array Management (PAM) monitoring software offers professional management tools in a simple-to-use, straightforward format. PAM works locally or via network TCP/IP connection to monitor FastTrak arrays. Information windows appear during critical and user-specified events. PAM can even be configured to send e-mail notification should an array error occur.

The Leader in SATA RAID

Promise Technology, Inc., recognized as the originator and worldwide leader of ATA RAID since 1997, has offered high-performance solutions for PC storage since 1988. Today the world's biggest OEMs and resellers look to Promise for ongoing innovations in ATA RAID design as the company continues to lead with the most powerful and economical alternatives to traditional RAID controllers and subsystems.

www.promise.com

Serial ATA: Optimal for RAID

Serial ATA with the FastTrak S150 Series controller provides the optimal solution for ATA RAID. Serial ATA supports cables that are up to one meter long and substantially thinner, eliminating cable-routing problems and increasing air circulation. Serial ATA implements technology that improves data transmission, and Serial ATA drives deliver the highest throughput of any ATA drive currently available. Also, Serial ATA uses a point-to-point configuration topology, eliminating master/slave bus sharing, simplifying drive configuration, and improving multi-drive system throughput.

Widespread Drive Compatibility

Promise RAID solutions provide you with ultimate flexibility in selecting your hard drives and configuring your RAID system. Promise works with major drive manufacturers worldwide to continually test their latest drives to ensure compatibility. The Promise BIOS recognizes and sets each drive type and device for optimal performance. Promise cards also employ sophisticated data handling techniques to make data transfers more efficient without overloading the host system CPU.

Specifications

Device Support	TX4: (4) Serial ATA/150 Drives TX2plus: (2) Serial ATA/150 Drives; (2) Ultra ATA/133 Drives
Drive Support	Serial ATA/150, Ultra ATA/133 [†] , Ultra ATA/100 [†]
RAID Levels Supported ^{††}	RAID 0+1 striping/mirroring; RAID 1 mirroring; RAID 0 striping, JBOD
PCI Bus	32-bit 33/66MHz PCI bus; PCI 2.3 compliant
Data Transfer Rate ^{**}	Up to 266MB/sec (66 MHz PCI); Up to 133MB/sec (33 MHz PCI)
FastBuild™ BIOS	Optimizes drive performance by drive type; flashable for future upgrades; supports multiple arrays; boots system from any array; BBS compliant; setup menus for custom array creation
48-bit LBA Support	Recognizes drive capacities exceeding 137GB each
Data Protection Features	Mirrors data to second drive or drive pair for RAID 1 and RAID 0+1; offers hot spare support for instant rebuild of failed drive in 2-drive RAID 1
Advanced Data Features	Bus mastering offloads data I/O handling from host CPU; CRC error-checking of Serial ATA and Ultra ATA drives for data reliability during transfers; tagged command queuing and elevator seek for optimized data handling
Promise Array Management	Monitors status of arrays, hard drives, and controller via TCP/IP; warns of drive failure; allows rebuilds of mirrored arrays; synchronizes data in fault-tolerant arrays; email notification for specified array events; S.M.A.R.T.-compatible status reporting
ACPI Support	S1, S3, & S4
Operating Systems ^{**}	Windows 98/Me/NT4/2000/XP, RedHat Linux, SuSE Linux
Limited Warranty	3 Years

[†] FastTrak S150 TX2plus only

^{††} FastTrak S150 TX2plus does not support using a RAID 1 array with a master and slave drive on the parallel port

^{*} Data transfer rates may vary depending on drive make, motherboard, and PCI bus speed

^{**} Check www.promise.com for latest operating system drivers

©2003 Promise Technology, Inc.

Specifications subject to change without notice.

Promise USA

1745 McCandless Drive
Milpitas, CA 95035
Tel: 800-888-0245 or 408-228-6300
Fax: 408-228-6400
E-mail: sales@promise.com

Promise Taiwan

2F, No. 30, Industry E.Rd. IX
Science-Based Industrial Park
Hsin-Chu, Taiwan, R.O.C
Tel: 886 3 578 2395
Fax: 886 3 564 5313
E-mail: sales@promise.com.tw

Promise EMEA

European Business Centre
Luchthavenweg 81-125, 5657 EA
Eindhoven, The Netherlands
Tel: 31-40-235-2600
Fax: 31-40-256-9463
E-mail: sales@promise.nl

Promise China

Room 3115, No. 11
South Zhong Guan Cun Street
Hai Dian District, Beijing 100081, P.R. China
Tel: 86 10 68723941~2
Fax: 86 10 68723940
E-mail: sales-china@promise.com