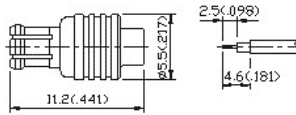


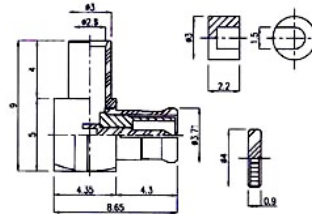
## MCX Coaxial Connectors

### 1. MCX Straight Plug (Semi-Rigid Cable, Direct Solder Attachment)



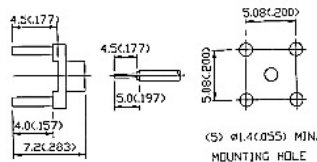
| Ordering Code    | Applicable Cable RG/U | Finish                                             | Insulation |
|------------------|-----------------------|----------------------------------------------------|------------|
| MCX-50PAG0113BRX | RG 405/U              | Gold plated center contact & body                  | Teflon     |
| MCX-50PAN0113BRX | RG 405/U              | Center contact: Gold plated<br>Body: Nickel plated | Teflon     |
| MCX-50PAG0112BRX | RG 402/U              | Gold plated center contact & body                  | Teflon     |
| MCX-50PAN0112BRX | RG 402/U              | Center contact: Gold plated<br>Body: Nickel plated | Teflon     |

### 2. MCX Right Angle Plug (Semi-Rigid Cable, Direct Solder Attachment)



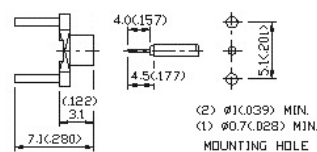
| Ordering Code    | Applicable Cable RG/U | Finish                                             | Insulation |
|------------------|-----------------------|----------------------------------------------------|------------|
| MCX-50PAG0613BRX | RG 405/U              | Gold plated center contact & body                  | Teflon     |
| MCX-50PAN0613BRX | RG 405/U              | Center contact: Gold plated<br>Body: Nickel plated | Teflon     |
| MCX-50PAG0612BRX | RG 402/U              | Gold plated center contact & body                  | Teflon     |
| MCX-50PAN0612BRX | RG 402/U              | Center contact: Gold plated<br>Body: Nickel plated | Teflon     |

### 3. MCX PCB Cable Terminal (Semi-Rigid Cable, Direct Solder Attachment)



| Ordering Code    | Applicable Cable RG/U | Finish             |
|------------------|-----------------------|--------------------|
| MCX-50XXG1213BRX | RG 405/U              | Gold plated body   |
| MCX-50XXN1213BRX | RG 405/U              | Nickel plated body |
| MCX-50XXG1212BRX | RG 402/U              | Gold plated body   |
| MCX-50XXN1212BRX | RG 402/U              | Nickel plated body |

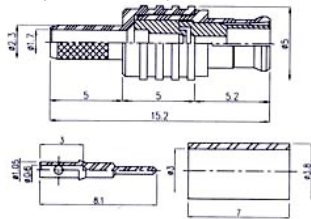
### 4. MCX PCB Cable Terminal (Semi-Rigid Cable, Direct Solder Attachment)



| Ordering Code    | Applicable Cable RG/U | Finish             |
|------------------|-----------------------|--------------------|
| MCX-50XXG1313BRX | RG 405/U              | Gold plated body   |
| MCX-50XXN1313BRX | RG 405/U              | Nickel plated body |
| MCX-50XXG1312BRX | RG 402/U              | Gold plated body   |

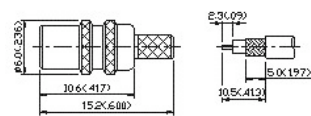
|                  |          |                    |
|------------------|----------|--------------------|
| MCX-50XXN1312BRX | RG 402/U | Nickel plated body |
|------------------|----------|--------------------|

### 5. MCX Straight Plug Crimp (Flexible Cable-Crimp Attachment)



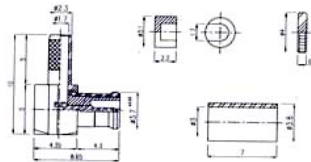
| Ordering Code    | Applicable Cable RG/U | Finish                                             | Insulation |
|------------------|-----------------------|----------------------------------------------------|------------|
| MCX-50PAG0202BRX | 174,188A,316          | Gold plated center contact & body                  | Teflon     |
| MCX-50PAN0202BRX | 174,188A,316          | Center contact: Gold plated<br>Body: Nickel plated | Teflon     |
| MCX-50PAG0201BRX | 178,196               | Gold plated center contact & body                  | Teflon     |
| MCX-50PAN0201BRX | 178,196               | Center contact: Gold plated<br>Body: Nickel plated | Teflon     |

### 6. MCX Straight Jack Crimp (Flexible Cable-Crimp Attachment)



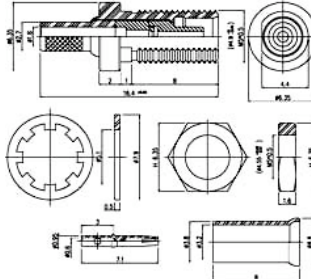
| Ordering Code    | Applicable Cable RG/U | Finish                                             | Insulation |
|------------------|-----------------------|----------------------------------------------------|------------|
| MCX-50SAG0202BRX | 174,188A,316          | Gold plated center contact & body                  | Teflon     |
| MCX-50SAN0202BRX | 174,188A,316          | Center contact: Gold plated<br>Body: Nickel plated | Teflon     |
| MCX-50SAG0201BRX | 178,196               | Gold plated center contact & body                  | Teflon     |
| MCX-50SAN0201BRX | 178,196               | Center contact: Gold plated<br>Body: Nickel plated | Teflon     |

### 7. MCX Right Angle Plug Crimp (Flexible Cable-Crimp Attachment)



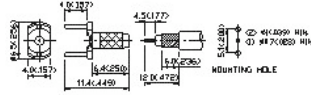
| Ordering Code    | Applicable Cable RG/U | Finish                                             | Insulation |
|------------------|-----------------------|----------------------------------------------------|------------|
| MCX-50PAG0402BRX | 174,188A,316          | Gold plated center contact & body                  | Teflon     |
| MCX-50PAN0402BRX | 174,188A,316          | Center contact: Gold plated<br>Body: Nickel plated | Teflon     |
| MCX-50PAG0401BRX | 178,196               | Gold plated center contact & body                  | Teflon     |
| MCX-50PAN0401BRX | 178,196               | Center contact: Gold plated<br>Body: Nickel plated | Teflon     |

### 8. MCX Straight Bulkhead Jack Crimp (Flexible Cable-Crimp Attachment)



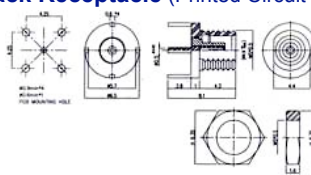
| Ordering Code    | Applicable Cable RG/U | Finish                                             | Insulation |
|------------------|-----------------------|----------------------------------------------------|------------|
| MCX-50SAG6402BRX | 174,188A,316          | Gold plated center contact & body                  | Teflon     |
| MCX-50SAN6402BRX | 174,188A,316          | Center contact: Gold plated<br>Body: Nickel plated | Teflon     |
| MCX-50SAG6401BRX | 178,196               | Gold plated center contact & body                  | Teflon     |
| MCX-50SAN6401BRX | 178,196               | Center contact: Gold plated<br>Body: Nickel plated | Teflon     |

### 9. MCX PCB Cable Terminal-Crimp Type (Printed Circuit Board Receptacle)



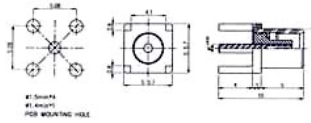
| Ordering Code    | Finish      |
|------------------|-------------|
| MCX-50XXG1302BRX | Gold plated |

### 10. MCX Straight PCB Mount Bulkhead Jack Receptacle (Printed Circuit Board Receptacle)



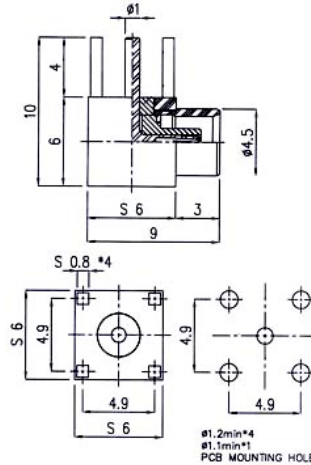
| Ordering Code    | Finish                                             | Insulation |
|------------------|----------------------------------------------------|------------|
| MCX-50SAG7050BRX | Gold plated center contact & body                  | Teflon     |
| MCX-50SAN7050BRX | Center contact: Gold plated<br>Body: Nickel plated | Teflon     |

### 11. MCX Straight PCB Mount Jack Receptacle (Printed Circuit Board Receptacle)



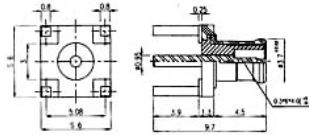
| Ordering Code    | Finish                                             | Insulation |
|------------------|----------------------------------------------------|------------|
| MCX-50SAG5151BRX | Gold plated center contact & body                  | Teflon     |
| MCX-50SAN5151BRX | Center contact: Gold plated<br>Body: Nickel plated | Teflon     |

### 12. MCX Right Angle PCB Mount Jack Receptacle (Printed Circuit Board Receptacle)



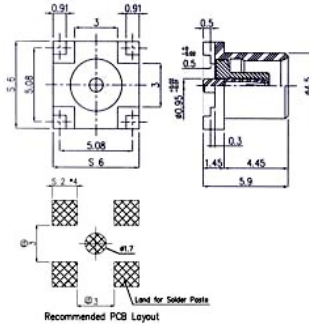
| Ordering Code    | Finish                                             | Insulation |
|------------------|----------------------------------------------------|------------|
| MCX-50SAG7551BRX | Gold plated center contact & body                  | Teflon     |
| MCX-50SAN7551BRX | Center contact: Gold plated<br>Body: Nickel plated | Teflon     |

### 13. MCX Straight PCB Mount Plug Receptacle (Printed Circuit Board Receptacle)



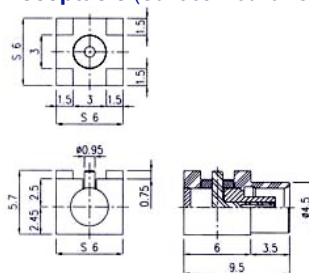
| Ordering Code    | Finish                                             | Insulation |
|------------------|----------------------------------------------------|------------|
| MCX-50PAG7152BRX | Gold plated center contact & body                  | Teflon     |
| MCX-50PAN7152BRX | Center contact: Gold plated<br>Body: Nickel plated | Teflon     |

#### 14. MCX Straight Surface Mount Jack Receptacle (Surface Mount Receptacle)



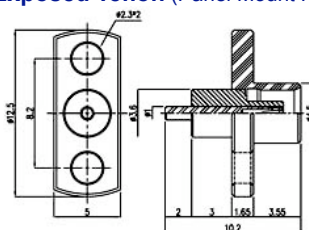
| Ordering Code    | Finish                                             | Insulation |
|------------------|----------------------------------------------------|------------|
| MCX-50SAG7653BRX | Gold plated center contact & body                  | Teflon     |
| MCX-50SAN7653BRX | Center contact: Gold plated<br>Body: Nickel plated | Teflon     |

#### 15. MCX Right Angle Surface Mount Jack Receptacle (Surface Mount Receptacle)



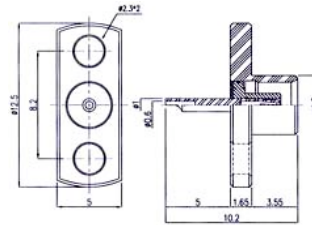
| Ordering Code    | Finish                                             | Insulation |
|------------------|----------------------------------------------------|------------|
| MCX-50SAG7654BRX | Gold plated center contact & body                  | Teflon     |
| MCX-50SAN7654BRX | Center contact: Gold plated<br>Body: Nickel plated | Teflon     |

#### 16. MCX 2 Hole Flange Jack Receptacle, Exposed Teflon (Panel Mount Receptacle)



| Ordering Code    | Finish                                             | Insulation |
|------------------|----------------------------------------------------|------------|
| MCX-50SAG5055BRX | Gold plated center contact & body                  | Teflon     |
| MCX-50SAN5055BRX | Center contact: Gold plated<br>Body: Nickel plated | Teflon     |

#### 17. MCX 2 Hole Flange Jack Receptacle, Solder Pot Contact (Panel Mount Receptacle)



| Ordering Code    | Finish                                             | Insulation |
|------------------|----------------------------------------------------|------------|
| MCX-50SAG5956BRX | Gold plated center contact & body                  | Teflon     |
| MCX-50SAN5956BRX | Center contact: Gold plated<br>Body: Nickel plated | Teflon     |

For other plating options contact factory