

# MAX25614A Active in Production.

Buy Now

## Automotive IR LED/VCSEL Driver for Driver Monitoring Systems

ASIL-B, Automotive Infrared LED/VCSEL Driver Simplifies Design for Automotive Driver and Occupant Monitoring Systems

NDA Required. Request Full Data Sheet and Software [Subscribe](#)

Product Details | Technical Documentation | Design & Development | Order & Quality | Support & Training

### Product Details

Parameters Package | Pin | Size Features Description/Applications

#### Parametric specs for LED Drivers

#### Simplified Block Diagram

V <sub>IN</sub> (V) (min)	4.5
V <sub>IN</sub> (V) (max)	36
Max. No. of LEDs	8
# LED Channels	1
Regulation Topology	Inductor Based
LED Configuration	Series
Current per Channel (A) (max)	10

[View Less](#)

### Technical Docs

Document Type:  Document Title:

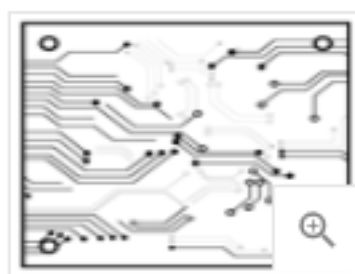
★ Data Sheet [Automotive IR LED/VCSEL Driver for Driver Monitoring Systems](#) Mar 02, 2022

### Design & Development

Click any title below to view the detail page where available.

All [Hardware Development](#)

#### Hardware Development



EVALUATION BOARD

### MAX25614EVKIT

\$261.18

[Data Sheet](#)

Buy Now

### Order & Quality

Part Number <span>↑↓</span>	Price/Unit* <span>↑↓</span>	Package <span>↑↓</span>	Temperature	Carrier Type <span>↑↓</span>	Fabprocess	Technology	Sample Size	Rejection
<input type="text" value="Select"/>		<input type="text" value="Select"/>	<input type="text" value="Select"/>					
<a href="#">MAX25614AATI/VY+</a> Active	\$3.87	TQFN-CU; 28Pin; 5.1mm(L) x 5.1mm(W) x 0.8mm(H)	-40°C to +125°C	Tray	<a href="#">Contact reliability engineer for information</a>			
<a href="#">MAX25614AATI/VY+T</a> Active	\$3.87	TQFN-CU; 28Pin; 5.1mm(L) x 5.1mm(W) x 0.8mm(H)	-40°C to +125°C	Reel	<a href="#">Contact reliability engineer for information</a>			

### Support & Training

Search our knowledge base for answers to your technical questions.

[Filtered Search](#)

Our dedicated team of Applications Engineers are also available to answer your technical questions. Visit our [support portal](#).

#### MAX25614A Related Videos



Introduction to the MAX25614A, MAX25614B, MAX25614C, and MAX25614D Automotive IR LED/VCSEL Driver for Driver Monitoring Systems

2:41 March 25, 2022

This video provides an introduction to Analog Devices' Automotive IR LED/VCSEL Driver for Driver Monitoring Systems - the MAX25614A, MAX25614B, MAX25614C, and MAX25614D.

[View All Videos](#)

### Cookie Consent

By clicking "Accept All Cookies", you agree to the storing of cookies on your device to enhance site navigation, analyze site usage, and assist in our marketing efforts. Visitors have the right to withdraw their consent. [Cookie Policy](#)

[Cookies Settings](#)

Accept All Cookies

