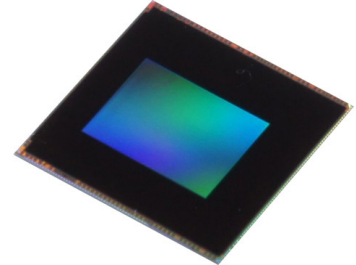


CMOS image sensor

5Megapixel 1.4µm

T8EV5**1/4 inch 5Mpixels CMOS Image Sensor with ISP**

The T8EV5 is a color sensor chip which includes area color image sensor embedded with image signal processor (ISP). In the sensor area 2560 horizontal and 1944 vertical signal pixels, and the image size meets with 1/4 inch optical Format. Use of the CMOS process enables low power consumption operations. It also provides excellent color reproduction through its primary color filter, and embedded image signal processor enables small and simple camera system. So it is fit to use as an image input device for phone cameras.

■ Features**Applications**

- ▶ Mobile phones and Smart phones

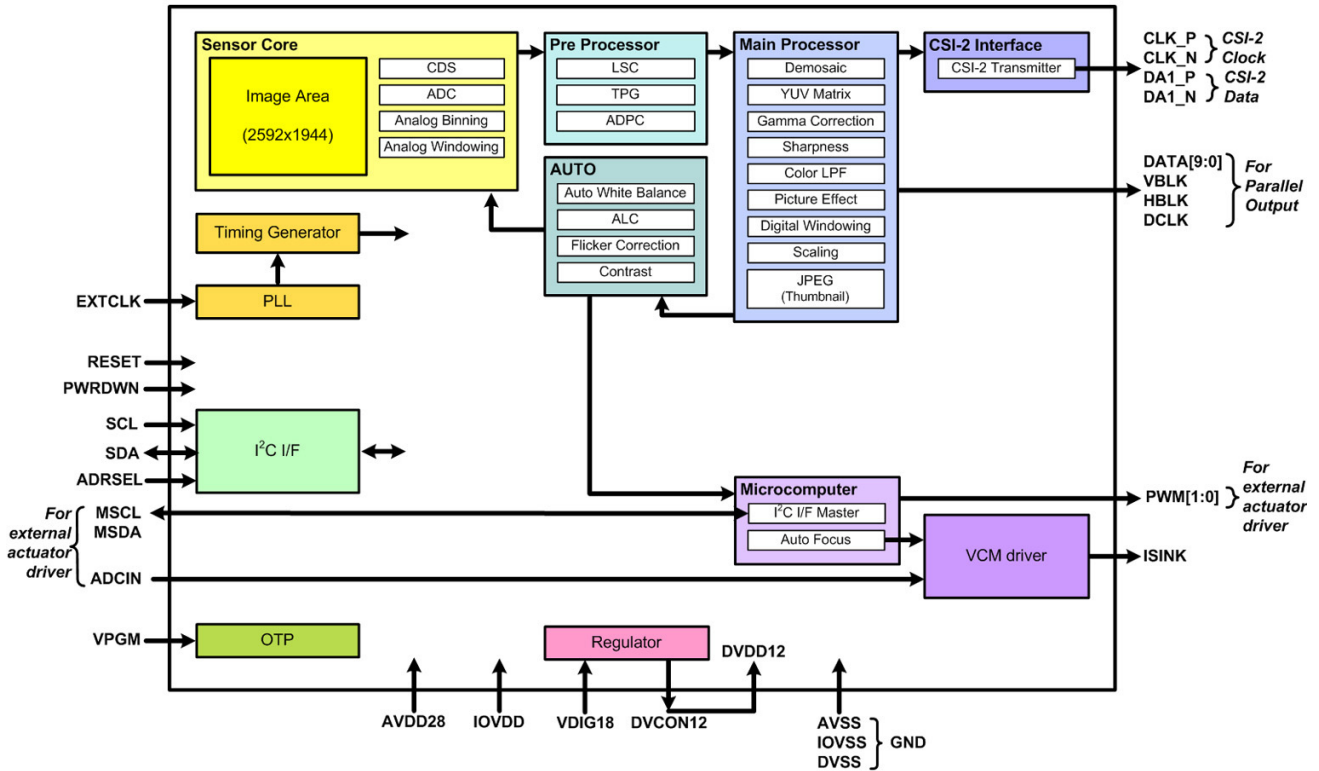
Features

- ▶ 1/4" 5M pixel (1.4µm)
- ▶ CMOS image sensor
- ▶ Non-diced wafer
- ▶ Progressive scan
- ▶ 8bits parallel output
- ▶ CSI-2 1lane
- ▶ I²C interface
- ▶ Binning:
 - Horizontal 1/2
 - Vertical 1/2, 1/4, 1/8
- ▶ Automatic functions
 - Auto luminance control (ALC),
 - Auto white balance (AWB),
 - Auto defect pixel correction (ADPC),
 - Auto Focus
- ▶ Flicker correction
- ▶ Lens shading correction
- ▶ Gamma correction
- ▶ Standby mode, Power down mode
- ▶ Built-in regulator (1.8V to 1.2V)
- ▶ OTP (One Time Programmable) memory: 8kbits

Specifications

- ▶ Optical format: 1/4"
- ▶ Pixel size: 1.4µm × 1.4µm
- ▶ Output pixels: 2592(H) × 1944(V)
- ▶ Image area size: 3774.4µm(H) × 2839.2µm(V)
- ▶ Data formats: YUV422, RGB565, Jpeg+thumbnail
- ▶ Frame rate:
 - 7.5fps(YUV), 20fps(Jpeg) @full resolution
 - 13fps(YUV), 30fps(Jpeg) @1080p
 - 30fps(YUV), 60fps(Jpeg) @720p
 - 100fps@VGA Output
- ▶ Power supply:
 - Analog=2.6 to 3.0V
 - Digital=1.7 to 1.9V
 - I/O=1.7 to 3.0V
- ▶ Power consumption: 300mW @full Jpeg 20fps
- ▶ Sensitivity: 590mV/lx·s
- ▶ SNR: 35dB
- ▶ Dynamic range: 62dB
- ▶ Operating temperature: -20 to +60°C
- ▶ Storage temperature: -30 to +85°C

System Block Diagram



» For further information about Toshiba Sensors, please visit

<http://www.semicon.toshiba.co.jp/eng/product/sensor/index.html>

- Toshiba Corporation, and its subsidiaries and affiliates (collectively "TOSHIBA"), reserve the right to make changes to the information in this document, and related hardware, software and systems (collectively "Product") without notice.
- This document and any information herein may not be reproduced without prior written permission from TOSHIBA. Even with TOSHIBA's written permission, reproduction is permissible only if reproduction is without alteration/omission.
- Though TOSHIBA works continually to improve Product's quality and reliability, Product can malfunction or fail. Customers are responsible for complying with safety standards and for providing adequate designs and safeguards for their hardware, software and systems which minimize risk and avoid situations in which a malfunction or failure of Product could cause loss of human life, bodily injury or damage to property, including data loss or corruption. Before customers use the Product, create designs including the Product, or incorporate the Product into their own applications, customers must also refer to and comply with (a) the latest versions of all relevant TOSHIBA information, including without limitation, this document, the specifications, the data sheets and application notes for Product and the precautions and conditions set forth in the "TOSHIBA Semiconductor Reliability Handbook" and (b) the instructions for the application with which the Product will be used with or for. Customers are solely responsible for all aspects of their own product design or applications, including but not limited to (a) determining the appropriateness of the use of this Product in such design or applications; (b) evaluating and determining the applicability of any information contained in this document, or in charts, diagrams, programs, algorithms, sample application circuits, or any other referenced documents; and (c) validating all operating parameters for such designs and applications. **TOSHIBA ASSUMES NO LIABILITY FOR CUSTOMERS' PRODUCT DESIGN OR APPLICATIONS.**
- **PRODUCT IS NEITHER INTENDED NOR WARRANTED FOR USE IN EQUIPMENTS OR SYSTEMS THAT REQUIRE EXTRAORDINARILY HIGH LEVELS OF QUALITY AND/OR RELIABILITY, AND/OR A MALFUNCTION OR FAILURE OF WHICH MAY CAUSE LOSS OF HUMAN LIFE, BODILY INJURY, SERIOUS PROPERTY DAMAGE AND/OR SERIOUS PUBLIC IMPACT ("UNINTENDED USE").** Except for specific applications as expressly stated in this document, Unintended Use includes, without limitation, equipment used in the aerospace industry, medical equipment, equipment used for automobiles, trains, ships and other transportation, traffic signaling equipment, equipment used to control combustions or explosions, safety devices, elevators and escalators, devices related to electric power, and equipment used in finance-related fields. **IF YOU USE PRODUCT FOR UNINTENDED USE, TOSHIBA ASSUMES NO LIABILITY FOR PRODUCT.** For details, please contact your TOSHIBA sales representative.
- Do not disassemble, analyze, reverse-engineer, alter, modify, translate or copy Product, whether in whole or in part.
- Product shall not be used for or incorporated into any products or systems whose manufacture, use, or sale is prohibited under any applicable laws or regulations.
- The information contained herein is presented only as guidance for Product use. No responsibility is assumed by TOSHIBA for any infringement of patents or any other intellectual property rights of third parties that may result from the use of Product. No license to any intellectual property right is granted by this document, whether express or implied, by estoppel or otherwise.
- **ABSENT A WRITTEN SIGNED AGREEMENT, EXCEPT AS PROVIDED IN THE RELEVANT TERMS AND CONDITIONS OF SALE FOR PRODUCT, AND TO THE MAXIMUM EXTENT ALLOWABLE BY LAW, TOSHIBA (1) ASSUMES NO LIABILITY WHATSOEVER, INCLUDING WITHOUT LIMITATION, INDIRECT, CONSEQUENTIAL, SPECIAL, OR INCIDENTAL DAMAGES OR LOSS, INCLUDING WARRANTIES AND CONDITIONS RELATED TO SALE, USE OF PRODUCT, OR INFORMATION, INCLUDING WARRANTIES OR CONDITIONS OF MERCHANTABILITY, FITNESS FOR A PARTICULAR PURPOSE, ACCURACY OF INFORMATION, OR NON-INFRINGEMENT.**
- Do not use or otherwise make available Product or related software or technology for any military purposes, including without limitation, for the design, development, use, stockpiling or manufacturing of nuclear, chemical, or biological weapons or missile technology products (mass destruction weapons). Product and related software and technology may be controlled under the applicable export laws and regulations including, without limitation, the Japanese Foreign Exchange and Foreign Trade Law and the U.S. Export Administration Regulations. Export and re-export of Product or related software or technology are strictly prohibited except in compliance with all applicable export laws and regulations.
- Product is subject to foreign exchange and foreign trade control laws.
- The technical information described in this document is subject to foreign exchange and foreign trade control laws.
- Please contact your TOSHIBA sales representative for details as to environmental matters such as the RoHS compatibility of Product. Please use Product in compliance with all applicable laws and regulations that regulate the inclusion or use of controlled substances, including without limitation, the EU RoHS Directive. **TOSHIBA ASSUMES NO LIABILITY FOR DAMAGES OR LOSSES OCCURRING AS A RESULT OF NONCOMPLIANCE WITH APPLICABLE LAWS AND REGULATIONS.**

TOSHIBA

TOSHIBA CORPORATION

Semiconductor & Storage Products Company

<http://www.semicon.toshiba.co.jp/eng/>

Copyright © 1995-2012 TOSHIBA CORPORATION, All Rights Reserved.