

# Customer Information Sheet

DRAWING No.: M20-966XXXX SHEET 2 OF 2 IF IN DOUBT - ASK (C) NOT TO SCALE THIRD ANGLE PROJECTION ALL DIMENSIONS IN mm

## ORDER CODE:

**M20-966XXXX**

No. OF WAYS

FINISH:

06 = TIN

22 = SELECTIVE GOLD/TIN

27 = 0.8μ SELECTIVE GOLD/TIN

## SPECIFICATION

### MATERIALS:

MOULDING - GLASS FILLED POLYESTER UL94V-0, BLACK

CONTACTS - PHOSPHOR BRONZE

### FINISH:

06 - 30μ 90/10 TIN/LEAD

22 - 0.13μ GOLD ON CONTACT FACE, 30μ 90/10 TIN/LEAD ON TAILS

27 - 0.75μ GOLD ON CONTACT FACE, 30μ 90/10 TIN/LEAD TAILS

### ELECTRICAL:

CURRENT RATING AT 25°C - 20A MAX.

VOLTAGE PROOF - 750V AC

CONTACT RESISTANCE (INITIAL) - 20 MILLIOHMS MAX. (TIN), 15 MILLIOHMS MAX. (GOLD)

CONTACT RESISTANCE (AFTER CONDITIONING) - 30 MILLIOHMS MAX. (TIN), 25 MILLIOHMS MAX. (GOLD)

INSULATION RESISTANCE (INITIAL) - 1000000 MEGOHMS

INSULATION RESISTANCE (AFTER CONDITIONING) - 10000 MEGOHMS

### MECHANICAL:

DURABILITY - 300 OPERATIONS (GOLD), 50 OPERATIONS (TIN)

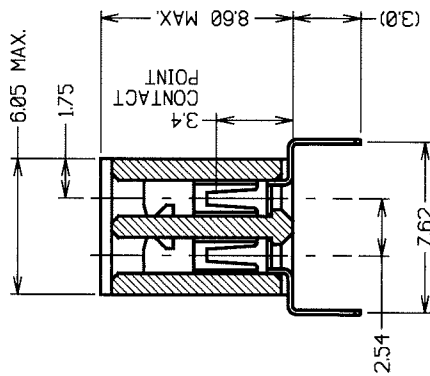
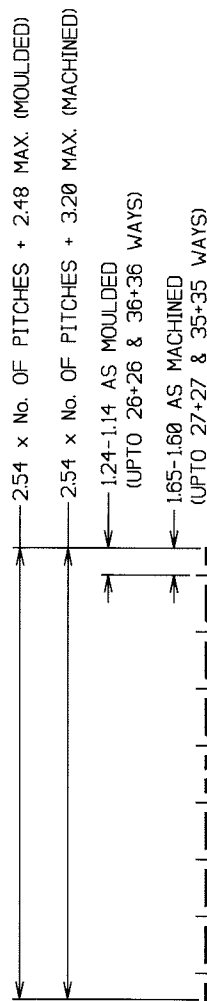
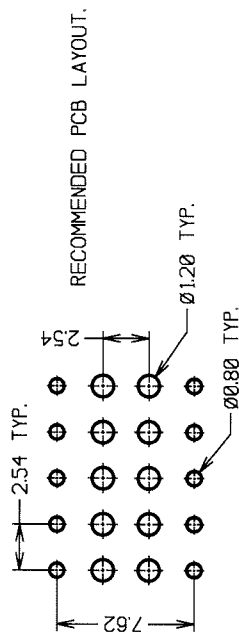
INSERTION FORCE - 3.0N MAX. 1.0N MIN.

WITHDRAWAL FORCE - 1.5N MAX. 0.5N MIN.

### ENVIRONMENTAL:

TEMPERATURE RANGE - -40°C TO +105°C

FOR COMPLETE SPECIFICATION SEE COMPONENT SPECIFICATION C001XX (LATEST ISSUE).



JAE	3	280105	8357
NAME	ISS.	DATE	C/NOTE
APPROVED:			
CHECKED:			
DRAWN:			
CUSTOMER REF:			
ASSEMBLY DRG:			

# HARWIN

**HARWIN USA**  
TEL: 603 893 5376  
FAX: 603 893 5396  
mis@harwin.com

**HARWIN Europe (UK)**  
TEL: 023 9231 4545  
FAX: 023 9231 4590  
mis@harwin.co.uk

**HARWIN Asia**  
TEL: +65 6 779 4909  
FAX: +65 6 779 3868  
mis@harwin.com.sg

## TOLERANCES

X - ±1mm  
XX - ±0.25mm  
XXX - ±0.10mm  
XXXX - ±0.01mm  
ANGLES - ±5°  
UNLESS STATED

THIS DRAWING AND ANY INFORMATION OR DESCRIPTIVE MATTER SET OUT HEREON ARE THE PROPERTY OF THE HARWIN GROUP AND MUST NOT BE DISCLOSED, LOANED, COPIED OR USED FOR MANUFACTURING, TENDERING OR FOR ANY OTHER PURPOSE WITHOUT THEIR WRITTEN PERMISSION.

MATERIAL:  
SEE ABOVE

FINISH:  
SEE ABOVE

S/AREA:  
mm²

TITLE: 2.54mm PITCH PC SOCKET  
ASSEMBLY DIL VERTICAL  
BOTTOM ENTRY (7.62mm)

DRAWING NUMBER:

**M20-966XXXX**

SHT  
2  
OF 2