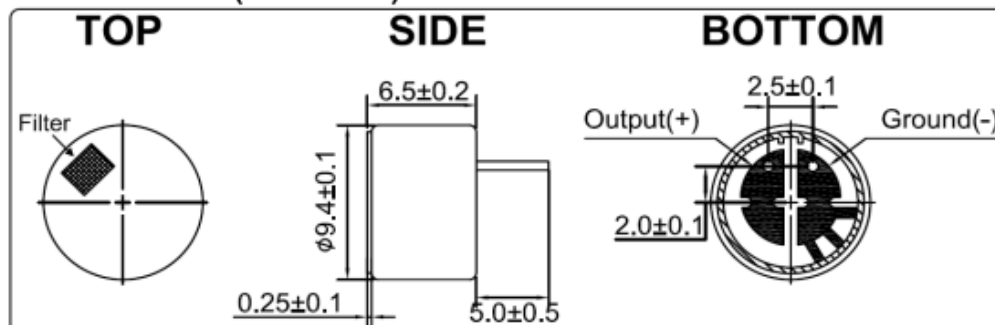


1. SPECIFICATIONS

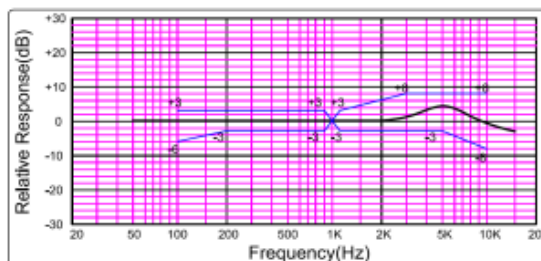
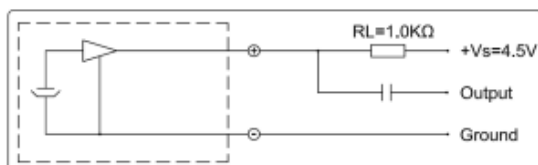
PARAMETERS	VALUES	UNITS
DIRECTIVITY	Omni-Directional	-
SENSITIVITY (0 dB = 1 V/pa AT 1 KHz)	-50 ± 2	dB
IMPEDANCE	Low Impedance	-
FREQUENCY RANGE	50 - 16,000	Hz
MAX OPERATING VOLTAGE	10	V
STANDARD OPERATION VOLTAGE (Vs)	4.5	V
RESISTANCE LOADING (RL)	1.0K	Ohm
MAX CURRENT CONSUMPTION	0.5	mA
S/N RATIO	>60	dB
MAX INPUT S.P.L (THD < 3%)	110	dB
OPERATING TEMPERATURE	-20 to +60	°C
STORAGE TEMPERATURE	-40 to +70	°C

2. DIMENSIONS (unit in mm)



Tolerance: ± 0.5 mm except specified

3. DRIVING CIRCUIT



Revision Table

Index Nr.	Date Reason - Procedure Change description	Drawing Date	implementation	Comments
			LS-Nr.: Date	

Designed by	MZ	01.03.2016	Dimensions without tolerance ± 0.5 mm	Index: 00	Current date
Released by	CB	01.03.2016	Drawing number	160301.1MSO	
Changed by					