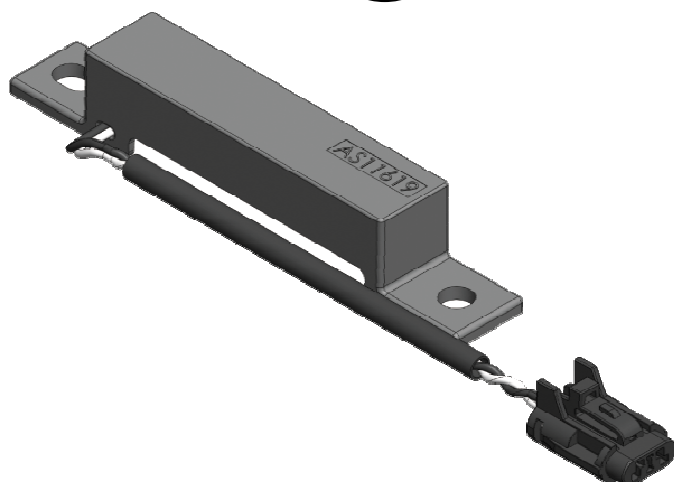


LF Transmitter Antenna AS11619



RoHS



Description

- LF transmitter antenna.
- Easy to install on the bracket.
- L × W × H: 116.0 × 18.0 × 19.0 mm Max.
- Product weight: 31.5 g (harness included).
- Waterproof level: IPX67 of ISO20653.
- Match for TI&NXP IC, pre-set resonant frequency to 125kHz, 134.2kHz or customization.
- Reference electric field: 103 μ V/m@3m (@ 134.2kHz, 1.4App)
- Resin potted, with/without connector.
- RoHS compliance.

Environmental Data

- Operating temperature range: -40°C~+85°C
- Storage temperature range: -40°C~+85°C

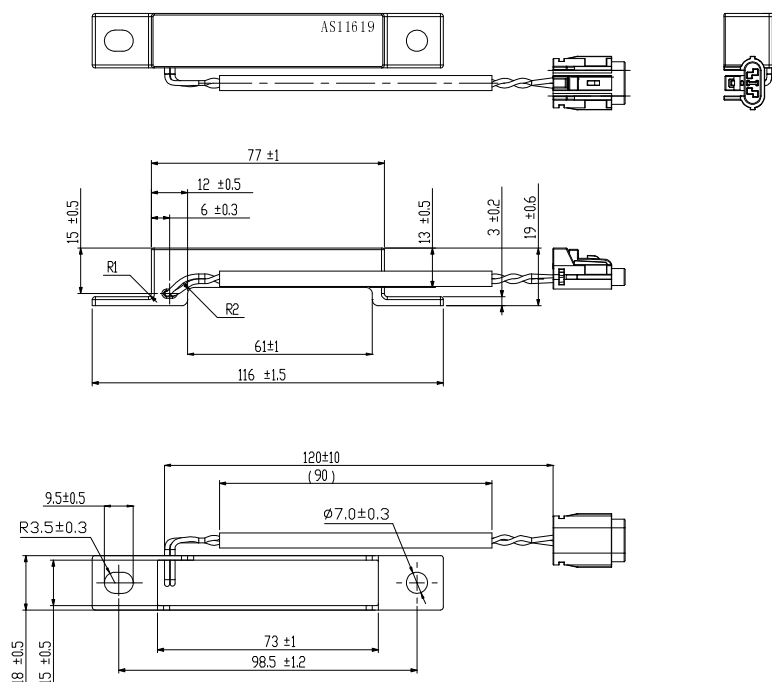
Packaging

- Plastic tray and carton box.
- Carton dimension: 500 × 300 × 195mm.
- 60pcs/box.

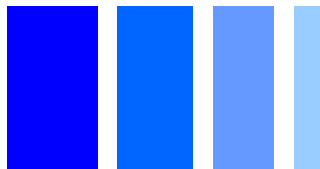
Applications

- PEPS, Smart key system.
- Security system

Dimension - [mm]



LF Transmitter Antenna AS11619



Electrical Characteristics

Part number	Tuning capacitance	Load Q	Resonant frequency	Resonant current	Load resistance
AS11619 -125A	332	60.1	$125.0 \pm 1.5\text{kHz}$	1.2App	4.7 Ω
AS11619-125B	472	52.1	$125.0 \pm 1.5\text{kHz}$	2.5App	2.2 Ω
AS11619-125C	682	41.7	$125.0 \pm 1.5\text{kHz}$	2.8App	2.2 Ω
AS11619-125D	822	30.5	$125.0 \pm 1.5\text{kHz}$	2.4App	3.3 Ω
AS11619-125E	103	26.3	$125.0 \pm 1.5\text{kHz}$	2.6App	3.3 Ω
AS11619 -134A	332	65.2	$134.2 \pm 1.5\text{kHz}$	1.2App	4.7 Ω
AS11619-134B	472	63.8	$134.2 \pm 1.5\text{kHz}$	2.5App	2.2 Ω
AS11619-134C	682	36.3	$134.2 \pm 1.5\text{kHz}$	2.9App	2.2 Ω
AS11619-134D	822	30.5	$134.2 \pm 1.5\text{kHz}$	2.5App	3.3 Ω
AS11619-134E	103	25.8	$134.2 \pm 1.5\text{kHz}$	2.6App	3.3 Ω
AS11619-20K	334	3.26	$20 \pm 1.5\text{kHz}$	2.2App	3.3 Ω

For more information, please browse our website <http://www.sumida.com>

Hong Kong

Tel.+852-2880-6688
FAX.+852-2565-9600

Tokyo

Tel.+81-3-5202-7112
FAX.+81-3-5202-7105

Chicago

Tel.+1-847-545-6700
FAX. +1-847-545-6720

Shanghai

Tel.+86-021-5836-3299
FAX.+86-021-5836-3266

Seoul

Tel.+82-2-6237-0777
FAX.+82-2-6237-0778

Obernzell

Tel.+49-8591-937-0
FAX. +49-8591-937-103

Shenzhen

Tel.+86-755-8291-0228
FAX.+86-755-8291-0338

Singapore

Tel.+65-6296-3388
FAX.+65-6296-3390

Neumarkt

Tel.+49-9181-4509-110
FAX. +49-9181-4509-310

Taipei

Tel.+886-2-8751-2737
FAX.+886-2-8751-2738

San Jose

Tel.+1-408-321-9660
FAX.+1-408-321-9308