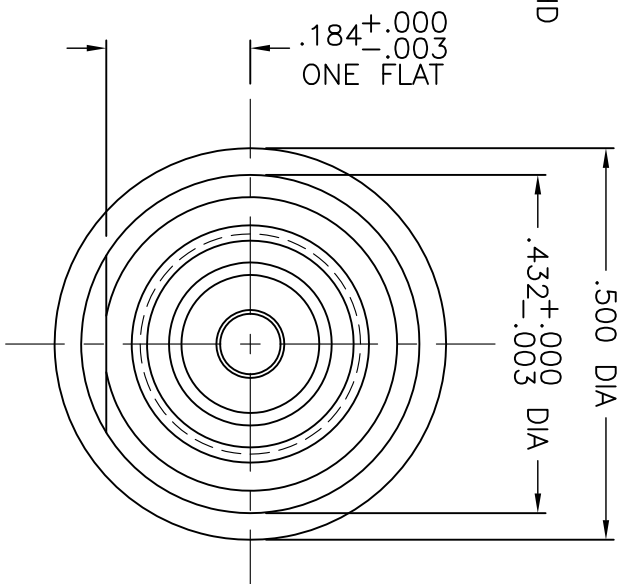
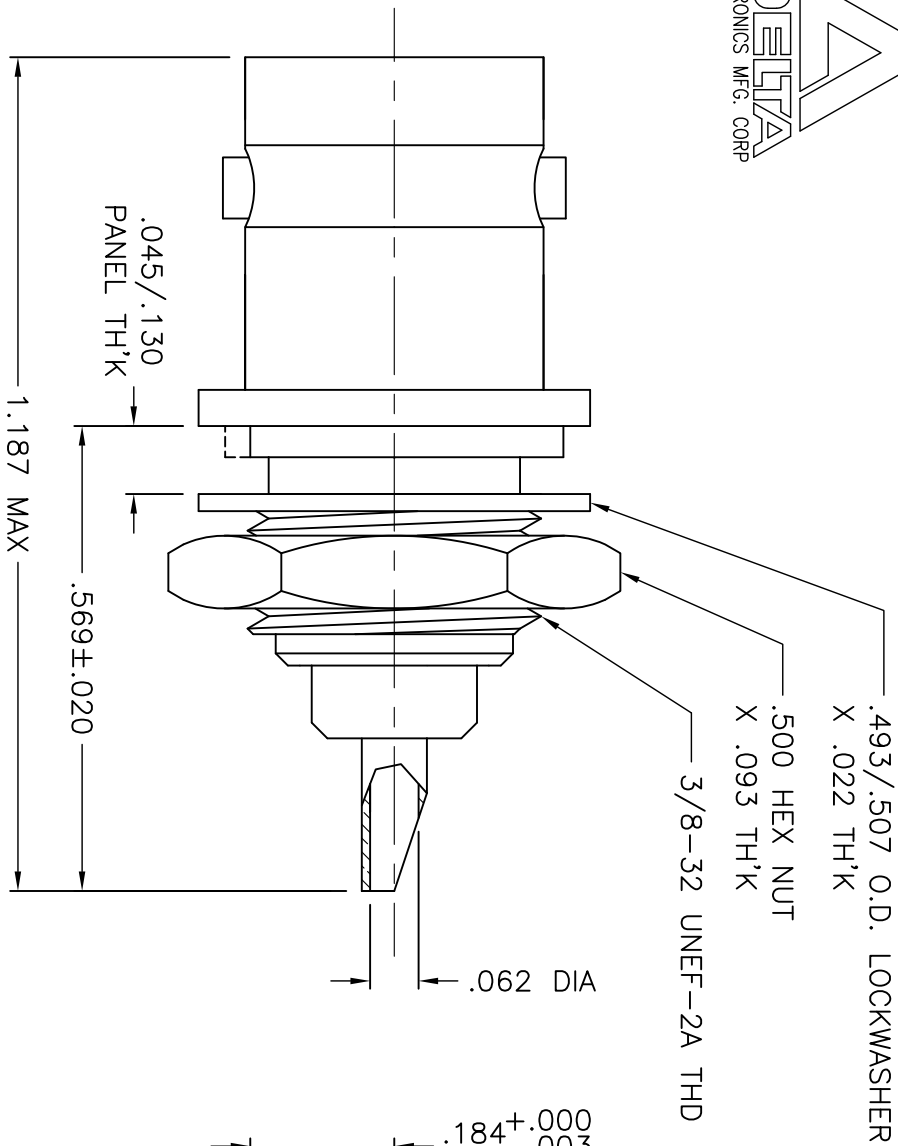


1020-000-A62E



VIEW SHOWN WITH HEX NUT
& LOCKWASHER REMOVED

NOTES:

1. ASSEMBLED CONNECTOR INTERFACE IS DESIGNED IN ACCORDANCE WITH MIL-STD-348.
2. MATERIAL: BODY & HEX NUT - BRASS PER ASTM B16
LOCKWASHER - PHOSPHOR BRONZE PER QQ-B-750
CONTACT - BERYLLIUM COPPER PER ASTM B196
INSULATOR - TEFLON PER ASTM D1710
3. FINISHES: CONTACT - GOLD PLATE PER ASTM B488
ALL OTHER METAL PARTS - SILVER PLATE PER ASTM B700

M39012/21-0001

DELTA ELECTRONICS MFG. CORP. Beverly, MA 01915

TITLE: 'BNC' BULKHEAD JACK RECEPTACLE
- SOLDER POT CONTACT

| - | OUTLINE | 1/3/05 |
|--------|-----------|--------|
| A.L.T. | REVISIONS | DATE |

UNLESS OTHERWISE SPECIFIED: TOLERANCES: 3 PLACES = $\pm .005$, 2 PLACES = $\pm .02$, ANGLES = $\pm 1/2^\circ$, SURFACE FINISH = 63

THESE DRAWINGS AND SPECIFICATIONS ARE THE PROPERTY OF DELTA ELECTRONICS MFG. CORP. AND SHALL NOT BE REPRODUCED, OR COPIED OR USED AS THE BASIS FOR THE MANUFACTURE OR SALE OF APPARATUS OR DEVICES WITHOUT THEIR EXPRESS WRITTEN CONSENT.

| | | | | |
|---------------------------|---------------|---------------|-----------------|--------------------------------|
| Drawn by BUM 1/3/05 | Scale 4/1 | Ckd. by MR | Engr Appd MR | FILE NAME: 1020000A62E-000T |
| CODE IDENT. - 00795 | 1020-000-A62E | | | |