



SCALABLE CONSOLE  
ACCESS SERVER



# DIGI CONNECT IT 4

## Out-of-band management of network and server equipment

The Digi Connect® IT 4 console access server ensures continuous network uptime to all your remote locations by functioning as an always-on cellular out-of-band gateway for branch offices, retail stores, kiosks and other sites, even when the primary network is down. You can maximize WAN resilience with failover to 4G LTE networks, while built-in multicarrier capabilities lets you instantly switch to the carrier of choice.

For enterprises that need serial access for remote equipment monitoring, Digi Connect IT 4 offers the most complete and secure cellular-based solution in the industry for less than the cost of an enterprise modem. Digi Connect IT 4 will identify and remediate issues at the network edge before they can become a work order or fail.

### FEATURES AND BENEFITS

- Advanced modem management software
- OOB management and recovery using secure SMS
- Add instant business continuity to any location with primary or backup LTE connectivity
- Protect your business and brand with a simple solution to avoid network disruptions and outages
- Detect and remediate issues automatically
- Operate independently from in-band network
- Send automated alerts via email or SMS to notify of any network issues
- Identify any inconsistencies or unusual activity

### RELATED PRODUCTS



Digi CORE  
1002-CM



Digi ConnecPort®  
TS



Digi 6310-DX

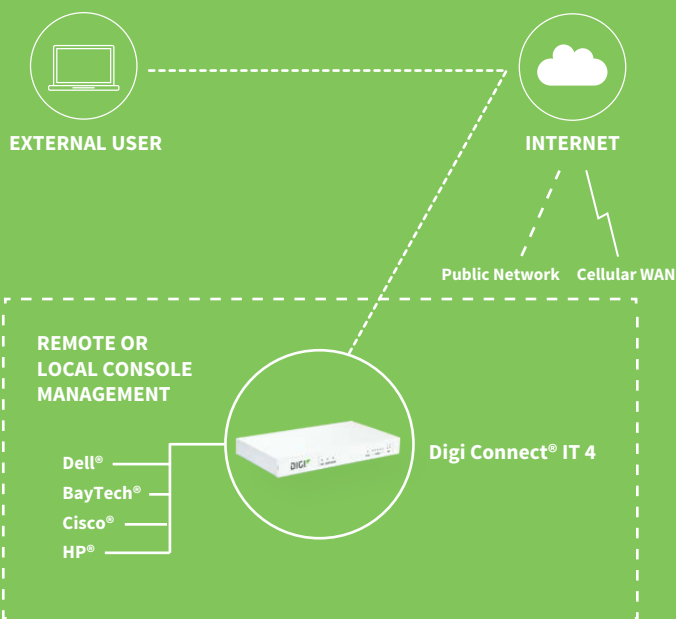


Digi  
AnywhereUSB®

Digi TrustFence®, a suite of hardware and firmware security features, ensures the integrity of Digi Connect IT 4 safeguards. Pair Digi Connect IT 4 with a dedicated wire line connection to ensure dual ISP connectivity, maximum uptime and complete business continuity for organizations that demand uninterrupted network access and availability.

Digi management solutions provide easy setup, configuration, security management and serial port monitoring of large installations of remote Digi devices. Digi Remote Manager® offers web-based device management for any Digi cellular routers, gateways or third-party devices.

### APPLICATION EXAMPLE



SPECIFICATIONS	DIGI CONNECT® IT 4
CELLULAR	CAT 6, CAT 4, CAT 1 EMEA, CAT M
MODULE SUPPORT	A suite of Digi CORE plug-in LTE modems
SOFTWARE AND MANAGEMENT	
REMOTE MANAGEMENT	Digi Remote Manager® (cloud based)
LOCAL MANAGEMENT	WebUI (HTTP/HTTPS); CLI (Console, SSH)
NETWORK	
ETHERNET	(2) RJ-45; 10/100 Mbps (auto-sensing)
CONNECTORS	
SERIAL	(4) Serial Ports RJ45 RS232
PHYSICAL	
DIMENSIONS (L X W X H)	9.0 in x 5.0 in x 1.0 in (228 mm x 127 mm x 25 mm)
WEIGHT	26 oz. (0.73 kg)
STATUS LEDS	Power, online, backup, LTE status, five (5) for signal strength and two (2) for SIM selection
POWER REQUIREMENTS	
POWER INPUT	18VDC, .66A; 100-240 AC
ENVIRONMENTAL	
OPERATING TEMPERATURE	0° C to 40° C (32° F to 104° F)
RELATIVE HUMIDITY	5% to 95% (non-condensing)
APPROVALS	
SAFETY, ENVIRONMENTAL, EMISSIONS/IMMUNITY	FCC Part 15, Subpart B, Class A; CE, RCM; CAN ICES03(B)/NMB-3(B)
WARRANTY	
PRODUCT WARRANTY	3 years

ENTERPRISE SOFTWARE	DESCRIPTION
PROTOCOL SUPPORT	HTTP, HTTPS, FTP, SFTP, SSL, SNMP, SNMP (v1/v2c/v3), SSH, Telnet and CLI for web management; Remote management via Digi Remote Manager; SMS management
SECURITY/VPN	IP filtering, stateful inspection firewall with scripting, address and port translation; VPN: IPSec with IKEv1, IKEv2, NAT Traversal; SSL, SSLv2, SSLv3, FIPS 197, ; PPTP, L2TP; no limit VPN tunnels; Cryptology: SHA-1, MD5, RSA; Encryption: DES, 3DES and AES up to 256-bit (CBC mode for IPsec); Authentication: RADIUS, TACACS+, MAC address filtering; VLAN support
ROUTING/FAILOVER	IP pass-through; NAT, NATP with IP port forwarding; Ethernet bridging; GRE; Multicast routing; Routing protocols: PPP, OSPF, BGP, RSTP (Rapid Spanning Tree Protocol); IP failover: VRRP, Automatic failover/failback to secondary connection
OTHER PROTOCOLS	QoS via TOS/DSCP/WRED; UDP/TCP to serial

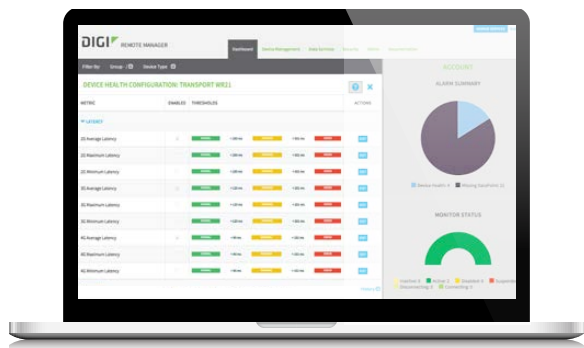
## PRODUCT IMAGES

FRONT



BACK





## CAPABILITIES

- Centralized management of remote devices over 3G/4G/LTE
- Define standard configurations and automatically monitor individual devices for PCI security compliance
- Report and alert on performance statistics, including connection history, signal quality, latency, data usage and packet loss
- No servers or applications to operate and maintain
- Complete tasks for your entire device network in minutes
- Edit configurations and update firmware for your individual devices or groups
- Monitor the status and location of your remote device via a web browser
- Active or deactivate cellular lines and monitor data to ensure you never incur overage charges

## INFRASTRUCTURE

- Hosted in a commercial-grade SAS 70-certified environment
- Superior availability, operating to 99.9% or greater
- Open APIs available to support application development

## SECURITY

- Certified SSAE-16 facilities
- Over 175 security controls in place to protect your data
- Enables compliance with security frameworks like PCI, HIPAA, NIST and more
- Earned SkyHigh's Cloud Trust Program highest ranking of Enterprise-Ready

PART NUMBERS	DESCRIPTION
ASB-5402-RM00-GLB	Connect IT 4, no cellular radio, all regions
ASB-5402-RM04-OUS	Connect IT 4, CAT 4, US only
ASB-5402-RME1-GLB	Connect IT 4, CAT 1, EMEA
ASB-5402-RM0M-OUS	Connect IT 4, CAT M, US only
ASB-5402-RM06-GLB	Connect IT 4, CAT 6, Global
ASB-5402-RM16-GLB	Connect IT 4, CAT 6, AU, NZ, JP, KR

FOR MORE INFORMATION  
PLEASE VISIT [WWW.DIGI.COM](http://WWW.DIGI.COM)

**DIGI SERVICE AND SUPPORT** / You can purchase with confidence knowing that Digi is always available to serve you with expert technical support and our industry leading warranty. For detailed information visit [www.digi.com/support](http://www.digi.com/support).

© 1996-2018 Digi International Inc. All rights reserved.  
All trademarks are the property of their respective owners.

91004387  
A4/119

**DIGI INTERNATIONAL WORLDWIDE HQ**  
877-912-3444 / 952-912-3444 / [www.digi.com](http://www.digi.com)

**DIGI INTERNATIONAL GERMANY**  
+49-89-540-428-0

**DIGI INTERNATIONAL JAPAN**  
+81-3-5428-0261 / [www.digi-intl.co.jp](http://www.digi-intl.co.jp)

**DIGI INTERNATIONAL SINGAPORE**  
+65-6213-5380

**DIGI INTERNATIONAL CHINA**  
+86-21-50492199 / [www.digi.com.cn](http://www.digi.com.cn)

