

RF Components

FSRS0881H1, Module Spec

■ Scope

- This specification applies to the low loss Rx filter for Cellular (AMPS/CDMA) systems.

■ Features

- Low loss Rx filter for mobile telephone CDMA / AMPS systems.
- Ceramic base material (HTCC) for Surface Mount Technology (SMD).
- Reliable Performance.

■ Absolute Maximum Ratings

Parameter	Symbol	Rating		Unit
		Min	Max	
Operating Temperature	Ta	-30	+85	°C
Storage Temperature	Ts	-40	+85	°C
Maximum Input Power	Pin max	-	20	dBm

FSRS0881H1, Module Spec

■ Electrical Characteristics

Operating Temperature : -30 to 85 °C

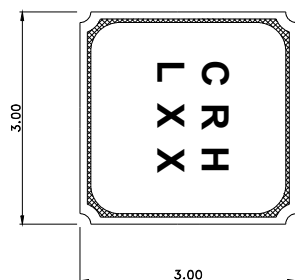
Parameters	Frequency(MHz)	Specification	Unit	Remarks
		LG (FSRS0881H1)		
Center Frequency		881.5	MHz	
Insertion Loss	869 to 894	3.5 max (2.7 typ)	dB	
Ripple	869 to 894	1.5 max (0.8 typ)	dB	
VSWR	869 to 894	2.5 max (1.7 typ)		
Attenuation	DC to 824	45 min (57 typ)	dB	
	824 to 849	40 min (50 typ)	dB	
	914 to 970	24 min (33 typ)	dB	
	970 to 1049	50 min (60 typ)	dB	
	1049 to 2000	34 min (50 typ)	dB	

Design and specifications are subject to change without notice.

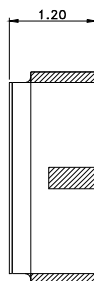
FSRS0881H1, Module Spec

■ Package type & Pin description

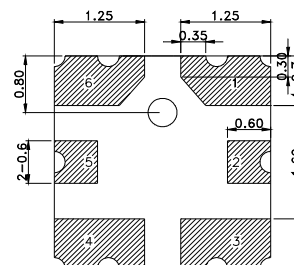
1) Top View



2) Side View



3) Bottom View

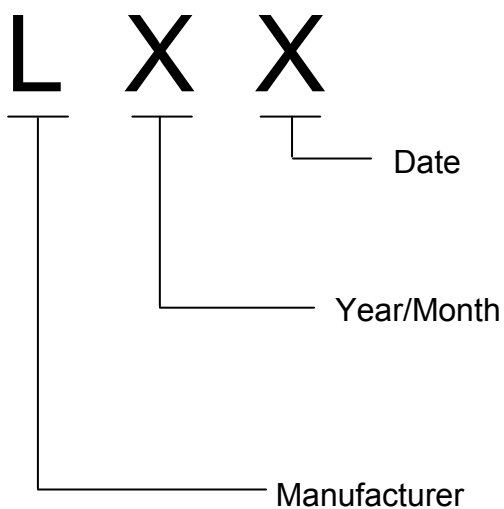
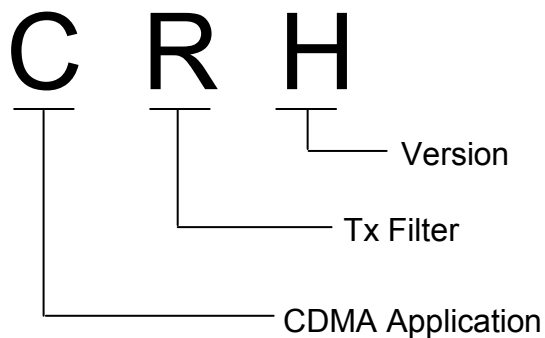


Unit : mm

Pin assignment
2 - IN, 5 - OUT
1, 3, 4, 6 - GND

FSRS0881H1, Module Spec

■ Marking Name and LOT No.



1	2	3	4	5	6	7	8	9	10	11
1	2	3	4	5	6	7	8	9	A	B
12	13	14	15	16	17	18	19	20	21	22
C	D	E	F	G	H	J	K	L	M	N
23	24	25	26	27	28	29	30	31		
P	Q	R	S	T	U	V	W	X		

Y \ M	1	2	3	4	5	6	7	8	9	10	11	12
2002	A	B	C	D	E	F	G	H	J	K	L	M
2003	N	P	Q	R	S	T	U	V	W	X	Y	Z
2004	a	b	c	d	e	f	g	h	j	k	l	m
2005	n	p	q	r	s	t	u	v	w	x	y	z

Year/Month code is case-sensitive and repeated by 4 years.

FSRS0881H1, Module Spec

Part Numbering

FSRS0881H1

① ② ③ ④ ⑤ ⑥ ⑦

- ① : Filter
- ② : SAW
- ③ : RF SAW
- ④ : SMD package
- ⑤ : Center frequency
- ⑥ : Package Size / attenuation
- ⑦ : Version

②	S	SAW
	B	BAW

③	R	RFSAW
	D	Duplexer
	M	IF SAW

⑤	Center freq	
	0085	85.38MHz
	0183	183.38MHz
	0210	210.38MHz
	0220	220.38MHz
	0836	836.5MHz
	0881	881.5MHz
	1575	1575.42MHz
	1765	1765MHz
	1855	1855MHz
	1880	1880MHz
1960	1960MHz	

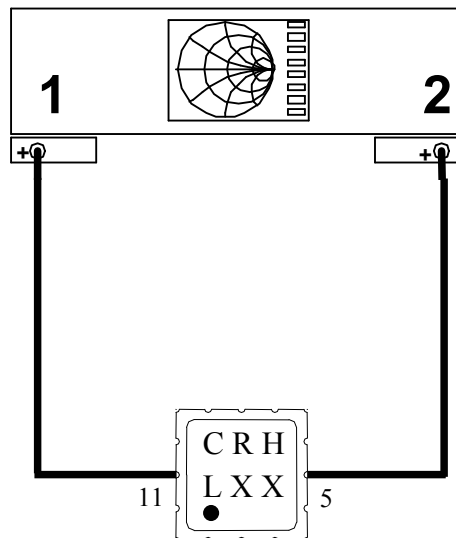
⑥	B	3x3mm ² low atten
	H	3x3mm ² high atten

Contact Points

	Domestic Sales	Overseas Sales	R&D
TEL	+82-2-2005-5384	+82-2-2005-5218	+82-31-380-4530
FAX	+82-2-2005-5252	+82-2-2005-5206~7	+82-31-38602688
email	gwseo@lginnotek.com	jwleeb@lginnotek.com	mhleeb@lginnotek.com

FSRS0881H1, Module Spec

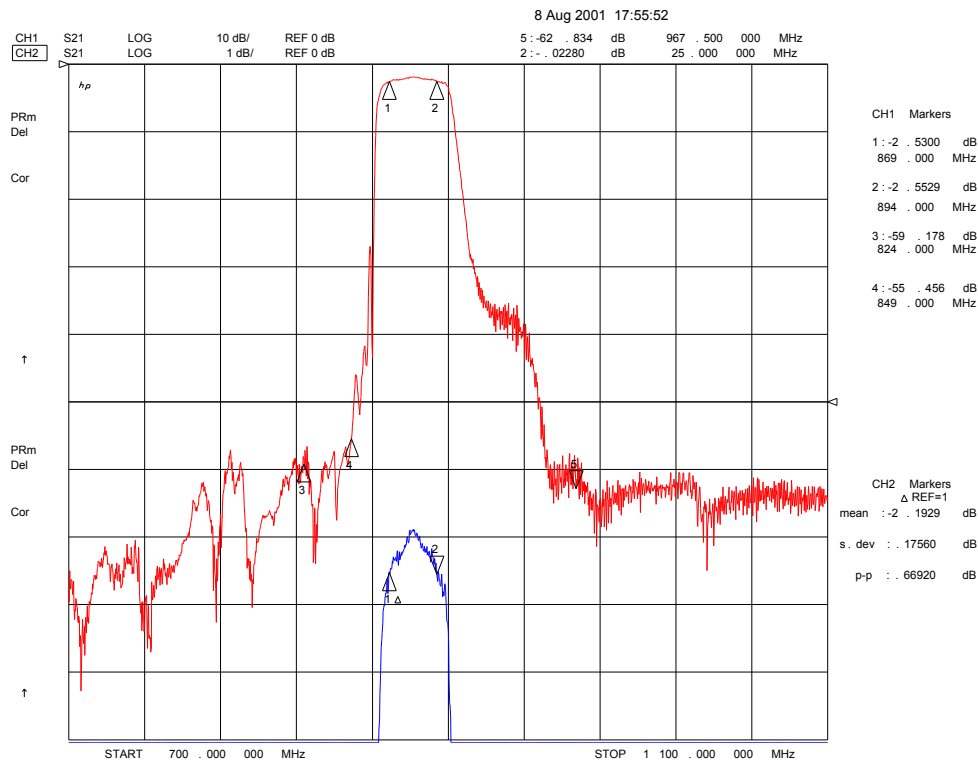
■ Measuring Circuit



FSRS0881H1, Module Spec

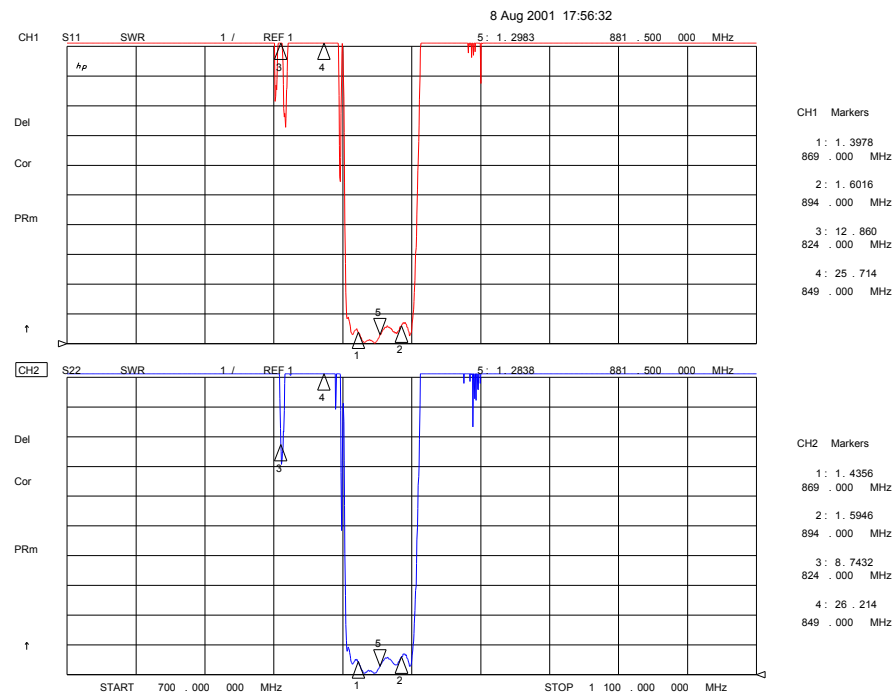
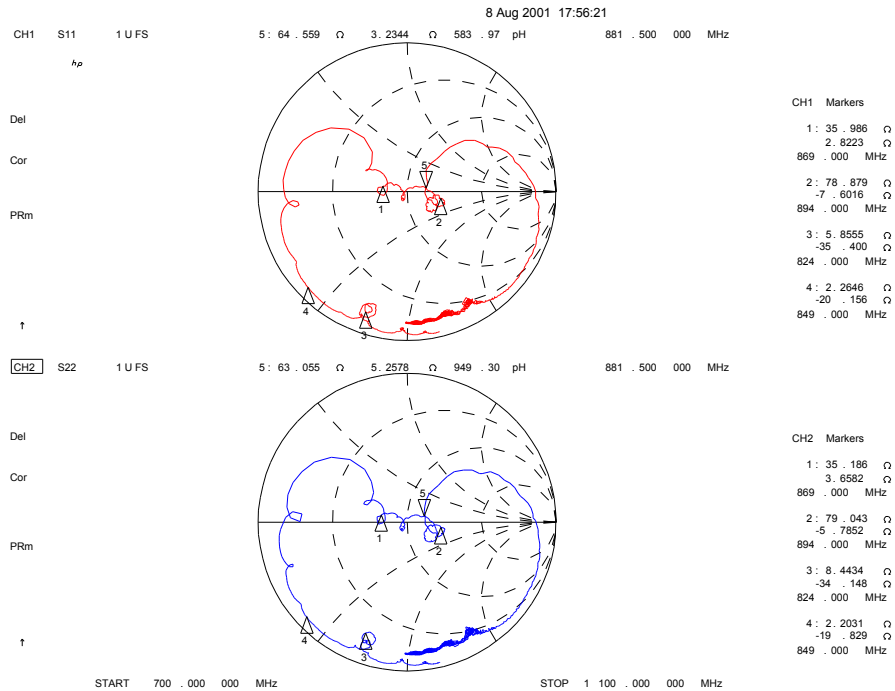
Measured Results

S21 Plot of Jig-Mounted Sample at Room Temperature



FSRS0881H1, Module Spec

Impedance and VSWR Plot of Jig-Mounted Sample at Room Temperature



FSRS0881H1, Module Spec

Wide Band Plot of Jig-Mounted Sample at Room Temperature

