

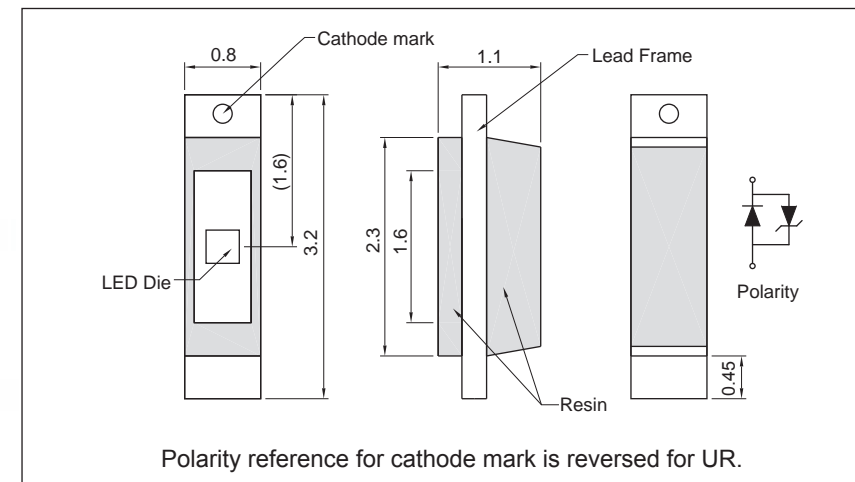
### Features

- Chip LED ( 3.2x1.1x0.8 )

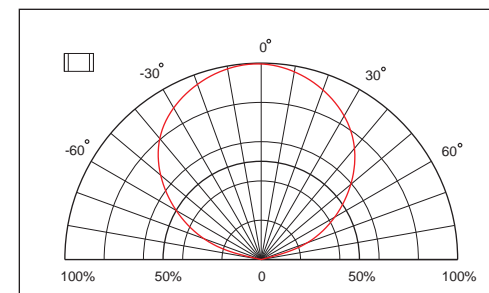
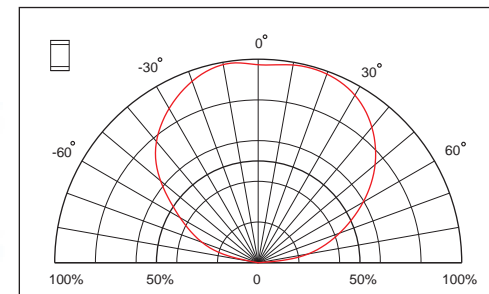


### Package Outline Dimensions

(Unit: mm Tolerance:±0.1)

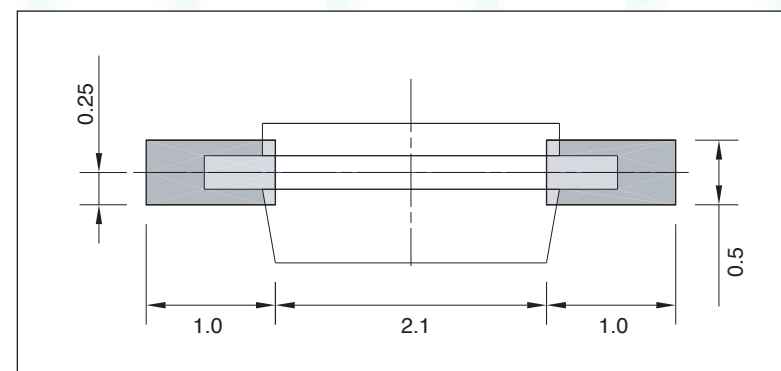


### Directive Characteristics



### Recommended Soldering Pattern

(Unit:mm)



### Absolute Maximum Ratings

(Ta=25°C)

Item	Symbol	InGaN	Unit
Power Dissipation	$P_D$	117	mW
DC Forward Current	$I_F$	30	mA
Pulsed Forward Current	$I_{FP}$	120	mA
Reverse Voltage	$V_R$	5	V
Operating Temperature	$T_{OP}$	-30 to 80	°C
Storage Temperature	$T_{ST}$	-40 to 85	°C

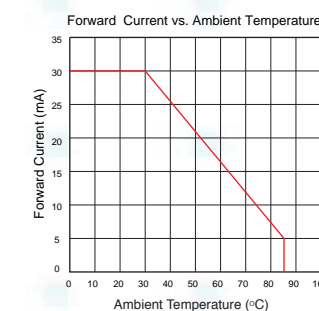
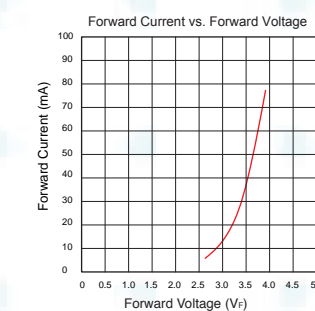
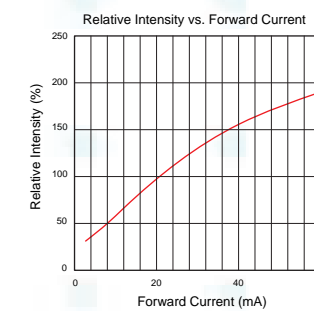
\* 0.1msec pulse, 10% duty cycle.

### Electrical / Optical Characteristics

(Ta=25°C)

Part Number	Emitting color	Material	Forward Voltage( $V_F$ )		Wavelength (nm) typ.			Luminous Intensity (mcd)*		$I_F$ (mA)	Viewing Angle 2θ <sub>1/2</sub>
			typ.	max.	D	P	Δ	min.	typ.		
HT-V118NB	Blue	InGaN	3.3	3.9	470	468	40	80	180	20	120
HT-V118NG	Green	InGaN	3.3	3.9	527	520	40	150	300	20	120
HT-V118TW	White	InGaN	3.3	3.9	x=0.29 y=0.32	-	-	1000	1200	20	120

\*Per NIST standards



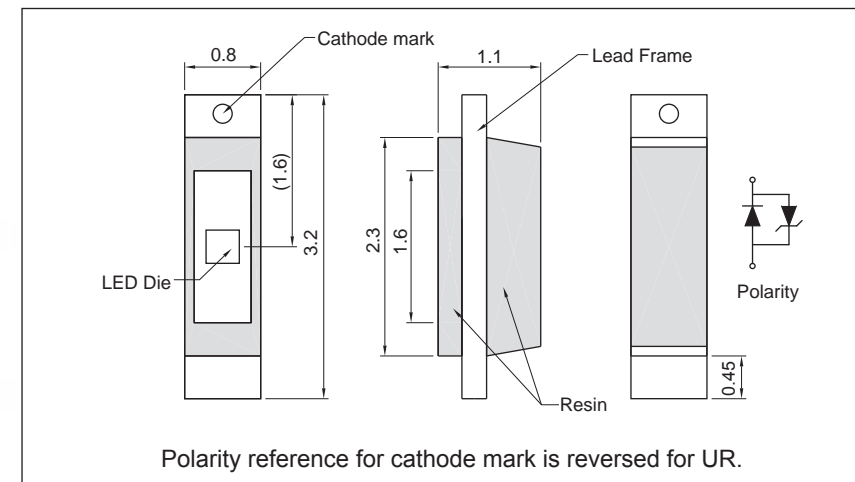
### Features

- Chip LED ( 3.2x1.1x0.8 )

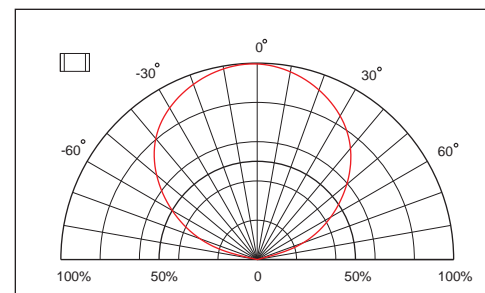
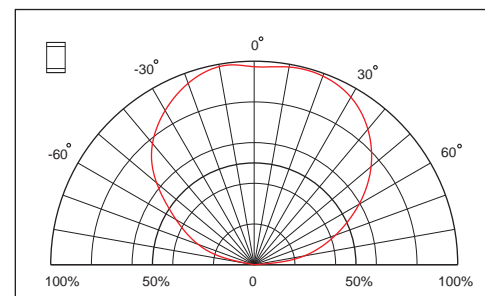


### Package Outline Dimensions

(Unit: mm Tolerance:±0.1)

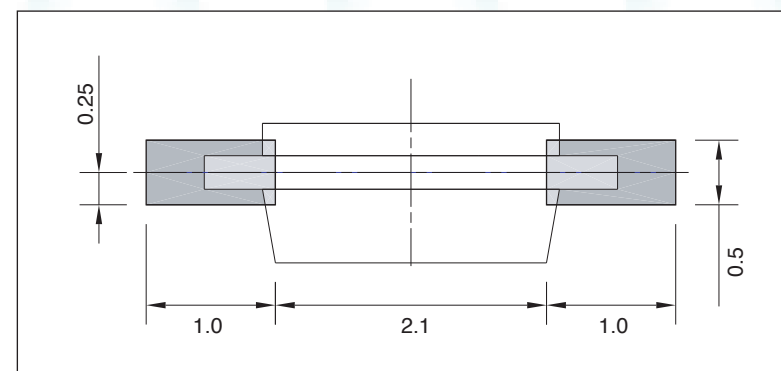


### Directive Characteristics



### Recommended Soldering Pattern

(Unit:mm)



### Absolute Maximum Ratings

(Ta=25°C)

Item	Symbol	InGaN	Unit
Power Dissipation	$P_D$	117	mW
DC Forward Current	$I_F$	30	mA
Pulsed Forward Current	$I_{FP}$	120	mA
Reverse Voltage	$V_R$	5	V
Operating Temperature	$T_{OP}$	-30 to 80	°C
Storage Temperature	$T_{ST}$	-40 to 85	°C

\* 0.1msec pulse, 10% duty cycle.

### Electrical / Optical Characteristics

(Ta=25°C)

Part Number	Emitting color	Material	Forward Voltage( $V_F$ )		Wavelength (nm) typ.			Luminous Intensity (mcd)*		$I_F$ (mA)	Viewing Angle 2θ <sub>1/2</sub>
			typ.	max.	D	P	Δ	min.	typ.		
HT-V118NB	Blue	InGaN	3.3	3.9	470	468	40	80	180	20	120
HT-V118NG	Green	InGaN	3.3	3.9	527	520	40	150	300	20	120
HT-V118TW	White	InGaN	3.3	3.9	x=0.29 y=0.32	-	-	1000	1200	20	120

\*Per NIST standards

