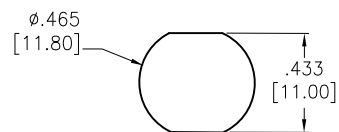
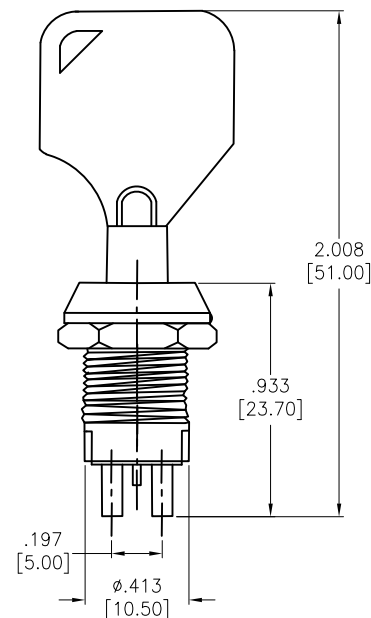
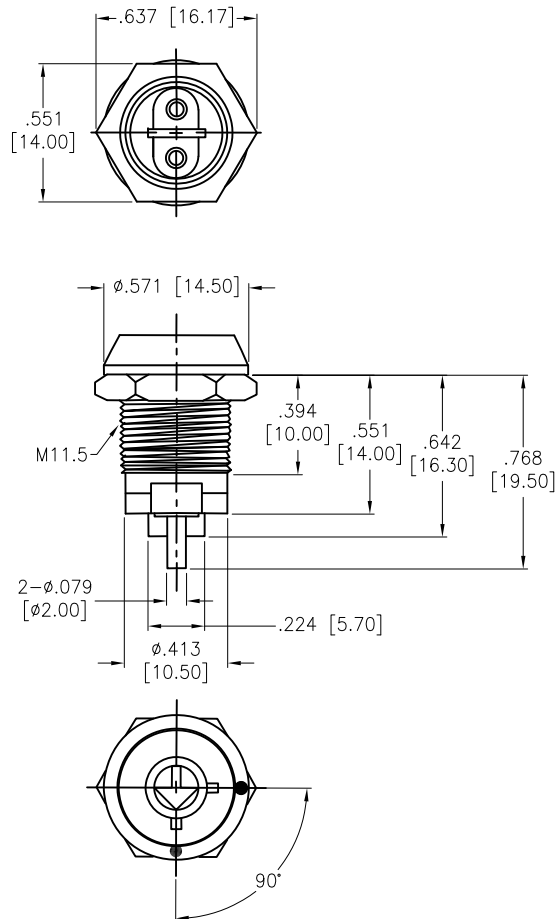


APPROVED: \_\_\_\_\_

DATE: \_\_\_\_\_ TITLE: \_\_\_\_\_

Rev	AWO #	Description	Date	Appr
-		RELEASED	11/10/20	
A		UPDATE DRAWING	5/12/21	JJ/RC
B		ADDED SEPC.	8/31/21	WX/RC
C		ADDED SEPC.	6/15/22	WX/MC



RECOMMENDED PANEL CUT

FUNCTION
SPST, ON-OFF

#### SPECIFICATIONS:

##### Material:

Body: Steel, Polished Chrome, Silver plated

##### Electrical:

The rated load: 125 VAC, 1A

250 VAC, 0.5A

Contact resistance: 100 m $\Omega$  max

Insulation resistance: 100 m $\Omega$  min (500VDC)

Dielectric withstanding voltage: 500 VAC for 1 minute

Mechanical life: 5000 times max

Temperature Rating:

-25°C to +85°C

Environmental:

Lead free, RoHS compliant



UNLESS OTHERWISE SPECIFIED ALL DIMENSIONS ARE INCHES [MM]. TOLERANCES: EXCEPT AS NOTED

INCHES	HOLES
.X $\pm .10$	$\phi$ .X $\pm .10$
.XX $\pm .020$	$\phi$ .XX $\pm .015$
.XXX $\pm .015$	$\phi$ .XXX $\pm .010$

DRAWN	OW	11/10/20
CHECKED	AC	11/10/20
APPROVED		

THIS DRAWING CONTAINS INFORMATION THAT IS PROPRIETARY AND SHOULD NOT BE USED WITHOUT PRIOR WRITTEN PERMISSION FROM ADAM TECH

**ADAM TECH**

909 Rahway Avenue,  
Union, NJ 07083  
Phone: 908-687-5000  
Fax: 908-687-5710

TITLE SWITCH, KEY LOCK, SPST, ON-OFF  
PANEL MOUNT, SOLDER TERMINAL

SIZE X	PART NO. SW-R-K5-X	REV. C
REF: S00206C	SCALE: NTS	SHEET 1 OF 1