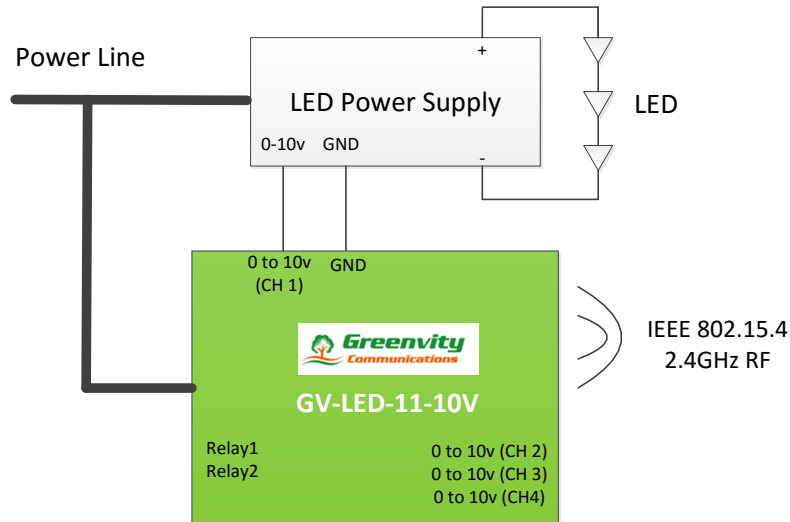


## GV-LED-11-10V

Greenvity's GV-LED-11 is a module featuring the GV7011 Wideband Powerline and 2.4GHz IEEE802.15.4 wireless SoC and PWM and relay outputs.



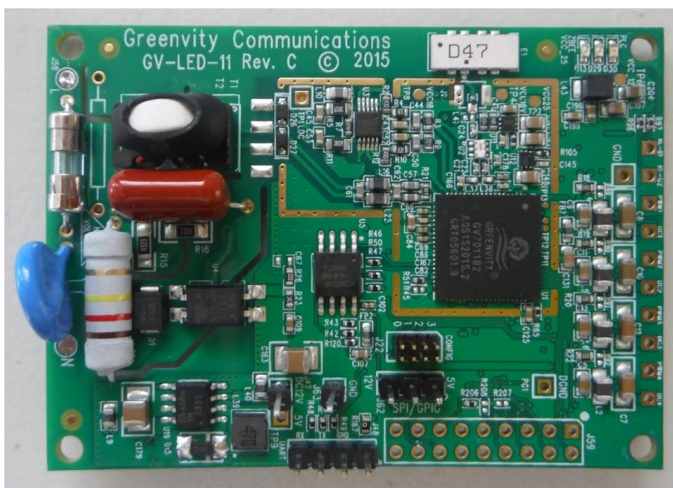
**GV-LED-11-10V Block Diagram**

### PRODUCT DESCRIPTION

The GV-LED-11-10V is a powerline and 2.4 GHz IEEE802.15.4 wireless communications module powered by Greenvity's GV7011 Hybrii-XL SoC. The GV-LED-11-10V delivers half-duplex, asynchronous data communication over (50/60 Hz) AC and DC power lines, wireless communications and features multi-channel, multi-light PWM and relay on/off control. The GV-LED-11-10V is part of Greenvity's family of products meant to operate with the GV-Controller-S and is aimed at smart LED applications.

### GV-LED-11-10V FEATURES

1. On-board GV7011 Wideband Powerline and IEEE802.15.4 wireless SoC
2. Hybrid Mesh which bridges powerline and wireless communications for reliable long range communications
3. LED control: On/Off, dimming, color toning and color temperature control
4. Compatible with major manufacture power supplies and LED drivers
5. Functions with street lights, T5 and T8 LED tubes, downlights, high bay lights
6. Functions on up to 277 VAC and 50/60 Hz AC and DC powerline's
7. Multi-channel/multi-light control that supports up to 6 lights with 4 0 to 10v outputs for dimming and color toning and 2 relay outputs for on/off control
8. Utilizes a single low cost 24 MHz crystal
9. AC to DC module eliminates need for a separate power supply
10. Industrial temperature range from -40 to +85°C



70 x 50 mm<sup>2</sup>

## TARGET APPLICATIONS

- LED Lighting Control for commercial buildings, streets, parking lots and factories
- Controlled LED lighting, signage and display
- Home/Building Energy Management System

## ORDERING CODE

Ordering Code	Description
<b>GV-LED-11-10V</b>	<b>PLC + ZigBee Wireless with 4 0 to 10v and 2 relay outputs</b>
GV-Controller	Universal IoT Hub
GV-Sensor	All-in-One Sensor module
GV7011	Hybrii-XL chip Powerline and IEEE802.15.4 wireless SoC



**Smart LED Lighting Control with Sensor Network**

**For more information, please contact Greenvity**

### Greenvity Communications

Phone: +1 408 935 9434

Email: [sales@greenvity.com](mailto:sales@greenvity.com)

[www.greenvity.com](http://www.greenvity.com)

673S. Milpitas Blvd., Suite 204, Milpitas, CA 95035

The information in this document is subject to change without notice. Greenvity Communications assumes no responsibility for any inaccuracies that maybe contained in this document, and makes no commitment to update or to keep current contained information. Greenvity Communications reserves the right to make changes, at any time, in order to improve reliability, function or design and to attempt to supply the best products to the market. Greenvity, Hybrii, GreenLite, GLED, and GV-HDP1 are either registered trademarks or trademarks of Greenvity Communications. HomePlug and HomePlug Green PHY are trademarks of HomePlug Alliance. All other trademarks or registered trademarks are the property of their respective owners.