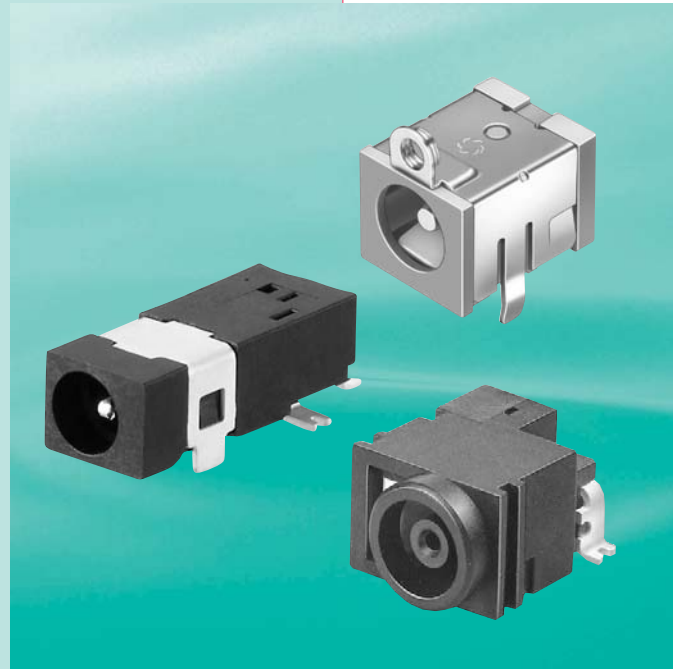


DC Power Jacks



Contents & Specifications 1

DC Power Jacks(EIAJ RC-5320A Standard)

 Product Lineup 2

 DC Power Jacks 3 - 11

DC Power Jacks

 Product Lineup 12

 DC Power Jacks 13 - 16

for Automotive Equipment Use

DC Power Jacks (EIAJ RC-5322 Standard)

 DC Power Jacks 17

for DC-Out

DC-Out Power Jacks (EIAJ RC-5321 Standard)

 DC-Out Power Jacks 18

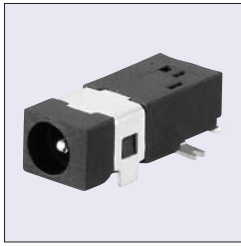
Specifications

Insulation Resistance		100MΩ min. (at 500V DC)
Dielectric Strength		500V AC (r.m.s) / 1 minute
Contact Resistance	Plug-① and Plug-②	50mΩ max.
	others	30mΩ max.

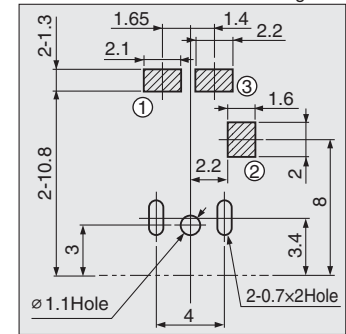
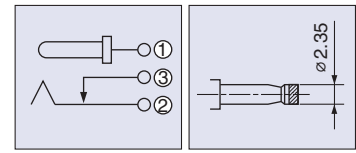
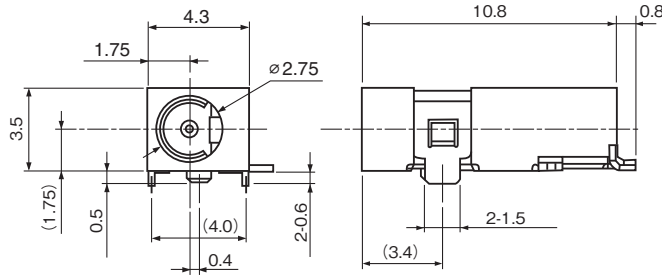
Voltage Classification	Mate Plug (mm)	Schematic	Rated Voltage DC (Nominal Value)	Rated Voltage (V)	Rated Current (A)	Model No.				
						SMT		PCB		for Lead Wire Terminals
						Horizontal Type		Horizontal Type		
1			$V \leq 3.15$	3.15	2	(h=1.75mm) HEC3450 (h=1.8mm) HEC3357 (h=3mm) HEC3350	(h=2.2mm) HEC4306 (h=3mm) HEC3300	(h=3mm) HEC3301	—	—
2			$3.15 < V \leq 6.3$	6.3	2	(h=2.6mm) HEC3654 (h=3.8mm) HEC3650	(h=2.2mm) HEC3604 (h=3mm) HEC3600	(h=6.5mm) HEC3610	—	HEC4670
						—	(h=2.6mm) HEC3616	—	—	
						—	(h=3mm) HEC3690	(h=6.5mm) HEC3680	—	—
3			$6.3 < V \leq 10.5$	10.5	2	(h=3mm) HEC3150	(h=3mm) HEC3110	(h=6.5mm) HEC3100	(ℓ=14mm) HEC3130	—
						—	(h=3mm) HEC4100	(ℓ=14mm) HEC3140	—	
4			$10.5 < V \leq 13.5$	13.5	2	(h=4mm) HEC3850	(h=4mm) HEC4801	(h=6.5mm) HEC3800	(ℓ=14mm) HEC3830	—
5			$13.5 < V \leq 18.0$	18.0	2	—	(h=7mm) HEC3900	—	(ℓ=14mm) HEC3930	—

HEC3450

Voltage Classification 1 Horizontal Type



h=1.75
SMT
With terminal
for reinforcement

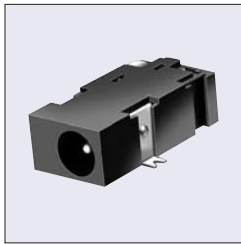


Hole Layout
(Bottom View)

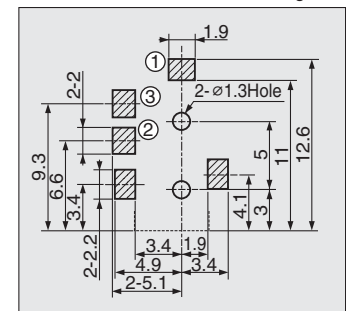
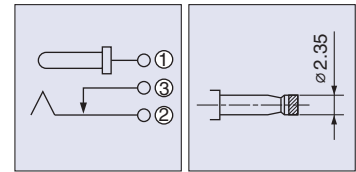
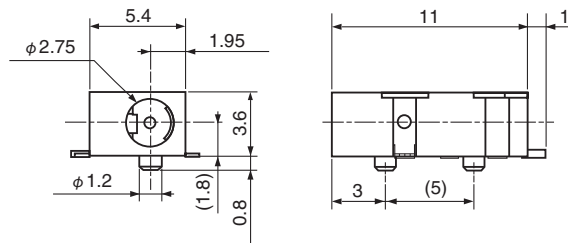
Housing Color	Model No.
Black	HEC3450-012010

HEC3357

Voltage Classification 1 Horizontal Type



h=1.8
SMT

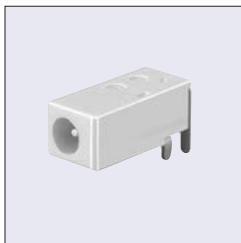


Hole Layout
(Bottom View)

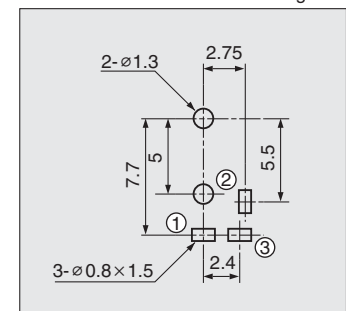
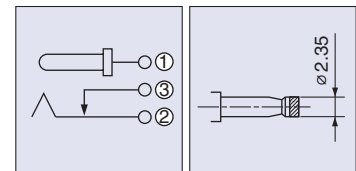
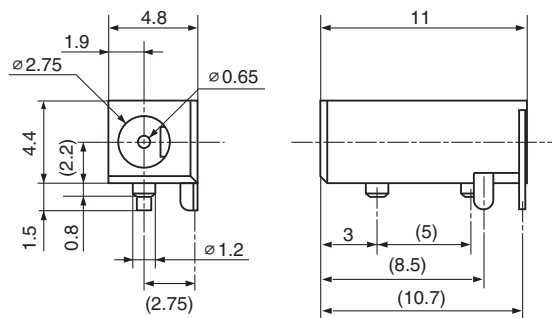
Housing Color	Model No.
Black	HEC3357-012010
Yellow	HEC3357-012020

HEC4306

Voltage Classification 1 Horizontal Type



h=2.2



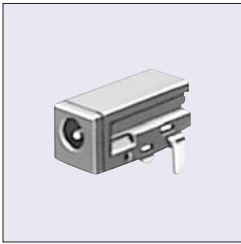
Hole Layout
(Bottom View)

Housing Color	Model No.
Black	HEC4306-010010
Yellow	HEC4306-010020

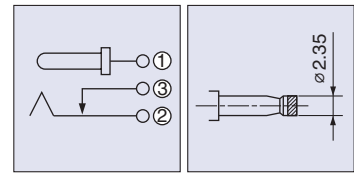
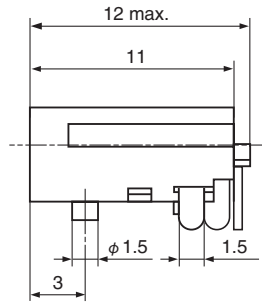
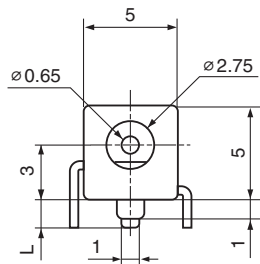
※Hand Soldering Only

HEC3300

Voltage Classification 1 Horizontal Type

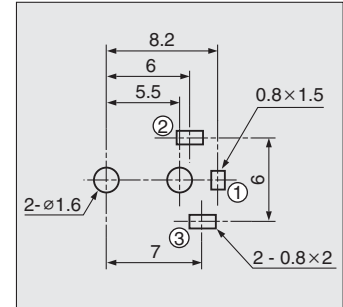


h=3



Schematic

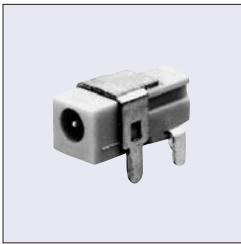
Mate Plug


 Hole Layout
(Bottom View)

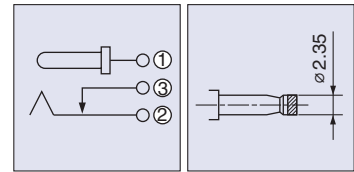
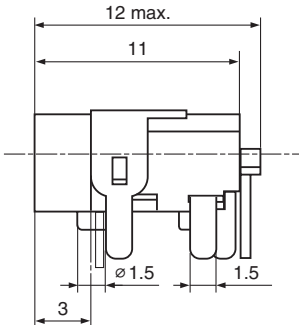
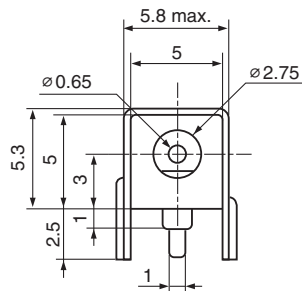
Dimension L	L=1.6	L=2.5
Housing Color		
Black	HEC3300-01-010	HEC3300-010110
Yellow	HEC3300-01-020	HEC3300-010120

HEC3301

Voltage Classification 1 Horizontal Type

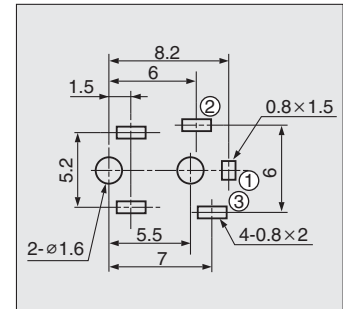


h=3



Schematic

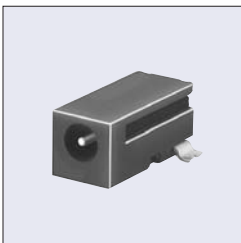
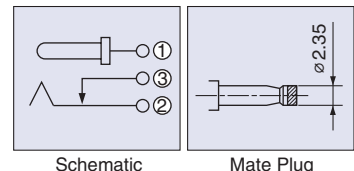
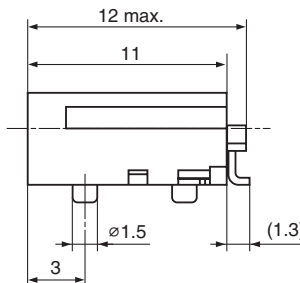
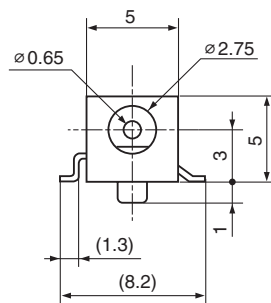
Mate Plug


 Hole Layout
(Bottom View)

Housing Color	Model No.
Black	HEC3301-017110
Yellow	HEC3301-017120

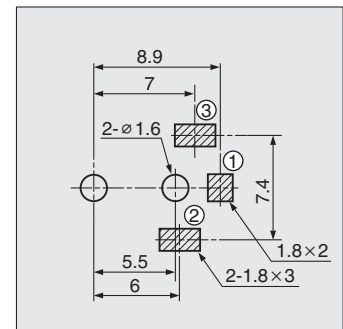
HEC3350

Voltage Classification 1 Horizontal Type


 h=3
SMT


Schematic

Mate Plug


 Hole Layout
(Bottom View)

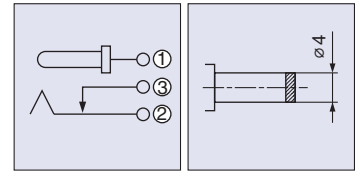
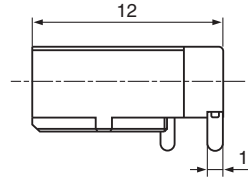
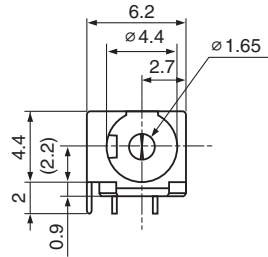
Packaging Style	Bulk (Hand Soldering Only)	Taping (Reflow Soldering)
Housing Color		
Black	HEC3350-010110	HEC3350-012110

HEC3604

Voltage Classification 2 Horizontal Type

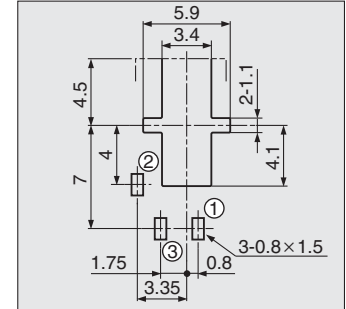


h=2.2



Schematic

Mate Plug



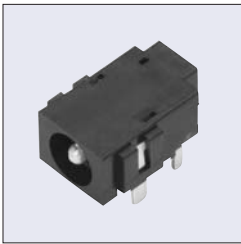
Hole Layout
(Bottom View)

Housing Color	Model No.
Black	HEC3604-010110
Yellow	HEC3604-010120

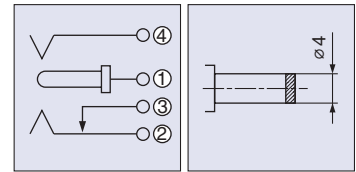
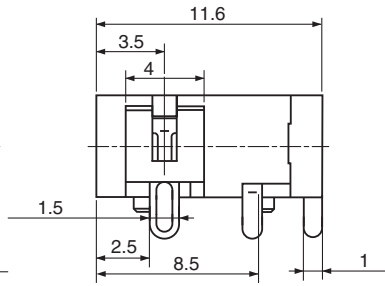
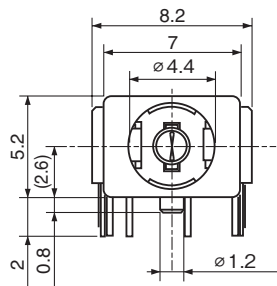
※Hand Soldering Only

HEC3616

Voltage Classification 2 Horizontal Type

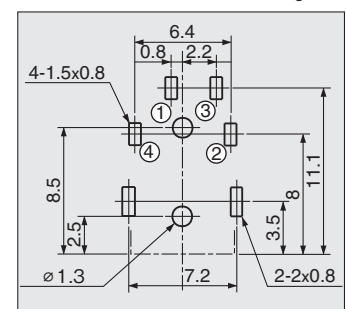


h=2.6



Schematic

Mate Plug

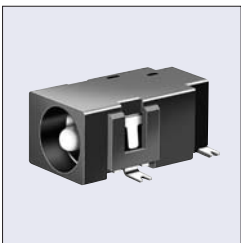


Hole Layout
(Bottom View)

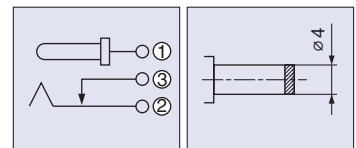
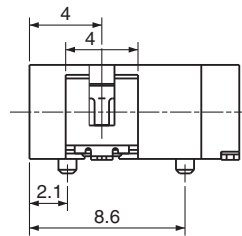
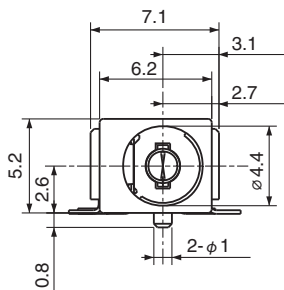
Housing Color	Model No.
Black	HEC3616-010010

HEC3654

Voltage Classification 2 Horizontal Type

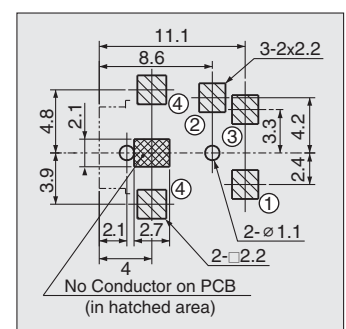


h=2.6
SMT



Schematic

Mate Plug

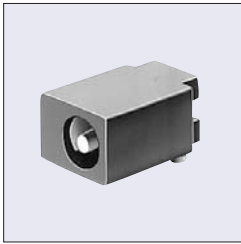


Hole Layout
(Bottom View)

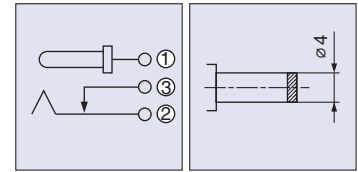
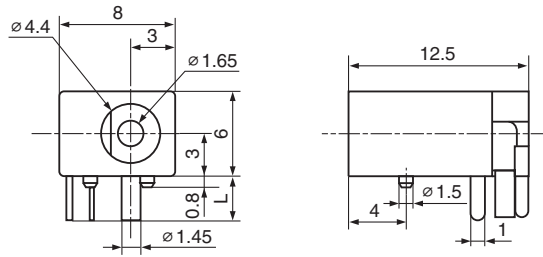
Housing Color	Model No.
Black	HEC3654-012010
Yellow	HEC3654-012020

HEC3600

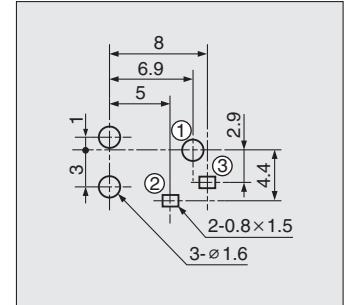
Voltage Classification 2 Horizontal Type



h=3



Schematic Mate Plug

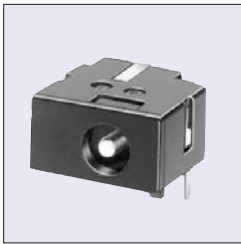


Hole Layout (Bottom View)

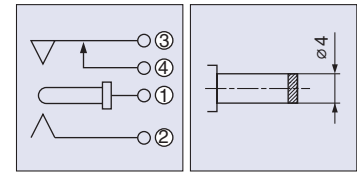
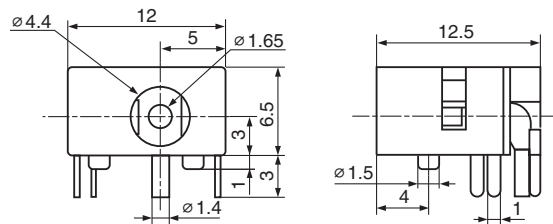
Dimension L	L=1.5	L=2.5	L=3
Housing Color			
Black	HEC3600-016010	HEC3600-010510	HEC3600-016110
Yellow	HEC3600-016020	HEC3600-010520	HEC3600-016120

HEC3690

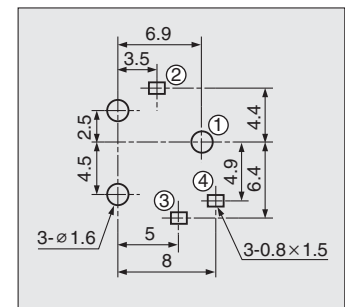
Voltage Classification 2 Horizontal Type



h=3



Schematic Mate Plug

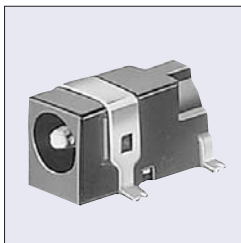


Hole Layout (Bottom View)

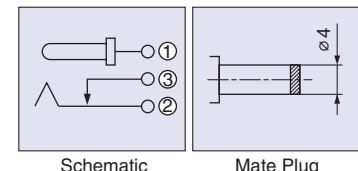
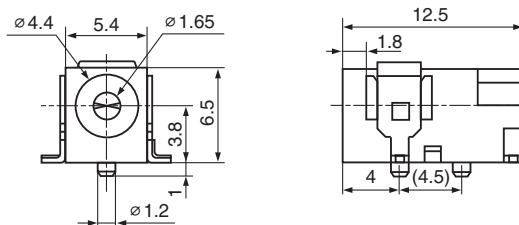
Housing Color	Model No.
Black	HEC3690-015210
Yellow	HEC3690-015220

HEC3650

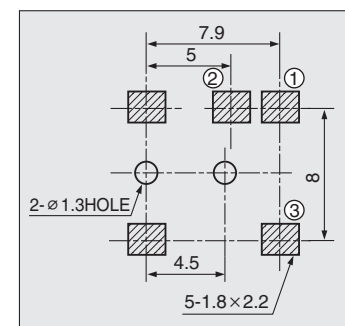
Voltage Classification 2 Horizontal Type



h=3.8
SMT



Schematic Mate Plug

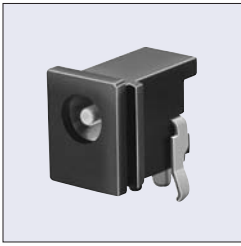


Hole Layout (Bottom View)

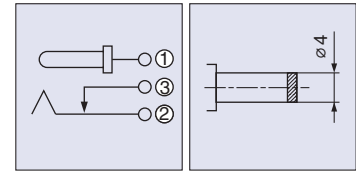
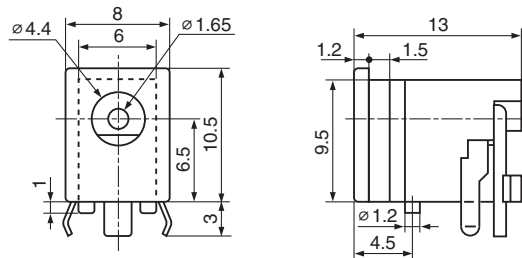
Dimension L	Bulk (Hand Soldering Only)	Taping (Reflow Soldering)
Housing Color		
Black	HEC3650-017010	HEC3650-018010
Yellow	HEC3650-017020	HEC3650-018020

HEC3610

Voltage Classification 2 Horizontal Type

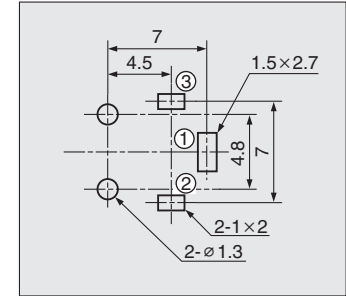


h=6.5



Schematic

Mate Plug

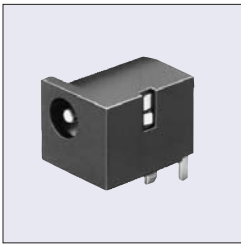


Hole Layout
(Bottom View)

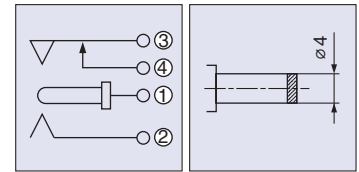
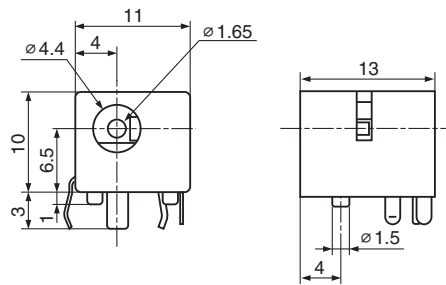
Housing Color	Model No.
Black	HEC3610-010010
Yellow	HEC3610-010020

HEC3680

Voltage Classification 2 Horizontal Type

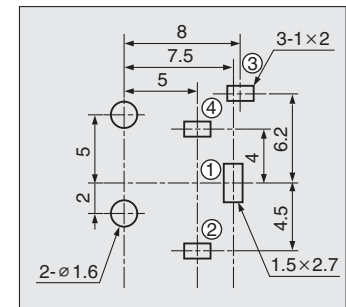


h=6.5



Schematic

Mate Plug



Hole Layout
(Bottom View)

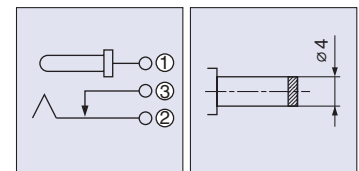
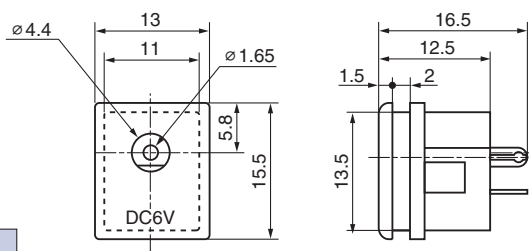
Housing Color	Model No.
Black	HEC3680-010010
Yellow	HEC3680-010020

HEC4670

Voltage Classification 2

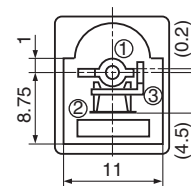


Lead Wire Terminal



Schematic

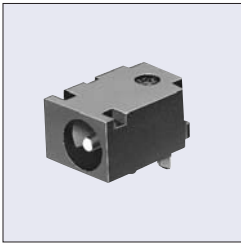
Mate Plug



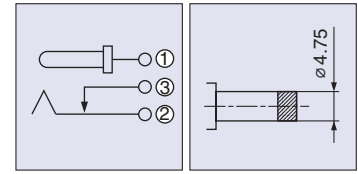
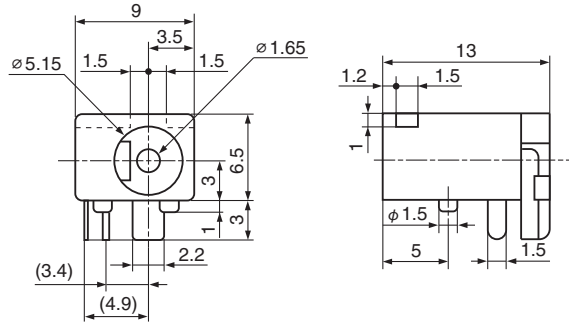
Housing Color	Model No.
Black	HEC4670-010210

HEC3110

Voltage Classification 3 Horizontal Type

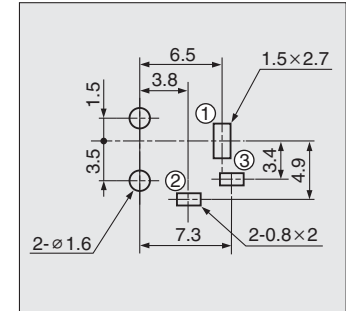


h=3



Schematic

Mate Plug


 Hole Layout
(Bottom View)

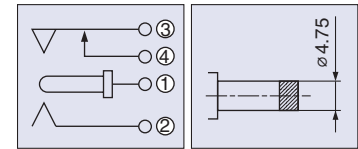
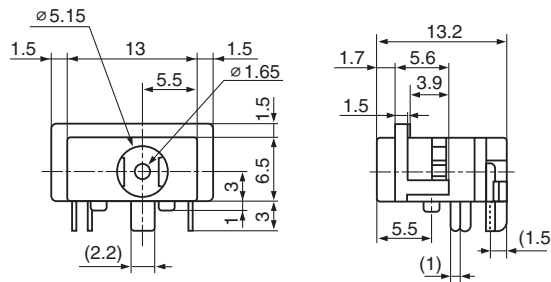
Housing Color	Model No.
Black	HEC3110-01-010
Yellow	HEC3110-01-020

HEC4100

Voltage Classification 3 Horizontal Type

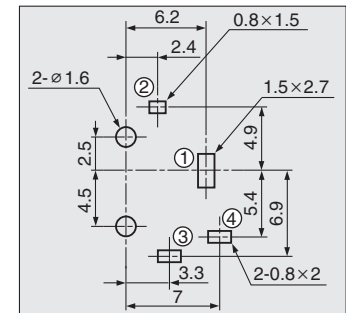


h=3



Schematic

Mate Plug

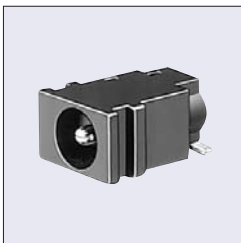
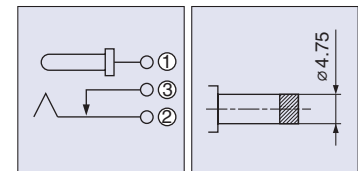
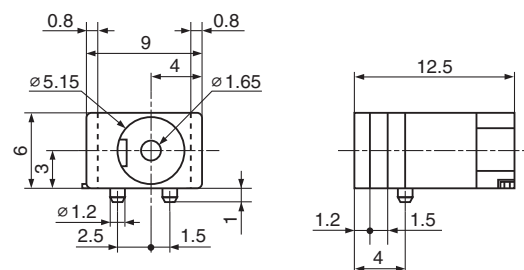

 Hole Layout
(Bottom View)

Housing Color	Model No.
Black	HEC4100-01-010
Yellow	HEC4100-01-020

※Hand Soldering Only

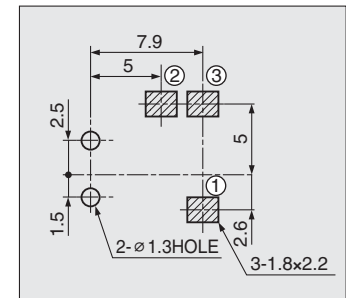
HEC3150

Voltage Classification 3 Horizontal Type


 h=3
SMT


Schematic

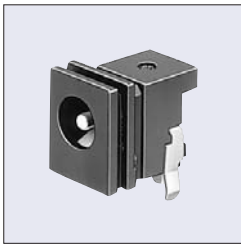
Mate Plug


 Hole Layout
(Bottom View)

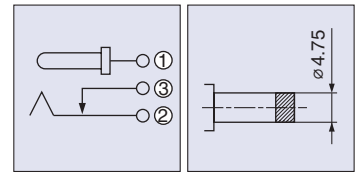
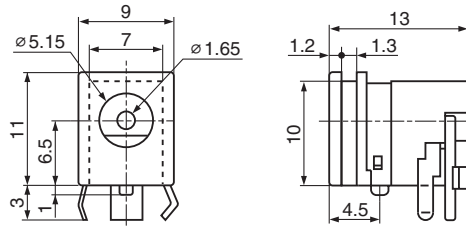
Housing Color	Packaging Style	
	Bulk (Hand Soldering Only)	Taping (Reflow Soldering)
Black	HEC3150-010010	HEC3150-012110
Yellow	HEC3150-010020	HEC3150-012120

HEC3100

電圧区分 3 Voltage Classification 3 Horizontal Type

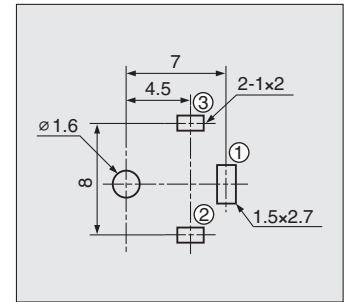


h=6.5



Schematic

Mate Plug

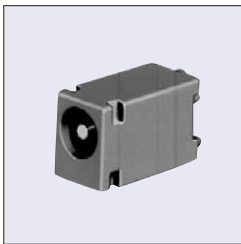


Hole Layout
(Bottom View)

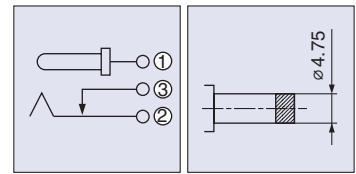
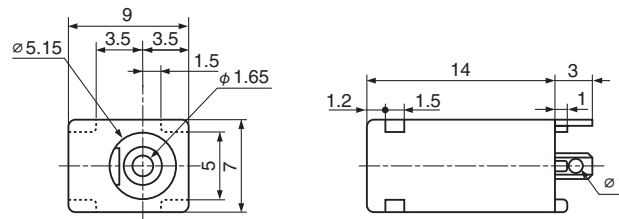
Housing Color	Model No.
Black	HEC3100-010010
Yellow	HEC3100-010020

HEC3130

電圧区分 3 Voltage Classification 3 Vertical Type

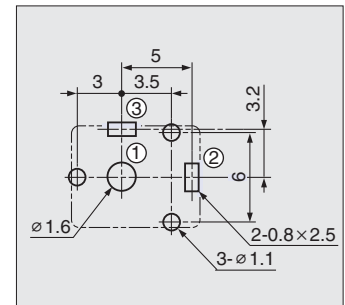


ℓ=14



Schematic

Mate Plug

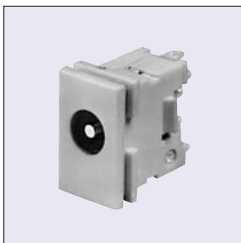


Hole Layout
(Bottom View)

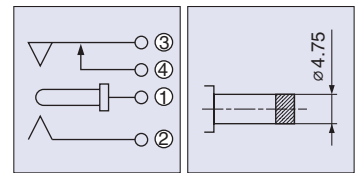
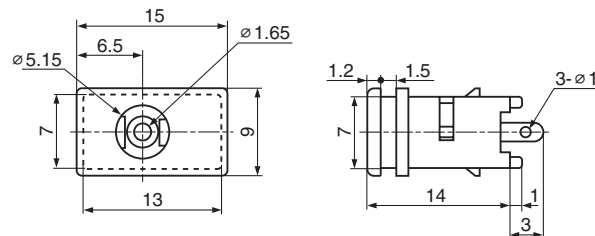
Housing Color	Model No.
Black	HEC3130-010010
Yellow	HEC3130-010020

HEC3140

電圧区分 3 Voltage Classification 3 Vertical Type

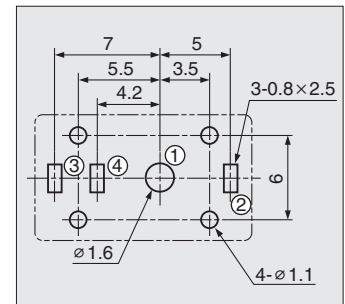


ℓ=14



Schematic

Mate Plug

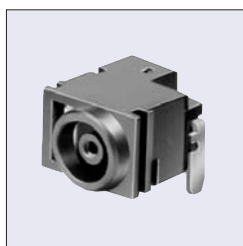


Hole Layout
(Bottom View)

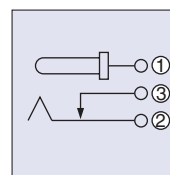
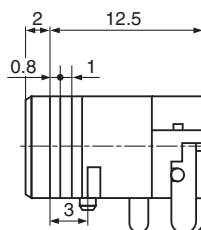
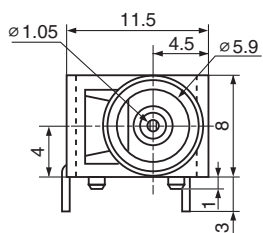
Housing Color	Model No.
Black	HEC3140-010010
Yellow	HEC3140-010020

HEC4801

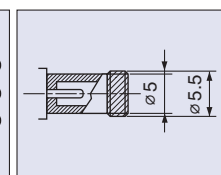
Voltage Classification 4 Horizontal Type



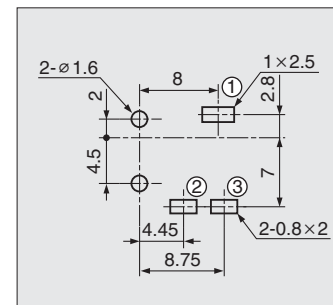
h=4



Schematic



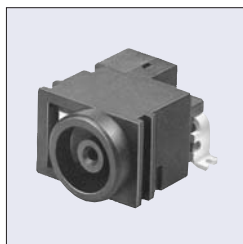
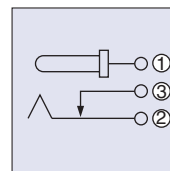
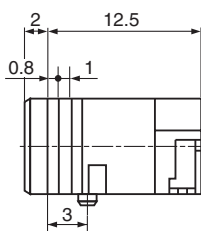
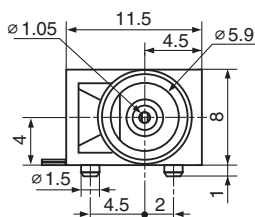
Mate Plug


 Hole Layout
(Bottom View)

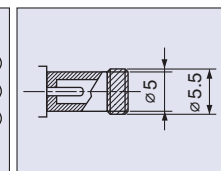
Housing Color	Model No.
Black	HEC4801-010110
Yellow	HEC4801-010120

HEC3850

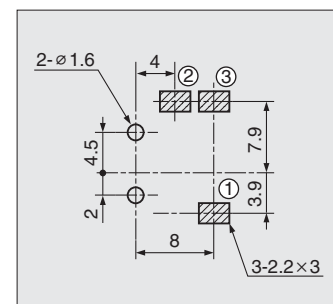
Voltage Classification 4 Horizontal Type


 h=4
SMT


Schematic



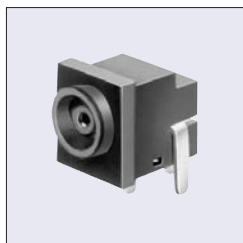
Mate Plug


 Hole Layout
(Bottom View)

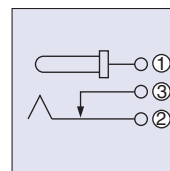
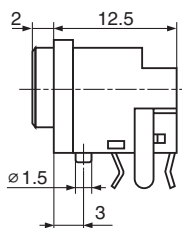
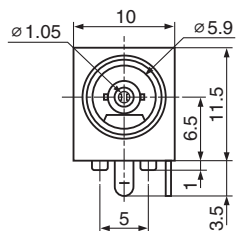
Packaging Style	Bulk (Hand Soldering Only)	Taping (Reflow Soldering)
Housing Color		
Black	HEC3850-010010	HEC3850-012010
Yellow	HEC3850-010020	HEC3850-012020

HEC3800

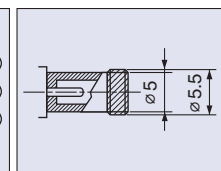
Voltage Classification 4 Horizontal Type



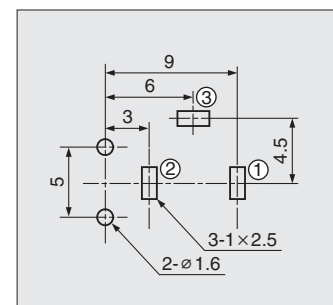
h=6.5



Schematic



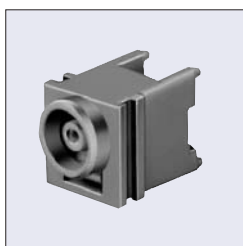
Mate Plug


 Hole Layout
(Bottom View)

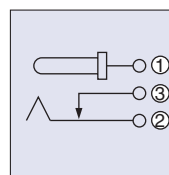
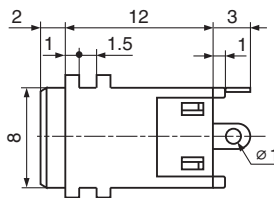
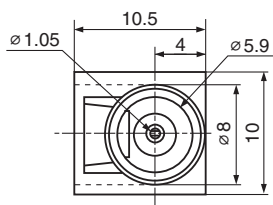
Housing Color	Model No.
Black	HEC3800-01-010
Yellow	HEC3800-01-020

HEC3830

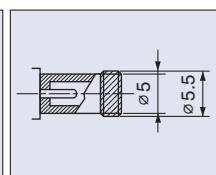
電圧区分 4 Voltage Classification 4 Vertical Type



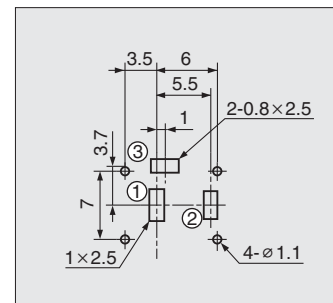
ℓ=14



Schematic



Mate Plug

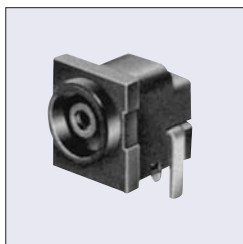


Hole Layout
(Bottom View)

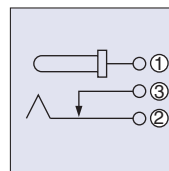
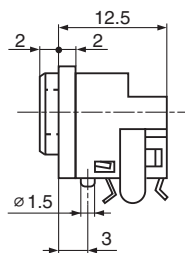
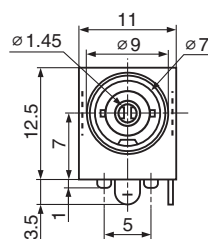
Housing Color	Model No.
Black	HEC3830-010010
Yellow	HEC3830-010020

HEC3900

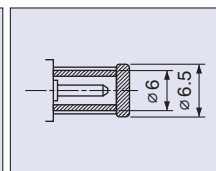
電圧区分 5 Voltage Classification 5 Horizontal Type



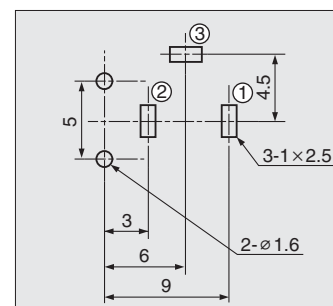
h=7



Schematic



Mate Plug



Hole Layout
(Bottom View)

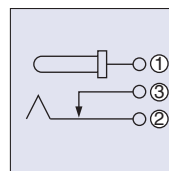
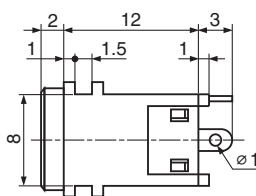
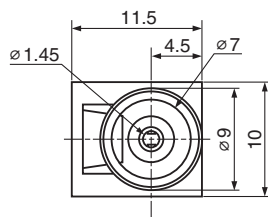
Housing Color	Model No.
Black	HEC3900-010110
Yellow	HEC3900-010120

HEC3930

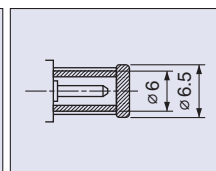
電圧区分 5 Voltage Classification 5 Vertical Type



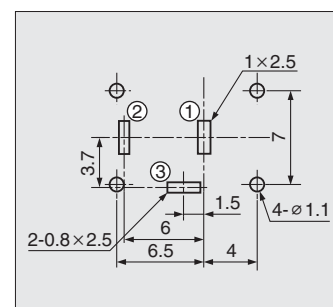
ℓ=14



Schematic

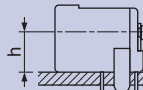
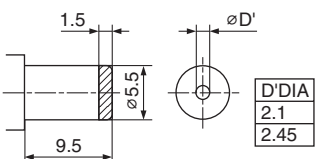
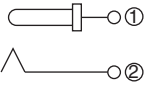
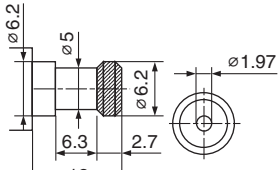
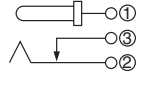
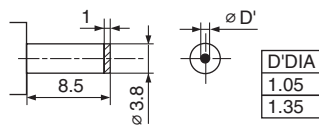
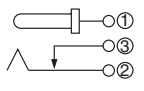
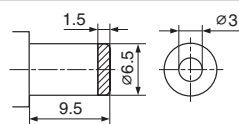
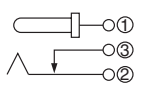
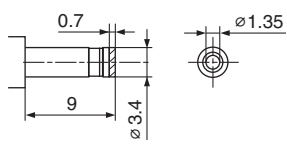
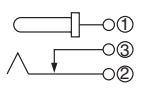


Mate Plug



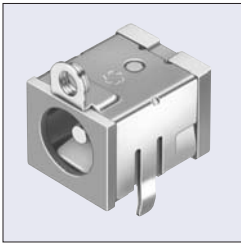
Hole Layout
(Bottom View)

Housing Color	Model No.
Black	HEC3930-010010
Yellow	HEC3930-010020

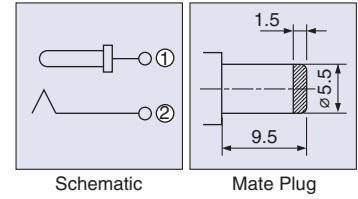
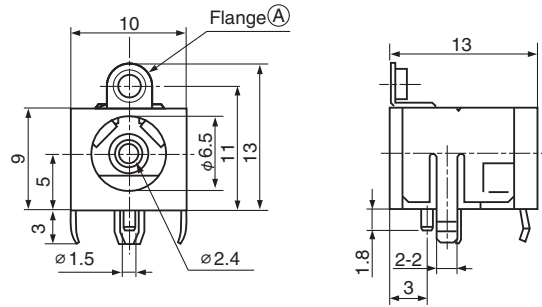
Model	Mate Plug (mm)	Schematic	Pin DIA (mm)	Model No.			
				PCB			
				Horizontal Type 			
Model A			2	(3A 16V DC h=5mm) TCS7382-210177			
				(3A 16V DC h=6.5mm) HEC0470-01-630		(3A 16V DC h=6.5mm) HEC2305-016250	
				(1.6A 12V DC h=6.5mm) HEC2392-0101509			
				(3A 16V DC h=6.5mm) HEC0470-01-640		(3A 16V DC h=6.5mm) HEC2305-016260	
Model B	 <p>Complying to IEC Publication 130-10</p>		1.87 (IEC)	-			
Model C			1	(0.5A 12V DC h=4.7mm) HEC1737-010010		(0.5A 12V DC h=4.7mm) HEC2781-010010	
				(0.5A 12V DC h=4.7mm) HEC1737-010510		(0.5A 12V DC h=4.7mm) HEC2781-010510	
				(0.5A 12V DC h=4.7mm) HEC1737-010020		(0.5A 12V DC h=4.7mm) HEC2781-010020	
			1.3	(0.5A 12V DC h=4.7mm) HEC1737-010520		(0.5A 12V DC h=4.7mm) HEC2781-010520	
Model D			2.95	-			
Model E			1.3	(0.5A 12V DC h=2.5mm) HEC2707-012010		(0.5A 12V DC h=2.5mm) HEC2711-01-620	
				(0.5A 12V DC h=2.5mm) HEC2711-01-020		(0.5A 12V DC h=2.5mm) HEC2712-01-620	

TCS7382-210177

Model A Horizontal Type

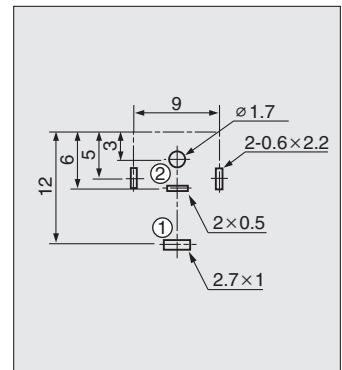


h=5
Rating: 3A 16V DC



Schematic

Mate Plug

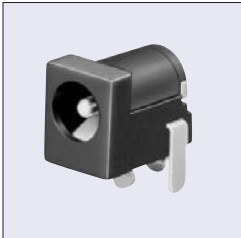


Hole Layout
(Bottom View)

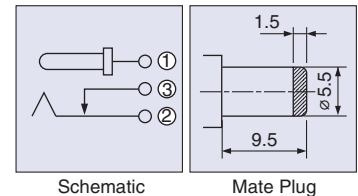
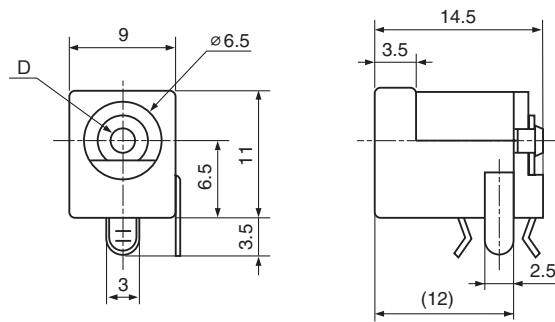
Housing Color	Model No.	Flange (A)
Black	TCS7382-211177	With
Yellow	TCS7382-210177	With
Black	TCS7382-011177	Without
Yellow	TCS7382-010177	Without

HEC0470-01-630

Model A Horizontal Type

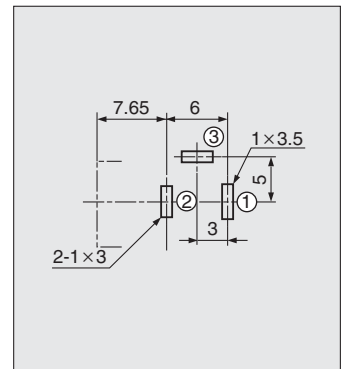


h=6.5
Rating: 3A 16V DC



Schematic

Mate Plug

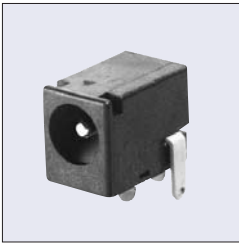


Hole Layout
(Bottom View)

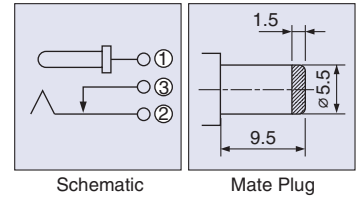
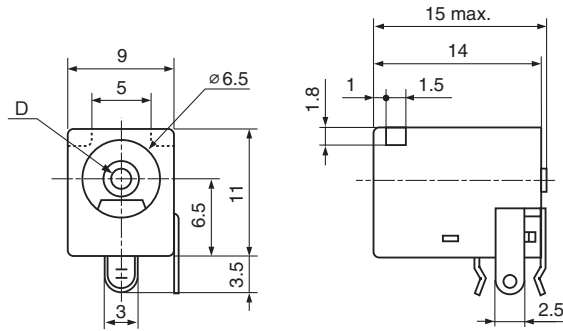
Dimension D	Model No.
∅2	HEC0470-01-630
∅2.35	HEC0470-01-640

HEC2305-016250

Model A Horizontal Type

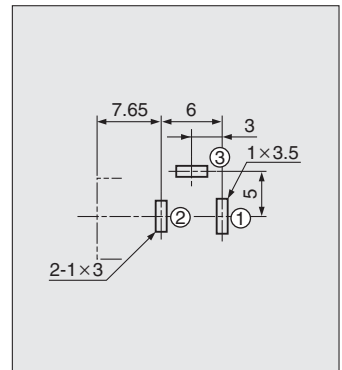


h=6.5
Rating: 3A 16V DC



Schematic

Mate Plug

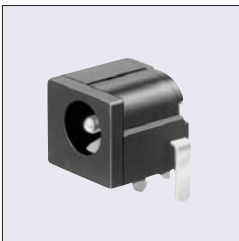


Hole Layout
(Bottom View)

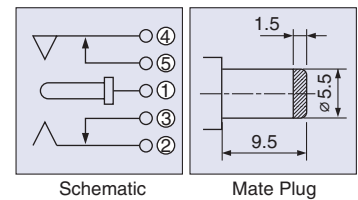
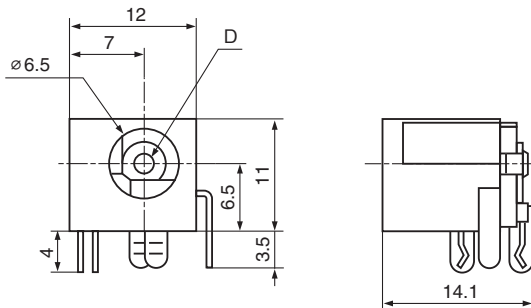
Dimension D	Model No.
∅2	HEC2305-016250
∅2.35	HEC2305-016260

HEC2392

Model A Horizontal Type

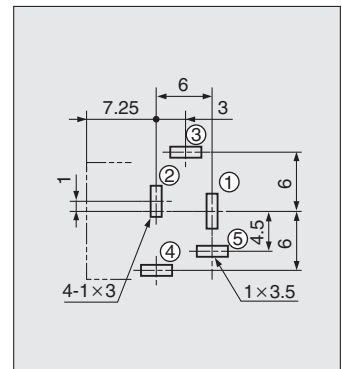


h=6.5
Rating: 2A 12V DC
1.6A 12V DC
(Terminal ②-③
④-⑤)



Schematic

Mate Plug



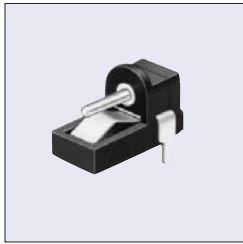
Hole Layout
(Bottom View)

Dimension D	Model No.
∅2	HEC2392-0101509

※Hand Soldering Only

HEC1737-010010

Model C Horizontal Type



h=4.7
Rating: 0.5A 12V DC

Fig-1

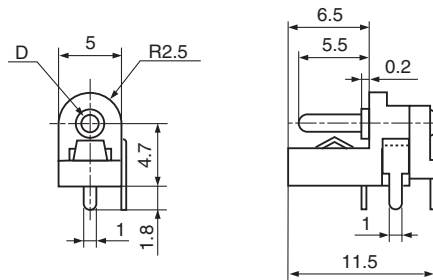
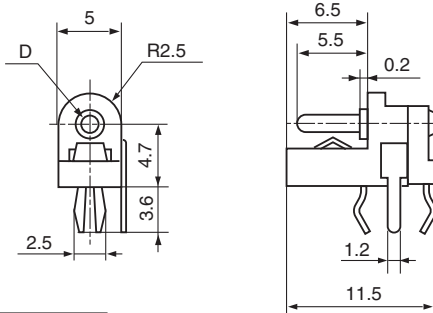


Fig-2



Dimension D	Fig-1	Fig-2
∅ 1	HEC1737-010010	HEC1737-010510
∅ 1.3	HEC1737-010020	HEC1737-010520

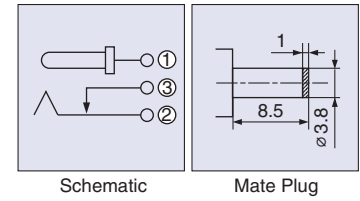


Fig-1

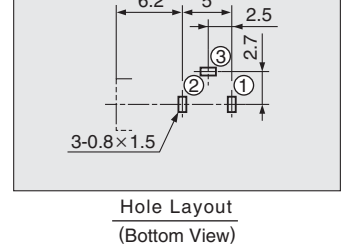
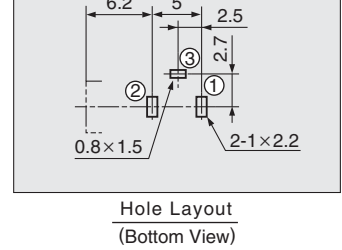


Fig-2



HEC2781-010010

Model C Horizontal Type



h=4.7
Rating: 0.5A 12V DC

Fig-1

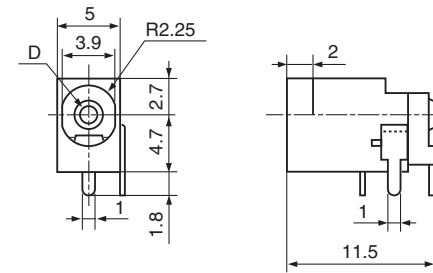
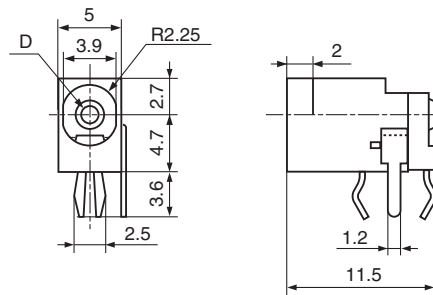


Fig-2



Dimension D	Fig-1	Fig-2
∅ 1	HEC2781-010010	HEC2781-010510
∅ 1.3	HEC2781-010020	HEC2781-010520

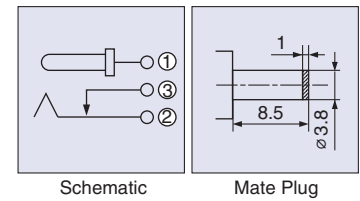


Fig-1

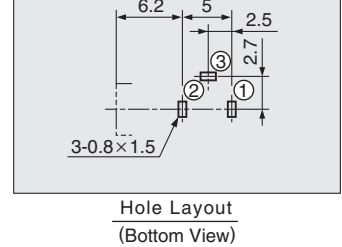
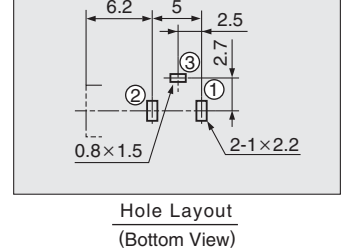


Fig-2

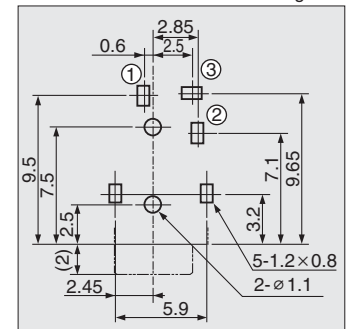
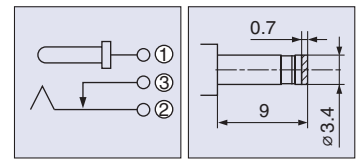
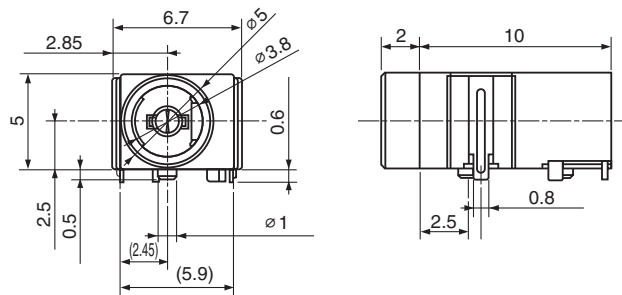


HEC2707

Model E Horizontal Type



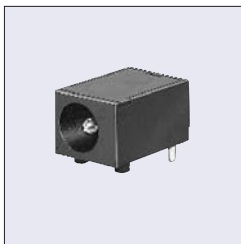
h=2.5
 Rating: 0.5A 12V DC
 With terminal for reinforcement



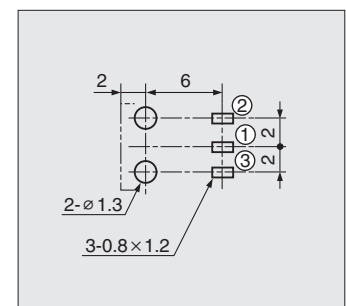
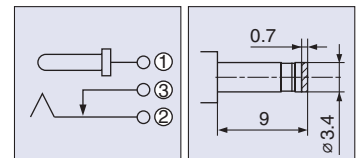
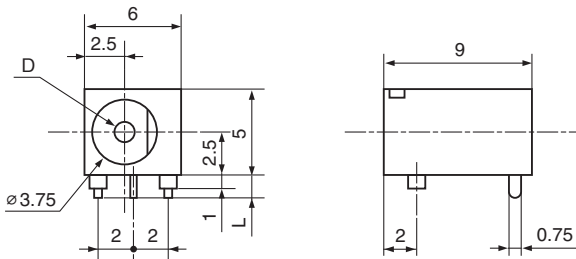
Housing Color	Model No.
Black	HEC2707-012010

HEC2711-01-020

Model E Horizontal Type



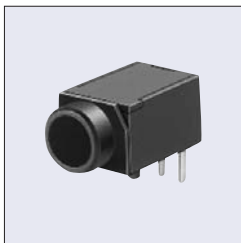
h=2.5
 Rating: 0.5A 12V DC



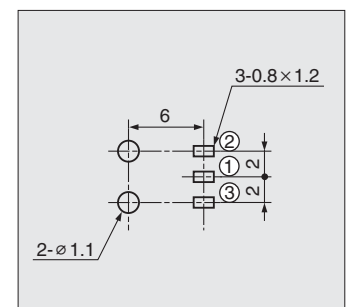
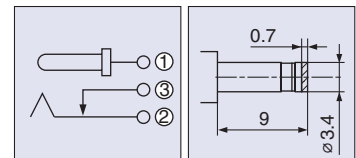
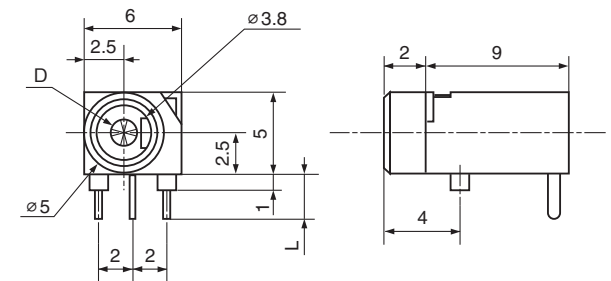
Dimension		Model No.
D	L	
$\phi 1.3$	1.5	HEC2711-01-020
	3	HEC2711-01-620

HEC2712-01-620

Model E Horizontal Type



h=2.5
 Rating: 0.5A 12V DC



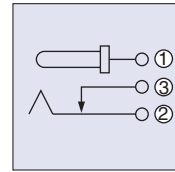
Dimension		Model No.
D	L	
$\phi 1.3$	1.5	HEC2712-010120
	3	HEC2712-01-620

HEC7000

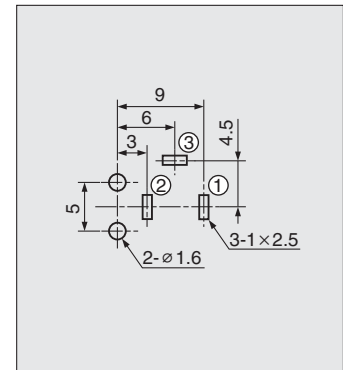
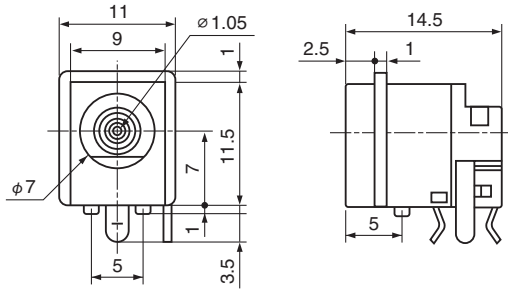
Horizontal Type



h=7
 DC 12 / 24 V
 for Power Supply to Electronic
 Equipment Used in a Car



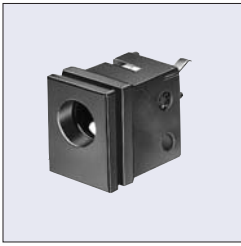
Schematic


 Hole Layout
 (Bottom View)

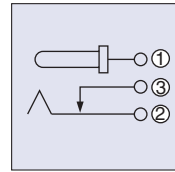
Housing Color	Model No.
Black	HEC7000-010010
Yellow	HEC7000-010020

HEC8630

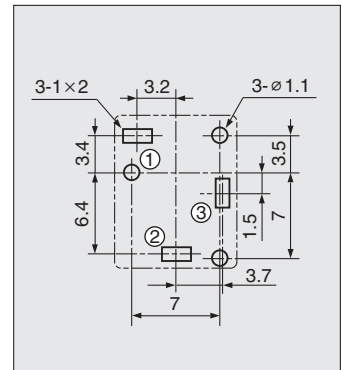
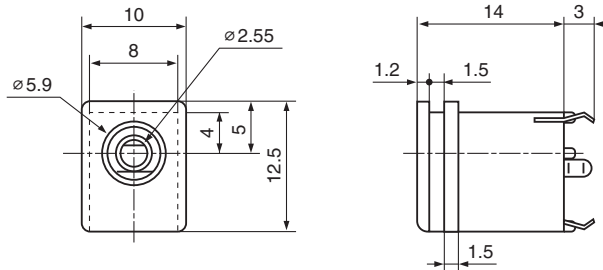
Voltage Classification 2 ($3.15 < V \leq 6.3$) Vertical Type



$l=14$



Schematic

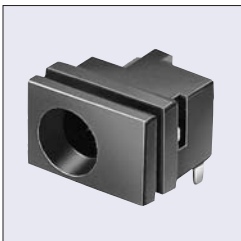


Hole Layout
(Bottom View)

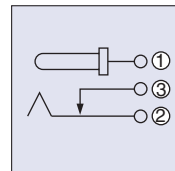
Housing Color	Model No.
Black	HEC8630-010010

HEC8110

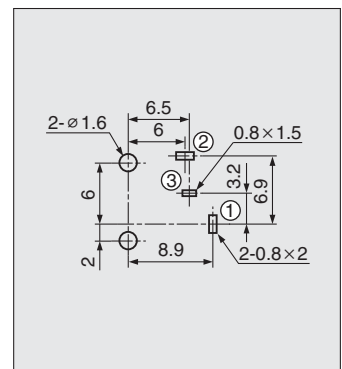
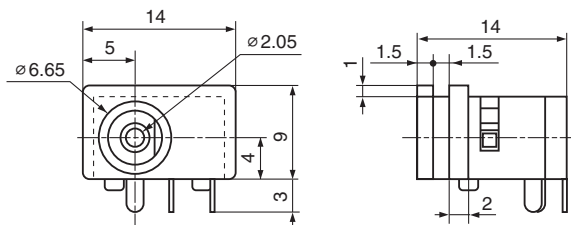
Voltage Classification 3 ($6.3 < V \leq 10.5$) Horizontal Type



$h=4$



Schematic



Hole Layout
(Bottom View)

Housing Color	Model No.
Black	HEC8110-010010

Model No. Table

Model No.	Page								
HEC0470	13	HEC3100	9	HEC3357	3	HEC3680	7	HEC4306	3
HEC1737	15	HEC3110	8	HEC3450	3	HEC3690	6	HEC4670	7
HEC2305	14	HEC3130	9	HEC3600	6	HEC3800	10	HEC4801	10
HEC2392	14	HEC3140	9	HEC3604	5	HEC3830	11	HEC7000	17
HEC2707	16	HEC3150	8	HEC3610	7	HEC3850	10	HEC8110	18
HEC2711	16	HEC3300	4	HEC3616	5	HEC3900	11	HEC8630	18
HEC2712	16	HEC3301	4	HEC3650	6	HEC3930	11	TCS7382	13
HEC2781	15	HEC3350	4	HEC3654	5	HEC4100	8		



<http://www.hosiden.com>

Head Office

4-33, Kitakyuhoji 1-chome, Yao-city, Osaka 581-0071, Japan
Phone : +81-72-993-1010 Fax : +81-72-994-5101

Japan Overseas Division :

4-33, Kitakyuhoji 1-chome, Yao-city, Osaka 581-0071, Japan
Phone : +81-72-993-1010 Fax : +81-72-924-8937

China Hosiden Electronics(Shanghai) Co., Ltd.

Room 10-11, 13th Floor, MAXDO Center, Xing-Yi Road, Chang-Ning District, Shanghai China
Phone : +86-21-5208-1488 Fax : +86-21-5208-1480

Hosiden (Shenzhen) Co., Ltd.

Room 3818, Changping Commercial Building, Honghua Road,
Futian Free Trade Zone, Shenzhen, China
Phone : +86-755-8348-0952 Fax : +86-755-8359-7722

Hong Kong Hong Kong Hosiden Ltd.

33, Tseuk Luk Street, 6/F-A San Po Kong, Kowloon, Hong Kong
Phone : +852-23238181 Fax : +852-23520425

Taiwan Taiwan Hosiden Co., Ltd.

10F, No.116, Nanking East Road Sec. 2, Taipei, Taiwan
Phone : +886-2-2571-0017 Fax : +886-2-2561-6413

Singapore Hosiden Singapore Pte. Ltd.

28, Genting, Lane, #04-06/07, Platinum 28, Singapore 349585
Phone : +65-6296-8100 Fax : +65-6296-8300

Malaysia Hosiden Corporation(M)Sdn. Bhd.

Lot1, Jalan P/1A, Bangi, Industrial Estate, 43650
Bander Baru Bangi, Selangor Darul Ehsan, Malaysia
Phone : +60-3-8925-8655 Fax : +60-3-8926-6122

Thailand Hosiden (Thailand) Co., Ltd.

889 THAI CC TOWER, 21 Floor, Room 212, South Sathorn Road,
Kwaeng Yannawa, Khet Sathorn, Bangkok 10120, Thailand
Phone : +66-2-673-9760, 9761 Fax : +66-2-673-9762

Germany Hosiden Europe GmbH

Head Office
Graf-Recke-Straße 82, 40239 Düsseldorf, Germany
Phone : +49-211-96493-0 Fax : +49-211-96493-90

France Branch office Paris

45 rue Anatole France, 92300 LEVALLOIS-PERRET, France
Phone : +33-1-4192-9530 Fax : +33-1-4192-9539

U.K. Hosiden Besson Ltd.

11 St. Joseph's Trading Estate St. Joseph's Close, Hove, East Sussex,
BN3 7EZ, United Kingdom
Phone : +44-1273-860000 Fax : +44-1273-777501

U.S.A. Hosiden America Corp.

Head Office
120 East State Parkway, Schaumburg, IL, 60173, U.S.A.
Phone : +1-847-885-8870 Fax : +1-847-885-0063

San Jose Sales Office

3031 Tisch Way, Suite, 806 San Jose, CA. 95128, U.S.A.
Phone : +1-408-985-8780 Fax : +1-408-985-8785

Detroit Sales Office

28970 Cabot Drive, Suite 600, Novi, MI 48377
Phone : +1-248-489-0174 Fax : +1-248-489-1154

CAUTION FOR SAFETY

Please use our products properly based on our
Drawing and Specification.