



Supermicro® Products

- [Products](#)
- [SuperServer®](#)
- [Motherboards](#)
- [Chassis](#)
- [SuperWorkstations](#)
- [SuperBlade®](#)
- [MicroBlade \(new\)](#)
- [Ultra \(new\)](#)
- [WIO](#)
- [EX DP 32 DIMMs](#)
- [Twin Solutions](#)
- [GPU / Xeon Phi™](#)
- [MicroCloud](#)
- [Storage](#)
- [Networking](#)
- [Embedded](#)
- [Gaming](#)
- [AMD Solutions](#)
- [Power Supplies](#)
- [Accessories](#)
- [SuperRack®](#)
- [Server Management](#)

➔ Supermicro® Display Solutions

Supermicro's growing line of attractive display solutions includes the MCP-220-00096-0B OLED display and the MCP-220-00095-0B LCD display. Designed to be compatible with Supermicro's broad line of SuperServer® systems, these display solutions allow customers to significantly improve data center costs and productivity through ease of maintenance, rapid trouble location and isolation, and improved diagnostics and management. Each Supermicro display module supports a JAVA-based API compatible with 32-bit & 64-bit Windows and Linux, and includes an attractive GUI base that supports a complete list of LCD functions (Company Name, Clock, System, Hardware, Network Information, Monitoring System, Usage, and IPMI information).

These Supermicro display solutions will save customers significant development time by integrating all the necessary features through their easy-to-use USB interfaces. Administrator and craft training time will be minimized through simple and intuitive GUI displays and customized messages designed by the customer. The modules can communicate status information quickly and clearly to remote craft personnel, making them ideal for mission critical environments. Messages can be sent rapidly and easily from a central site to remote sites, facilitating maintenance and troubleshooting to minimize potential server system downtime. These Supermicro display solutions were designed with IPC (Industrial Process Control) and Embedded applications in mind where remote messaging, rapid development, ease of training, and quick response to component failures are important considerations.

Supermicro's two display solution modules are described below.

LCD Screen Module

The Supermicro LCD screen module features green LCD display screen. The module displays two backlighted lines of data with 16 characters per line, and includes 6 front access keys (4-way direction keys and Enter/Cancel buttons), and USB interface with pin header to support up to 100cm of cable connected to a communications terminal.

LCD Manual: [[Download](#)]

➔ LCD Specifications

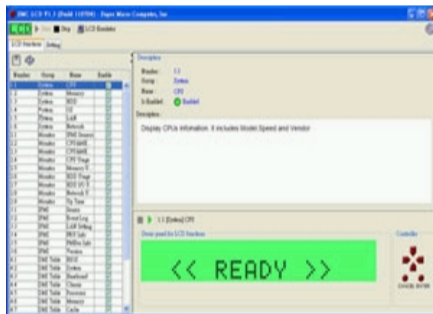
- **LCD Module: 2 lines, 16 characters per line with back lights**
- **USB Interface (cable available for pin header, 100cm)**
- **6 access keys (4 way directions and Enter/Cancel buttons)**

➔ Software Support

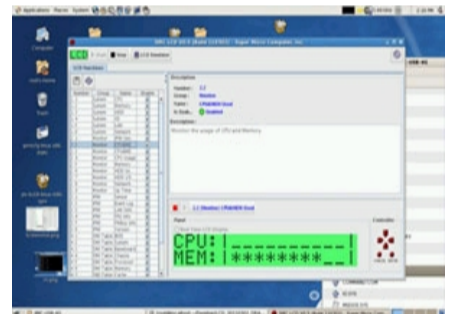
- **JAVA based API compatible w/ Windows 32/64-bit & Linux**
- **GUI based, with complete list of LCD functions**

- ? Company Logo
- ? Clock
- ? System, Hardware, Network Information
- ? Monitoring System, Usage, and IPMI Information

- **OS level support as standard. BIOS level per request.**



LCD GUI in Windows



LCD GUI in Linux

➔ LCD Solutions

IPC Solutions (1U)

MCP-210-00007-01/02/0V

- Complete black (01) / beige (02) / silver (0V) 1U LCD bezel
- Compatible chassis series: SC813, SC813M, SC815, SC819
- [Download LCD software](#) (for Linux only)
- [Download LCD software](#) (for Windows only)



Embedded Solutions

MCP-210-00033-01/02 (OEM)

- Black (01) / beige (02) front panel with LCD module
- Compatible chassis series: SC512, SC512L, SC512F-260
- [Download LCD software](#) (for Linux only)
- [Download LCD software](#) (for Windows only)



Storage / IPC Solutions

MCP-220-00095-0B

- Black 5.25" LCD tray without rails, supports 1x fixed 3.5" HDD (2x 2.5" HDD with optional bracket)
- Compatible chassis series: SC213, SC219, SC822, SC835, SC833, SC731, SC733, SC732, SC847, SC747
- [Download LCD software](#) (for Linux only)
- [Download LCD software](#) (for Windows only)



OLED Screen Module

The Supermicro OLED screen module features a 1" color display screen using the latest OLED technology. This OLED displays are thinner and lighter than traditional LCD displays, providing better power efficiency and offering wider viewing angles with improved clarity. With four lines of characters and 12 characters per line, the OLED screen module displays vivid colors with 64 x 96 pixels and 16 bit color.

➔ OLED Specifications

- **OLED Module: 4 lines, 12 characters per line with back lights**
- **USB Interface (cable available for pin header, 100cm)**
- **6 access keys (4 way directions and Enter/Cancel buttons)**

➔ Software Support

- **JAVA based API compatible w/ Windows and Linux 32/64-bit**
- **GUI based, with complete list of LCD functions**

- ? Company Logo
- ? Clock
- ? System, Hardware, Network Information
- ? Monitoring System, Usage, and IPMI Information
- ? Remote/Local send message

➔ OLED Solutions

3.5" Solutions

- [Download OLED software](#)

