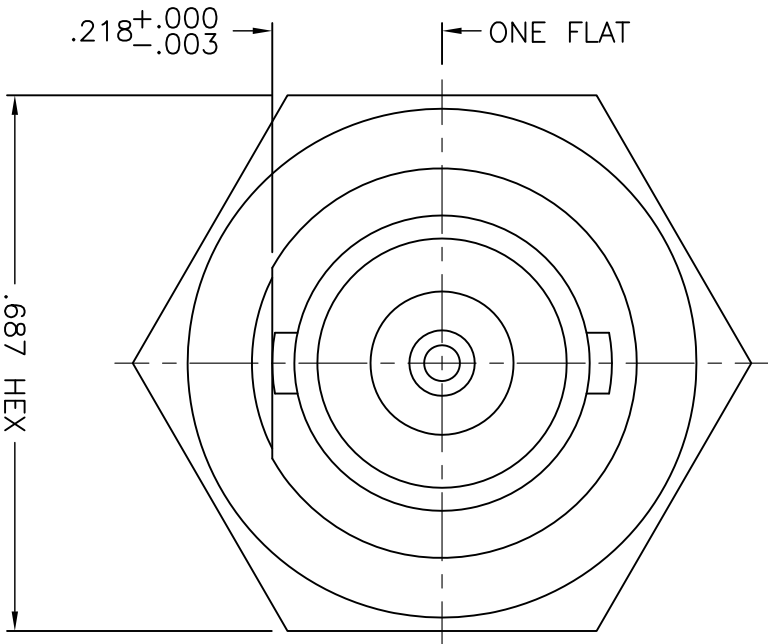


1016-015-A59E



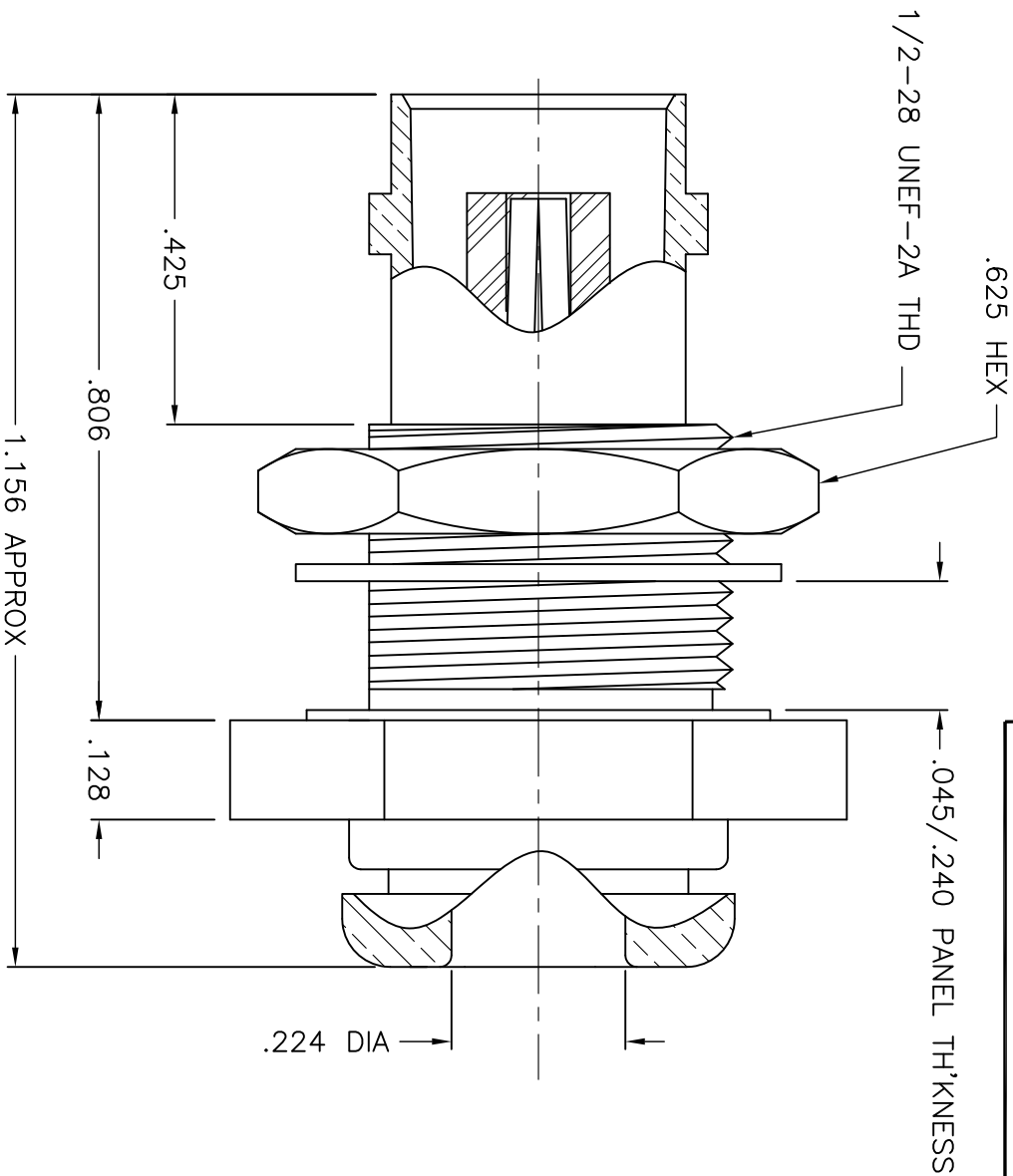
VIEW SHOWN WITH HEX. NUT
& LOCKWASHER REMOVED

NOTES:

1. ASSEMBLED CONNECTOR INTERFACE IS DESIGNED IN ACCORDANCE WITH MIL-STD-348.
2. MATERIAL: BODY & HEX NUT - BRASS PER ASTM B16
CONTACT - BERYLLIUM COPPER PER ASTM B196.
INSULATOR - TEFLON PER ASTM D4894
GASKET - SILICONE RUBBER PER A-A-59588
ALL OTHER METAL PARTS - BRASS PER ASTM B16
3. FINISHES: CONTACT - GOLD PLATE PER ASTM B488
ALL OTHER METAL PARTS - SILVER PART PER ASTM B700

UNLESS OTHERWISE SPECIFIED: TOLERANCES: 3 PLACES = $\pm .005$, 2 PLACES = $\pm .02$, ANGLES = $\pm 1/2^\circ$

THESE DRAWINGS AND SPECIFICATIONS ARE THE PROPERTY OF DELTA ELECTRONICS MFG CORP. AND SHALL NOT BE REPRODUCED, OR COPIED OR USED AS THE BASIS FOR THE MANUFACTURE OR SALE OF APPARATUS OR DEVICES WITHOUT THEIR EXPRESS WRITTEN CONSENT.



M39012/19-0101

DELTA ELECTRONICS MFG. CORP. Beverly, MA 01915

TITLE:

'BNC' BULKHEAD CLAMP JACK FOR
RG-55B, 58C, 141A, 142B, 223/U CABLE

Drawn by	Scale	Ckd. by	Engr Appd	FILE NAME:
MR 11/20/08	4/1	BUM	MR	1016015A59E-000T

CODE IDENT.-00795

1016-015-A59E