



FASTTRAK

SX4100

QUICK START GUIDE

Version 1.1

© 2005 Promise Technology, Inc. All Rights Reserved.

FastTrak Installation Task List

- Step 1: Unpack your FastTrak, below
 - Step 2: Install the FastTrak Card, page 3
 - Step 3: Install the Disk Drives, page 4
 - Step 4: Create Your Logical Drive, page 6
 - Step 5: Install Software Drivers, page 8
-

Step 1: Unpack your FastTrak

When you receive the FastTrak SX4100 card, the package should contain the items listed below:

- FastTrak SX4100 RAID Controller Card
- Quick Start Guide
- Four internal 4-wire Serial ATA hard drive data cables
- Two Y power splitter cables
- CD with drivers, Web-based Promise Array Management (WebPAM) utility, *WebPAM User Manual* and *FastTrak SX4100 User Manual*

If ANY of the contents are missing or appear to be damaged, please contact your dealer or distributor immediately.



Warning

The electronic components on the FastTrak RAID Controller Card are sensitive to damage from Electro-Static Discharge (ESD). Observe appropriate precautions at all times when handling the FastTrak card or its subassemblies.



Warning

Before installing the adapter into an existing system, backup any important or useful data. Failure to follow this accepted PC practice could result in data loss.



Notes

The FastTrak SX4100 Controller Card is a PCI Plug-n-Play (PnP) device. No changes are necessary in the motherboard CMOS/BIOS Setup for resources or drive types in most applications.

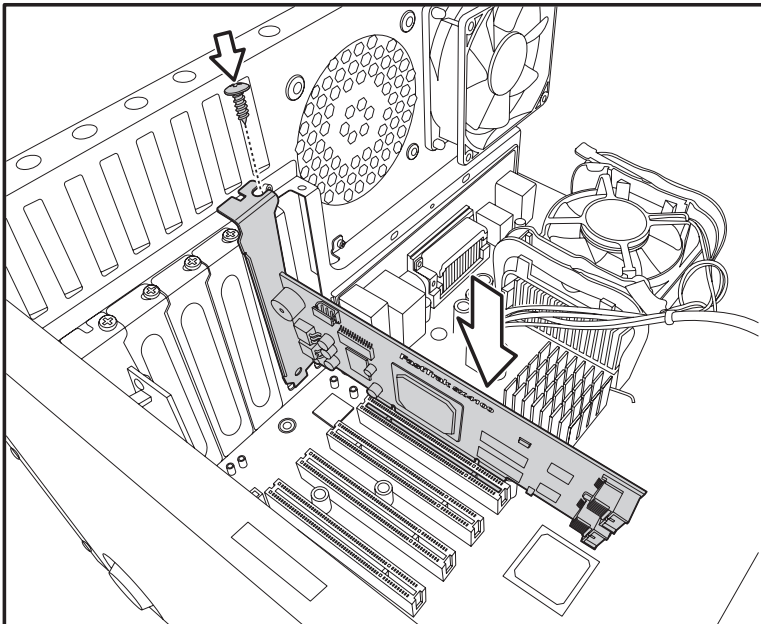
Step 2: Install the FastTrak Card

The FastTrak RAID Controller card fits into any available:

- 32-bit PCI slot (must be PCI 2.3 compliant)
- 32-bit portion of a 64-bit PCI slot

on the PC's motherboard as shown in the illustration.

1. Remove the cover of your system.
2. Remove the inside slot cover of an available 32-bit PCI slot on the motherboard.
3. Install the FastTrak card into the open slot. Secure the bracket to the system's frame.
4. Fasten the FastTrak card bracket to the system case.



Step 3: Install the Disk Drives



Important

If you wish to include your current bootable Serial ATA drive using the Windows operating system as part of a bootable Mirrored (RAID 1) array on your FastTrak card, do NOT connect the hard drive to the FastTrak at this time. You MUST install the Windows driver software first onto this drive while it is still attached to your existing hard drive controller.

The FastTrak SX4100 RAID Controller card supports only Serial ATA hard drives. For optimal performance, install disk drives of the same model and capacity. The drives' matched performance allows the array to function better as a single drive.

If you are striping (RAID 0) for performance, use up to four new drives. If mirroring (RAID 1) for protection, you can use two new drives OR use an existing drive and a new drive (the new drive must be the same size or larger than the existing drive). If you are planning a RAID 5 array, use three or four new drives. If you are planning a RAID 10 array, use four new drives. JBOD configurations, you can use one to four drives.

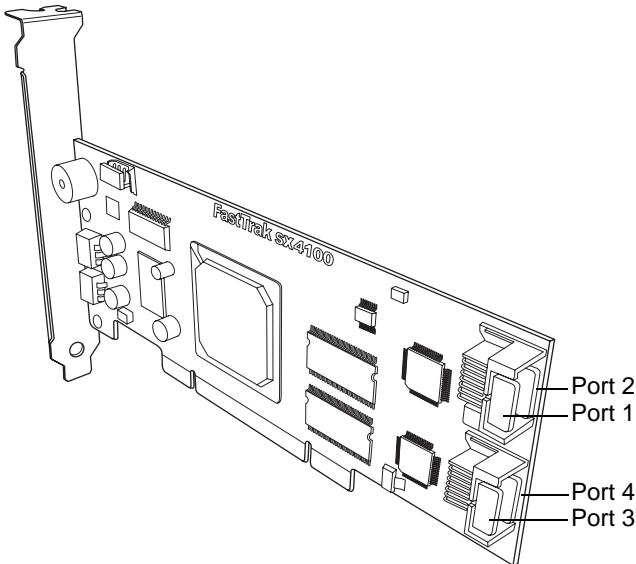
1. Install the hard drives into the hard drive bays of your system.



Caution

Use of removable hard drive enclosures other than Promise Technology's SuperSwap is not supported and may result in performance loss or other undesired results.

2. Attach one Serial ATA data cable to each hard drive. Then attach the other ends of the cables to the connectors Port 1 through Port 4, on the FastTrak card.



3. Attach the Y-cable power splitters to each of the hard drives.

You will now use the onboard FastBuild BIOS utility to create your first array using the attached drives. For an explanation of array options, see Chapter 3 of the *FastTrak SX4100 User Manual*.

Step 4: Create Your Logical Drive



Important

Even if you plan to use the Promise Array Management Utility to manage your array, you must still create your first array using the FastBuild Utility, as described here.

1. Boot your system. If this is the first time you have booted with the FastTrak card and drives installed, the Promise onboard BIOS will display the following screen.

```
FastTrak SX4100 (tm) BIOS Version 2.5.0.27
(c) 2004-2005 Promise Technology, Inc. All rights reserved.

Scanning drives...

No Array is defined...

Press <Ctrl-F> to enter FastBuild (tm) Utility...
```

2. Press Ctrl-F to display the FastTrak Utility Main Menu (below).

```
FastBuild Array Utility (tm) (c) 2004-2005 Promise Technology, Inc.
[ Main Menu ]

View Drive Assignments .....[ 1 ]
Define LD.....[ 2 ]
Delete LD.....[ 3 ]
Controller Configuration.....[ 4 ]

[ Keys Available ]
Press 1..4 to Select Option          [ESC]..Exit
```

3. Press 2 on the Main Menu screen to display the Define LD Menu (below).

```

FastBuild Array Utility (tm) (c) 2004-2005 Promise Technology, Inc.
[ Define LD Menu ]

LD No      RAID Mode   Total Drv   Capacity (MB)   Status
LD 1       -----    -----    -----    -----
LD 2       -----    -----    -----    -----
LD 3       -----    -----    -----    -----
LD 4       -----    -----    -----    -----

[ Keys Available ]
[↑] Up [↓] Down  [ESC] Exit  [Enter] Select  [Space] Change Boot Drive

```

4. Press the arrow keys to highlight the array number you wish to define and press Enter to select it. The Define Array Definition Menu will next appear (below).

```

FastBuild Array Utility (tm) (c) 2004-2005 Promise Technology, Inc.
[ Define LD Definition Menu ]

LD No      RAID Mode   Total Drv   Status
LD 1       RAID 5      3           Functional
GB Boundary: ON
Stripe Block: 64 KB   Initialize Array: ON   Cache Mode: ON

[ Drive Assignments ]

Channel ID   Drive Model           Capacity (MB)   Assignment
1:          SEAGATEST380023AS   80630          Y
2:          SEAGATEST380023AS   80630          Y
3:          SEAGATEST380023AS   80630          Y
4:          SEAGATEST380023AS   80630          N

[ Keys Available ]
[↑] Up [↓] Down  [Space] Change Option  [ESC] Exit  [Ctrl-Y] Save

```

5. Choose the RAID Level you want. In the Define Array Definition Menu section, press the Spacebar to cycle through array types:
- RAID 0 (Striping)
 - RAID 1 (Mirroring)
 - RAID 10 (Striping / Mirroring)
 - RAID 5 (Data / Parity Striping)
 - JBOD (Single Drive)
6. Press the arrow keys to move to the next option. Options depend on the RAID Level you selected.
- Stripe Block Size – The default 64KB is best for most applications.
 - Gigabyte Boundary – Allows use of slightly smaller replacement drives.
 - Fast Init – Erases the reserve sector of the drive. Promise recommends the user selects this option.

7. Press the arrow keys to move to Disk Assignments. Press the spacebar to toggle between N and Y for each available drive.

Assign the appropriate number of disk drives to your array. Refer to the chart below:

Level	Number of Drives
RAID 0	1, 2, 3 or 4
RAID 1	2 only
RAID 10	4 only
RAID 5	3 or 4
JBOD	1, 2, 3 or 4

A disk drive that is not assigned to an array can be set to function as a Hot Spare Drive.

8. Press Ctrl-Y to save your array configuration.
9. Press Esc to exit to the Main Menu. Press Esc again to exit the Utility.
10. Press Y to confirm the new array and restart the computer.

You have successfully created a new RAID array.



Important

You must partition and format your new array before you can use it. Partition and format arrays as you would any other fixed disk added to your computer system.

Step 5: Install Software Drivers

Drivers for the Windows operating systems are included on the driver diskette that came with your FastTrak Controller Card. Download the latest drivers from the Promise website at www.promise.com.

Windows systems usually recognize the FastTrak Controller, and perform the driver installation automatically after prompting you for the CD or diskette.

To install the FastTrak Controller manually, see Chapter 4 of the *FastTrak SX4100 User Manual* on the software CD.

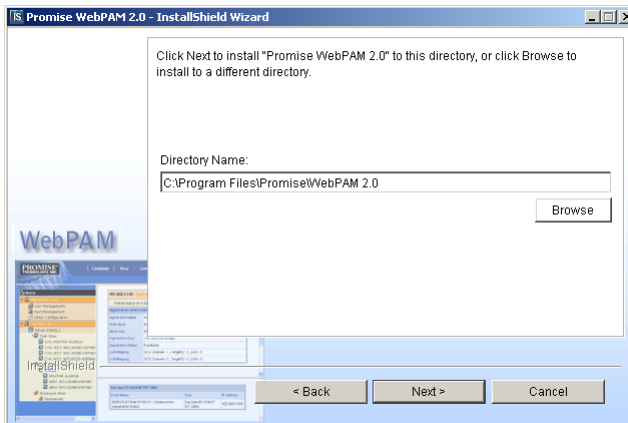
Drivers and installation instructions for other operating systems are available for download from the Promise website at www.promise.com.

Step 6: Install WebPAM

(Windows)

Web-based Promise Array Management (WebPAM) software allows you to remotely control your FastTrak SX4100 using the internet. You can perform tasks including creating and deleting arrays, synchronization The server with the FastTrak SX4100 must be on a network connected to the internet.

1. Find WebPAM on the software CD, and run WebPAM Installer.exe.
2. Check “I accept the terms of the license agreement” then click **OK** to accept the license. Do not install in the software if you do not accept the terms of the license.
3. Set a location to install WebPAM. You can type or browse for a path if you do not want to use the default location.



4. If you want to install Secure Sockets Layer support check *External SSL Security* then click next. If you choose not to install Secure Sockets Layer support now, you can change the setting later.
5. Check the information summary is correct then click *Install* to start installation.
6. Click **Finish** when installation is complete.
7. You can register WebPAM online. Registering entitles you to support from Promise Technology, Inc. Check *Register Your Product On-line* if you want to register.
8. Click **Finish** to exit WebPAM installer.

To run WebPAM:

1. From the Start menu, run Promise WebPAM 2.0.
2. Log in using the default user name **admin** and the default password **admin**. You can change the administration account password and create new user accounts in WebPAM. See the *WebPAM Online Help for more information*.

