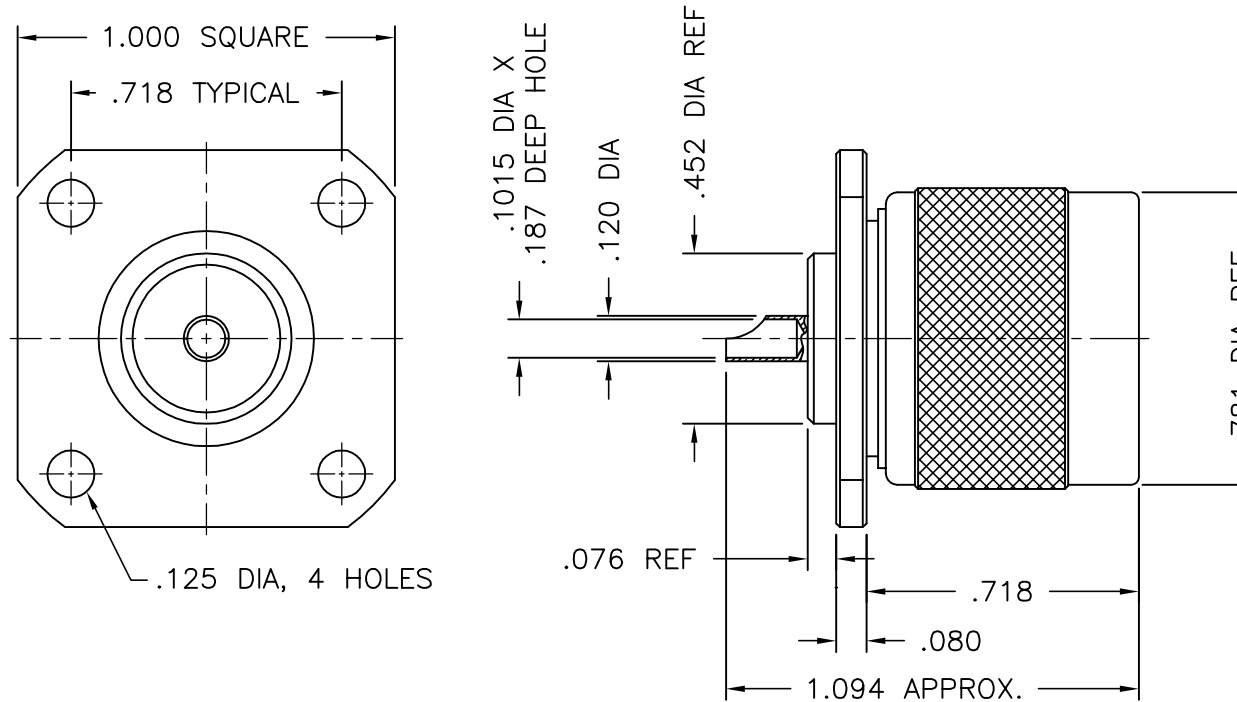




1123-000-N330-4



NOTES:

1. ASSEMBLED CONNECTOR INTERFACE IS DESIGNED IN ACCORDANCE WITH MIL-STD-348.
2. MATERIAL: BODY & COUPLING NUT- BRASS PER ASTM B16
LOCKING RING - PHOSPHOR BRONZE PER QQ-B-750
CONTACT - BRASS PER ASTM B16.
GASKET - SILICONE RUBBER PER ZZ-R-765
INSULATOR - TEFLON PER ASTM D1710
3. FINISHES: CONTACT - GOLD PLATE PER MIL-G-45024
ALL OTHER METAL PARTS - NICKEL PLATE PER QQ-N-290

UNLESS OTHERWISE SPECIFIED: TOLERANCES: 3 PLACES = ± 0.05 , 2 PLACES = ± 0.02 , ANGLES = $\pm 1/2^\circ$, SURFACE FINISH = 63	-	OUTLINE	1/21/03
	ALT.	REVISIONS	DATE

THESE DRAWINGS AND SPECIFICATIONS ARE THE PROPERTY OF DELTA ELECTRONICS MFG CORP. AND SHALL NOT BE REPRODUCED, OR COPIED OR USED AS THE BASIS FOR THE MANUFACTURE OR SALE OF APPARATUS OR DEVICES WITHOUT THEIR EXPRESS WRITTEN CONSENT.

DELTA ELECTRONICS MFG. CORP. Beverly, MA 01915

TITLE: 'N' PANEL MOUNTED JACK RECEPTACLE
WITH SOLDER POT CONTACT

Drawn by BJM 1/21/03	Scale 2/1	Ckd. by	Engr Appd	FILE NAME: 1123000N330-004T
----------------------------	--------------	---------	-----------	--------------------------------

CODE IDENT.-00795

1123-000-N330-4