

AUDIO VIDEO DATA PANEL CONNECTORS



The EH Series by Switchcraft® is a complete line of audio, video, and data connectors built into standard panel mount XLR housings. Custom combinations of EH Series connectors can be quickly loaded into any of our Q G® Series panels. Once mounted, connecting your equipment to the back of an EH Series connector is fast and easy. Most connectors are feedthru, which means standard cabling is simply plugged into the back of your gear, then plugged into the back of the EH Series connector. For those EH Series connectors that are not feedthru, solder lugs are clearly marked for simple, secure solder connections. All EH Series connectors are available individually bagged with mounting screws.

Q-G® Series panels come standard as 1RU (1x16), 1.5RU (1x16), or 2RU (2x16). 1RU and 1.5RU versions allow for any combination of up to 16 EH Series connectors to be loaded into the panel. The 2RU version can accommodate up to 32 EH Series connectors. Every Q G® Series panel includes quick change designation strips for easy connector identification.

Switchcraft's EH Series is the fastest and most versatile way to create a custom panel or wall plate perfectly suited to meet the needs of any studio, broadcast facility, or systems integrator. Customize your studio, make it easy to access your I/O's, and increase the lifespan of expensive pieces of equipment u

[Click to view the New Product Bulletin for the EH Series](#)

Broadcast Series

EH Connectors: USB, Firewire, SVHS, 9pin, and 15pin HD Dsub, 3.5mm Stereo, BNC, and RCA

E & EH Series Part Number Scheme

Connector Type	Part No. Prefix	Solder Contact	Feedthru	Black Finish	Bagged w/4-40 Mounting Screws
3.5MM Mono	EH35MMM	SC	N/A	B	PKG
3.5MM Stereo	EH35MMS	SC	N/A	B	PKG
SVHS	EHSVHS	N/A	2	B	PKG
PS/2 (AKA: mouse port / 6 Pin Din)	EH6MD	N/A	2	B	PKG
Firewire (EEE1394) Straight Wired	EHFW	N/A	2	B	PKG
Firewire EEE1394 Cross Wired	EHFWX	N/A	2	B	PKG
RCA	EHRCA	N/A	2	B	PKG
BNC	EBNC	SC	2	B	PKG
~ BNC (Recessed Front)	EBNC2R	N/A	---	B	PKG
BNC to RCA	EBNCRCA	---	---	B	PKG
RCA to BNC	EHRCABNC	---	---	B	PKG
USB A to B	EHUSBAB	---	---	B	PKG
USB B to A	EHUSBBA	---	---	B	PKG
9 Pin DSUB Male to Male	EHDB9MM	---	---	B	---
+ 9 Pin DSUB Male to Female	EHDB9MF	---	---	B	---
9 Pin DSUB Female to Female	EHDB9FF	---	---	B	---
15 Pin HD DSUB Male to Male	EHHD15MM	---	---	B	---
+ 15 Pin HD DSUB Male to Female	EHHD15MF	---	---	B	---
15 Pin HD DSUB Female to Female	EHHD15FF	---	---	B	---

+ Reversible gender.
~ Connector is flush with the face of the housing.
If no "B" suffix, all connectors come with nickel housing.
If no "PKG" suffix, all connectors come bulk.

Additional E & EH Series Connectors and Components



[Click here for full line of E Series XLRs](#)

Connector Type XLRs	Part No. Prefix	Solder Contact	Black Finish	Gold Pin	Bagged w/4-40 Mounting Screws
XLR Female 3 Pin	E3F	SC	B	AU	PKG
XLR Male 3 Pin	E3M	SC	B	AU	PKG
XLR Female 4 Pin	E4F	SC	B	AU	PKG
XLR Male 4 Pin	E4M	SC	B	AU	PKG



[Click here for 1/4" Jacks](#)

Connector Type 1/4" Jacks	Part No. (Silver Finish)	Part No. (Black Finish)
1/4" Mono Locking Jack	E111L	E111BL
1/4" Stereo Locking Jack	E112BL	E112BLB

Accessory Blank Cover	Part Number
Cover for E & EH Series (Black anodized aluminum) Comes with 4-40 Screws	ECPPKG (Black Only)

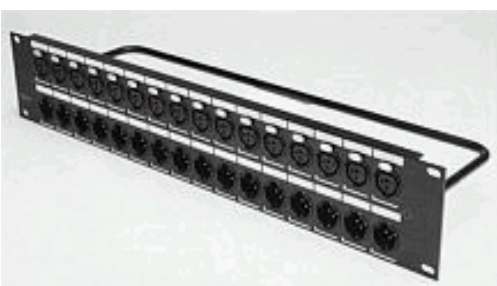
Accessory Empty EH Kit Housing	Finish	Part No.
For BPJJ0 Series RCA Bulkheads	Nickel	EH1PKG
(Comes with 4-40 Screws)	Black	EHB1PKG

Empty EH Rack Panels	Rack Height	No. of Knockouts	Tapped 4-40 Holes
QGPK1B	1RU	1 X 16	NO
QGPK1B440	1RU	1 x 16	YES
QGPK2B	1.5RU	1 X 16	NO
QGPK2B440	1.5RU	1 X 16	YES
QGPK3B	2RU	2 X 16	NO
QGPK3B440	2RU	2 X 16	YES
HPCPK1B	1RU	1 X 12	NO
HPCPK1B440	1RU	1 X 12	YES
HPCPK3B	2RU	2 X 12	NO
HPCPK3B440	2RU	2 X 12	YES

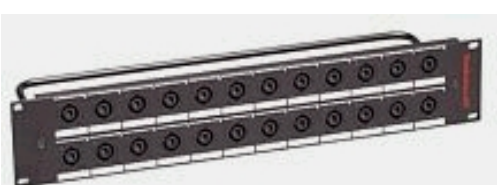
Note: All panels come with cable tie bar



Unloaded 1 RU EH Rack Panel



[Click here for loaded XLR Panels](#)



[Click here for loaded HPC panels](#)