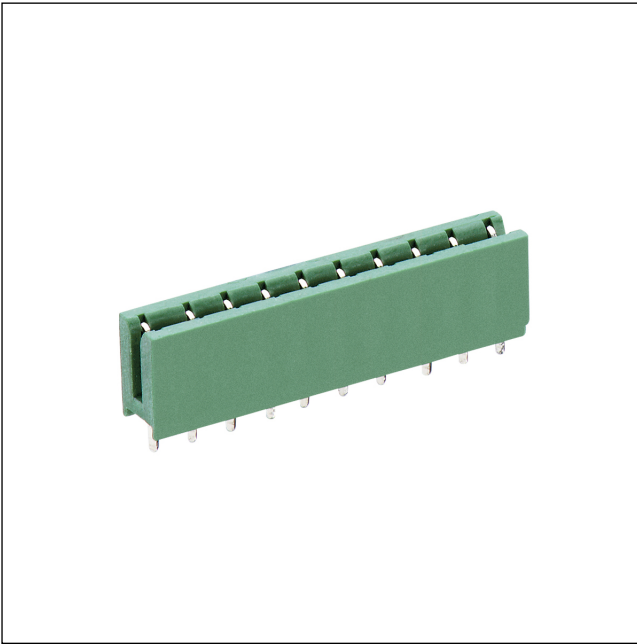


51

5 R

Direct connectors for insert cards, pitch 2.5/2.54/5.0/ 5.08 mm

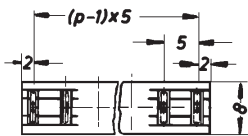
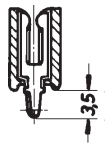
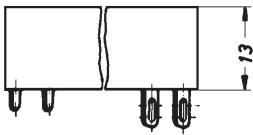


Socket board for direct mating, with solder pins

State: Phasing out

51

5 R



Environmental conditions

Temperature range -25 °C/+100 °C

Materials

Insulating body PPO
Contact spring CuSn, pre-nickel and tin-plated

Mechanical data

Mating with Leiterplatte 1,5 ± 0,14 mm

Electrical data (at T_{amb} 20 °C)

Contact resistance ≤ 3 mΩ
Rated current 5 A
Rated voltage 250 V AC
Rated impulse voltage ≥ 3,0 kV

Associated products

Accessories

☞ F ☞ FD ☞ FF
☞ FL ☞ SP 1

Designation	Pole Number	PU (Pieces)	MDQ (Pieces)
5 R 03	3	200	#N/A
5 R 04	4	200	#N/A
5 R 05	5	200	#N/A
5 R 06	6	200	#N/A
5 R 07	7	200	#N/A
5 R 08	8	200	#N/A
5 R 09	9	200	#N/A
5 R 10	10	200	#N/A
5 R 11	11	200	#N/A
5 R 12	12	200	#N/A
5 R 13	13	200	#N/A
5 R 14	14	200	5000
5 R 15	15	200	#N/A
5 R 16	16	200	#N/A
5 R 17	17	200	#N/A
5 R 18	18	200	#N/A
5 R 19	19	200	#N/A
5 R 20	20	200	#N/A
5 R 21	21	200	#N/A
5 R 22	22	200	#N/A
5 R 23	23	200	#N/A
5 R 24	24	200	#N/A
5 R 25	25	200	#N/A
5 R 26	26	200	#N/A
5 R 27	27	200	#N/A
5 R 28	28	200	#N/A
5 R 29	29	200	#N/A
5 R 30	30	200	#N/A
5 R 31	31	200	#N/A
5 R 32	32	200	#N/A
5 R 33	33	200	#N/A

Packaging:

in bulk, in a cardboard box