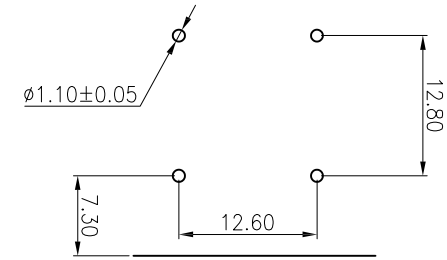
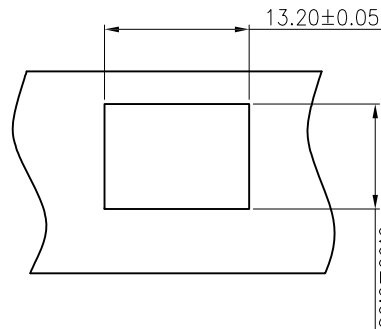
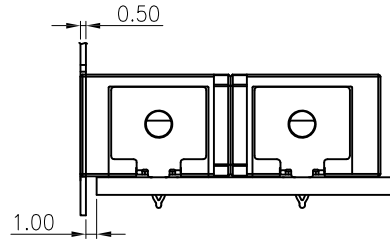
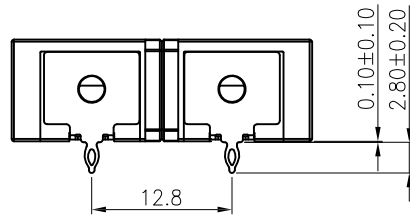
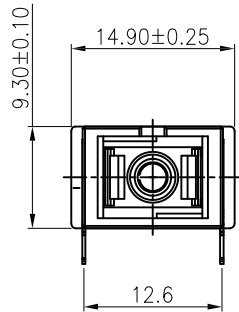
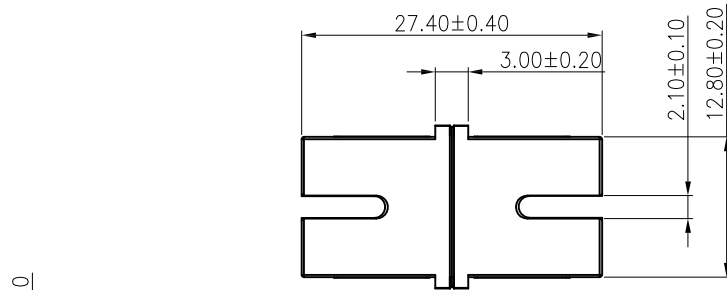
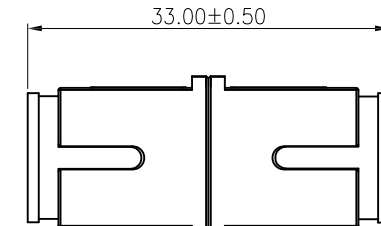


APPROVED: _____
 DATE: _____ TITLE: _____

Rev	AWO #	Description	Date	Appr
-		RELEASED	9/8/20	



RECOMMENDED PCB LAYOUT



WITH DUST CAP

SPECIFICATIONS:

Material:

Housing: PBT, rated UL 94V-0, Color: See Chart

Cap: PBT, rated UL 94V-0, Color: Black

Sleeve: Zirconia Ceramic

Electrical:

Standards of IEC, EIA/TIA, Telcordia

Insertion loss: 0.2dB max

Interchangeability: 0.2dB max

Mechanism durability (500 cycles min): 0.2dB max

Temperature Rating:

Operating temperature: -40°C to +75°C

Environmental:

Lead free, RoHS compliant.



OPSA1BNPC1N1	SC/APC, TWO TYPE DUST CAP	7737C Green	PBT Black
OPSB1BNPC1N1	SC/PC, TWO TYPE DUST CAP	2184C Blue	PBT Black
PART NUMBER	DESCRIPTION	Housing&Insert color	Cap Color

UNLESS OTHERWISE SPECIFIED
 ALL DIMENSIONS ARE MILLIMETERS
 TOLERANCES: EXCEPT AS NOTED
 MM ANGLE
 X. ± 0.35 X.* ± 2°
 .X ± 0.30 .X* ± 1°
 .XX ± 0.25 .XX* ± 0.5°
 .XXX ± 0.15 .XXX* ± 0.5°

APPROVALS		DATE
DRAWN	LH	9/7/20
CHECKED	JL	9/7/20
APPROVED		

ADAM
TECH
 INTERCONNECTS

909 Rahway Avenue,
 Union, NJ 07083
 Phone: 908-687-5000
 Fax: 908-687-5710

TITLE
 SC TYPE ADAPTER, APC&PC, 1 PORTS, SHORT-EARS,
 WITH SC TWO TYPE DUST CAP, WITH PRESS FIT PIN

SIZE X	PART NO. OPXS1BNPC1N1	REV. -
REF: S00005C	SCALE: NTS	SHEET 1 OF 1