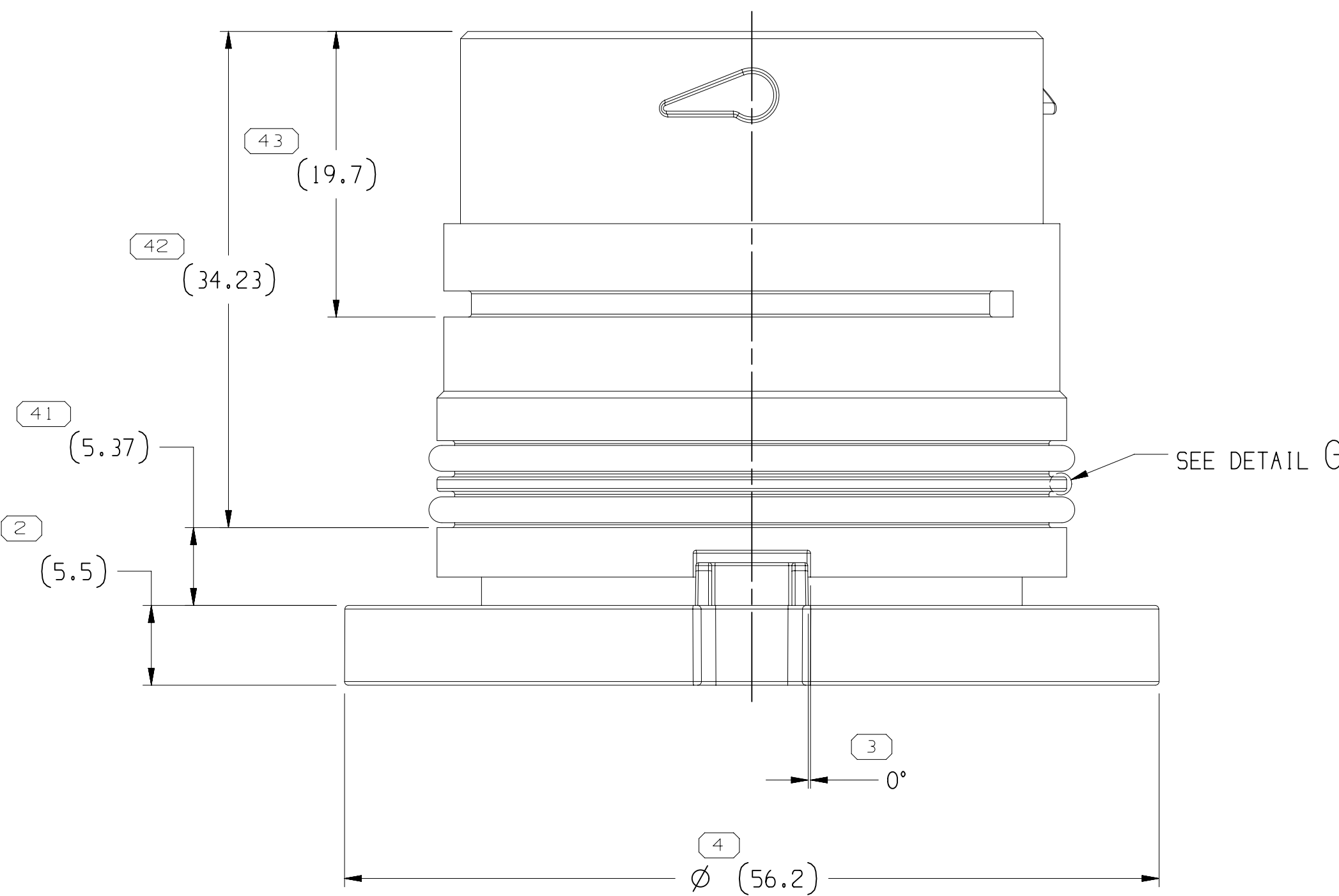
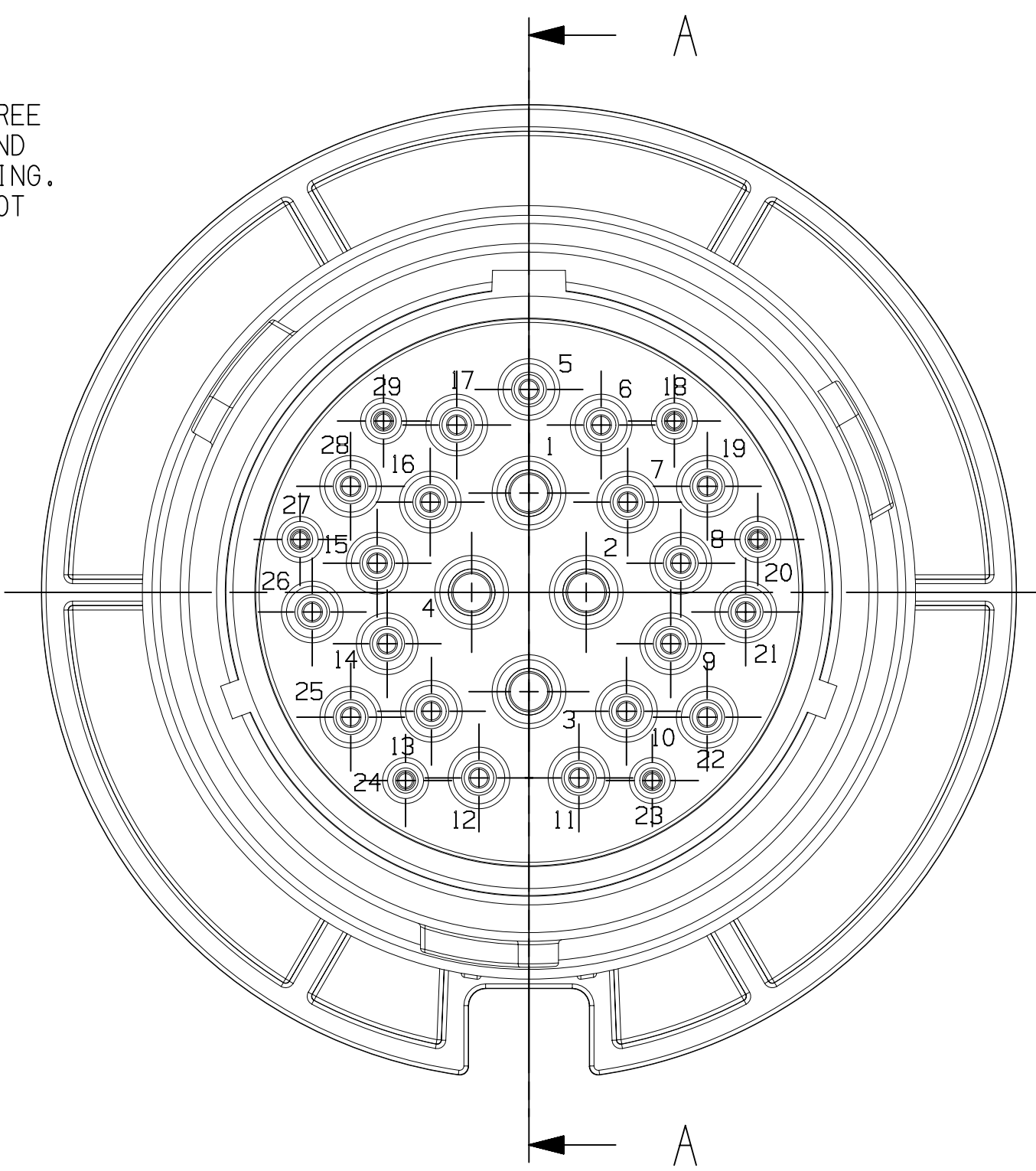
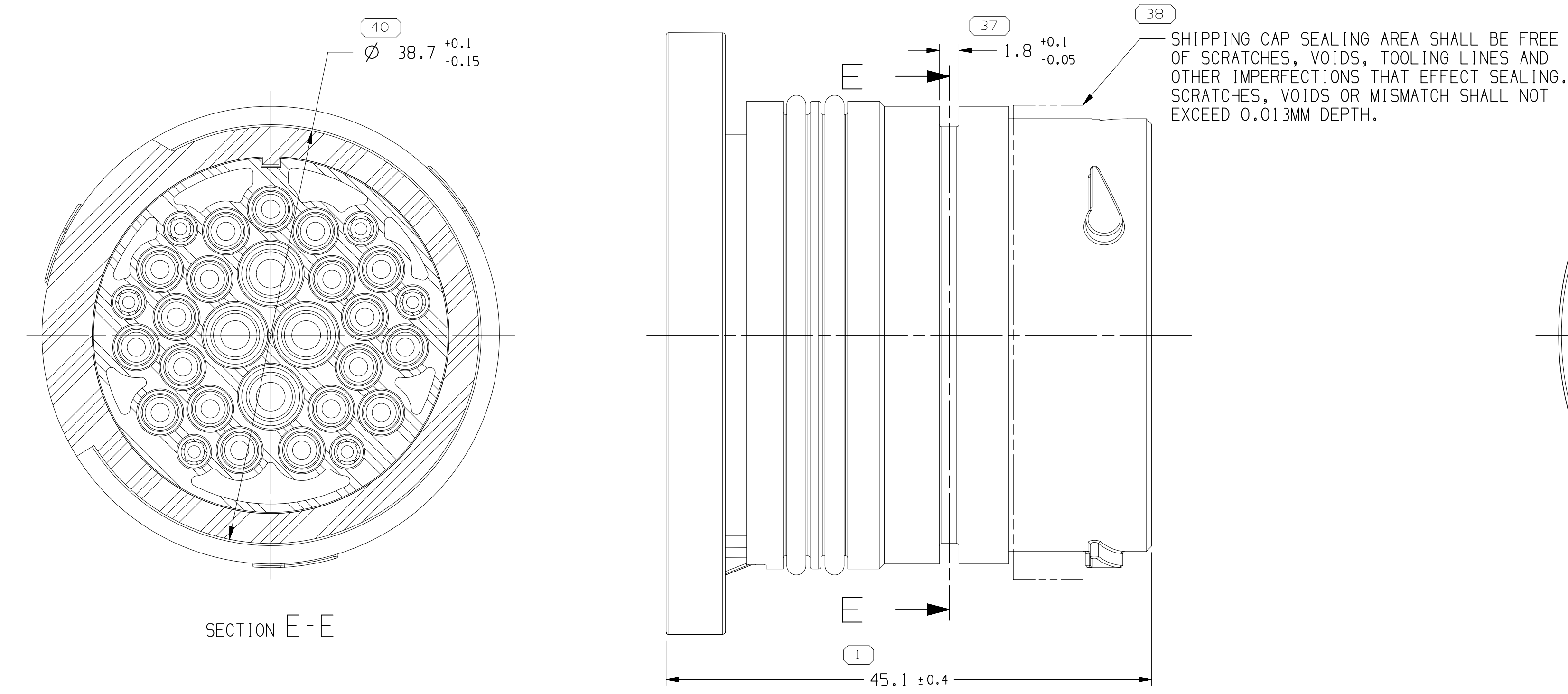
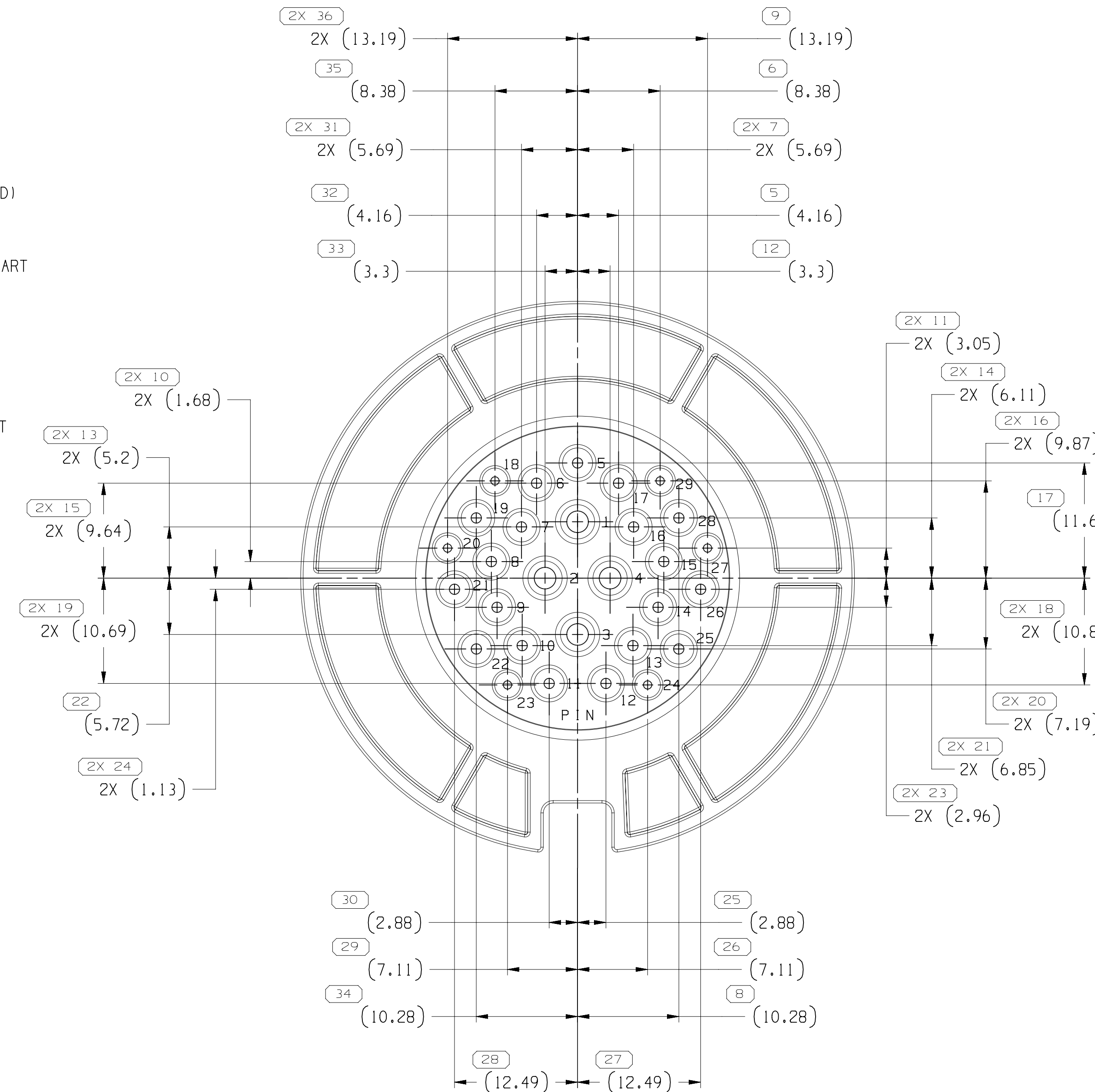
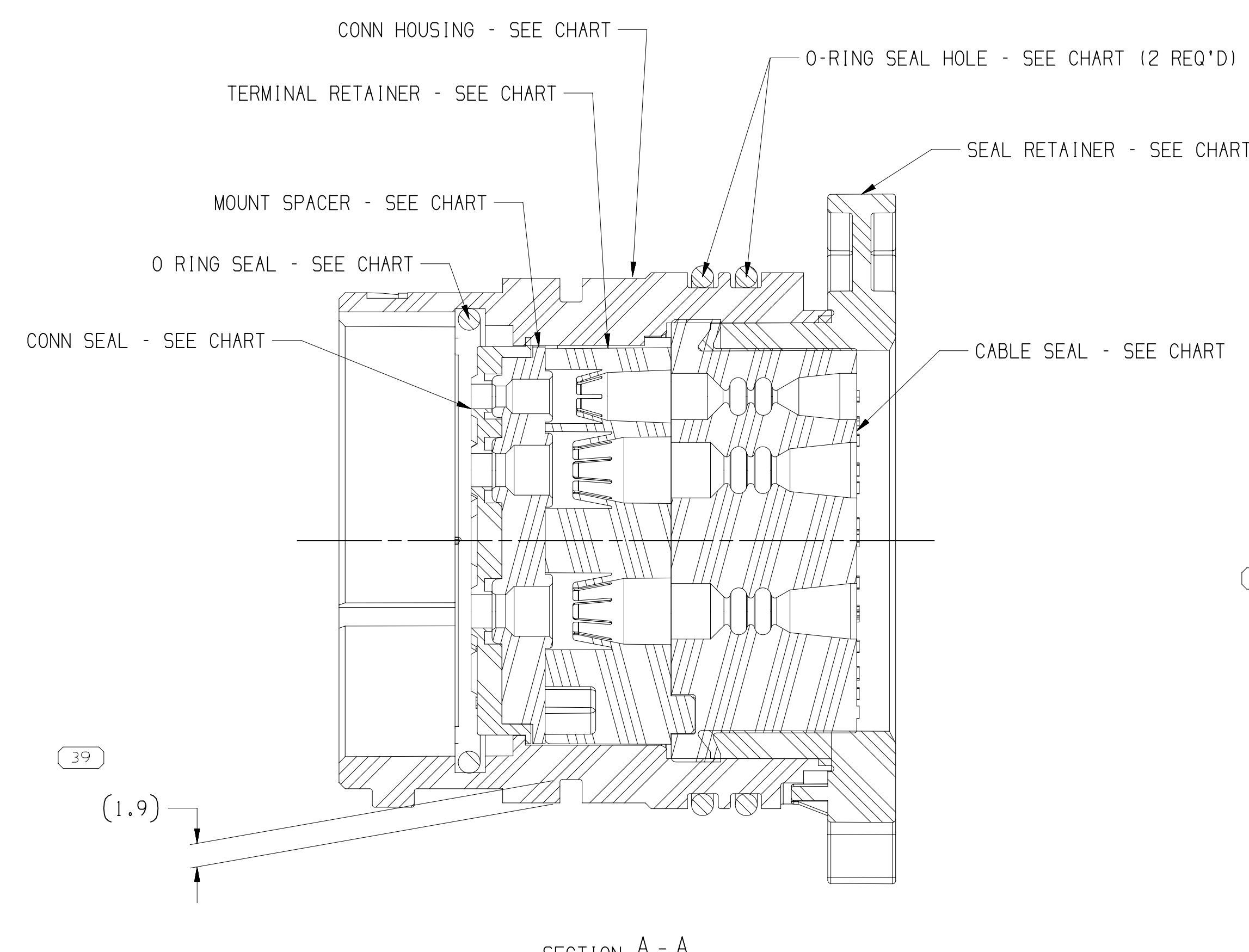


MOUNTING HOLE INFORMATION
SCALE 2:1



2X 44
2X R 0.2

DETAIL G
SCALE 25:1



- ## NOTES

1. UNLESS OTHERWISE SPECIFIED AND/OR INDICATED:


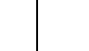
DIMENSIONS ARE TO FACE OF VIEW SHOWN AND AUTOMATICALLY ROUNDED BY COMPUTER FOR INSPECTION (SEE MATH MODEL FOR PRECISE DIMENSIONS). FOR ALL OTHER DIMENSIONS NOT SHOWN BUT REQUIRED FOR TOOL BUILD, SEE MATH MODEL FOR PRECISE TOOL PATH DATA.


2. THIS PRODUCT IS NOT CATEGORIZED AS AN APPARATUS ITEM, MINOR IMPERFECTIONS INCLUDING, BUT NOT LIMITED TO, FLOW MARKS, COLOR BANDS, GATE WEAR, OR PART FLASH, THAT DO NOT AFFECT THE FIT, FORM, OR FUNCTION OF THE PART ARE PERMISSIBLE PER EAMP-4.3.CS.01.EN

3. THIS PART IS NOT CONTROLLED FOR AUTOMATIC FEEDING.
4. CAVITIES TO ACCEPT THE FOLLOWING TERMINALS OR EQUIVALENT:

HES 1,0 - 13654423
HES 1,6 - 13663715
HES 2,4 - 13781056
5. FOR APPLICATION DATA SEE THE APPLICATION DRAWING.
6. SEAL RETAINER PULL RETENTION FORCE MUST EXCEED 890 N.
7. SHIPPING CAP 13668988 OR EQUIVALENT CAN BE ADDED AFTER HARNESS BUILT TO PROTECT PINS & PROTECT AGAINST CONTAMINATION.
8. FOR ASSEMBLY CONSTRUCTION FORCES REDUCTION IN CABLE SEAL, ADD M6504 HURT QUALITY PTFE.
9. TORQUE MATING & UN-MATING NOT TO EXCEED 3,5NM.

LEVELS ARE ESTABLISHED										
DIMENSIONAL RANGE (MM)		CHART E								
FROM	TO	> 0 20	> 20 30	> 30 70	> 70 100	> 100 150	> 150 200	> 200 250	> 250 300	> 300 400
TOLERANCE UNLESS OTHERWISE SPECIFIED										
		+0.15	+0.2	+0.3	+0.4	+0.5	+0.6	+0.8	+1	+1.2
DIMENSIONAL RANGE (MM)										

THIS DRAWING, HEREIN, PROVIDES A PART NUMBER IDENTIFICATION. PHYSICAL PARTS ARE NOT AVAILABLE FOR SALE.	
PART NUMBERS THAT DO NOT HAVE A LINE PREFIX, INDICATE THAT PHYSICAL PARTS ARE AVAILABLE FOR ORDERING.	
PHYSICAL PARTS SALES TO ASSURE AVAILABILITY.	
<h1 style="margin: 0;">CAPTIVE</h1> <h2 style="margin: 0;">CONNECTION SYSTEMS</h2>	
COPYRIGHT 2010 APPLIED, ALL RIGHTS RESERVED.	
THE INFORMATION ON THE PROPERTY OF APPLIED AND CAPTIVE APPLIED (OR CONFIDENTIAL) IS UNCLASSIFIED AND NOT CONTROLLED BY APPLIED OR CAPTIVE APPLIED. IT IS THE PROPERTY OF APPLIED AND CAPTIVE APPLIED AS COMMUNICATION OF ANY CONTENT OR DISCLOSURE, WITHOUT EXPRESS AUTHORIZATION, IS PROHIBITED.	
TITLE <div style="text-align: center; border: 1px solid black; padding: 5px; margin: 5px 0;"> PART DRAWING </div>	DATE
VOLUME _____ OF _____ SHEET C	DRAWING NO.
(UNLESS OTHERWISE SPECIFIED)	
THIS DOCUMENT IS IN ACCORDANCE WITH ASME Y14.1-1994 AND Y14.100-1995. THIS DOCUMENT IS THE PROPERTY OF APPLIED TOWLING AND EQUIPMENT. IT IS UNCLASSIFIED AND NOT CONTROLLED BY APPLIED TOWLING AND EQUIPMENT. IT IS THE PROPERTY OF APPLIED TOWLING AND EQUIPMENT AS COMMUNICATION OF ANY CONTENT OR DISCLOSURE, WITHOUT EXPRESS AUTHORIZATION, IS PROHIBITED.	
ALL DIMENSIONS ARE IN MILLIMETERS	
DRAWING NAME:	
ASM CONN 29 M HWS 1.0 1.6 2.4 5L	
DRAWING NUMBER:	
<div style="text-align: center; font-size: 2em; font-weight: bold;">35490841</div>	
THIRD ANGLE PROJECTION 	DO NOT SCALE USE DATA 

SYMBOL DEFINITION		
A DIMENSION WITHOUT AN INSPECTION REPORT SYMBOL  DOES NOT REQUIRE INSPECTION. IT MAY BE CONTROLLED ON THE INDIVIDUAL COMPONENT DRAWING.	TOTAL NO OF INSPECTIONS REQUIRED	60
	LAST NO. USED	44

MISSING SYMBOLS		NO MISSING SYMBOL NUMBER		DATE	REV	STATUS	ZONE	REVISION HISTORY		AUTH	REV	APPROV	DATE
140C20	R	01	AA	-	-	-	-	WAS #447728, REV'D AND RELEASED PART RELACATED		552721	CG	CGO	DM
02N020	R	01	AA	-	-	-	-	DRAWING "WHIPPING CAP SEALING AREA" AND SEAL CONN DISKET WAS 1369718		552872	CGO	CGO	DM
24MR2	R	02	-	-	-	-	-	UPDATED CONN HOUSING & SEAL RETAINER TO LATEST REVISION		553659	LD	CGO	DM
220C21	R	02	AA	-	-	-	-	Ø 41.8 ± 0.025 WAS Ø 143.8) AND ADDED ASSEMBLY CONSTRUCTION NOTE		555646	LD	CGO	DM
09N021	R	02	AB	-	-	-	-	UPDATED PART AVAILABILITY		555815	AGC	AGC	DM
16FE22	R	03	-	-	-	-	-	ADDED DIMS (1.91, Ø 38.7 ± 0.1/-0.15 AND TORQUE NOTE		556686	0LS	JAM	DM
20JN22	R	03	AA	-	-	-	-	ADDED DIMS #41-44		557802	LD	JAM	DM
20JA23	R	04	-	-	-	-	-	UPDATED CONN HOUSING TO LATEST REVISION		559360	0LS	JAM	DM

