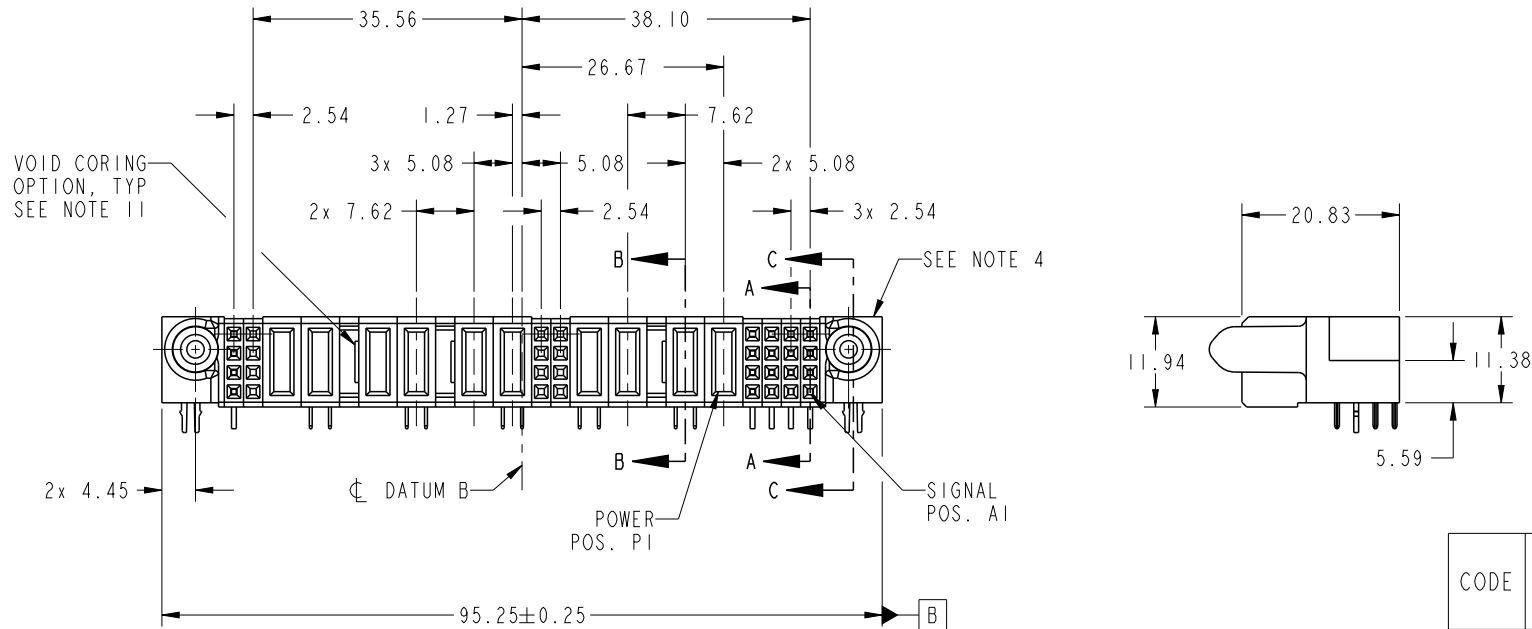


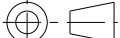





Copyright FCI.

PRODUCT NO.	ROWS	1										2										3										4									
		SIG		POWER								SIG		POWER								SIGNAL																			
		E2	8	7	P10	P9	P8	P7	P6	P5	6	5	P4	P3	P2	P1	4	3	2	1	E1																				
51915-453-- NOTE 3	D C B A		H	X							X	X					H	H	H	H																					
			G	X							X	X					G	G	G	G																					
			F	X		X	PC				X	X					F	F	F	F																					
			E	X							X	X					E	E	E	E																					



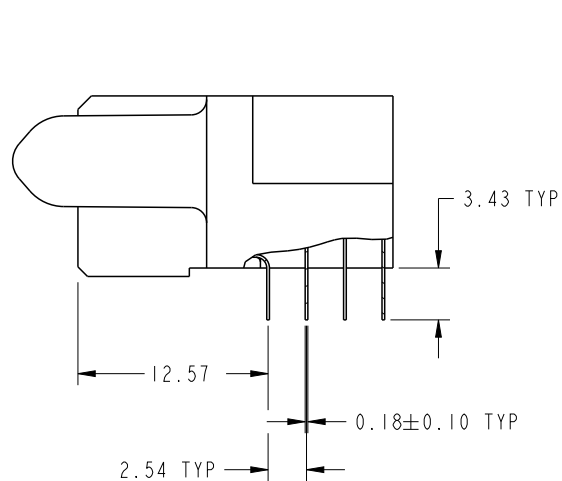
CODE	DIM "M" MATING LENGTH	CONTACT TYPE
PA	[1.07]	POWER
PC	[2.34]	POWER
H	[N/A]	SIGNAL
G	[N/A]	SIGNAL
F	[N/A]	SIGNAL
E	[N/A]	SIGNAL
HA	[N/A]	HOLD-DOWN
X	OMITTED	

spec ref -				dr	De-Ming Lu	2014/07/19	projection 		size	A4	scale	1:1
tolerance std SEE NOTES	TOLERANCES UNLESS OTHERWISE SPECIFIED			eng	De-Ming Lu	2014/09/27			ecn no	-		
				chr	-	-			product family	PwrBlade	rel level	Released
				appr	Pei-Ming Zheng	2014/09/27						
surface 	linear	0.X	±0.50		title 16S + 4P + 8S + 6P + 8S R/A SOLDER RECEPTACLE				dwg no	51915-453		rev A
		0.XX	±0.25									
		0.XXX	±0.10									
		angular	0°	±2°	www.fci.com	cat. no.			*	Product - Customer Drw		sheet 1 of 4

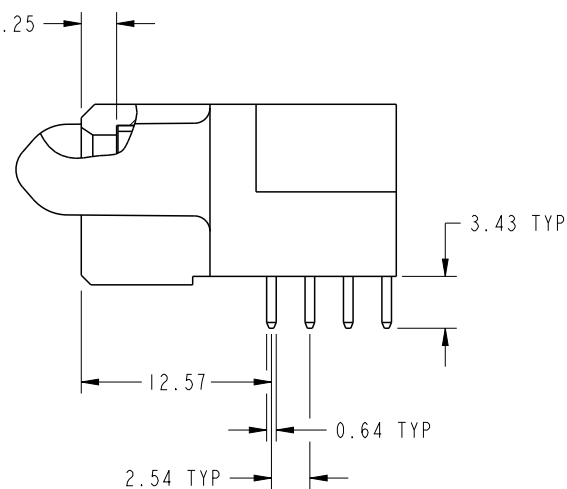
PrintE File - REV C - 2009-06-09

PRODUCT NUMBER

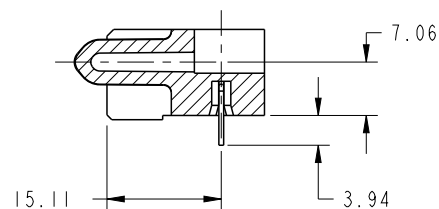
51915-453__
NOTE 3



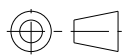
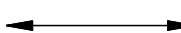
BROKEN-OUT SECTION A-A
SCALE 2:1



BROKEN-OUT SECTION B-B
SCALE 2:1

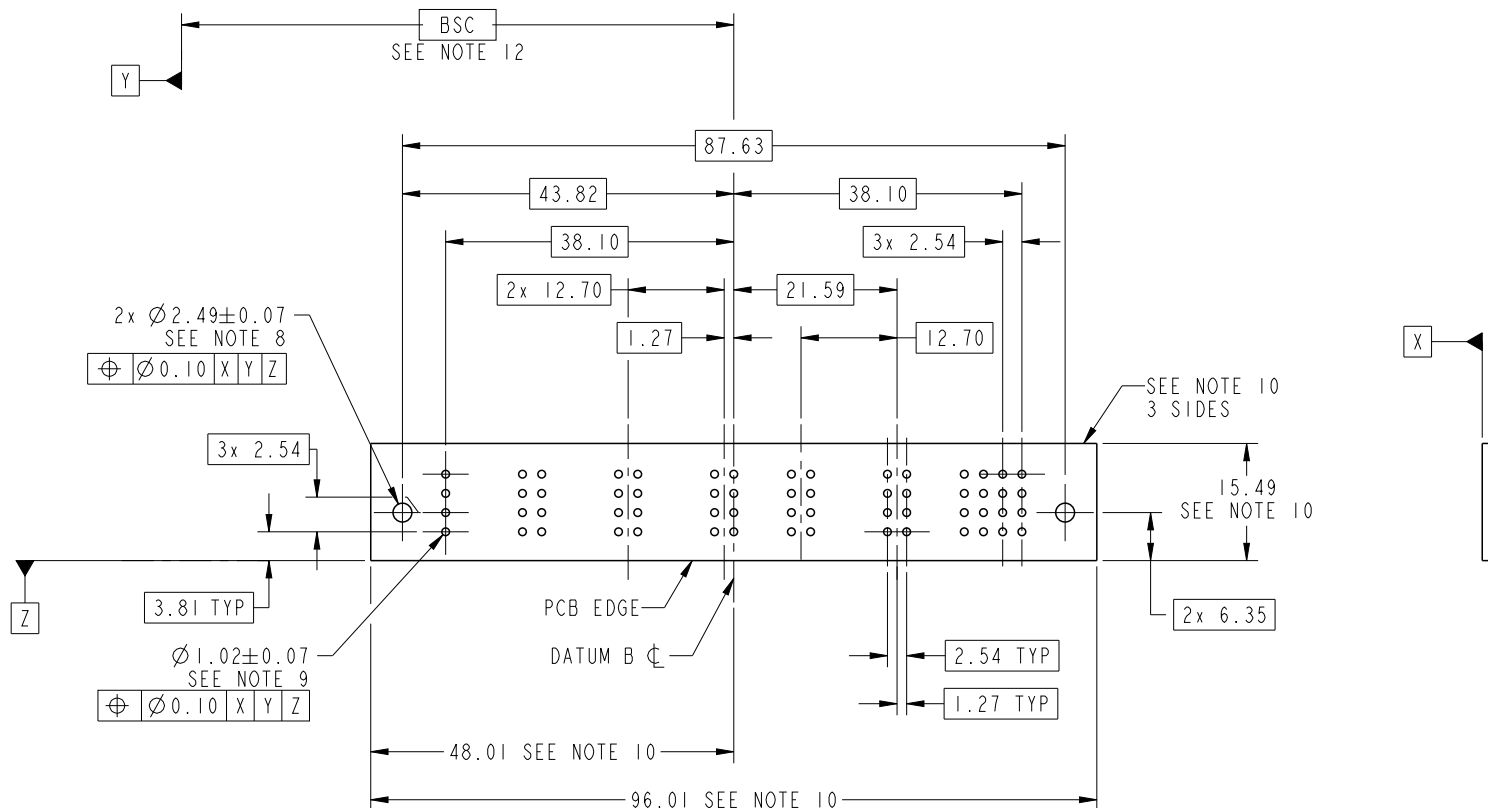


SECTION C-C

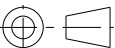


dr	De-Ming Lu	2014/07/19	<div>projection</div> <div></div>	<div>MM</div> <div></div>	size	A4	scale	1:1		
eng	De-Ming Lu	2014/09/27			ecn no			-		
chr	-	-			rel level			Released		
appr	Pei-Ming Zheng	2014/09/27	product family		PwrBlade					
<div>FCI</div>		title			16S + 4P + 8S + 6P + 8S			dwg no		
		R/A SOLDER RECEPTACLE			51915-453			rev		
								A		
www.fci.com		cat. no.		*	Product - Customer Drw			sheet 2 of 4		

PRODUCT NUMBER

51915-453--
NOTE 3



RECOMMENDED PCB LAYOUT

dr	De-Ming Lu	2014/07/19	<div>projection</div> <div></div>	<div>MM</div> <div></div>	size	A4	scale	1:1					
eng	De-Ming Lu	2014/09/27			ecn no								
chr	-	-			rel level				Released				
appr	Pei-Ming Zheng	2014/09/27	product family						PwrBlade				
<div></div>		title			16S + 4P + 8S + 6P + 8S			dwg no	51915-453			rev	A
www.fci.com		cat. no.		*	Product - Customer Drw						sheet 3 of 4		



Copyright FCI.

PRODUCT NUMBER
51915-453__
NOTE 3

NOTES:

1. DIMENSIONS AND TOLERANCES ARE IN ACCORDANCE WITH
ASME Y14.5M, 1994 UNLESS OTHERWISE SPECIFIED.

CONNECTOR NOTES:

- 2. HOUSING MATERIAL: UL 94 V-0 GLASS FILLED HIGH-TEMP THERMOPLASTIC
POWER CONTACT MATERIAL: COPPER ALLOY
SIGNAL PIN MATERIAL: COPPER ALLOY
- 3. SEE ITEM 5 & 6 IN PRINT 10064183 FOR PLATING SPEC OF 51915-453 AND 51915-453LF RESPECTIVELY.

4. MANUFACTURER'S NAME, DATE CODE AND OPTIONAL P/N TO APPEAR ON
THIS SURFACE. THE MARK CAN BE OMITTED IF THERE IS NOT ENOUGH SPACE
ON THIS SURFACE.

5. PRODUCT SPECIFICATION GS-12-149.
APPLICATION SPECIFICATION BUS-20-067.

6. PACKAGED IN TRAYS.

PCB NOTES:

7. ALL HOLE DIAMETERS ARE FINISHED HOLE SIZE.

8. MOUNTING HOLES, WHERE APPLICABLE, ARE UNPLATED.

9. $\varnothing 1.151 \pm 0.025$ DRILLED HOLES PLATED WITH
0.008 MIN SnPb OR Sn OVER 0.03
TO 0.08 Cu PLATING TO ACHIEVE
 $\varnothing 1.02 \pm .07$ HOLE.

10. CONNECTOR KEEP-OUT ZONE.

11. THE VOID CORING IN BETWEEN POWER MODULES, SIGNAL
MODULES AND END MODULES ARE OPTIONAL AND THE SHAPE
MAY BE DIFFERENT FOR OPTIMIZE THE MOLDING PROCESS. THE
VOID CORING WILL NOT EFFECT TO PRODUCT FUNCTION.

12. DATUM AND BASIC DIMENIONS ARE ESTABLISHED BY CUSTOMER.

dr	De-Ming Lu	2014/07/19	<div>projection</div>	<div>MM</div>	size	A4	scale	1:1
eng	De-Ming Lu	2014/09/27			ecn no	-		
chr	-	-						
appr	Pei-Ming Zheng	2014/09/27	product family		PwrBlade	rel level		Released
	title				16S + 4P + 8S + 6P + 8S		dwg no	
	R/A SOLDER RECEPTACLE				51915-453		rev	
							A	
www.fci.com		cat. no.		*	Product - Customer Drw			sheet 4 of 4