

## Technical Data

### Material:

Contact Material: Brass  
Contact plating: Au or Sn Over 50µ" Ni  
Insulator Material: Black Polyester UL94V-0  
Standard: PA6T +30%G.F

### Electrical:

Current rating: 1.0Amps/contact max.  
Contact resistance: ≤20mΩ/contact  
Insulation resistance: ≥1000MΩ at V=100V  
Withstanding Voltage: 500V AC/minute

### Mechanical:

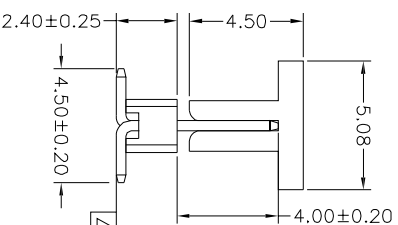
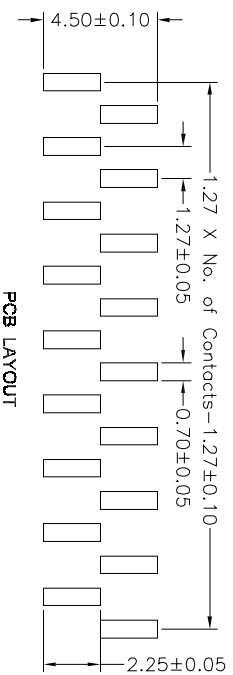
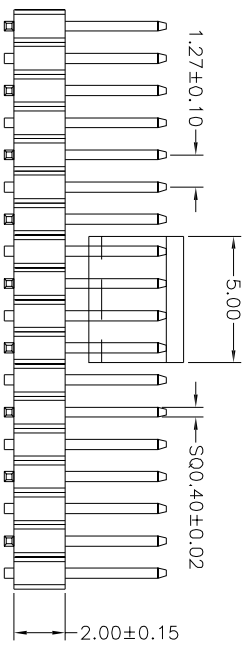
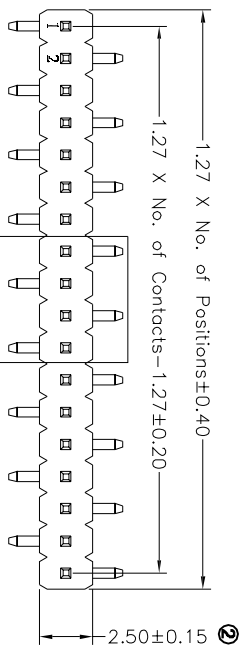
Mechanical life cycle: min.200  
Operating temperatures: Gold Plated: -55° C to +105° C  
Tin plated: -40° C to +105° C  
Soldering temperature: +260° C, 10s max

PACKING: REEL

### ③Ordercode

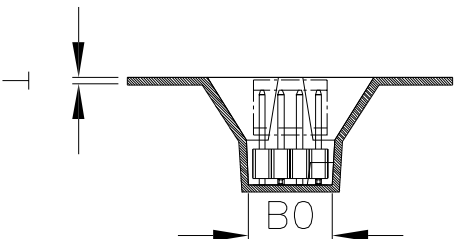
A-SL127-EG-x XX M R 1: Tape&Reel+Cap:1\*2P~1\*25P  
A-SL127-EG-x XX M P 1: Tube:1\*5P~1\*40P

Contact Plating  
Gold Plated  
27µin  
No. of Contacts



0.12

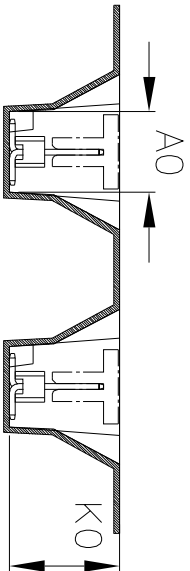
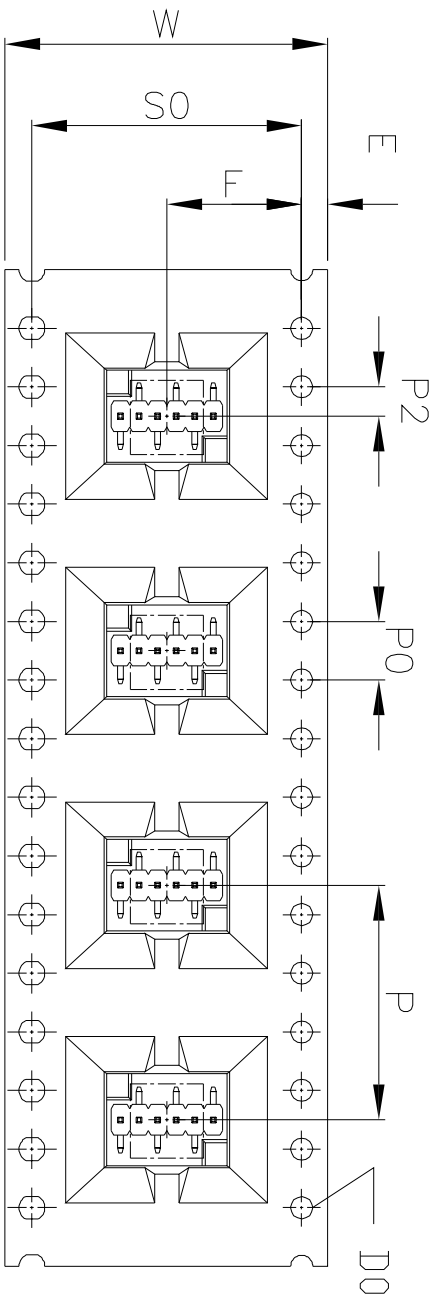
**RoHS compliant**  
unit:mm

**Customer-No.**

**ASSMANN**  
WSV components

# RoHS compliant



- 1.10 sprocket hole pitch cumulative tolerance  $\pm 0.2\text{mm}$ .
2. Carrier camber not to exceed  $1\text{mm}$  in  $250\text{mm}$ .
3. A0 and B0 measured on a plane  $0.3\text{mm}$  above the bottom of the pocket.
4. K0 measured from a plane on the inside bottom of the nocket to the too surface of the carrier.
5. All dimension meet ELA-481-D requirements.
6. Material: Black Conductive Polystyrene Alloy.
7. Packing length per 22" reel:  $16.5\text{ Meters}$ .
8. Component load per 13" reel:  $300\text{pcs}/5.5\text{ Meters}$ .

A-SL127-EG-G06MR1

W	22.00 $\pm$ 0.30	P	16.00 $\pm$ 0.10	A0	5.50 $\pm$ 0.15	B0	15.45 $\pm$ 0.15
S0	18.40 $\pm$ 0.10	P0	4.00 $\pm$ 0.10	A1		B1	
E	1.75 $\pm$ 0.10	P2	2.00 $\pm$ 0.10	A2		B2	
F	9.20 $\pm$ 0.10	D0	$\phi 1.50 \pm 0.10$	K0	7.50 $\pm$ 0.15		
T	0.50 $\pm$ 0.05	D1		K1			

Customer-No.

Date

Name

Drawn

Ray

Approved

Winnie

Drawing-No.

ASS 5957 CO

Replace

Sheet  
3 of 3

**ASSMANN**  
WSW/ components

RoHS compliant  
unit:mm

1

2

3

4

5

6

7

SV3356