

# PRODUCT DATASHEET

## Tina series

last update 13/11/2012

**Product number FA11208\_TINA-RS**

Family	Tina	FWHM	11 degrees
Type	Assembly	Efficiency	90 %
LED	Oslon SSL 80	cd/Im	14.300
Color	Black	Gerber File	Available
Diameter	16.1 mm		
Height	9.5 mm		
Style	Round		
Optic Material	PMMA		
Holder Material	-		
Fastening	["tape", "pin"]		
Status	Production ready		

**Product number FA11205\_TINA-D**

Family	Tina	FWHM	12 degrees
Type	Assembly	Efficiency	89 %
LED	Oslon SSL 80	cd/Im	10.100
Color	Black	Gerber File	Available
Diameter	16.1 mm		
Height	9.5 mm		
Style	Round		
Optic Material	PMMA		
Holder Material	-		
Fastening	["tape", "pin"]		
Status	Production ready		

**Product number FA11206\_TINA-M**

Family	Tina	FWHM	24 degrees
Type	Assembly	Efficiency	83 %
LED	Oslon SSL 80	cd/Im	2.290
Color	Black	Gerber File	Available
Diameter	16.1 mm		
Height	9.5 mm		
Style	Round		
Optic Material	PMMA		
Holder Material	-		
Fastening	["pin", "tape"]		
Status	Production ready		

**Product number FA11204\_TINA-O**

Family	Tina	FWHM	34+12 degrees
Type	Assembly	Efficiency	80 %
LED	Oslon SSL 80	cd/Im	3.800
Color	Black	Gerber File	Available
Diameter	16.1 mm		
Height	9.5 mm		
Style	Round		
Optic Material	PMMA		
Holder Material	-		
Fastening	["pin", "tape"]		
Status	Production ready		

# PRODUCT DATASHEET

## Tina series

last update 13/11/2012

**Product number FA11207\_TINA-W**

Family	Tina	FWHM	48 degrees
Type	Assembly	Efficiency	87 %
LED	Oslon SSL 80	cd/Im	1.100
Color	Black	Gerber File	Available
Diameter	16.1 mm		
Height	9.5 mm		
Style	Round		
Optic Material	PMMA		
Holder Material	-		
Fastening	["tape", "pin"]		
Status	Production ready		

**Product number FA11027\_TINA-WW**

Family	Tina	FWHM	66 degrees
Type	Assembly	Efficiency	87 %
LED	Oslon SSL 80	cd/Im	0.800
Color	Black	Gerber File	Available
Diameter	16.1 mm		
Height	9.5 mm		
Style	Round		
Optic Material	PMMA		
Holder Material	-		
Fastening	["pin", "tape"]		
Status	Production ready		

**NOTE: The typical divergence will be changed by different color, chip size and chip position tolerance. The typical total divergence is the full angle measured where the luminous intensity is half of the peak value.**



## PRODUCT DATASHEET

### Tina series

last update 13/11/2012

#### GENERAL INFORMATION

- Product series especially designed & optimized for Oscon SSL 80 series of LEDs.
- Special care taken to make light distribution as uniform as possible.
- Lens material optical grade PMMA with high UV and temperature resistance. Allows use of high current and temperature conditions.

Please find more information about used material from below:

[http://ledil.fi/sites/default/files/Documents/Technical/Material/PMMA%20N%20UL94\\_Yellow%20Card.pdf](http://ledil.fi/sites/default/files/Documents/Technical/Material/PMMA%20N%20UL94_Yellow%20Card.pdf)

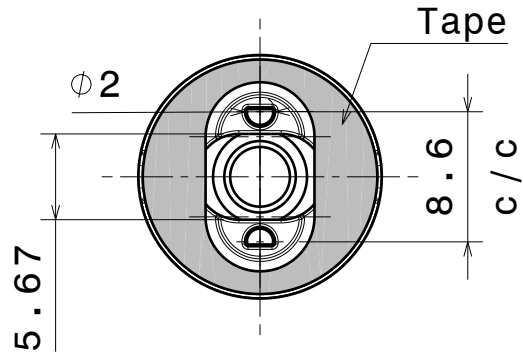
<http://ledil.fi/sites/default/files/Documents/Technical/Material/PMMA%20N%20PLEXIGLAS-Datasheet.pdf>

D

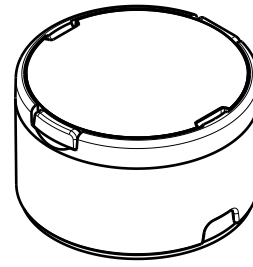
C

B

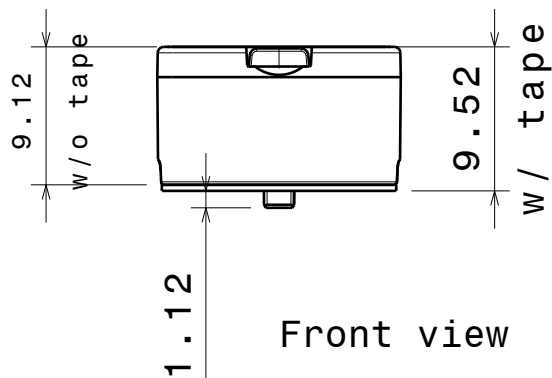
A



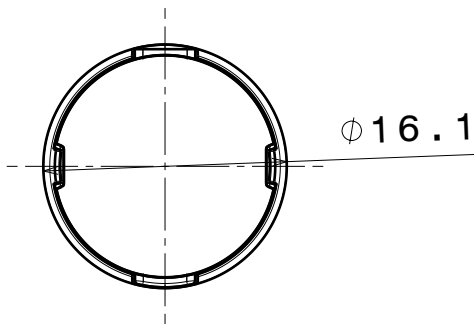
Bottom view



Isometric view



Front view



Top view

Materials  
 Lens: PMMA  
 Holder: PC  
 Tape: PU Foam

This drawing is our property.  
 It can't be reproduced  
 or communicated without  
 our written agreement.

LEDIL

Ledil Oy  
 Salorankatu 10  
 FIN 24240 SALO  
 Finland

DRAWING TITLE

Mechanical Drawing

DRAWN BY

DATE

as

10.9.2012

TINA-OSL

CHECKED BY

DATE

sn

-

SIZE

PART NUMBER

REV

A4

TINA-OSL

001

DESIGNED BY

DATE

-

-

SCALE

2:1

WEIGHT

1,47 g

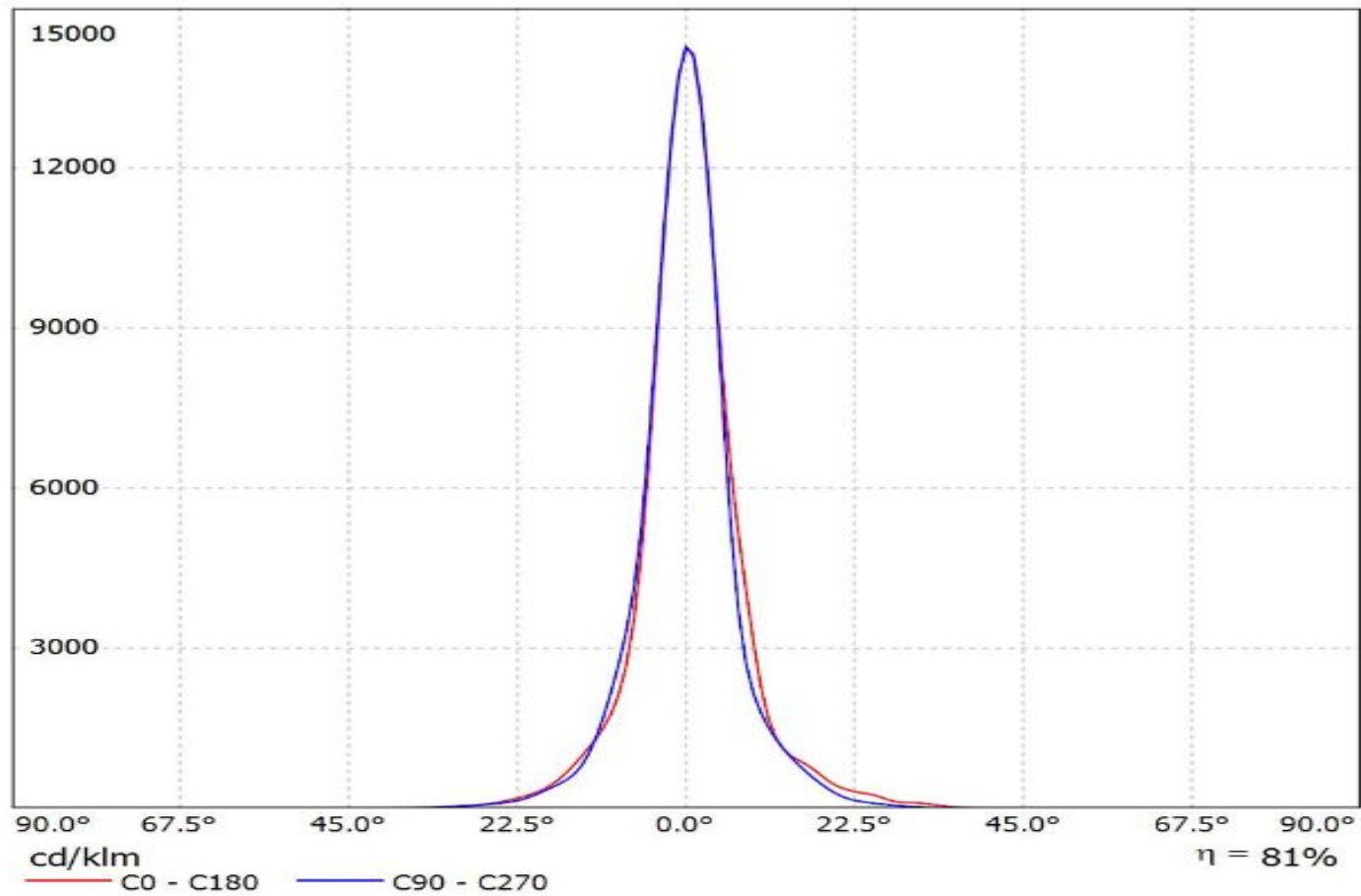
SHEET

1/1

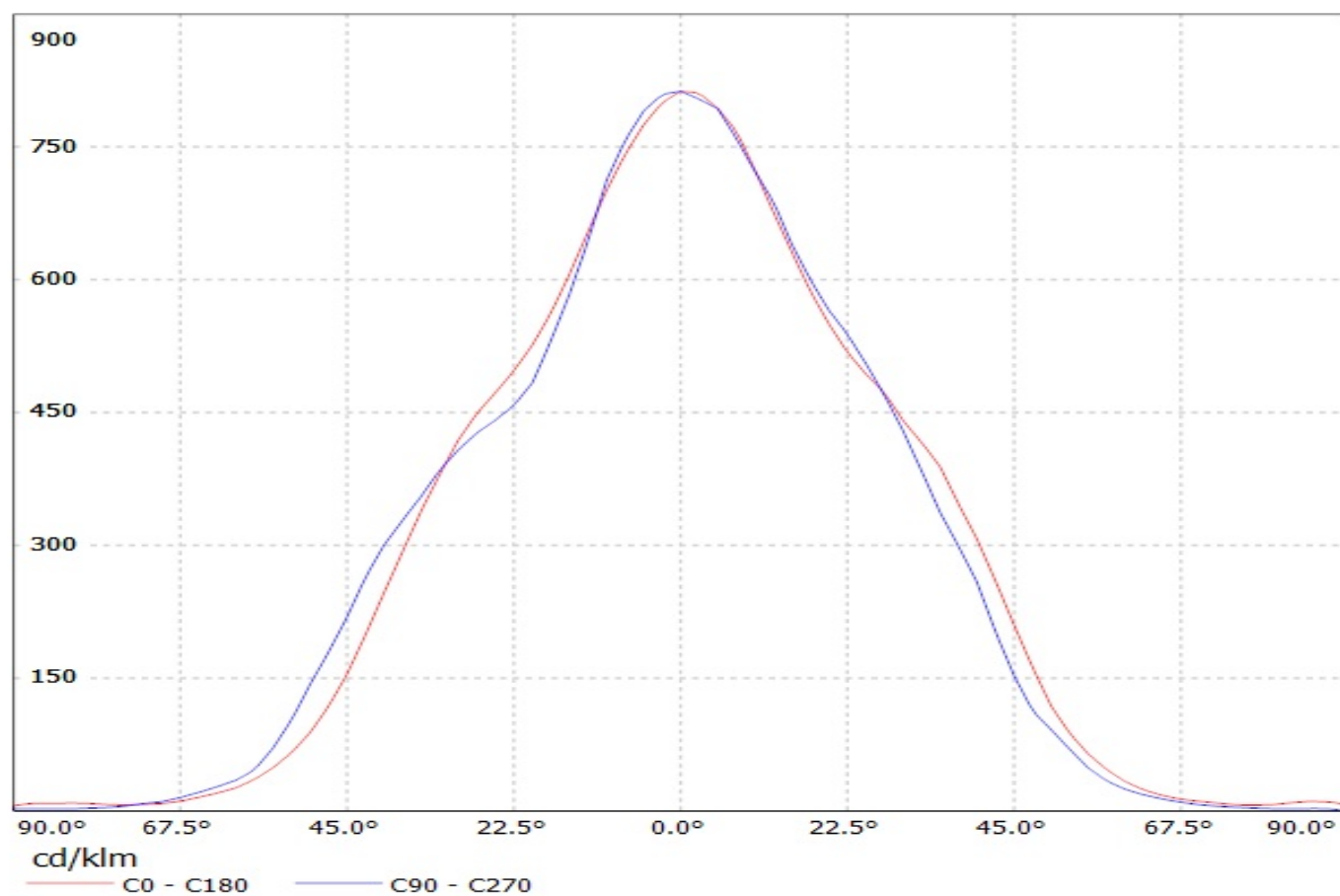
D

A

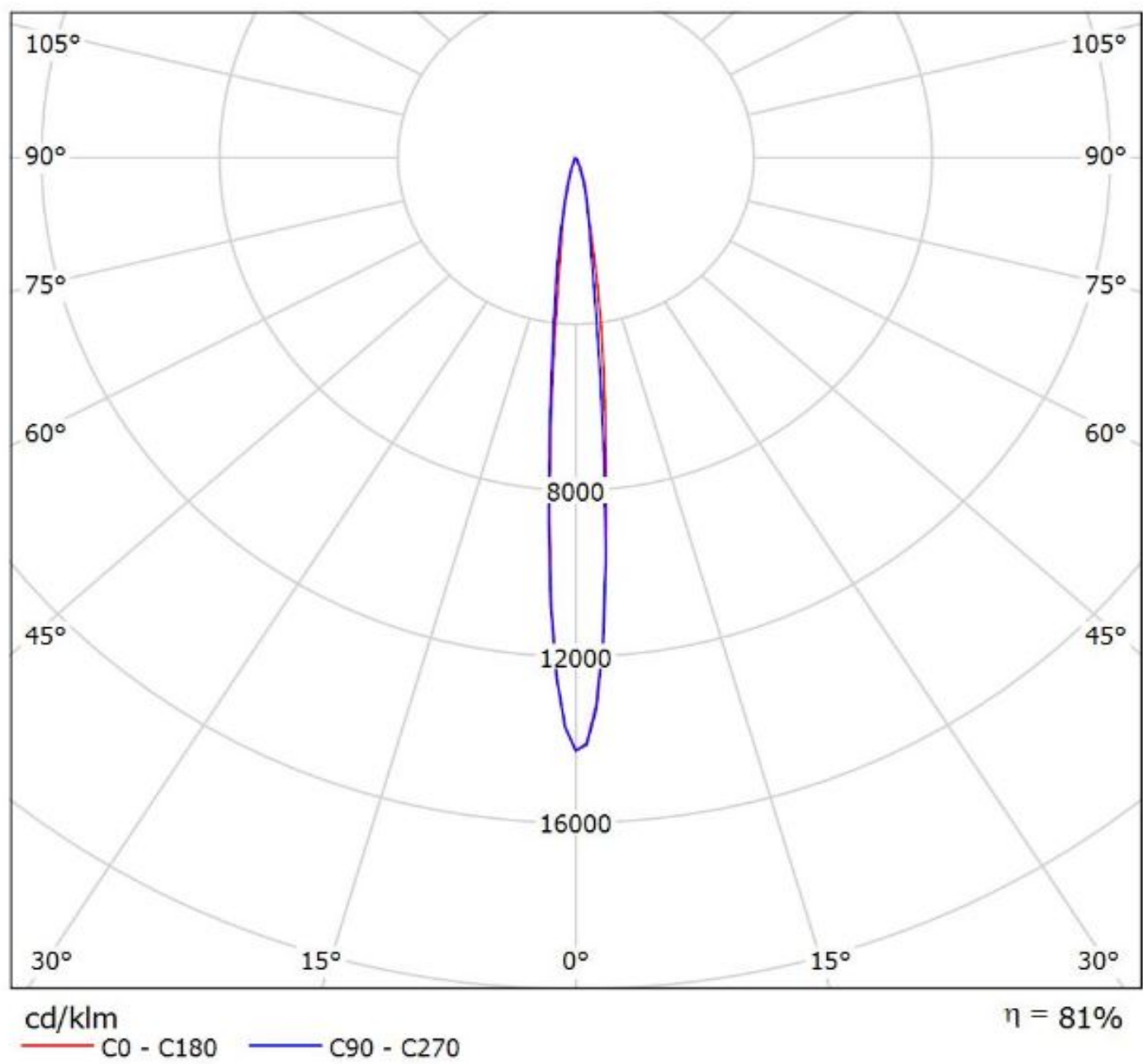
Luminaire: Ledil Oy FA11208\_TINA-RS-OSL-80  
Lamps: 1 x Osram Oslon 80 250mA 85lm



Luminaire: Ledil Oy FA11027\_TINA-WWW (Osram Oslon 80dg 85lm @ 250mA) Efficiency=87%  
Lamps: 1 x Osram Oslon 80dg 85lm @ 250mA



Luminaire: Ledil Oy FA11208\_TINA-RS-OSL-80  
Lamps: 1 x Osram Oslon 80 250mA 85lm



Luminaire: Ledil Oy FA11027\_TINA-WW (Osram Oslon 80dg 85lm @ 250mA) Efficiency=87%  
Lamps: 1 x Osram Oslon 80dg 85lm @ 250mA

