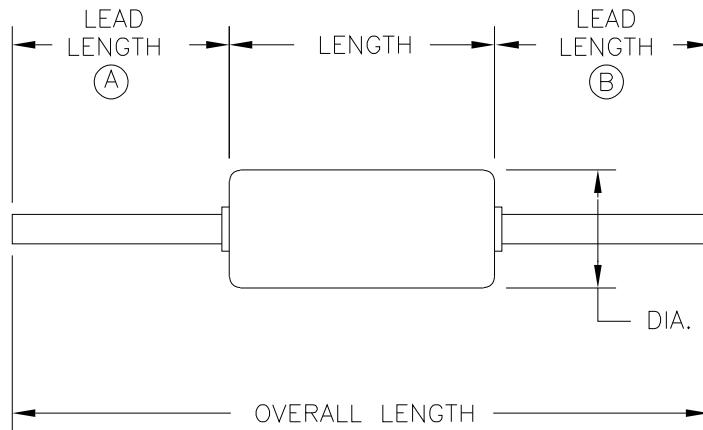


REV.	CHANGE	DATE	APPD.
A	RTE SHT REV PER ECO 6934	5.5.94	MUCH
B	RTE SHT REV PER ECO 13585	02AUG99	



DIAMETER .080 NOM

LENGTH .180 MAX

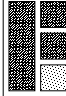
OVERALL LENGTH .470  $\pm$ .010

LEAD LENGTH DIFFERENCE BETWEEN LENGTHS A & B  
MUST NOT BE GREATER THAN .020

LEAD MATERIAL .020 DIA. COPPER CLAD STEEL – TINNED  
LEADS MUST BE STRAIGHT (MAX 5° BEND)

RESISTANCE (OHMS)

TEMP °C	MINIMUM	NOMINAL	MAXIMUM	REF TOL
5	24130	25400	26670	$\pm$ 5%
25	9500.0	10000	10500	$\pm$ 5%
45	4152.0	4370.0	4588.0	$\pm$ 5%

<b>TOLERANCES</b> UNLESS OTHERWISE NOTED, ALL DIMENSIONS ARE IN INCHES, AND TOLERANCES ARE AS SHOWN HERE.  FRACTIONS = $\pm 1/64$ DECIMALS .XX = .01 .XXX = .005  ANGLES = 0°30'		DRAWN HS	DATE 3 16 94	 <b>FENWAL ELECTRONICS</b> 450 Fortune Boulevard, Milford, MA 01757-1745 (508) 478-6000 / FAX (508) 473-6035		
		CHECKED MUCH	DATE 3 16 94			
		APPROVED SRP	DATE 3 16 94	TITLE NTC THERMISTOR OUTLINE		
USED ON ECO 6665		This information is the property of FENWAL ELECTRONICS. It is submitted in confidence, and is not to be disclosed or utilized without written permission.				
SHEET 1	OF 1	DO NOT SCALE DRAWING	SCALE 8:1	SIZE A	DRAWING NUMBER 135-103LZF-J02	REV. B