



Part Number : [50842042](#)

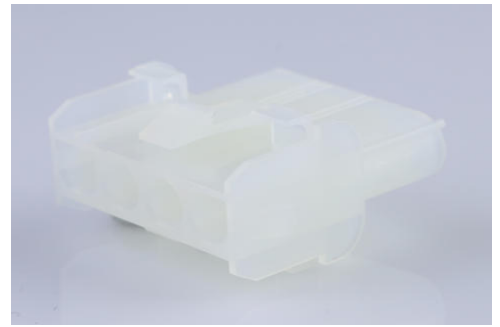
Product Description : 2.13mm Diameter MLX Pin and Socket Receptacle, 4 Circuits, Natural

Series Number : 42022

Status : Active

Product Category : Connector Housings

Engineering Part Number : 42022-4C



Documents and Resources

Drawings

[050842042_sd.pdf](#)

[PK-42022-XX-001.pdf](#)

3D Models and Design Files

[STEP AP242](#)

[SOLIDWORKS](#)

[Creo](#)


Specifications

[PS-42022-0001-001.pdf](#)

[TS-42022-0001-001.pdf](#)

Product Environment Compliance

Compliance

| | |
|--------------------|---|
| GADSL/IMDS | Not Relevant |
| China RoHS |  per SJ/T 11365-2006 |
| EU ELV | Not Relevant |
| Low-Halogen Status | Low-Halogen per IEC 61249-2-21 |
| REACH SVHC | Not Contained per D(2025)7771-DC (04 Feb 2026) |
| EU RoHS | Compliant per EU 2015/863 |

[Compliance Statements](#)

- EU RoHS

- REACH SVHC
- Low-Halogen

Industry Documents

- IPC 1752A Class C
- IPC 1752A Class D
- Molex Product Compliance Declaration
- IEC-62474
- chemSHERPA (xml)

Substances of Interest

- PFAS

EU RoHS Certificate of Compliance

Additional Product Compliance Information

Part Details

General

| | |
|--------------|---|
| Status | Active |
| Category | Connector Housings |
| Series | 42022 |
| Description | 2.13mm Diameter MLX Pin and Socket Receptacle, 4 Circuits, Natural |
| Application | Power, Wire-to-Wire |
| Comments | Glow Wire Equivalent Part Number 366440004; Maximum current per contact 20A if used with 36663 and 36664 terminal |
| Product Name | MLX |
| UPC | 800754386579 |

Agency

| | |
|-----|---------|
| CSA | LR19980 |
| UL | E29179 |

Physical

| | |
|--------------------|---------|
| Circuits Detail | 4 |
| Circuits (maximum) | 4 |
| Color - Resin | Natural |

| | |
|-------------------------------|----------------|
| Gender | Receptacle |
| Glow-Wire Capable | No |
| Keying to Mating Part | No |
| Lock to Mating Part | Yes |
| Material - Resin | Nylon |
| Net Weight | 4.130/g |
| Number of Rows | 1 |
| Packaging Type | Carton |
| Panel Mount | Yes |
| Pitch - Mating Interface | 6.35mm |
| Polarized to Mating Part | Yes |
| Stackable | No |
| Temperature Range - Operating | -55° to +105°C |

Solder Process Data

| | |
|------------------------------|-----|
| Lead-Free Process Capability | N/A |
|------------------------------|-----|

Mates With / Use With

Mates with Part(s)

| Description | Part Number |
|---|-----------------------|
| 2.13mm Diameter MLX Power Crimp Housing Plugs | 42021 |

Use with Part(s)

| Description | Part Number |
|---|---------------------------|
| Pre-Crimped Lead MLX Male-to-MLX Male, Tin (Sn) Plating, 150.00mm Length, 18 AWG, Black | 797582029 |
| Pre-Crimped Lead MLX Male-to-MLX Male, Tin (Sn) Plating, 300.00mm Length, 18 AWG, Black | 797582030 |
| Pre-Crimped Lead MLX Female-to-MLX Female, Tin (Sn) Plating, 150.00mm Length, 18 AWG, Black | 797582031 |
| Pre-Crimped Lead MLX Female-to-MLX Female, Tin (Sn) Plating, | 797582032 |

| | |
|--------------------------------|--------------|
| 300.00mm Length, 18 AWG, Black | |
| MLX Male Crimp Terminals | <u>42023</u> |
| MLX Female Crimp Terminals | <u>42024</u> |

This document was generated on May 04, 2026