

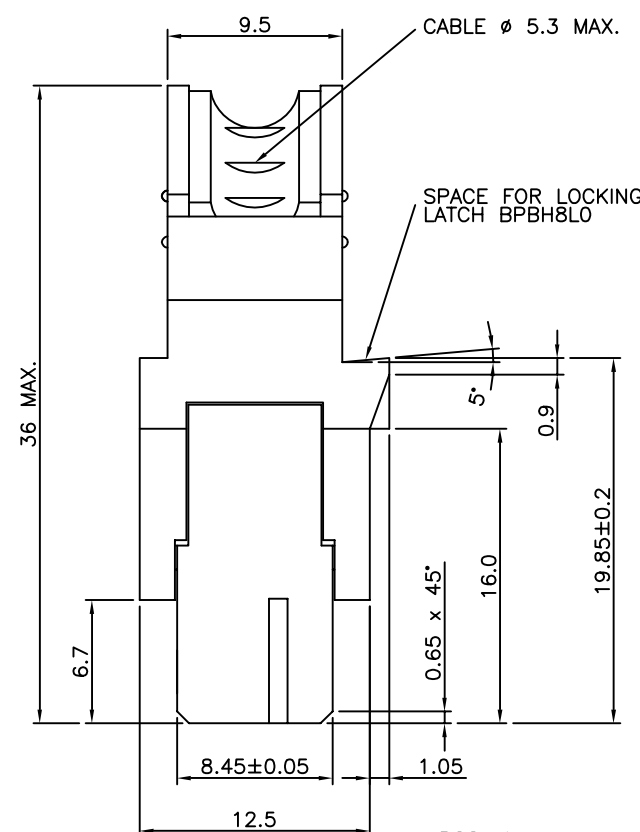
PRODUCT NUMBER BPS8B09ACD-C0---

WIRE ACCOMODATION		
PRODUCT NUMBER	WIRE SIZE	CONTACT IDENTIFICATION
BPS8B09ACD0C0--	AWG28/30	0
BPS8B09ACD2C0--	AWG24/26	2

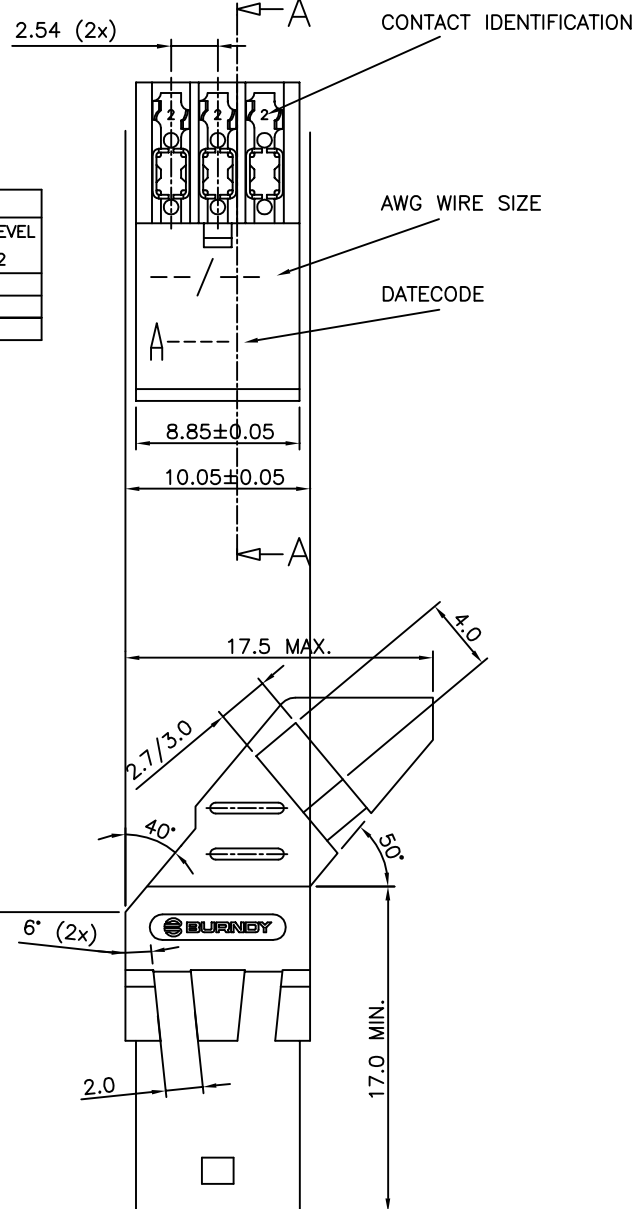
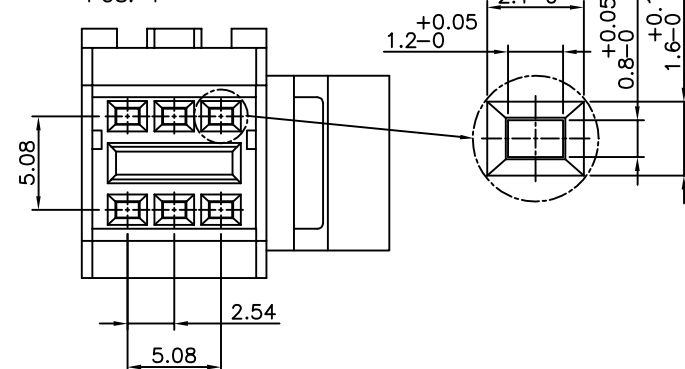
WITH "LF" SUFFIX	LEAD FREE OR RoHS COMPATIBLE PRODUCT
WITHOUT SUFFIX	LEADED PRODUCT

CONTACT PLATING	
PLATING CODE	PERFORMANCE LEVEL PER DIN41612
Z0	CLASS 3
Z1	CLASS 2
E9	CLASS 1

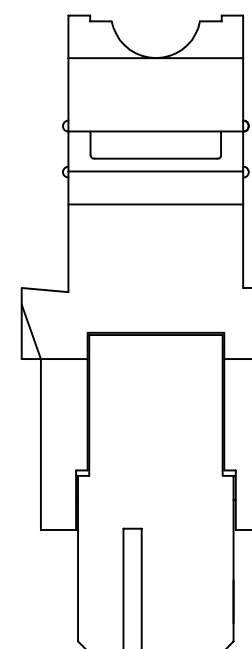
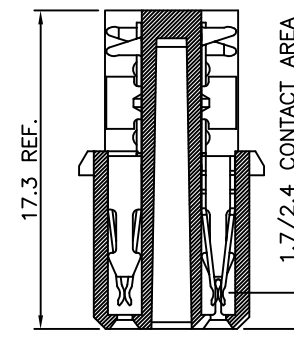
ASSEMBLED VIEW

ROW A
ROW C

POS. 1



SECTION AA



NOTES:-

1. THE "LF" PRODUCTS MEET EUROPEAN UNION DIRECTIVES AND OTHER COUNTRY REGULATIONS AS DESCRIBED IN GS-22-008
2. LEAD FREE OR RoHS DIRECTIVE LABELING TO BE PROVIDED AS PER GS-14-920 FOR RoHS COMPATIBLE VERSION.

PERFORMANCES CHARACTERISTICS

- VOLTAGE RATING : 250 VAC (rms)
- CURRENT RATING : 1,5 A AT 25 °C, 1 A AT 70 °C.
- INSULATION RESISTANCE : 1000 MΩ INITIAL, 100 MΩ MIN. AFTER TEST
- DIELECTRIC WITH-
- STANDING VOLTAGE : 1000 VAC (rms).
- CONTACT RESISTANCE : 15 mΩ MAX. INITIAL, 5 mΩ MAX. RISE OF INITIAL VALUE AFTER TEST.
- OPERATING TEMPERATURE*: -40 °C TO +125 °C.
- INSERTION FORCE : 1 N MAX./CONTACT.
- WITHDRAWAL FORCE : 0,2 N MIN./CONTACT.
- *DEPENDING ON THE CABLE, THE MAX. TEMPERATURE CAN BE LOWER.
- FOR STANDARD PVC INSULATED CABLE : 105 °C MAX.

CONSTRUCTION

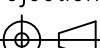
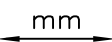

- BODY MATERIAL : GLASS-REINFORCED THERMOPLASTIC (UL94V-0).
- COVER MATERIAL : POLYESTER (PBTP), COLOUR : BLACK.
- CONTACT MATERIAL : PHOSPHOR BRONZE.
- CONTACT FINISH : Au OVER Ni IN CONTACT AREA
- SnPb ON I.D.C. TERMINAL FOR LEADED PRODUCTS.
- Sn (MATTE TIN) ON I.D.C. TERMINAL FOR LEAD FREE PRODUCTS.
- Z0 : PERFORMANCE LEVEL PER DIN41612 CLASS 3
- Z1 : PERFORMANCE LEVEL PER DIN41612 CLASS 2
- E9 : PERFORMANCE LEVEL PER DIN41612 CLASS 1
- OTHERS : CONSULT FCI
- TIE-WRAP : OPTIONAL (PART N°. TF3)

AWG WIRE SIZE MARKING

- BPS8B09ACD0C0-- : 28/30
- BPS8B09ACD0C0--LF : 28/30
- BPS8B09ACD2C0-- : 24/26
- BPS8B09ACD0C0--LF : 24/26

DATECODE MARKING

- A + YEAR & WEEKCODE, EXAMPLE : A9950.

mat'l. code SEE NOTE				surface ISO 1302		tolerance ISO 406 ISO 1101		projection 		product family BPS8				
ltr	ecn no	dr	date	tolerances unless otherwise specified						title				
A	F00819	DLE	2000-10-23	angles	linear	0.1±0.2		scale —		ASSY BPS8 09 POS. A,C LOADED				
B	I05-0123	MINI	2005-07-27			0.01±0.1								
C	I06-0067	MINI	2006-06-01			±1°								
				dr	D.LEGRAND		2000-10-23			dwg no		sheet 1 of 2		size
				engr	J.F.NOTTEAU		2000-10-23			55349		A3		
				chr	RAKHEE GEORGE		2006-06-01							
				appd	RAKHEE GEORGE		2006-06-01			type		Product	Customer	Drawing
sheet index		revision sheet		C	C									
				1	2									



FCIconnect.com

Copyright FCI

NOTES:-
1. THE "LF" PRODUCTS MEET EUROPEAN UNION DIRECTIVES AND OTHER COUNTRY
2. LEAD FREE OR RoHS DIRECTIVE LABELING TO BE PROVIDED AS PER GS-14-920 FOR RoHS COMPATIBLE VERSION.

PERFORMANCES CHARACTERISTICS
VOLTAGE RATING : 250 VAC (rms)
CURRENT RATING : 1,5 A AT 25 °C, 1 A AT 70 °C.
INSULATION RESISTANCE : 1000 MΩ INITIAL, 100 MΩ MIN. AFTER TEST
DIELECTRIC WITH-
STANDING VOLTAGE : 1000 VAC (rms).
CONTACT RESISTANCE : 15 mΩ MAX. INITIAL, 5 mΩ MAX. RISE OF INITIAL VALUE AFTER TEST.
OPERATING TEMPERATURE*: -40 °C TO +125 °C.
INSERTION FORCE : 1 N MAX./CONTACT.
WITHDRAWAL FORCE : 0,2 N MIN./CONTACT.
*DEPENDING ON THE CABLE, THE MAX. TEMPERATURE CAN BE LOWER.
FOR STANDARD PVC INSULATED CABLE : 105 °C MAX.

CONSTRUCTION
BODY MATERIAL : GLASS-REINFORCED THERMOPLASTIC (UL94V-0).
CONTACT MATERIAL : PHOSPHOR BRONZE.
CONTACT FINISH : Au OVER Ni IN CONTACT AREA
SnPb ON I.D.C. TERMINAL FOR LEADED PRODUCTS.
Sn (MATTE TIN) ON I.D.C TERMINAL FOR LEAD FREE PRODUCTS.
Z0 : PERFORMANCE LEVEL PER DIN41612 CLASS 3
Z1 : PERFORMANCE LEVEL PER DIN41612 CLASS 2
E9 : PERFORMANCE LEVEL PER DIN41612 CLASS 1
OTHERS : CONSULT FCI

PART NUMBERS
BPS8B09ACD000----- CONNECTOR FOR WIRE SIZE AWG28, AWG30.
(CONTACT IDENTIFICATION : 0).
BPS8B09ACD200----- CONNECTOR FOR WIRE SIZE AWG24, AWG26
(CONTACT IDENTIFICATION : 2).

AWG WIRE SIZE MARKING
BPS8B09ACD000-- : 28/30
BPS8B09ACD000--LF : 28/30
BPS8B09ACD200-- : 24/26
BPS8B09ACD200--LF : 24/26

DATECODE MARKING
A + YEAR & WEEKCODE, EXAMPLE : A9950.

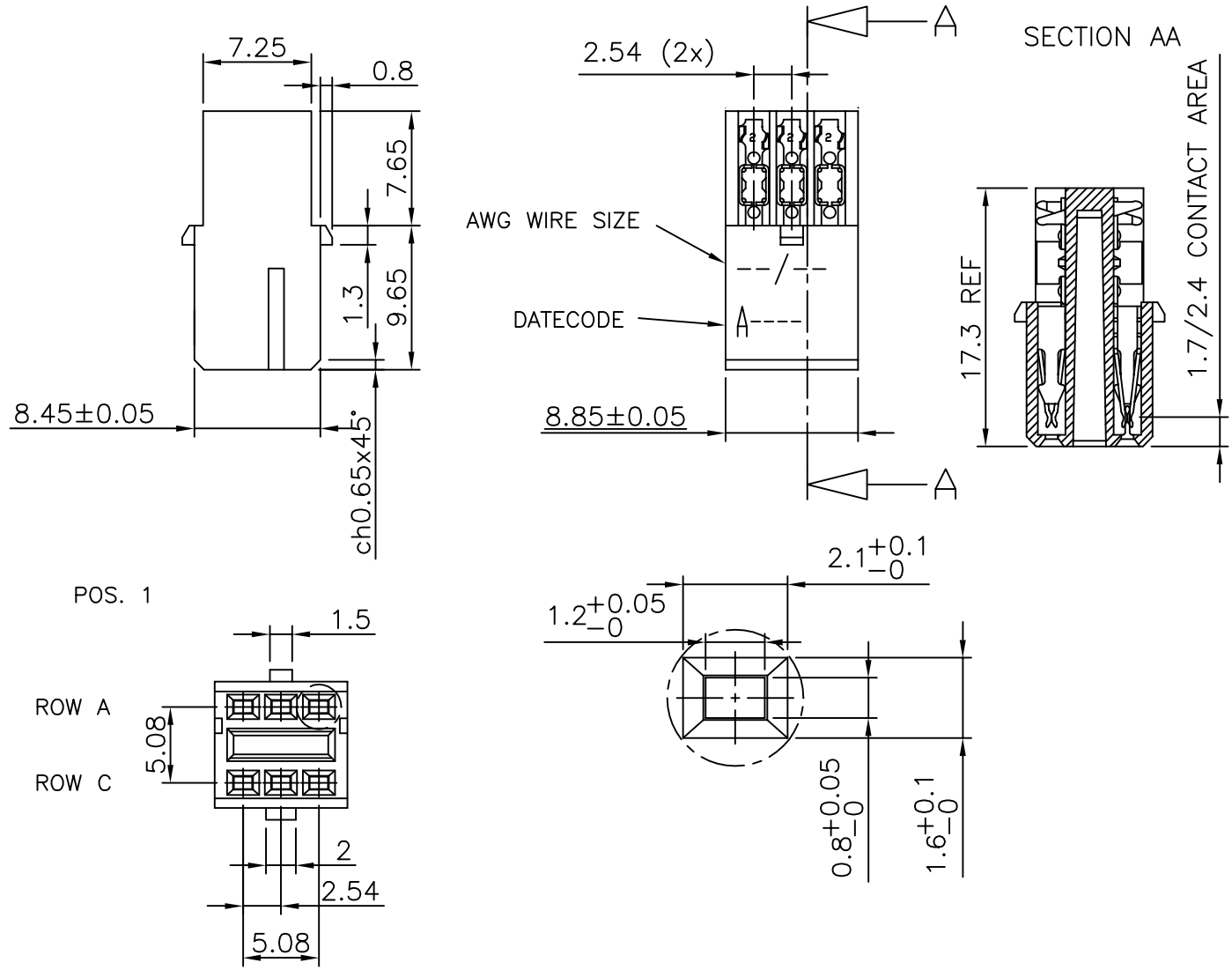
PRODUCT NUMBER BPS8B09ACD-00-----


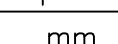

WITH "LF" SUFFIX	LEAD FREE OR RoHS COMPATIBLE PRODUCT
WITHOUT SUFFIX	LEADED PRODUCT

WIRE ACCOMODATION		
PRODUCT NUMBER	WIRE SIZE	CONTACT IDENTIFICATION
BPS8B09ACD000--	AWG28/30	0
BPS8B09ACD200--	AWG24/26	2

CONTACT PLATING	
PLATING CODE	PERFORMANCE LEVEL PER DIN41612
Z0	CLASS 3
Z1	CLASS 2
E9	CLASS 1

CONTACT IDENTIFICATION



mat'l. code SEE NOTE				surface ISO 1302 ✓		tolerance ISO 406 ISO 1101		projection 		product family BPS8									
ltr	ecn no	dr	date	tolerances unless otherwise specified						title ASSY BPS8 09 POS. A,C LOADED									
A	F00819	DLE	2000-10-19	angles	linear	0.1±0.2													
B	I05-0123	MINI	2005-07-27			0.01±0.1													
C	I06-0067	MINI	2006-06-01			±1*													
				dr	D.LEGRAND		2000-10-19												
				engr	J.F.NOTTEAU		2000-10-19												
				chr	RAKHEE GEORGE		2006-06-01												
				appd	RAKHEE GEORGE		2006-06-01												
sheet index		revision sheet		C	1														