



Is Now Part of



**ON Semiconductor®**

To learn more about ON Semiconductor, please visit our website at  
[www.onsemi.com](http://www.onsemi.com)

Please note: As part of the Fairchild Semiconductor integration, some of the Fairchild orderable part numbers will need to change in order to meet ON Semiconductor's system requirements. Since the ON Semiconductor product management systems do not have the ability to manage part nomenclature that utilizes an underscore (\_), the underscore (\_) in the Fairchild part numbers will be changed to a dash (-). This document may contain device numbers with an underscore (\_). Please check the ON Semiconductor website to verify the updated device numbers. The most current and up-to-date ordering information can be found at [www.onsemi.com](http://www.onsemi.com). Please email any questions regarding the system integration to [Fairchild\\_questions@onsemi.com](mailto:Fairchild_questions@onsemi.com).

ON Semiconductor and the ON Semiconductor logo are trademarks of Semiconductor Components Industries, LLC dba ON Semiconductor or its subsidiaries in the United States and/or other countries. ON Semiconductor owns the rights to a number of patents, trademarks, copyrights, trade secrets, and other intellectual property. A listing of ON Semiconductor's product/patent coverage may be accessed at [www.onsemi.com/site/pdf/Patent-Marking.pdf](http://www.onsemi.com/site/pdf/Patent-Marking.pdf). ON Semiconductor reserves the right to make changes without further notice to any products herein. ON Semiconductor makes no warranty, representation or guarantee regarding the suitability of its products for any particular purpose, nor does ON Semiconductor assume any liability arising out of the application or use of any product or circuit, and specifically disclaims any and all liability, including without limitation special, consequential or incidental damages. Buyer is responsible for its products and applications using ON Semiconductor products, including compliance with all laws, regulations and safety requirements or standards, regardless of any support or applications information provided by ON Semiconductor. "Typical" parameters which may be provided in ON Semiconductor data sheets and/or specifications can and do vary in different applications and actual performance may vary over time. All operating parameters, including "Typicals" must be validated for each customer application by customer's technical experts. ON Semiconductor does not convey any license under its patent rights nor the rights of others. ON Semiconductor products are not designed, intended, or authorized for use as a critical component in life support systems or any FDA Class 3 medical devices or medical devices with a same or similar classification in a foreign jurisdiction or any devices intended for implantation in the human body. Should Buyer purchase or use ON Semiconductor products for any such unintended or unauthorized application, Buyer shall indemnify and hold ON Semiconductor and its officers, employees, subsidiaries, affiliates, and distributors harmless against all claims, costs, damages, and expenses, and reasonable attorney fees arising out of, directly or indirectly, any claim of personal injury or death associated with such unintended or unauthorized use, even if such claim alleges that ON Semiconductor was negligent regarding the design or manufacture of the part. ON Semiconductor is an Equal Opportunity/Affirmative Action Employer. This literature is subject to all applicable copyright laws and is not for resale in any manner.

## 74VCX164245

# Low Voltage 16-Bit Dual Supply Translating Transceiver with 3-STATE Outputs

## General Description

The VCX164245 is a dual supply, 16-bit translating transceiver that is designed for two way asynchronous communication between busses at different supply voltages by providing true signal translation. The supply rails consist of  $V_{CCB}$ , which is the higher potential rail operating at 2.3V to 3.6V and  $V_{CCA}$ , which is the lower potential rail operating at 1.65V to 2.7V. ( $V_{CCA}$  must be less than or equal to  $V_{CCB}$  for proper device operation.) This dual supply design allows for translation from 1.8V to 2.5V busses to busses at a higher potential, up to 3.3V.

The Transmit/Receive ( $\overline{T/R}$ ) input determines the direction of data flow. Transmit (active-HIGH) enables data from A Ports to B Ports. Receive (active-LOW) enables data from B Ports to A Ports. The Output Enable ( $\overline{OE}$ ) input, when HIGH, disables both A and B Ports by placing them in a High-Z condition. The A Port interfaces with the lower voltage bus (1.8V – 2.5V). The B Port interfaces with the higher voltage bus (2.7V – 3.3V). Also the VCX164245 is designed so that the control pins ( $\overline{T/R}_n$ ,  $\overline{OE}_n$ ) are supplied by  $V_{CCB}$ .

The 74VCX164245 is suitable for mixed voltage applications such as notebook computers using a 1.8V CPU and 3.3V peripheral components. It is fabricated with an Advanced CMOS technology to achieve high speed operation while maintaining low CMOS power dissipation.

## Features

- Bidirectional interface between busses ranging from 1.65V to 3.6V
- Supports Live Insertion and Withdrawal (Note 1)
- Static Drive ( $I_{OH}/I_{OL}$ )
  - ±24 mA @ 3.0V  $V_{CC}$
  - ±18 mA @ 2.3V  $V_{CC}$
  - ±6 mA @ 1.65V  $V_{CC}$
- Uses proprietary noise/EMI reduction circuitry
- Functionally compatible with 74 series 16245
- Latchup performance exceeds 300 mA
- ESD performance:
  - Human Body Model >2000V
  - Machine model >200V
- Also packaged in plastic Fine-Pitch Ball Grid Array (FBGA)

**Note 1:** To ensure the high impedance state during power up or power down,  $\overline{OE}_n$  should be tied to  $V_{CCB}$  through a pull up resistor. The minimum value of the resistor is determined by the current sourcing capability of the driver.

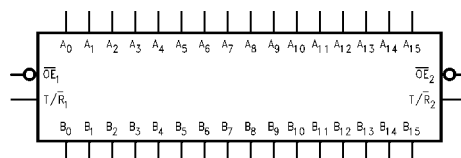
## Ordering Code:

| Order Number                     | Package Number | Package Description   |
|----------------------------------|----------------|---|
| 74VCX164245G<br>(Note 2)(Note 3) | BGA54A         | 54-Ball Fine-Pitch Ball Grid Array (FBGA), JEDEC MO-205, 5.5mm Wide         |
| 74VCX164245MTD<br>(Note 3)       | MTD48          | 48-Lead Thin Shrink Small Outline Package (TSSOP), JEDEC MO-153, 6.1mm Wide |

**Note 2:** Ordering Code "G" indicates Trays.

**Note 3:** Device also available in Tape and Reel. Specify by appending suffix letter "X" to the ordering code.

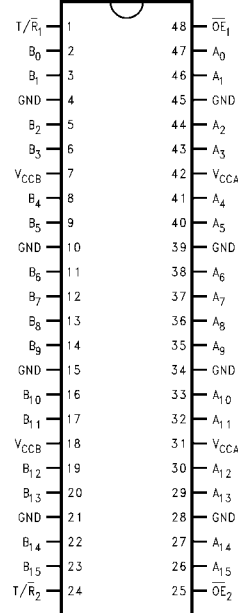
## Logic Diagram



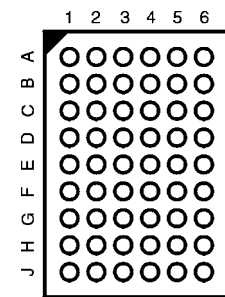
74VCX164245 Low Voltage 16-Bit Dual Supply Translating Transceiver with 3-STATE Outputs

## Connection Diagrams

Pin Assignment for TSSOP



Pin Assignment for FBGA



(Top Through View)

## Pin Descriptions

| Pin Names          | Description                      |
|--------------------|----------------------------------|
| $\overline{OE}_n$  | Output Enable Input (Active LOW) |
| $T/\overline{R}_n$ | Transmit/Receive Input           |
| $A_0$ – $A_{15}$   | Side A Inputs or 3-STATE Outputs |
| $B_0$ – $B_{15}$   | Side B Inputs or 3-STATE Outputs |
| NC                 | No Connect                       |

## FBGA Pin Assignments

|          | 1        | 2        | 3                  | 4                 | 5        | 6        |
|----------|----------|----------|--------------------|-------------------|----------|----------|
| <b>A</b> | $B_0$    | NC       | $T/\overline{R}_1$ | $\overline{OE}_1$ | NC       | $A_0$    |
| <b>B</b> | $B_2$    | $B_1$    | NC                 | NC                | $A_1$    | $A_2$    |
| <b>C</b> | $B_4$    | $B_3$    | $V_{CCB}$          | $V_{CCA}$         | $A_3$    | $A_4$    |
| <b>D</b> | $B_6$    | $B_5$    | GND                | GND               | $A_5$    | $A_6$    |
| <b>E</b> | $B_8$    | $B_7$    | GND                | GND               | $A_7$    | $A_8$    |
| <b>F</b> | $B_{10}$ | $B_9$    | GND                | GND               | $A_9$    | $A_{10}$ |
| <b>G</b> | $B_{12}$ | $B_{11}$ | $V_{CCB}$          | $V_{CCA}$         | $A_{11}$ | $A_{12}$ |
| <b>H</b> | $B_{14}$ | $B_{13}$ | NC                 | NC                | $A_{13}$ | $A_{14}$ |
| <b>J</b> | $B_{15}$ | NC       | $T/\overline{R}_2$ | $\overline{OE}_2$ | NC       | $A_{15}$ |

## Truth Tables

| Inputs            |                    | Outputs                                       |
|-------------------|--------------------|---|
| $\overline{OE}_1$ | $T/\overline{R}_1$ |   |
| L                 | L                  | Bus $B_0$ – $B_7$ Data to Bus $A_0$ – $A_7$   |
| L                 | H                  | Bus $A_0$ – $A_7$ Data to Bus $B_0$ – $B_7$   |
| H                 | X                  | HIGH Z State on $A_0$ – $A_7$ , $B_0$ – $B_7$ |

| Inputs            |                    | Outputs   |
|-------------------|--------------------|---|
| $\overline{OE}_2$ | $T/\overline{R}_2$ |   |
| L                 | L                  | Bus $B_8$ – $B_{15}$ Data to Bus $A_8$ – $A_{15}$   |
| L                 | H                  | Bus $A_8$ – $A_{15}$ Data to Bus $B_8$ – $B_{15}$   |
| H                 | X                  | HIGH-Z State on $A_8$ – $A_{15}$ , $B_8$ – $B_{15}$ |

H = HIGH Voltage Level

L = LOW Voltage Level

X = Immaterial (HIGH or LOW, inputs may not float)

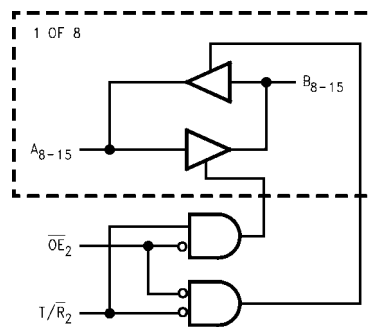
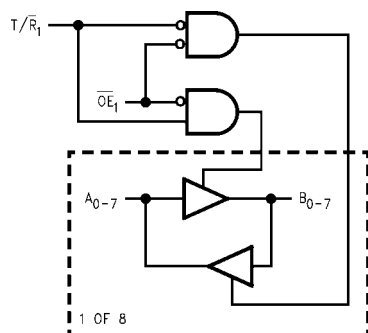
Z = High Impedance

## Translator Power Up Sequence Recommendations

To guard against power up problems, some simple guidelines need to be adhered to. The VCX164245 is designed so that the control pins ( $T/\overline{R}_n$ ,  $\overline{OE}_n$ ) are supplied by  $V_{CCB}$ . Therefore the first recommendation is to begin by powering up the control side of the device,  $V_{CCB}$ . The  $\overline{OE}_n$  control pins should be ramped with or ahead of  $V_{CCB}$ , this will guard against bus contentions and oscillations as all A Port and B Port outputs will be disabled. To ensure the high impedance state during power up or power down,  $\overline{OE}_n$  should be tied to  $V_{CCB}$  through a pull up resistor. The minimum value of the resistor is determined by the current

sourcing capability of the driver. Second, the  $T/\overline{R}_n$  control pins should be placed at logic low (0V) level, this will ensure that the B-side bus pins are configured as inputs to help guard against bus contention and oscillations. B-side Data Inputs should be driven to a valid logic level (0V or  $V_{CCB}$ ), this will prevent excessive current draw and oscillations.  $V_{CCA}$  can then be powered up after  $V_{CCB}$ , but should never exceed the  $V_{CCB}$  voltage level. Upon completion of these steps the device can then be configured for the users desired operation. Following these steps will help to prevent possible damage to the translator device as well as other system components.

## Logic Diagrams



Please note that these diagrams are provided only for the understanding of logic operations and should not be used to estimate propagation delays.

**Absolute Maximum Ratings**(Note 4)

|   |                           |
|---|---------------------------|
| Supply Voltage                                    |                           |
| $V_{CCA}$   | -0.5V to $V_{CCB}$        |
| $V_{CCB}$   | -0.5V to 4.6V             |
| DC Input Voltage ( $V_I$ )                        | -0.5V to +4.6V            |
| DC Output Voltage ( $V_{I/O}$ )                   |                           |
| Outputs 3-STATE                                   | -0.5V to +4.6V            |
| Outputs Active (Note 5)                           |                           |
| $A_n$   | -0.5V to $V_{CCA} + 0.5V$ |
| $B_n$   | -0.5V to $V_{CCB} + 0.5V$ |
| DC Input Diode Current ( $I_{IK}$ )               |                           |
| $V_I < 0V$  | -50 mA                    |
| DC Output Diode Current ( $I_{OK}$ )              |                           |
| $V_O < 0V$  | -50 mA                    |
| $V_O > V_{CC}$                                    | +50 mA                    |
| DC Output Source/Sink Current ( $I_{OH}/I_{OL}$ ) | ±50 mA                    |
| DC $V_{CC}$ or Ground Current                     | ±100 mA                   |
| Supply Pin ( $I_{CC}$ or Ground)                  |                           |
| Storage Temperature ( $T_{STG}$ )                 | -65°C to +150°C           |

**Recommended Operating Conditions** (Note 6)

|  |                 |
|--|-----------------|
| Power Supply (Note 7)  |                 |
| $V_{CCA}$  | 1.65V to 2.7V   |
| $V_{CCB}$  | 2.3V to 3.6V    |
| Input Voltage ( $V_I$ ) @ $\overline{OE}$ , $T/\overline{R}$ | 0V to $V_{CCB}$ |
| Input/Output Voltage ( $V_{I/O}$ )                           |                 |
| $A_n$  | 0V to $V_{CCA}$ |
| $B_n$  | 0V to $V_{CCB}$ |
| Output Current in $I_{OH}/I_{OL}$                            |                 |
| $V_{CCA} = 2.3V$ to 2.7V                                     | ±18 mA          |
| $V_{CCA} = 1.65V$ to 1.95V                                   | ±6 mA           |
| $V_{CCB} = 3.0V$ to 3.6V                                     | ±24 mA          |
| $V_{CCB} = 2.3V$ to 2.7V                                     | ±18 mA          |
| Free Air Operating Temperature ( $T_A$ )                     | -40°C to +85°C  |
| Minimum Input Edge Rate ( $\Delta V/\Delta t$ )              |                 |
| $V_{IN} = 0.8V$ to 2.0V, $V_{CC} = 3.0V$                     | 10 ns/V         |

**Note 4:** The "Absolute Maximum Ratings" are those values beyond which the safety of the device cannot be guaranteed. The device should not be operated at these limits. The parametric values defined in the Electrical Characteristics tables are not guaranteed at the absolute maximum ratings. The "Recommended Operating Conditions" table will define the conditions for actual device operation.

**Note 5:**  $I_O$  Absolute Maximum Rating must be observed.

**Note 6:** Unused inputs or I/O pins must be held HIGH or LOW. They may not float.

**Note 7:** Operation requires:  $V_{CCA} \leq V_{CCB}$

**DC Electrical Characteristics (1.65V <  $V_{CCA} \leq 1.95V$ , 2.3V <  $V_{CCB} \leq 2.7V$ )**

| Symbol            | Parameter  | Conditions  | $V_{CCA}$<br>(V)       | $V_{CCB}$<br>(V)   | Min                   | Max                  | Units |
|-------------------|--|---|------------------------|--------------------|-----------------------|----------------------|-------|
| $V_{IHA}$         | HIGH Level Input Voltage   | $A_n$   | 1.65-1.95              | 2.3-2.7            | $0.65 \times V_{CC}$  |                      | V     |
| $V_{IHB}$         |  | $B_n$ , $T/\overline{R}$ , $\overline{OE}$  | 1.65-1.95              | 2.3-2.7            | 1.6                   |                      | V     |
| $V_{ILA}$         | LOW Level Input Voltage  | $A_n$   | 1.6-1.95               | 2.3-2.7            |                       | $0.35 \times V_{CC}$ | V     |
| $V_{ILB}$         |  | $B_n$ , $T/\overline{R}$ , $\overline{OE}$  | 1.65-1.95              | 2.3-2.7            |                       | 0.7                  | V     |
| $V_{OHA}$         | HIGH Level Output Voltage  | $I_{OH} = -100 \mu A$<br>$I_{OH} = -6 \text{ mA}$   | 1.65-1.95<br>1.65      | 2.3-2.7<br>2.3-2.7 | $V_{CCA}-0.2$<br>1.25 |                      | V     |
| $V_{OHB}$         | HIGH Level Output Voltage  | $I_{OH} = -100 \mu A$<br>$I_{OH} = -18 \text{ mA}$  | 1.65-1.95<br>1.65-1.95 | 2.3-2.7<br>2.3     | $V_{CCB}-0.2$<br>1.7  |                      | V     |
| $V_{OLA}$         | LOW Level Output Voltage   | $I_{OL} = 100 \mu A$<br>$I_{OL} = 6 \text{ mA}$   | 1.65-1.95<br>1.65      | 2.3-2.7<br>2.3-2.7 |                       | 0.2<br>0.3           | V     |
| $V_{OLB}$         | LOW Level Output Voltage   | $I_{OL} = 100 \mu A$<br>$I_{OL} = 18 \text{ mA}$  | 1.65-1.95<br>1.65-1.95 | 2.3-2.7<br>2.3     |                       | 0.2<br>0.6           | V     |
| $I_I$             | Input Leakage Current @ $\overline{OE}$ , $T/\overline{R}$                 | $0V \leq V_I \leq 3.6V$   | 1.65-1.95              | 2.3-2.7            |                       | ±5.0                 | μA    |
| $I_{OZ}$          | 3-STATE Output Leakage   | $0V \leq V_O \leq 3.6V$<br>$\overline{OE} = V_{CCB}$<br>$V_I = V_{IH}$ or $V_{IL}$          | 1.65-1.95              | 2.3-2.7            |                       | ±10                  | μA    |
| $I_{OFF}$         | Power OFF Leakage Current  | $0 \leq (V_I, V_O) \leq 3.6V$   | 0                      | 0                  |                       | 10                   | μA    |
| $I_{CCA}/I_{CCB}$ | Quiescent Supply Current, per supply, $V_{CCA} / V_{CCB}$                  | $A_n = V_{CCA}$ or GND<br>$B_n, \overline{OE}$ , & $T/\overline{R} = V_{CCB}$ or GND        | 1.65-1.95              | 2.3-2.7            |                       | 20                   | μA    |
|                   |  | $V_{CCA} \leq A_n \leq 3.6V$<br>$V_{CCB} \leq B_n, \overline{OE}, T/\overline{R} \leq 3.6V$ | 1.65-1.95              | 2.3-2.7            |                       | ±20                  | μA    |
| $\Delta I_{CC}$   | Increase in $I_{CC}$ per Input, $B_n$ , $T/\overline{R}$ , $\overline{OE}$ | $V_I = V_{CCB} - 0.6V$  | 1.65-1.95              | 2.3-2.7            |                       | 750                  | μA    |
|                   | Increase in $I_{CC}$ per Input, $A_n$                                      | $V_I = V_{CCA} - 0.6V$  | 1.65-1.95              | 2.3-2.7            |                       | 750                  | μA    |

| DC Electrical Characteristics (1.65V < V <sub>CCA</sub> ≤ 1.95V, 3.0V < V <sub>CCB</sub> ≤ 3.6V) |   |  |  |                         |                         |                               |                        |          |
|--|---|--|--|-------------------------|-------------------------|-------------------------------|------------------------|----------|
| Symbol   | Parameter   |  | Conditions   | V <sub>CCA</sub><br>(V) | V <sub>CCB</sub><br>(V) | Min                           | Max                    | Units    |
| V <sub>IHA</sub>   | HIGH Level  | A <sub>n</sub>                                       |  | 1.65–1.95               | 3.0–3.6                 | 0.65 x V <sub>CC</sub>        |                        | V        |
| V <sub>IHB</sub>   | Input Voltage   | B <sub>n</sub> , T/ $\overline{R}$ , $\overline{OE}$ |  | 1.65–1.95               | 3.0–3.6                 | 2.0                           |                        | V        |
| V <sub>ILA</sub>   | LOW Level   | A <sub>n</sub>                                       |  | 1.65–1.95               | 3.0–3.6                 |                               | 0.35 x V <sub>CC</sub> | V        |
| V <sub>ILB</sub>   | Input Voltage   | B <sub>n</sub> , T/ $\overline{R}$ , $\overline{OE}$ |  | 1.65–1.95               | 3.0–3.6                 |                               | 0.8                    | V        |
| V <sub>OHA</sub>   | HIGH Level Output Voltage   |  | I <sub>OH</sub> = –100 μA<br>I <sub>OH</sub> = –6 mA   | 1.65–1.95<br>1.65       | 3.0–3.6<br>3.0–3.6      | V <sub>CCA</sub> –0.2<br>1.25 |                        | V        |
| V <sub>OHB</sub>   | HIGH Level Output Voltage   |  | I <sub>OH</sub> = –100 μA<br>I <sub>OH</sub> = –24 mA  | 1.65–1.95<br>1.65–1.95  | 3.0–3.6<br>3.0          | V <sub>CCA</sub> –0.2<br>2.2  |                        | V        |
| V <sub>OLA</sub>   | LOW Level Output Voltage  |  | I <sub>OL</sub> = 100 μA<br>I <sub>OL</sub> = 6 mA   | 1.65–1.95<br>1.65       | 3.0–3.6<br>3.0–3.6      |                               | 0.2<br>0.3             | V        |
| V <sub>OLB</sub>   | LOW Level Output Voltage  |  | I <sub>OL</sub> = 100 μA<br>I <sub>OL</sub> = 24 mA  | 1.65–1.95<br>1.65–1.95  | 3.0–3.6<br>3.0          |                               | 0.2<br>0.55            | V        |
| I <sub>I</sub>   | Input Leakage Current @ $\overline{OE}$ , T/ $\overline{R}$                                 |  | 0V ≤ V <sub>I</sub> ≤ 3.6V   | 1.65–1.95               | 3.0–3.6                 |                               | ±5.0                   | μA       |
| I <sub>OZ</sub>  | 3-STATE Output Leakage  |  | 0V ≤ V <sub>O</sub> ≤ 3.6V<br>OE* = V <sub>CCB</sub><br>V <sub>I</sub> = V <sub>IH</sub> or V <sub>IL</sub>  | 1.65–1.95               | 3.0–3.6                 |                               | ±10                    | μA       |
| I <sub>OFF</sub>   | Power Off Leakage Current   |  | 0 ≤ (V <sub>I</sub> , V <sub>O</sub> ) ≤ 3.6V  | 0                       | 0                       |                               | 10                     | μA       |
| I <sub>CCA</sub> /I <sub>CCB</sub>   | Quiescent Supply Current,<br>per supply, V <sub>CCA</sub> /V <sub>CCB</sub>                 |  | A <sub>n</sub> = V <sub>CCA</sub> or GND<br>B <sub>n</sub> , $\overline{OE}$ , & T/ $\overline{R}$ = V <sub>CCB</sub> or GND<br>V <sub>CCA</sub> ≤ A <sub>n</sub> ≤ 3.6V<br>V <sub>CCB</sub> ≤ B <sub>n</sub> , $\overline{OE}$ , T/ $\overline{R}$ ≤ 3.6V | 1.65–1.95<br>1.65–1.95  | 3.0–3.6<br>3.0–3.6      |                               | 20<br>±20              | μA<br>μA |
| ΔI <sub>CC</sub>   | Increase in I <sub>CC</sub> per Input, B <sub>n</sub> , T/ $\overline{R}$ , $\overline{OE}$ |  | V <sub>I</sub> = V <sub>CCB</sub> – 0.6V   | 1.65–1.95               | 3.0–3.6                 |                               | 750                    | μA       |
|  | Increase in I <sub>CC</sub> per Input, A <sub>n</sub>                                       |  | V <sub>I</sub> = V <sub>CCA</sub> – 0.6V   | 1.65–1.95               | 3.0–3.6                 |                               | 750                    | μA       |

| DC Electrical Characteristics (2.3V < V <sub>CCA</sub> ≤ 2.7V, 3.0V ≤ V <sub>CCB</sub> ≤ 3.6V) |   |  |  |                         |                         |                              |             |          |
|--|---|--|--|-------------------------|-------------------------|------------------------------|-------------|----------|
| Symbol   | Parameter   |  | Conditions   | V <sub>CCA</sub><br>(V) | V <sub>CCB</sub><br>(V) | Min                          | Max         | Units    |
| V <sub>IHA</sub>   | HIGH Level Input Voltage  | A <sub>n</sub>                                       |  | 2.3–2.7                 | 3.0–3.6                 | 1.6                          |             | V        |
| V <sub>IHB</sub>   |   | B <sub>n</sub> , T/ $\overline{R}$ , $\overline{OE}$ |  | 2.3–2.7                 | 3.0–3.6                 | 2.0                          |             | V        |
| V <sub>ILA</sub>   | LOW Level Input Voltage   | A <sub>n</sub>                                       |  | 2.3–2.7                 | 3.0–3.6                 |                              | 0.7         | V        |
| V <sub>ILB</sub>   |   | B <sub>n</sub> , T/ $\overline{R}$ , $\overline{OE}$ |  | 2.3–2.7                 | 3.0–3.6                 |                              | 0.8         | V        |
| V <sub>OHA</sub>   | HIGH Level Output Voltage   |  | I <sub>OH</sub> = –100 μA<br>I <sub>OH</sub> = –18 mA  | 2.3–2.7<br>2.3          | 3.0–3.6<br>3.0–3.6      | V <sub>CCA</sub> –0.2<br>1.7 |             | V        |
| V <sub>OHB</sub>   | HIGH Level Output Voltage   |  | I <sub>OH</sub> = –100 μA<br>I <sub>OH</sub> = –24 mA  | 2.3–2.7<br>2.3–2.7      | 3.0–3.6<br>3.0          | V <sub>CCB</sub> –0.2<br>2.2 |             | V        |
| V <sub>OLA</sub>   | LOW Level Output Voltage  |  | I <sub>OL</sub> = 100 μA<br>I <sub>OL</sub> = 18 mA  | 2.3–2.7<br>2.3          | 3.0–3.6<br>3.0–3.6      |                              | 0.2<br>0.6  | V        |
| V <sub>OLB</sub>   | LOW Level Output Voltage  |  | I <sub>OL</sub> = 100 μA<br>I <sub>OL</sub> = 24 mA  | 2.3–2.7<br>2.3–2.7      | 3.0–3.6<br>3.0          |                              | 0.2<br>0.55 | V        |
| I <sub>I</sub>   | Input Leakage Current @ $\overline{OE}$ , T/ $\overline{R}$                                 |  | 0V ≤ V <sub>I</sub> ≤ 3.6V   | 2.3–2.7                 | 3.0–3.6                 |                              | ±5.0        | μA       |
| I <sub>OZ</sub>  | 3-STATE Output Leakage @ A <sub>n</sub>   |  | 0V ≤ V <sub>O</sub> ≤ 3.6V<br>OE = V <sub>CCA</sub><br>V <sub>I</sub> = V <sub>IH</sub> or V <sub>IL</sub>   | 2.3–2.7                 | 3.0–3.6                 |                              | ±10         | μA       |
| I <sub>OFF</sub>   | Power OFF Leakage Current   |  | 0 ≤ (V <sub>I</sub> , V <sub>O</sub> ) ≤ 3.6V  | 0                       | 0                       |                              | 10          | μA       |
| I <sub>CCA</sub> /I <sub>CCB</sub>   | Quiescent Supply Current,<br>per supply, V <sub>CCA</sub> /V <sub>CCB</sub>                 |  | A <sub>n</sub> = V <sub>CCA</sub> or GND<br>B <sub>n</sub> , $\overline{OE}$ , & T/ $\overline{R}$ = V <sub>CCB</sub> or GND<br>V <sub>CCA</sub> ≤ A <sub>n</sub> ≤ 3.6V<br>V <sub>CCB</sub> ≤ B <sub>n</sub> , $\overline{OE}$ , T/ $\overline{R}$ ≤ 3.6V | 2.3–2.7<br>2.3–2.7      | 3.0–3.6<br>3.0–3.6      |                              | 20<br>±20   | μA<br>μA |
| ΔI <sub>CC</sub>   | Increase in I <sub>CC</sub> per Input, B <sub>n</sub> , T/ $\overline{R}$ , $\overline{OE}$ |  | V <sub>I</sub> = V <sub>CCB</sub> – 0.6V   | 2.3–2.7                 | 3.0–3.6                 |                              | 750         | μA       |
|  | Increase in I <sub>CC</sub> per Input, A <sub>n</sub>                                       |  | V <sub>I</sub> = V <sub>CCA</sub> – 0.6V   | 2.3–2.7                 | 3.0–3.6                 |                              | 750         | μA       |

## AC Electrical Characteristics

| Symbol                                 | Parameter                         | C <sub>L</sub> = 30 pF, R <sub>L</sub> = 500Ω, T <sub>A</sub> = -40°C to +85°C, |     |                                   |     |                                 |      | Units |
|--|-----------------------------------|---|-----|-----------------------------------|-----|---------------------------------|------|-------|
|  |                                   | V <sub>CCA</sub> = 1.65V to 1.95V   |     | V <sub>CCA</sub> = 1.65V to 1.95V |     | V <sub>CCA</sub> = 2.3V to 2.7V |      |       |
|  |                                   | V <sub>CCB</sub> = 2.3V to 2.7V   |     | V <sub>CCB</sub> = 3.0V to 3.6V   |     | V <sub>CCB</sub> = 3.0V to 3.6V |      |       |
|  |                                   | Min   | Max | Min                               | Max | Min                             | Max  |       |
| t <sub>PHL</sub> , t <sub>PLH</sub>    | Propagation Delay, A to B         | 0.8   | 5.5 | 0.6                               | 5.1 | 0.6                             | 4.0  | ns    |
| t <sub>PHL</sub> , t <sub>PLH</sub>    | Propagation Delay, B to A         | 1.5   | 5.8 | 1.5                               | 6.2 | 0.8                             | 4.4  | ns    |
| t <sub>PZL</sub> , t <sub>PZH</sub>    | Output Enable Time, OE to B       | 0.8   | 5.3 | 0.6                               | 5.1 | 0.6                             | 4.0  | ns    |
| t <sub>PZL</sub> , t <sub>PZH</sub>    | Output Enable Time, OE to A       | 1.5   | 8.3 | 1.5                               | 8.2 | 0.8                             | 4.6  | ns    |
| t <sub>PLZ</sub> , t <sub>PHZ</sub>    | Output Disable Time, OE to B      | 0.8   | 5.2 | 0.8                               | 5.6 | 0.8                             | 4.8  | ns    |
| t <sub>PLZ</sub> , t <sub>PHZ</sub>    | Output Disable Time, OE to A      | 0.8   | 4.6 | 0.8                               | 4.5 | 0.8                             | 4.4  | ns    |
| t <sub>osHL</sub><br>t <sub>osLH</sub> | Output to Output Skew<br>(Note 8) |   | 0.5 |                                   | 0.5 |                                 | 0.75 | ns    |

**Note 8:** Skew is defined as the absolute value of the difference between the actual propagation delay for any two separate outputs of the same device. The specification applies to any outputs switching in the same direction, either HIGH-to-LOW ( $t_{osHL}$ ) or LOW-to-HIGH ( $t_{osLH}$ ).

## Dynamic Switching Characteristics

| Symbol    | Parameter  | Conditions   | $V_{CCA}$<br>(V) | $V_{CCB}$<br>(V) | $T_A = 25^\circ\text{C}$ | Units |
|-----------|--|--|------------------|------------------|--------------------------|-------|
|           |  |  |                  |                  | Typical                  |       |
| $V_{OLP}$ | Quiet Output Dynamic Peak $V_{OL}$ ,<br>B to A   | $C_L = 30 \text{ pF}$ , $V_{IH} = V_{CC}$ , $V_{IL} = 0\text{V}$ | 1.8              | 2.5              | 0.25                     | V     |
|           |  |  | 1.8              | 3.3              | 0.25                     |       |
|           |  |  | 2.5              | 3.3              | 0.6                      |       |
| $V_{OLV}$ | Quiet Output Dynamic Peak $V_{OL}$ ,<br>A to B   | $C_L = 30 \text{ pF}$ , $V_{IH} = V_{CC}$ , $V_{IL} = 0\text{V}$ | 1.8              | 2.5              | 0.6                      | V     |
|           |  |  | 1.8              | 3.3              | 0.8                      |       |
|           |  |  | 2.5              | 3.3              | 0.8                      |       |
| $V_{OLV}$ | Quiet Output Dynamic Valley $V_{OL}$ ,<br>B to A | $C_L = 30 \text{ pF}$ , $V_{IH} = V_{CC}$ , $V_{IL} = 0\text{V}$ | 1.8              | 2.5              | -0.25                    | V     |
|           |  |  | 1.8              | 3.3              | -0.25                    |       |
|           |  |  | 2.5              | 3.3              | -0.6                     |       |
| $V_{OLV}$ | Quiet Output Dynamic Valley $V_{OL}$ ,<br>A to B | $C_L = 30 \text{ pF}$ , $V_{IH} = V_{CC}$ , $V_{IL} = 0\text{V}$ | 1.8              | 2.5              | -0.6                     | V     |
|           |  |  | 1.8              | 3.3              | -0.8                     |       |
|           |  |  | 2.5              | 3.3              | -0.8                     |       |
| $V_{OHV}$ | Quiet Output Dynamic Valley $V_{OH}$ ,<br>A to B | $C_L = 30 \text{ pF}$ , $V_{IH} = V_{CC}$ , $V_{IL} = 0\text{V}$ | 1.8              | 2.5              | 1.7                      | V     |
|           |  |  | 1.8              | 3.3              | 2.0                      |       |
|           |  |  | 2.5              | 3.3              | 2.0                      |       |
| $V_{OHV}$ | Quiet Output Dynamic Valley $V_{OH}$ ,<br>B to A | $C_L = 30 \text{ pF}$ , $V_{IH} = V_{CC}$ , $V_{IL} = 0\text{V}$ | 1.8              | 2.5              | 1.3                      | V     |
|           |  |  | 1.8              | 3.3              | 1.3                      |       |
|           |  |  | 2.5              | 3.3              | 1.7                      |       |

## Capacitance

| Symbol   | Parameter                     | Conditions   | $T_A = +25^\circ\text{C}$ | Units |
|----------|-------------------------------|--|---------------------------|-------|
|          |                               |  | Typical                   |       |
| $C_{IN}$ | Input Capacitance             | $V_{CCA} = 2.5\text{V}$ , $V_{CCB} = 3.3\text{V}$ , $V_I = 0\text{V}$ or $V_{CCA/B}$                         | 5                         | pF    |
| $C_{IO}$ | Input/Output Capacitance      | $V_{CCA} = 2.5\text{V}$ , $V_{CCB} = 3.3\text{V}$ , $V_I = 0\text{V}$ or $V_{CCA/B}$                         | 6                         | pF    |
| $C_{PD}$ | Power Dissipation Capacitance | $V_{CCA} = 2.5\text{V}$ , $V_{CCB} = 3.3\text{V}$ , $V_I = 0\text{V}$ or $V_{CCA/B}$<br>$f = 10 \text{ MHz}$ | 20                        | pF    |

## AC Loading and Waveforms

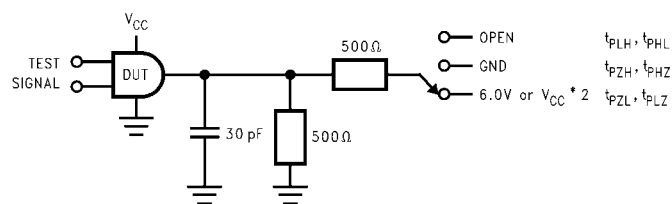


FIGURE 1. AC Test Circuit

| TEST               | SWITCH  |
|--------------------|---|
| $t_{PLH}, t_{PHL}$ | OPEN  |
| $t_{PZL}, t_{PLZ}$ | 6V at $V_{CC} = 3.3 \pm 0.3V$ ;<br>$V_{CC} \times 2$ at $V_{CC} = 2.5 \pm 0.2V; 1.8V \pm 0.15V$ |
| $t_{PZH}, t_{PHZ}$ | GND   |

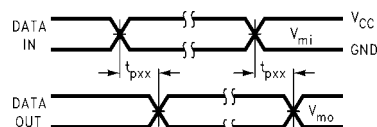


FIGURE 2. Waveform for Inverting and Non-inverting Functions  
 $t_R = t_F \leq 2.0 \text{ ns}$ , 10% to 90%

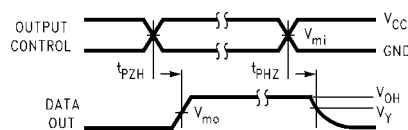


FIGURE 3. 3-STATE Output High Enable and Disable Times for Low Voltage Logic  
 $t_R = t_F \leq 2.0 \text{ ns}$ , 10% to 90%

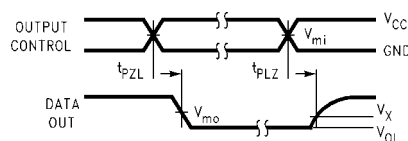
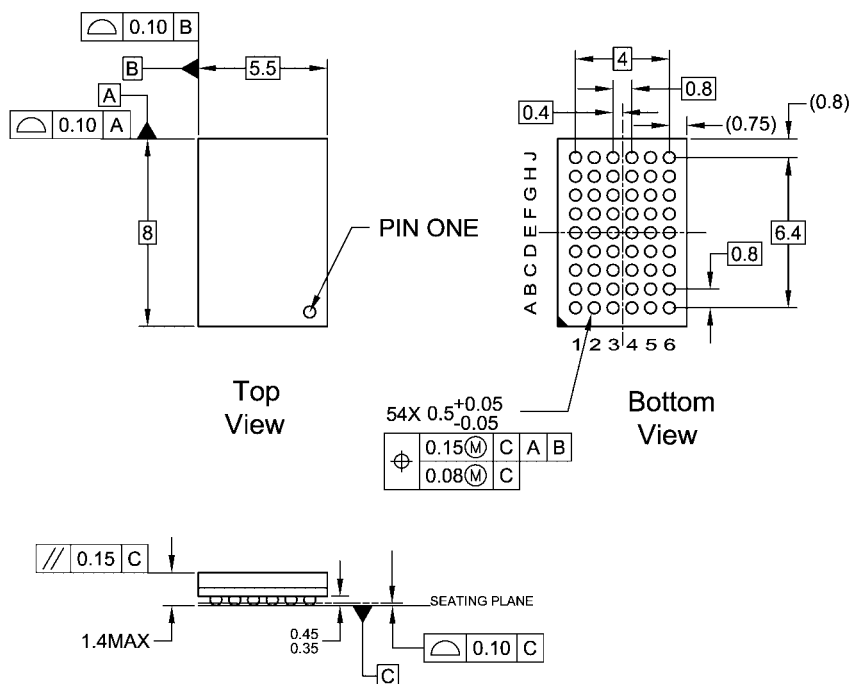


FIGURE 4. 3-STATE Output Low Enable and Disable Times for Low Voltage Logic  
 $t_R = t_F \leq 2.0 \text{ ns}$ , 10% to 90%

| Symbol   | $V_{CC}$        |                  |                  |
|----------|-----------------|------------------|------------------|
|          | $3.3V \pm 0.3V$ | $2.5V \pm 0.2V$  | $1.8V \pm 0.15V$ |
| $V_{mi}$ | 1.5V            | $V_{CC}/2$       | $V_{CC}/2$       |
| $V_{mo}$ | 1.5V            | $V_{CC}/2$       | $V_{CC}/2$       |
| $V_X$    | $V_{OL} + 0.3V$ | $V_{OL} + 0.15V$ | $V_{OL} + 0.15V$ |
| $V_Y$    | $V_{OH} - 0.3V$ | $V_{OH} - 0.15V$ | $V_{OH} - 0.15V$ |



# Physical Dimensions inches (millimeters) unless otherwise noted



## NOTES:

- THIS PACKAGE CONFORMS TO JEDEC MO-205
- ALL DIMENSIONS IN MILLIMETERS
- LAND PATTERN RECOMMENDATION: NSMD (Non Solder Mask Defined)  
.35MM DIA PADS WITH A SOLDERMASK OPENING OF .45MM CONCENTRIC TO PADS
- DRAWING CONFORMS TO ASME Y14.5M-1994

BGA54ArevD

**54-Ball Fine-Pitch Ball Grid Array (FBGA), JEDEC MO-205, 5.5mm Wide  
Package Number BGA54A**



ON Semiconductor and  are trademarks of Semiconductor Components Industries, LLC dba ON Semiconductor or its subsidiaries in the United States and/or other countries. ON Semiconductor owns the rights to a number of patents, trademarks, copyrights, trade secrets, and other intellectual property. A listing of ON Semiconductor's product/patent coverage may be accessed at [www.onsemi.com/site/pdf/Patent-Marking.pdf](http://www.onsemi.com/site/pdf/Patent-Marking.pdf). ON Semiconductor reserves the right to make changes without further notice to any products herein. ON Semiconductor makes no warranty, representation or guarantee regarding the suitability of its products for any particular purpose, nor does ON Semiconductor assume any liability arising out of the application or use of any product or circuit, and specifically disclaims any and all liability, including without limitation special, consequential or incidental damages. Buyer is responsible for its products and applications using ON Semiconductor products, including compliance with all laws, regulations and safety requirements or standards, regardless of any support or applications information provided by ON Semiconductor. "Typical" parameters which may be provided in ON Semiconductor data sheets and/or specifications can and do vary in different applications and actual performance may vary over time. All operating parameters, including "Typicals" must be validated for each customer application by customer's technical experts. ON Semiconductor does not convey any license under its patent rights nor the rights of others. ON Semiconductor products are not designed, intended, or authorized for use as a critical component in life support systems or any FDA Class 3 medical devices or medical devices with a same or similar classification in a foreign jurisdiction or any devices intended for implantation in the human body. Should Buyer purchase or use ON Semiconductor products for any such unintended or unauthorized application, Buyer shall indemnify and hold ON Semiconductor and its officers, employees, subsidiaries, affiliates, and distributors harmless against all claims, costs, damages, and expenses, and reasonable attorney fees arising out of, directly or indirectly, any claim of personal injury or death associated with such unintended or unauthorized use, even if such claim alleges that ON Semiconductor was negligent regarding the design or manufacture of the part. ON Semiconductor is an Equal Opportunity/Affirmative Action Employer. This literature is subject to all applicable copyright laws and is not for resale in any manner.

## PUBLICATION ORDERING INFORMATION

### LITERATURE FULFILLMENT:

Literature Distribution Center for ON Semiconductor  
19521 E. 32nd Pkwy, Aurora, Colorado 80011 USA  
**Phone:** 303-675-2175 or 800-344-3860 Toll Free USA/Canada  
**Fax:** 303-675-2176 or 800-344-3867 Toll Free USA/Canada  
**Email:** [orderlit@onsemi.com](mailto:orderlit@onsemi.com)

**N. American Technical Support:** 800-282-9855 Toll Free  
USA/Canada

**Europe, Middle East and Africa Technical Support:**  
Phone: 421 33 790 2910

**Japan Customer Focus Center**  
Phone: 81-3-5817-1050

**ON Semiconductor Website:** [www.onsemi.com](http://www.onsemi.com)

**Order Literature:** <http://www.onsemi.com/orderlit>

For additional information, please contact your local  
Sales Representative