



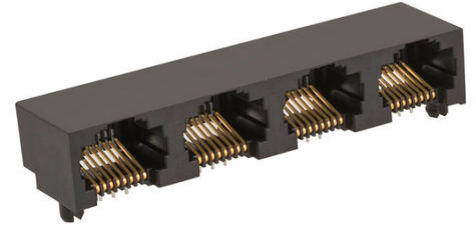
**Part Number :** [442480058](#)

**Product Description :** Modular Jack, Right-Angle, Low Profile, Inverted, 8/8, 4 Ports

**Series Number :** 44248

**Status :** Active

**Product Category :** Modular Jacks and Plugs



---

## Documents and Resources

### Drawings

[442480058\\_sd.pdf](#)

[PK-44248-004-001.pdf](#)

### 3D Models and Design Files

[STEP AP242](#)

[SOLIDWORKS](#)

[Creo](#)


### Specifications

[PS-43860-003-001.pdf](#)

---

## Product Environment Compliance

### Compliance

|                    |   |
|--------------------|---|
| GADSL/IMDS         | Compliant with Exemption 44; 34; 33   |
| China RoHS         |  per SJ/T 11365-2006 |
| EU ELV             | Not Relevant  |
| Low-Halogen Status | Not Low-Halogen per IEC 61249-2-21  |
| REACH SVHC         | Not Contained per D(2025)6375-DC (05 Nov 2025)  |
| EU RoHS            | Compliant per EU 2015/863   |

### Compliance Statements

- EU RoHS

- REACH SVHC
- Low-Halogen

#### Industry Documents

- IPC 1752A Class C
- IPC 1752A Class D
- Molex Product Compliance Declaration
- IEC-62474
- chemSHERPA (xml)

#### Substances of Interest

- PFAS

#### EU RoHS Certificate of Compliance

#### Additional Product Compliance Information

## Part Details

### General

|                           |  |
|---------------------------|--|
| Status                    | Active   |
| Category                  | Modular Jacks and Plugs  |
| Series                    | 44248  |
| Description               | Modular Jack, Right-Angle, Low Profile, Inverted, 8/8, 4 Ports |
| Comments                  | Industry Compatible  |
| Component Type            | PCB Jack   |
| Magnetic                  | No   |
| Performance Category      | 3  |
| Power over Ethernet (PoE) | N/A  |
| Product Name              | Modular Jack 8/8,RJ45  |
| UPC                       | 800753131347   |

### Agency

|     |         |
|-----|---------|
| CSA | LR19980 |
| UL  | E107635 |

### Electrical

|                               |               |
|-------------------------------|---------------|
| Current - Maximum per Contact | 1.5A          |
| Shielded                      | No            |
| Voltage - Maximum             | 150V AC (RMS) |

## Physical

|                                |                          |
|--------------------------------|--------------------------|
| Boot Color                     | N/A                      |
| Color - Resin                  | Black                    |
| Durability (mating cycles max) | 500                      |
| Flammability                   | 94V-0                    |
| Inverted / Top Latch           | Yes                      |
| Jack Height                    | 13.21mm                  |
| Lightpipes/LEDs                | None                     |
| Material - Metal               | Phosphor Bronze          |
| Material - Plating Mating      | Gold                     |
| Material - Plating Termination | Tin                      |
| Material - Resin               | Polyester                |
| Net Weight                     | 6.308/g                  |
| Orientation                    | Right Angle (Side Entry) |
| Packaging Type                 | Tray                     |
| Panel Mount                    | With Flange              |
| PCB Locator                    | Yes                      |
| PCB Retention                  | Yes                      |
| PCB Thickness - Recommended    | 1.57mm                   |
| Pitch - Mating Interface       | 1.02mm                   |
| Pitch - Termination Interface  | 1.02mm                   |
| Plating min - Mating           | 1.270µm                  |
| Plating min - Termination      | 2.540µm                  |
| Port Configuration             | 1x4                      |
| Positions / Loaded Contacts    | 8/8                      |
| Temperature Range - Operating  | -40° to +85°C            |
| Termination Interface Style    | Through Hole             |
| Waterproof / Dustproof         | No                       |
| Wire/Cable Type                | N/A                      |

## Solder Process Data

|                              |      |
|------------------------------|------|
| Max-Duration                 | 5    |
| Lead-Free Process Capability | WAVE |
| Max-Cycle                    | 1    |
| Max-Temp                     | 260  |

---

This document was generated on May 25, 2026