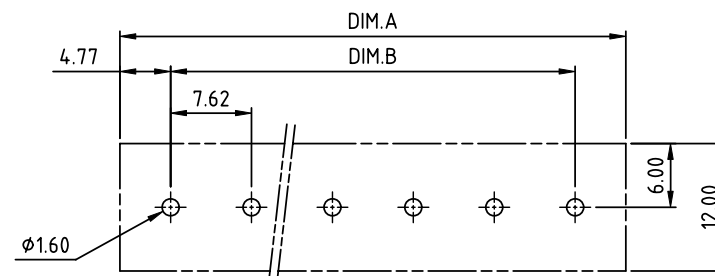
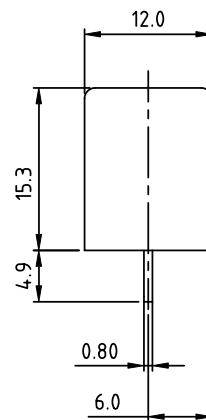
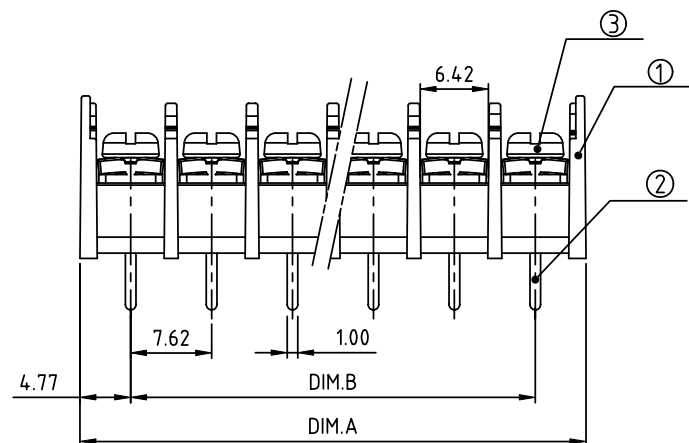
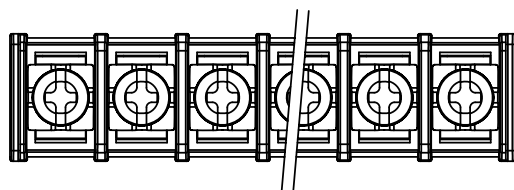


| PRODUCT NUMBER | PITCH |
|----------------|---------|
| YK303xx0x0J0G | 7.62 mm |



RECOMMENDED P.C.B LAYOUT
TOP VIEW

MATERIALS ELECTRICAL

RATED VOLTAGE & CURRENT:

300 V, 15 A

WITHSTAND VOLTAGE:

AC 2000 V/Min

INSULATION RESISTANCE:

1000 MΩ OR MORE AT DC 500 V

OPERATING TEMPERATURE RANGE:

-40 °C ~ +115 °C

SCREW TORQUE VALUE:

5.2 Lb-In.

WIRE RANGE:

14 ~ 22 AWG

1) HOUSING:

THERMOPLASTIC, UL 94 V-0 BLACK

2) TERMINAL:

BRASS, 0.8t

3) TERMINAL SCREWS:

STEEL, M3

DIMENSION

| | |
|-------|-----------------|
| Dim A | (N-1)×7.62+9.54 |
| Dim B | (N-1)×7.62 |

N=Number of poles

| Poles | Tolerance |
|---------|-----------|
| 2p-4p | ±0.20 |
| 5p-10p | ±0.30 |
| 11p-16p | ±0.40 |
| 17p-20p | ±0.50 |

PART NO.: YK 303xx 0 x 0 J0G

No. of poles
02 2 poles
03 3 poles
...
20 20 poles

Plated

| Code | Terminal | Screw |
|------|----------|-------|
| 0 | G/F | G/F |
| 1 | G/F | Zinc |
| 2 | Tin | G/F |
| 3 | Tin | Zinc |

RoHS compliant
(lead<4%)
In copper Alloy

| mat'l. code | | | | surface ASME Y14.5 ✓ | tolerance ASME Y14.5 | projection | product family | | | |
|-------------|----------|----|----|-------------------------|---------------------------------------|------------|------------------|--|--|--|
| ltr | ecn | no | dr | date | tolerances unless otherwise specified | angles | TERMINAL BLOCK | | | |
| | | | | | X±0.5 | MM | title | | | |
| | | | | | X.X±0.3 | | TERMINAL BLOCK | | | |
| | | | | | X°±1° | | BARRIER TYPE | | | |
| | | | | | dr HANKE FENG 060914 | scale | dwg no | | | |
| | | | | | enr HANKE FENG 060914 | | YK303xx0x0J0G | | | |
| | | | | | chr HANKE FENG 060914 | | sheet 1 of 1 | | | |
| | | | | | appd SHI JUN 060914 | | size | | | |
| | | | | | | | A4 | | | |
| sheet index | revision | A | | | | | type | | | |
| | sheet | 1 | | | | | CUSTOMER Drawing | | | |