



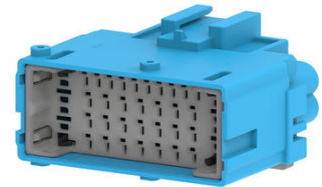
**Part Number :** [2159580264](#)

**Product Description :** MX-DaSH Standard Male Connector Assembly, 35 Circuits, Keying Option D, Blue

**Series Number :** 215958

**Status :** Active

**Product Category :** Connector Housings



---

## Documents and Resources

### Drawings

[2159580264\\_sd.pdf](#)

[2159580150-PK-000.pdf](#)

### 3D Models and Design Files

[STEP AP242](#)

[SOLIDWORKS](#)

[Creo](#)

### Specifications

[2159580000-AS-000.pdf](#)

[2159580000-PS-000.pdf](#)

---

## Product Environment Compliance

### Compliance

GADSL/IMDS	Not Reviewed
China RoHS	Not Relevant
EU ELV	Compliant per 2000/53/EC
Low-Halogen Status	Low-Halogen per IEC 61249-2-21
REACH SVHC	Not Contained per D(2024)6225-DC (07 Nov 2024)
EU RoHS	Compliant per EU 2015/863

### Compliance Statements

- EU RoHS
- REACH SVHC
- Low-Halogen

## Industry Documents

- IPC 1752A Class C
- IPC 1752A Class D
- Molex Product Compliance Declaration
- IEC-62474
- chemSHERPA (xml)

## Substances of Interest

- PFAS

## EU RoHS Certificate of Compliance

## Additional Product Compliance Information

---

## Part Details

### General

Status	Active
Category	Connector Housings
Series	215958
Description	MX-DaSH Standard Male Connector Assembly, 35 Circuits, Keying Option D, Blue
Application	Power, Wire-to-Wire
Product Name	MX-DaSH
Type	Static
UPC	196823255663

### Physical

Circuits (maximum)	35
Color - Resin	Blue
Gender	Plug
Glow-Wire Capable	No
Keying to Mating Part	Yes
Lock to Mating Part	Yes
Material - Resin	Polybutylene Terephthalate (PBT)
Net Weight	18.050/g
Number of Rows	4
Packaging Type	Partitioned Carton
Panel Mount	No

Pitch - Mating Interface	3.50mm, 2.50mm
Polarized to Mating Part	Yes
Stackable	No
Temperature Range - Operating	-40° to +125°C

---

## Mates With / Use With

### Mates with Part(s)

Description	Part Number
MX-DaSH Standard Female Connector Assembly, 35 Circuits, Keying Option D, Blue	<u>2159580164</u>

### Use with Part(s)

Description	Part Number
Use With	1.20mm AK Male Terminals, 2.80mm Male Terminals

---

This document was generated on Apr 22, 2026