


10-565997-753		DOCUMENT NO	
SHEET 1 OF 1		REV. A	
REVISIONS			
LTR	DESCRIPTION	DATE	
A	INITIAL RELEASE		

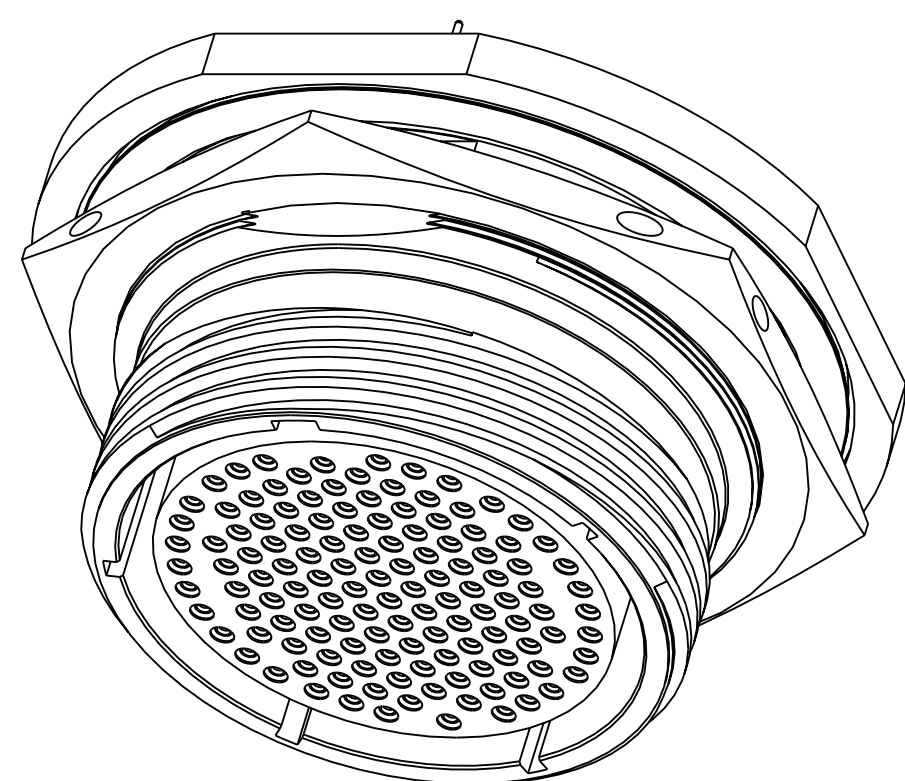
KIT PART NUMBER	CONNECTOR PART NUMBER	KIT TYPE	PCB CONTACT PART NUMBER	CONTACTS QTY.	MS REF NUMBER	CAP/CONTAINER PROTECTION
10-565997-753N	88-565759-35S	II 	10-497699-015 (PRETINNED)	128	D38999/24WJ35BN	10-576238-002 10-576237-002
10-565997-753A	88-565759-35H				D38999/24WJ35BA	
10-565997-753B	88-565759-35J				D38999/24WJ35BB	
10-565997-753C	88-565759-35L				D38999/24WJ35BC	
10-565997-753D	88-565759-35N				D38999/24WJ35BD	
10-565997-753E	88-565759-35T				D38999/24WJ35BE	

FOR UNIT ILLUSTRATION AND DIMENSIONAL DATA  
SEE 10-536197-DS TYPE 1

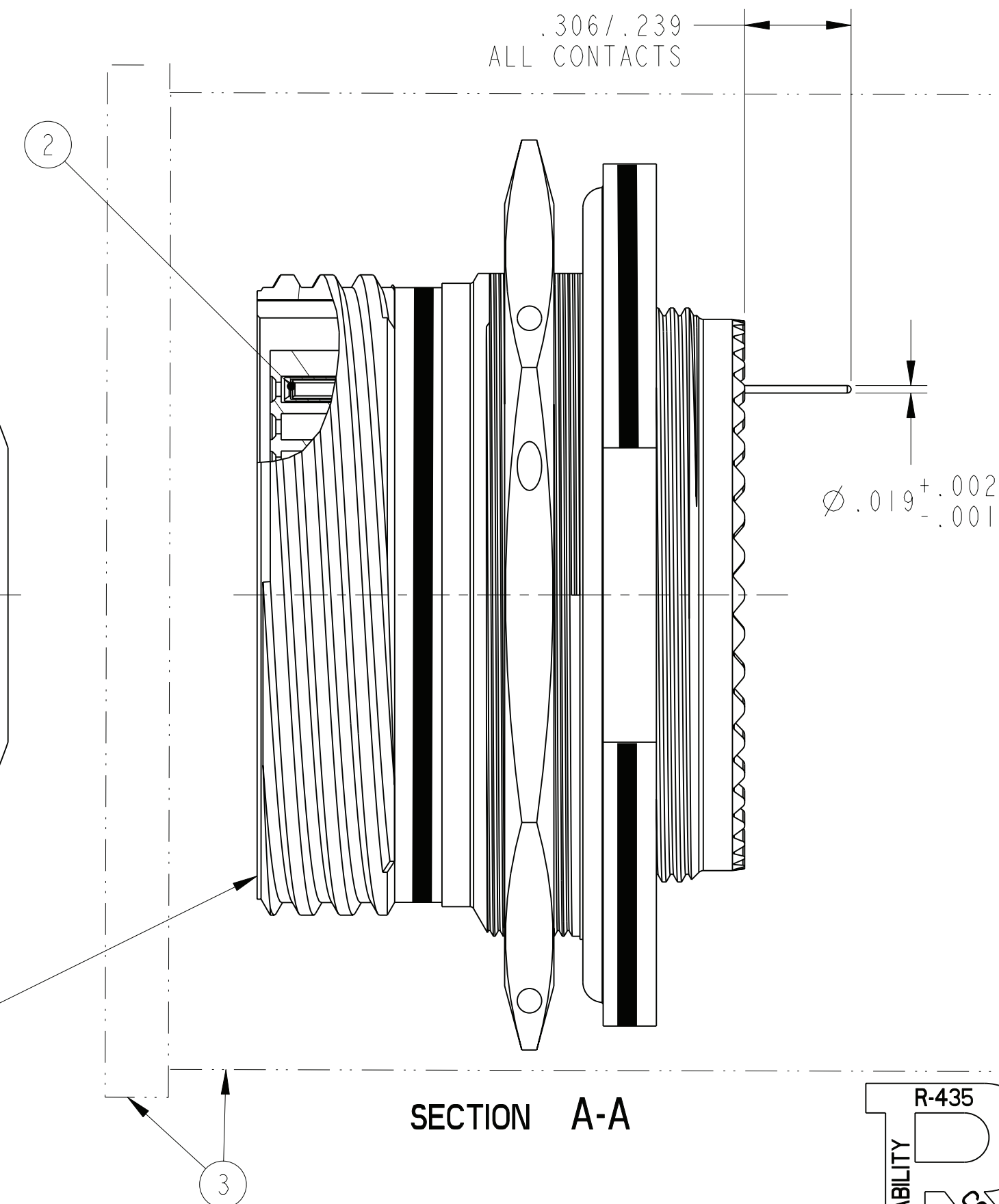
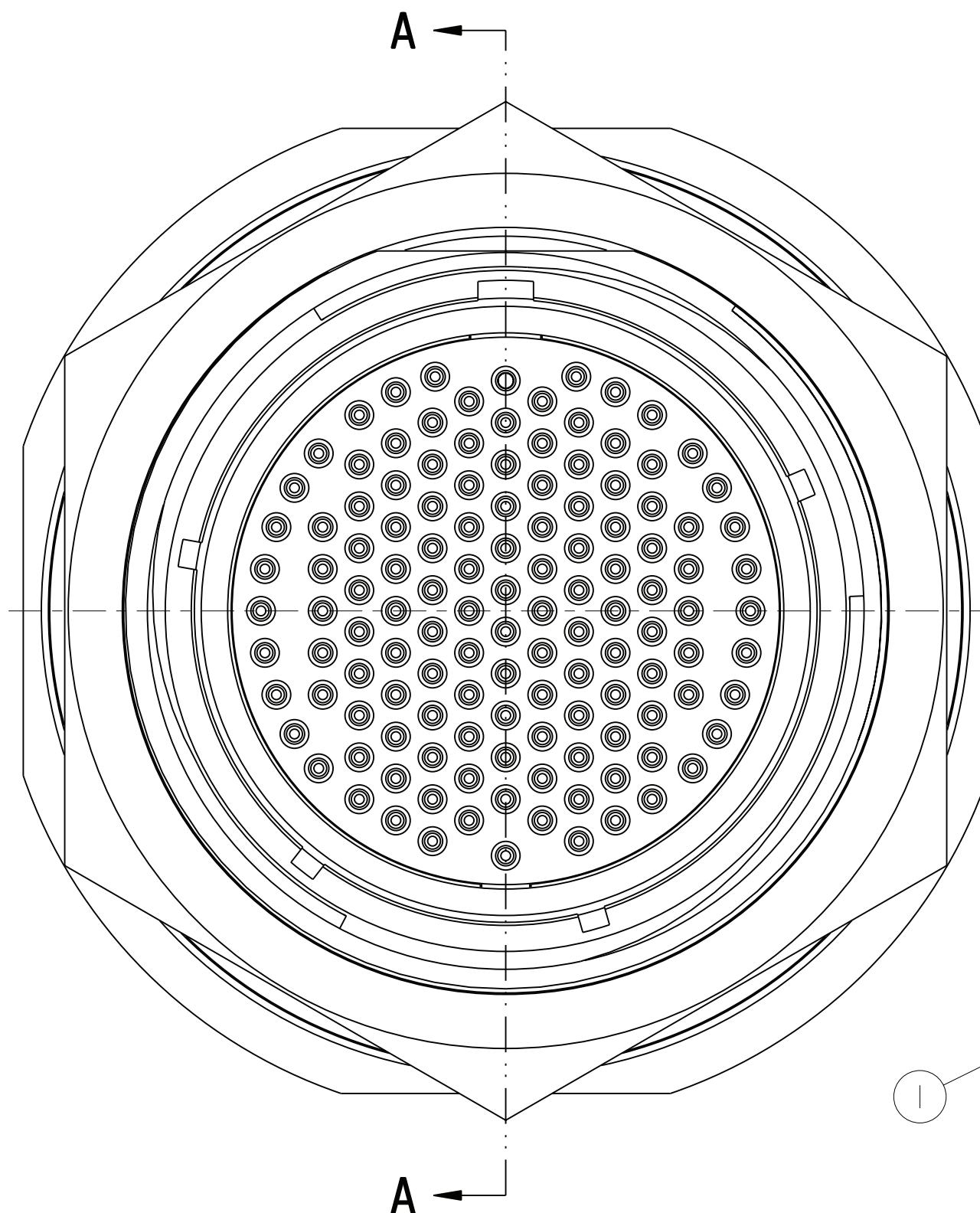
ALTERNATE  
SHELL ROTATION

CONNECTOR  
LESS STAMPING  
SEE NOTE 4  
FOR REQUIRED STAMPING

-SFF NOTE 1



SCALE 2



SECTION A-A

**R-435**  
**RELIABILITY**  
**CONTROL**

5. AFTER CONTACTS HAVE BEEN INSTALLED, PLACE CONNECTOR INTO CONTAINER AND CAP. TO INSURE CAP LOCATION, APPLY TAPE IF NEEDED. CARE MUST BE TAKEN NOT TO BEND THE CONTACTS.
4. STAMP "AMPHENOL", PART NUMBER, DATE CODE (9-3895), AND LOT NUMBER PER 9-5788  
EXAMPLE:  
AMPHENOL 10-565997-753B 0844 001000
3. PROCESS SPEC.:  
SPECIAL CONTROL 9-6000-2  
PROCESS SHEET CONTROL 9-4796  
9-3895, 9-5788
2. PACKAGE PER PRODUCTION PROCESS SHEET
1. KIT TYPE I CONTACTS ARE SHIPPED UNASSEMBLED.  
KIT TYPE II CONTACTS ARE SHIPPED ASSEMBLED IN CONNECTOR.

NOTES:

THE USE OF THIS DOCUMENT IS UNLIMITED.  
HOWEVER, DOCUMENTS REFERENCED HEREON  
MAY CONTAIN LIMITED RIGHTS DATA.


RELEASED / Nov . 05 2008, 08:40 AM

10-565997-753

SHEET 1 OF 1

REV  
A

N/A	PRO/ENGINEER INFORMATION
N/A	Pro/e Model Used: 10-565997-750.ASSEMB
NEXT ASSEMBLY	Drawing Name: 10-565997-753

<p>UNLESS OTHERWISE SPECIFIED</p>	<p>SPECIFICATIONS</p>
<p>LINEAR DIMENSIONS ARE IN INCHES TOLERANCES:</p> <p>.XXXX = <math>\pm 0.0005</math>    ANGLES = <math>\pm 2^\circ</math>          .XXX = <math>\pm 0.010</math>          .XX = <math>\pm 0.03</math>          .X = <math>\pm .1</math></p>	<p>MATERIAL SPEC.</p> <p>N/A</p>
<p>-----</p> <p>DIM. &amp; TOL. PER ASME Y14.5M;          DRP PER MIL-DTL-31000;          OTHER AmphenoI Stds. PER 9-3800</p>	<p>PROCESS SPEC</p> <p>SEE NOTE 3</p>
<p> LEGENDS:          =FLAG NOTE CALL OUT          REFERENCE ONLY</p>	

3	I	SEE COLUMN	CAP/CONTAINER	5
2		SEE COLUMN	CONTACT	
1	I	SEE COLUMN	CONNECTOR	
POS	QTY	PART NUMBER	DESCRIPTION	NOTE
PARTS LIST				
APPROVALS		DATE	<b>AMPHENOL CORPORATION</b> 40-60 DELAWARE AVENUE SIDNEY, N.Y. 13838	
PREPARED BY	D. ALGER	29-OCT-08	KIT, CONNECTOR TYPE MS AB-STAMPING, TV D38999/24WJ35B( )	
ENGINEER IN CHARGE	D. FREAR			
DESIGN MANAGER	E. SHEPLER			
DESIGN ACTIVITY GROUP	MILAERO			
THIRD ANGLE PROJECTION			SIZE	REV.
			C	A
			CAGE CODE	DOCUMENT NO.
			77820	10-565997-753
			SCALE: 1.0	REF: 88-565750/759
			SHEET 1 OF 1	