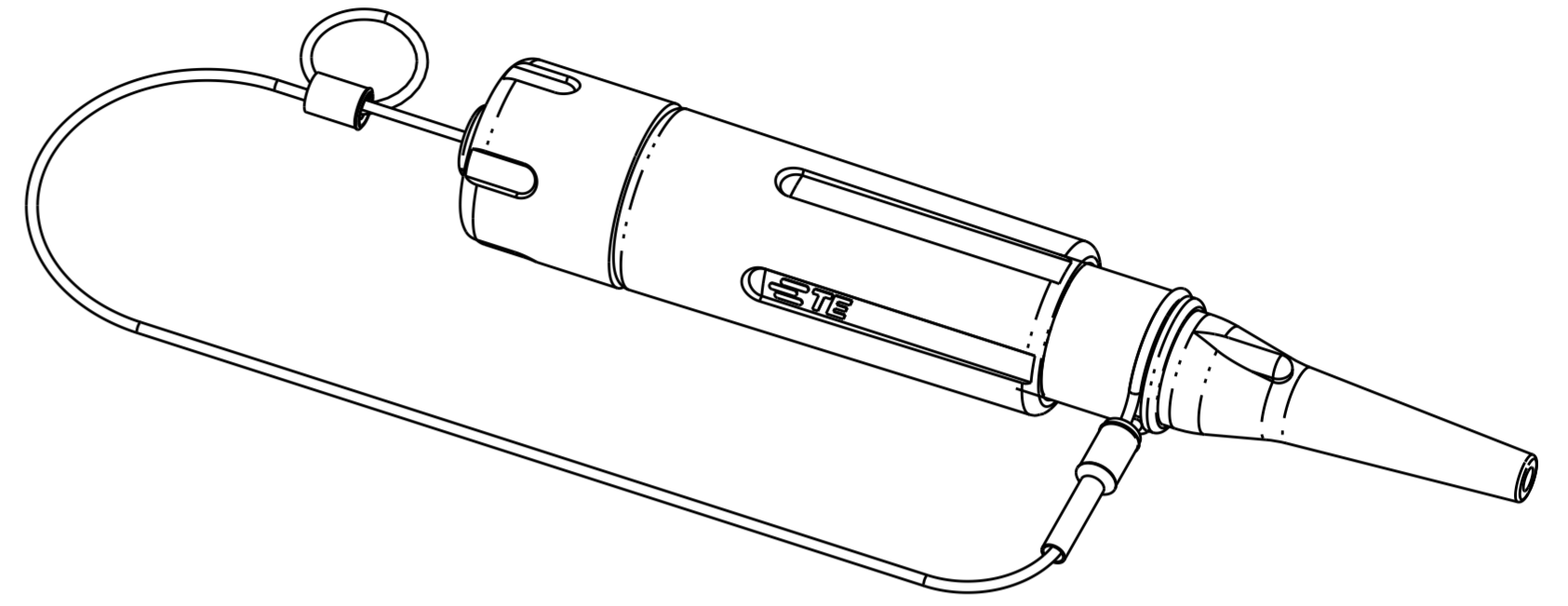


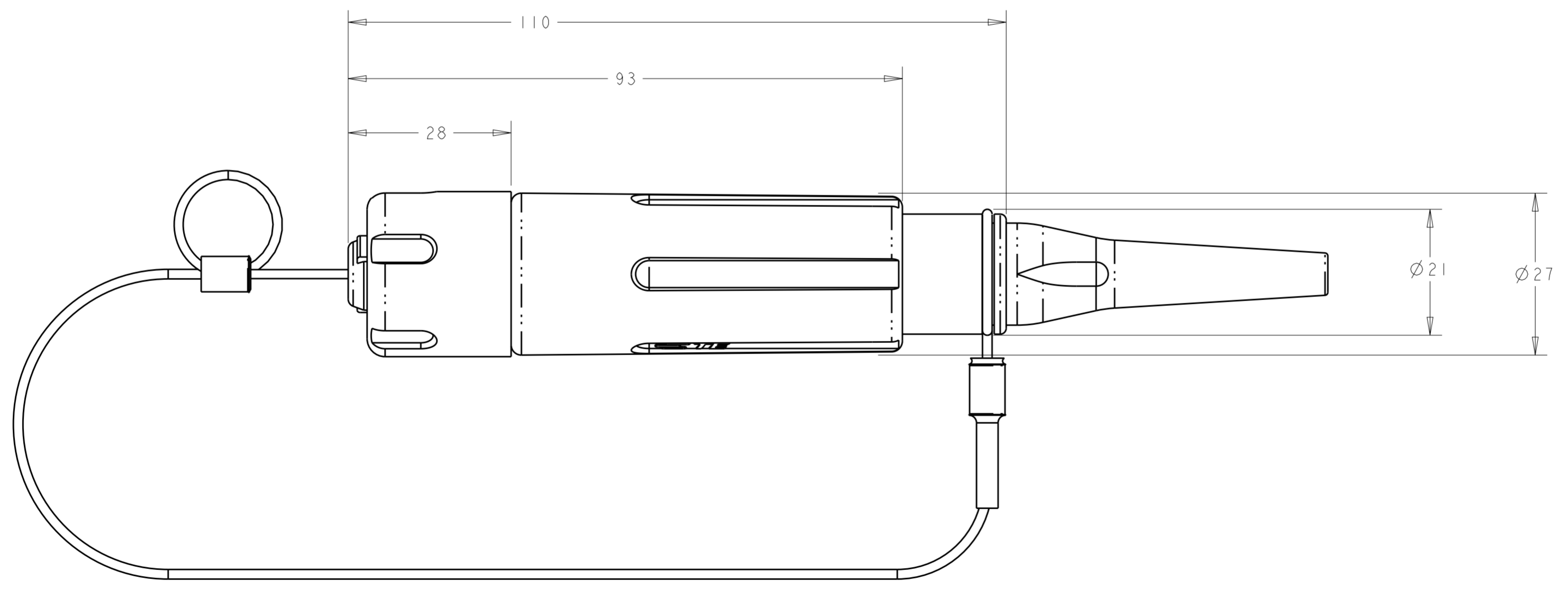
THIS DRAWING IS UNPUBLISHED. RELEASED FOR PUBLICATION 20
 © COPYRIGHT 20 BY - ALL RIGHTS RESERVED.

REVISIONS					
P	LTR	DESCRIPTION	DATE	DWN	APVD
J		ECR-15-008603	13JUL2015	KG	DW
J1		ECR-18-015599	26OCT2018	LN	DW

1. SHOWN ASSEMBLED FOR REFERENCE ONLY.
SHIPPED LOOSE PIECE AS SHOWN ON SHEET 2.
PACKAGED AS SHOWN ON SHEET 3.
2. ALL ASSEMBLY DIMENSIONS ARE FOR REFERENCE ONLY.
3. SINGLEMODE 1310/1550nm, 1-CHANNEL, FOR TERMINATION
TO 3.4mm FIBER-IN-STEEL-TUBE STEEL-ARMORED FIBER OPTIC CABLE.



SCALE 1:1



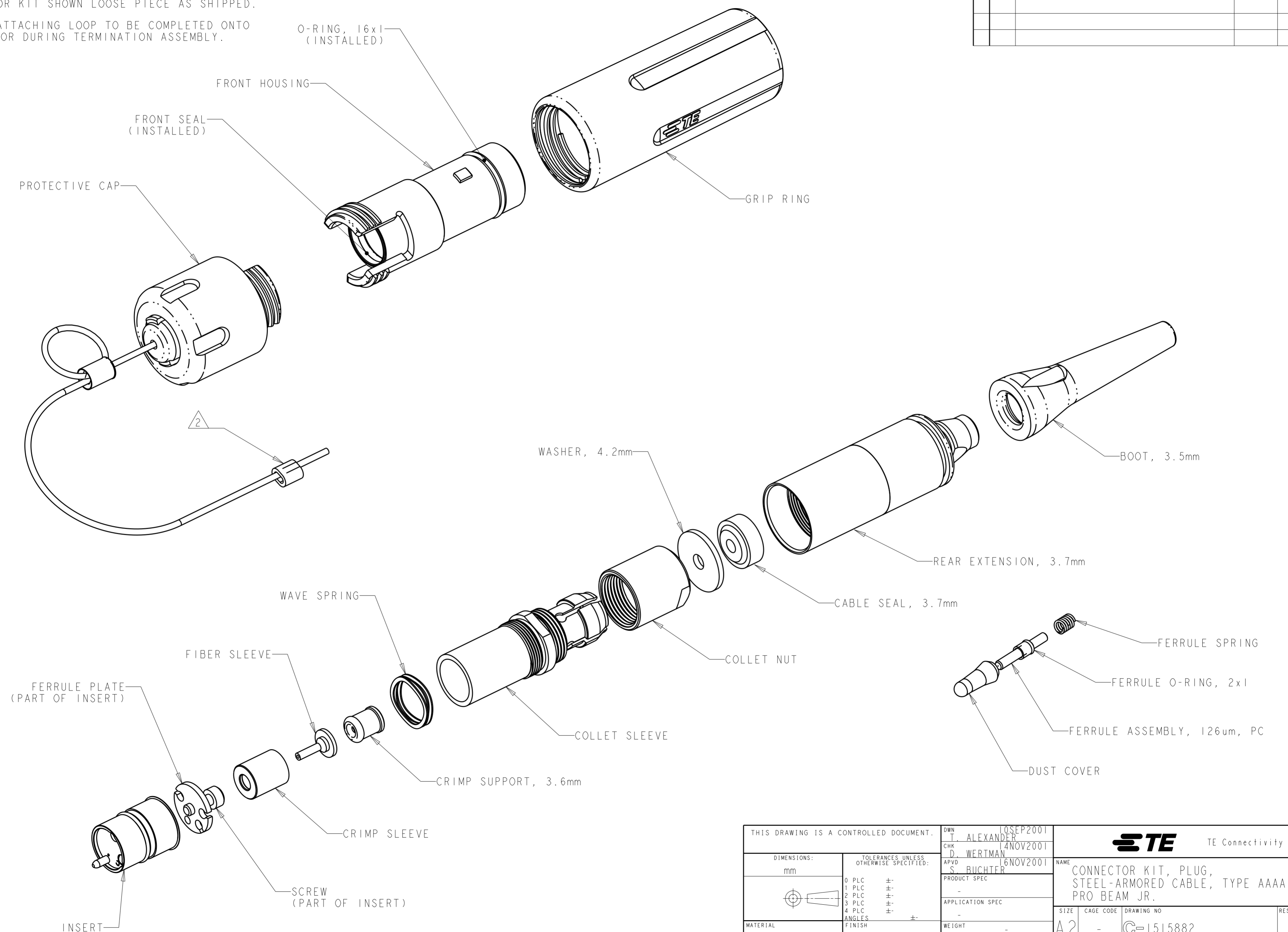
1515882-1
PART NUMBER

THIS DRAWING IS A CONTROLLED DOCUMENT.		DWN T. ALEXANDER 10SEP2001	TE Connectivity	
DIMENSIONS: mm		CHK D. WERTMAN 14NOV2001		
TOLERANCES UNLESS OTHERWISE SPECIFIED:		APVD S. BUCHTER 16NOV2001	NAME CONNECTOR KIT, PLUG, STEEL-ARMORED CABLE, TYPE AAAA, PRO BEAM JR.	
0 PLC ± 1 PLC ± 2 PLC ± 3 PLC ± 4 PLC ± ANGLES ± FINISH		PRODUCT SPEC -	SIZE A2	CAGE CODE -
MATERIAL -		APPLICATION SPEC -	DRAWING NO G-1515882	RESTRICTED TO -
-		WEIGHT -	SCALE 3:2 SHEET 1 OF 2 REV J1	
-		CUSTOMER DRAWING		

THIS DRAWING IS UNPUBLISHED. RELEASED FOR PUBLICATION 20
 © COPYRIGHT 20 BY - ALL RIGHTS RESERVED.

REVISIONS				
P	LTR	DESCRIPTION	DATE	APVD
-	-	SEE SHEET 1	-	-

1. CONNECTOR KIT SHOWN LOOSE PIECE AS SHIPPED.
 2. TETHER ATTACHING LOOP TO BE COMPLETED ONTO CONNECTOR DURING TERMINATION ASSEMBLY.



THIS DRAWING IS A CONTROLLED DOCUMENT.		DWN T. ALEXANDER 10SEP2001	STE TE Connectivity	
		CHK D. WERTMAN 14NOV2001		
		APVD S. BUCHTER 16NOV2001	NAME CONNECTOR KIT, PLUG, STEEL-ARMORED CABLE, TYPE AAAA, PRO BEAM JR.	
DIMENSIONS: mm		PRODUCT SPEC -	SIZE A2	CAGE CODE -
TOLERANCES UNLESS OTHERWISE SPECIFIED:		APPLICATION SPEC -	DRAWING NO. C-1515882	RESTRICTED TO -
0 PLC ±		WEIGHT -	SCALE 3:2	SHEET 2 OF 2
1 PLC ±		CUSTOMER DRAWING	REV J1	
2 PLC ±				
3 PLC ±				
4 PLC ±				
ANGLES ±				
FINISH -				