

MICRO SWITCH

FREEPORT, ILLINOIS, U.S.A.
A DIVISION OF HONEYWELL

FED. MFG. CODE 91929

SWITCH - ENCLOSED

CATALOG LISTING
41EN1-6

MILITARY STANDARD
MS 24420-1

41EN1-6

M

DRAWING
NUMBER

3833
3833637

ISSUE

REPLACES

RELEASE NO. SR-4671

CHECK

REVISIONS

A	NEW	CO44635	14 NOV 78
B	CO47573	11 AUG 80	11 AUG 80
C	CO49806	25 SEP 81	25 SEP 81
D	CO57370	16 MAY 85	16 MAY 85
E	CO59223	27 MAR 86	27 MAR 86
F	CO75787-C	11 MAY 94	11 MAY 94

CHECK

CHECK

CHECK

CHECK

CHECK

CHECK

THIS DRAWING COVERS A PROPRIETARY ITEM AND IS THE PROPERTY OF MICRO SWITCH, A DIVISION OF HONEYWELL. THIS DRAWING IS NOT TO BE COPIED OR USED WITHOUT THE APPROVAL OF MICRO SWITCH.

THIRD ANGLE PROJECTION

SCALE FULL

DO NOT SCALE PRINT

TOLERANCES
APPLY TO DESIGN UNITS. CONVERSIONS ARE ONLY FOR REFERENCE. UNLESS NOTED, TOLERANCES ARE 2

NO PLACES	ONE PLACE	TWO PLACES	THREE PLACES	ANGLES
DIM.	DIM.	DIM.	DIM.	DIM.
IN	IN	IN	IN	IN
1/4	0.47/016	0.157/008	0.67/005	0.367/015
1/16	0.157/008	0.157/008	0.157/008	0.157/008

DESIGN UNITS

RAW MATERIAL - COMMERCIAL STANDARD
MICRO SWITCH STANDARDS APPLY
DIMENSIONS ARE TO BE MET BEFORE
PROTECTIVE COATINGS ARE APPLIED

WEIGHT .52 LB

CHARACTERISTICS

OPERATING TORQUE ----- 3 IN-LB MAX

PRETRAVEL
DIFFERENTIAL TRAVEL
OVERTRAVEL
FREE POSITION

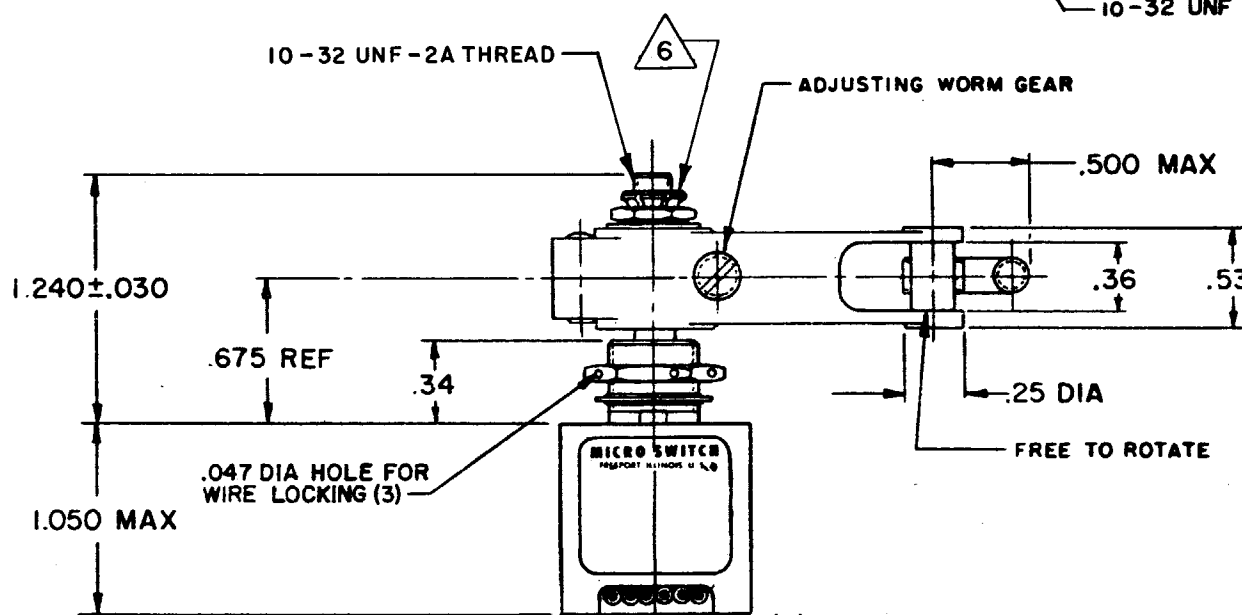
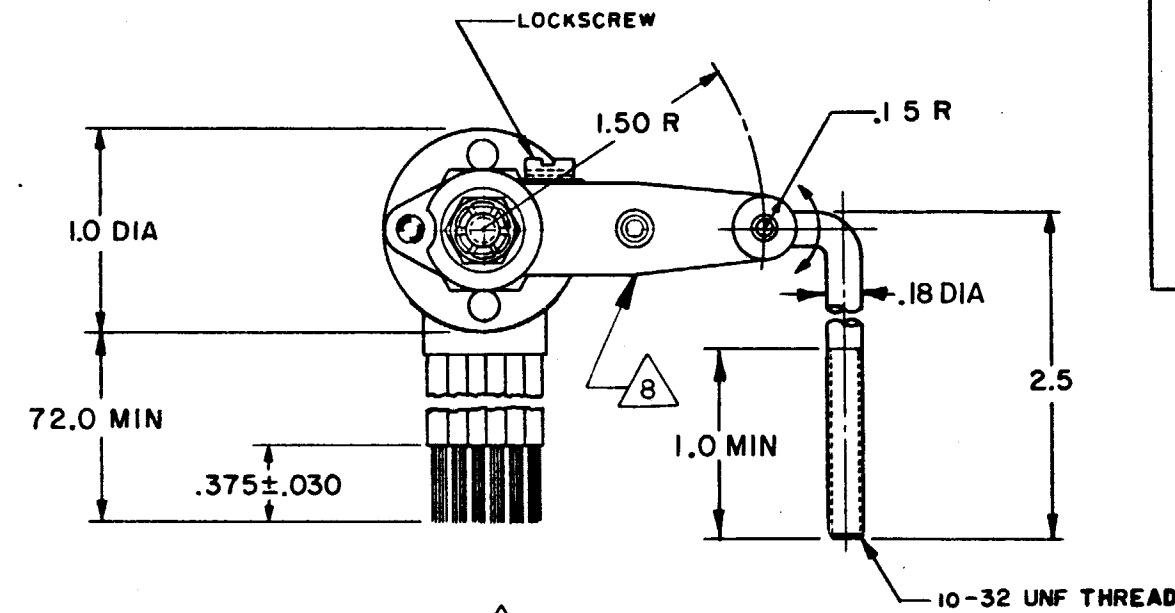
SEE DETAIL

ELECTRICAL DATA

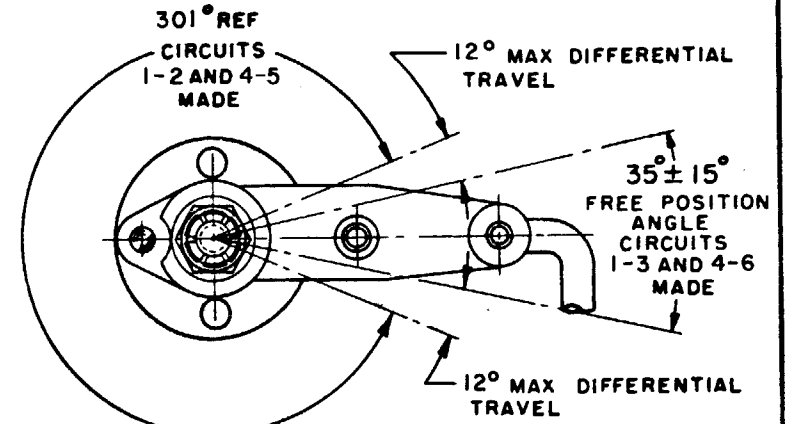
CONTACT ARRANGEMENT

SPDT (2)

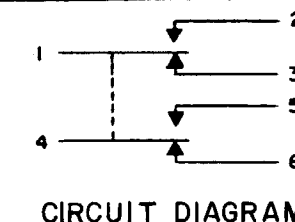
LOAD	SEA LEVEL	50,000 FT.
RES	4	4
IND	3	1
MOTOR	4	4
LAMP	2.4	2.4



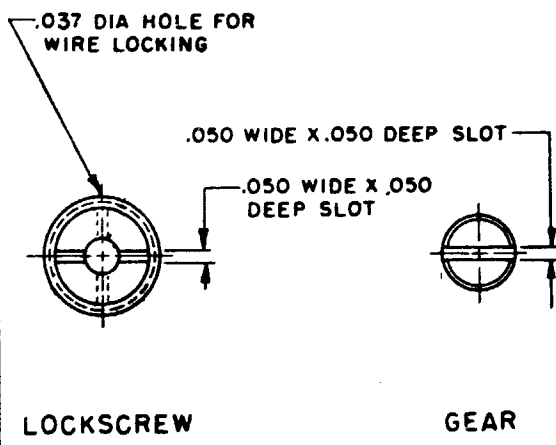
(6) NO. 20 WIRE LEAD PER MIL-W-22759/7 MARKED WITH CIRCUIT IDENTIFICATION AND WIRE GAGE (1-20, 2-20, ETC) PER MIL-W-5088



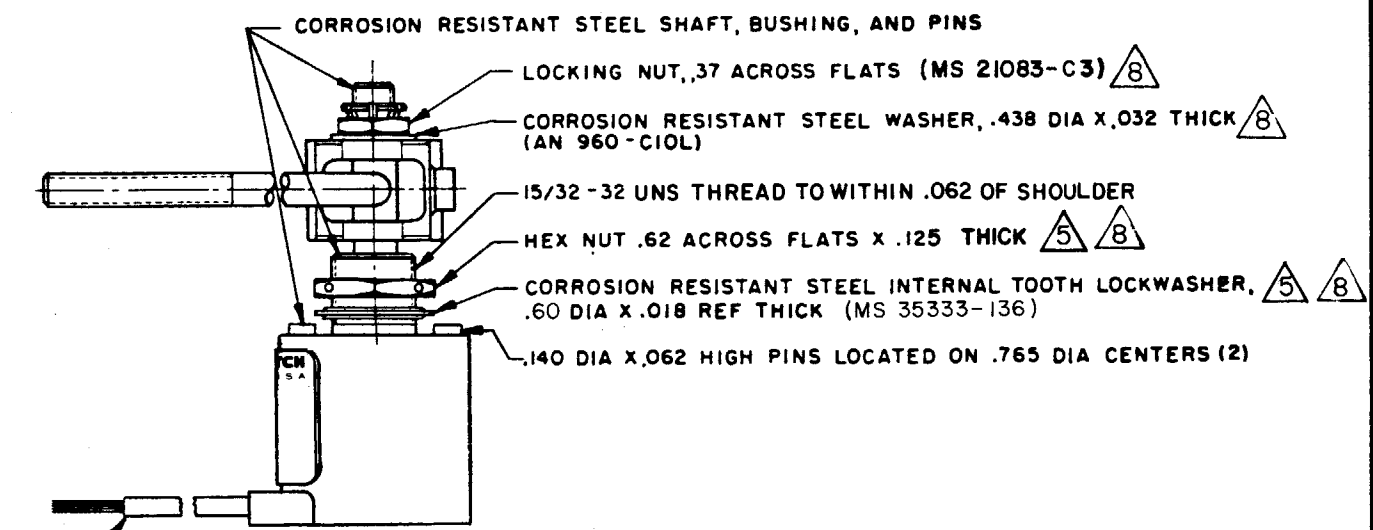
CHARACTERISTICS



CIRCUIT DIAGRAM



LEVER MAY BE ADJUSTED FOR AN INFINITE NUMBER OF POSITIONS THRU 360°. ADJUSTMENT IS MADE BY LOOSENING THE LOCKING NUT AND THEN THE LOCKSCREW AND TURNING GEAR UNTIL LEVER IS IN DESIRED POSITION. LOCKSCREW AND LOCKNUT ON SHAFT IS THEN TIGHTENED TO POSITIVELY LOCK LEVER IN POSITION.
LEVER ADJUSTMENT DETAIL - SCALE 2 TO 1



NOTES

- 1 - CORROSION RESISTANT STEEL ENCLOSURE
- 2 - UNIT PROVIDES NO SHAFT RESTORING TORQUE. THE ACTUATING DEVICE MUST CONTROL MOVEMENT OF THE SHAFT
- 3 - CIRCUIT DIAGRAM, CATALOG LISTING AND MILITARY STANDARD NO. MS 24420-1 ARE SHOWN ON NAMEPLATE
- 4 - SWITCH SEALED PER MIL-S-8805 SYMBOL 4
- 5 REPLACEMENT MOUNTING HARDWARE - PACKET 19PA10
- 6 DO NOT APPLY MORE THAN 20-25 INCH-POUNDS OF TORQUE WHEN TIGHTENING LOCKING NUT
- 7 APPLICATION INFORMATION ONLY
- 8 HARDWARE MAY BE PACKAGED UNASSEMBLED PER MIL-S-8805

FO-52851-A

DRAWN

CHECK