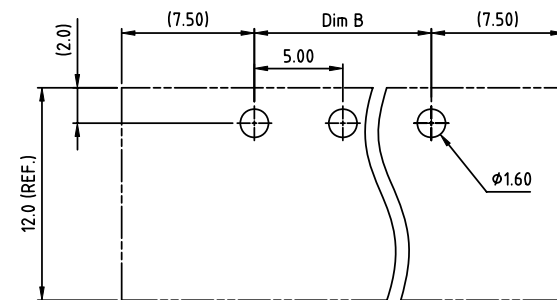
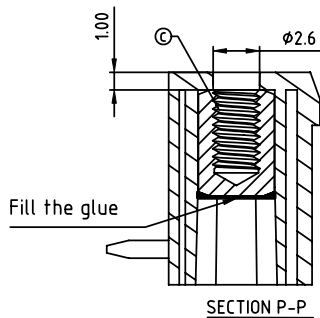
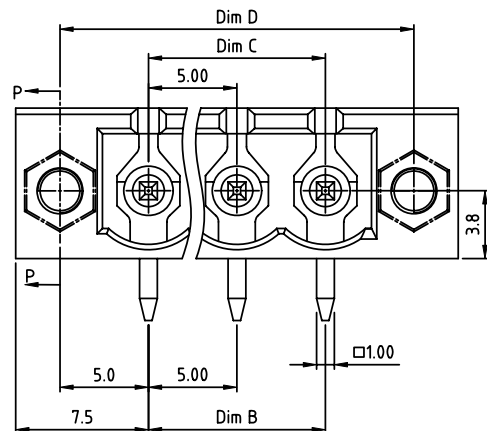
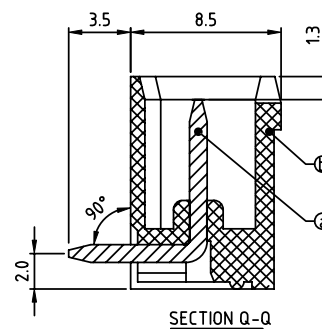
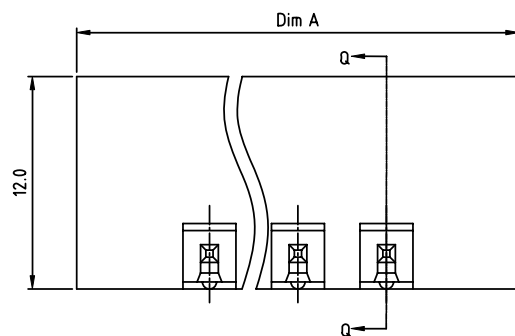


PRODUCT NUMBER	PITCH
OQxx75x100J0G	5.00 mm






RECOMMENDED P.C.B LAYOUT  
TOP VIEW



## Material:

- Item ① Contact pin: Copper Tin plated
- Item ② Insulator housing: Thermoplastic (UL94V-0)
- Item ③ Flange nut: Brass M2.5

## Electrical:

- Voltage rating: 300V/300V/300V
- Current rating: 20A/20A/20A
- Withstanding Voltage: 1.6 KV/2.5KV/2.5KV
- Operating temperature: -40°C to +115°C
- Soldering temperature: 260°C±5°C/5 Sec
- Safety Approval:   

## DIMENSION

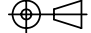
Dim A	(N+2)×5.0
Dim B&C	(N-1)×5.0
Dim D	(N+1)×5.0

N= NUMBER OF POLES

Poles	Tolerance
2P-6P	±0.15
7P-12P	±0.20
13P-18P	±0.25
19P-24P	±0.30

PART NO.: OQ xx 7 5 x 1 00J0 G

No. of poles	Body Color	RoHS compliant (lead<4%) In copper Alloy
02 2 poles	0 Black (RAL9005)	
03 3 poles	2 Red (RAL3001/D)	
...	3 Orange(RAL2011/P)	
...	4 Yellow(RAL1018/A)	
24 24 poles	5 Green(RAL6018/T)	
	6 Blue (RAL5015/A)	
	8 Grey(RAL7035/D)	
	9 White(RAL1102)	
	C Green(RAL6018/U)	

mat'l. code				surface ASME Y14.5	tolerance ASME Y14.5	projection 	product family TERMINAL BLOCK
ltr	ecn	no	dr	date	tolerances unless otherwise specified	MM	title
					angles X±0.5		TERMINAL BLOCK
					X.X±0.3		PLUGGABLE SOCKET, WITH FLANGE, RIGHT ANGLE
					X°±1°		dwg no
					dr HANKE FENG 032814		sheet 1 of 1 size
					enr HANKE FENG 032814		OQxx75x100J0G
					chr SHI JUN 032814		A4
					appd SHI JUN 032814		type
							CUSTOMER Drawing
sheet index	revision	A					
sheet	1						