

JENNY-60

~60° beam

TECHNICAL SPECIFICATIONS:

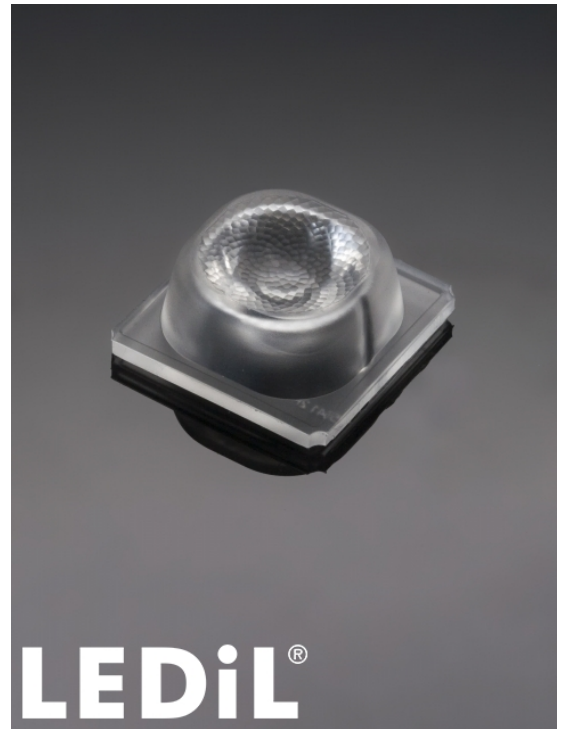
Dimensions	35.0 x 35.0 mm
Height	13.4 mm
Fastening	pin
ROHS compliant	yes ⓘ

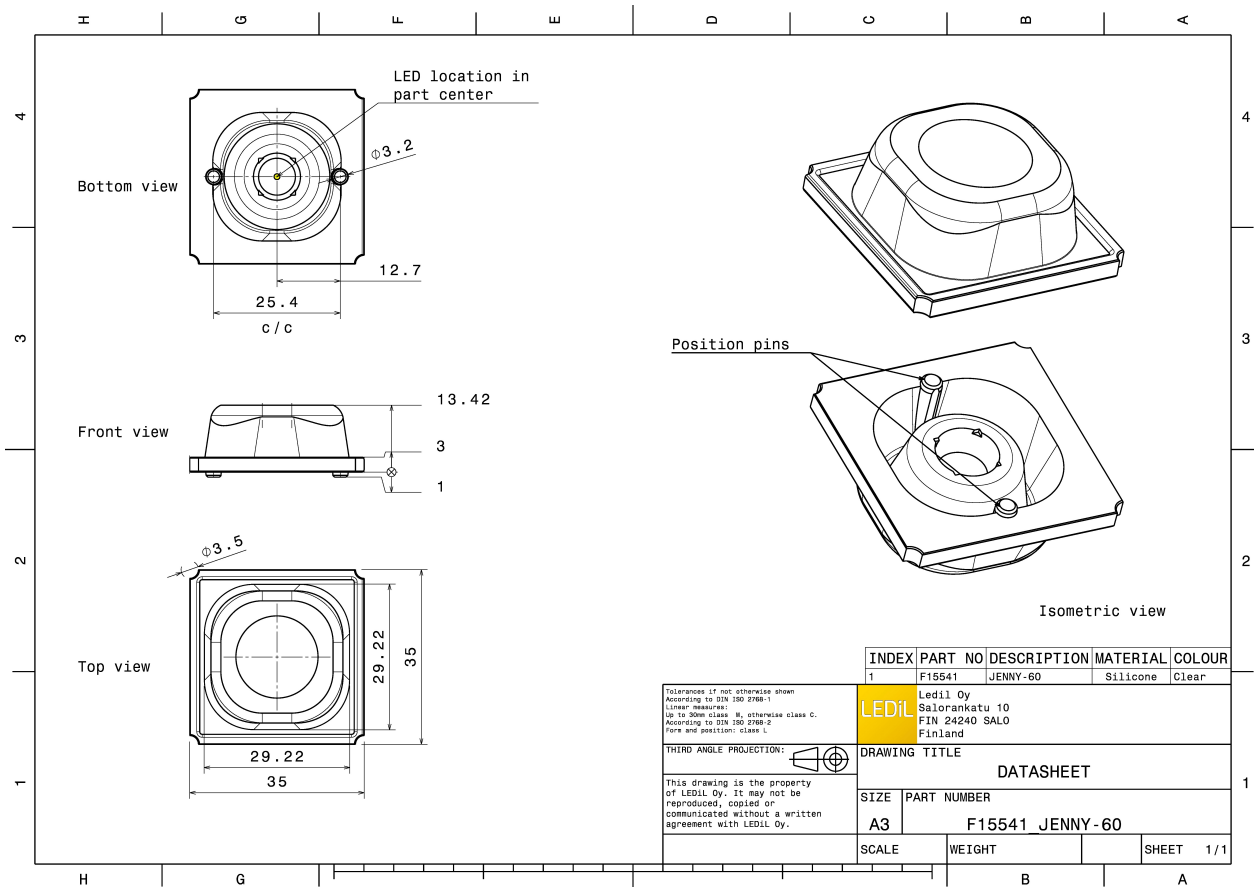
MATERIAL SPECIFICATIONS:

Component	Type	Material	Colour	Finish
JENNY-60	Single lens	Silicone	clear	

ORDERING INFORMATION:

Component	Qty in box	MOQ	MPQ	Box weight (kg)
F15541_JENNY-60 » Box size: 480 x 280 x 300 mm	1200	120	60	9.9



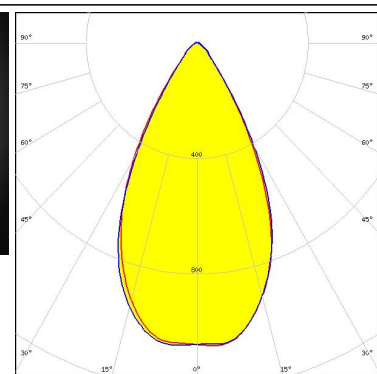
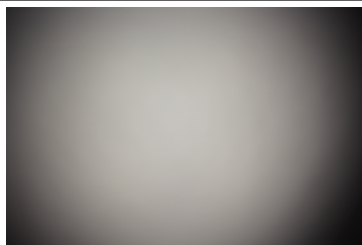


See also our general installation guide: www.ledil.com/installation_guide

PHOTOMETRIC DATA (MEASURED):



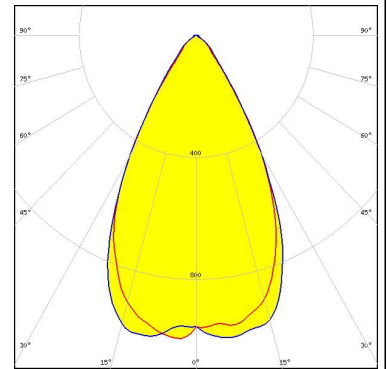
LED LUXEON M/MX
FWHM / FWTM 55.0° / 81.0°
Efficiency 93 %
Peak intensity 1.1 cd/lm
LEDs/each optic 1
Light colour White
Required components:



PHOTOMETRIC DATA (SIMULATED):

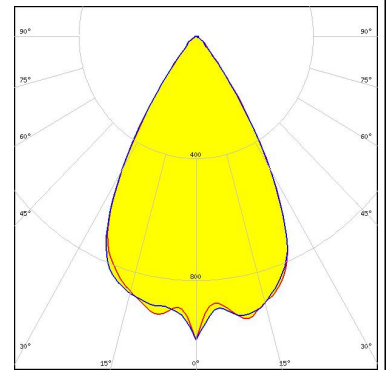
CREE LED

LED MHD-E/G
FWHM / FWTM 57.0° / 84.0°
Efficiency 94 %
Peak intensity 1 cd/lm
LEDs/each optic 1
Light colour White
Required components:



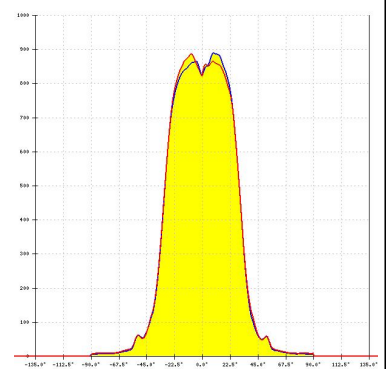
CREE LED

LED MK-R
FWHM / FWTM 57.0° / 82.0°
Efficiency 95 %
Peak intensity 1 cd/lm
LEDs/each optic 1
Light colour White
Required components:



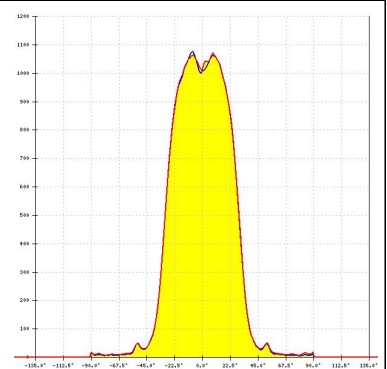
CREE LED

LED XHP50.3 HD
FWHM / FWTM 62.0° / 86.0°
Efficiency 96 %
Peak intensity 0.9 cd/lm
LEDs/each optic 1
Light colour White
Required components:



CREE LED

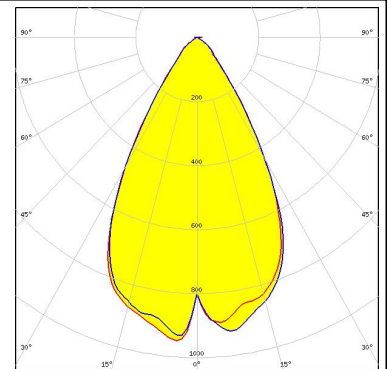
LED XHP50.3 HI
FWHM / FWTM 58.0° / 77.0°
Efficiency 97 %
Peak intensity 1.1 cd/lm
LEDs/each optic 1
Light colour White
Required components:



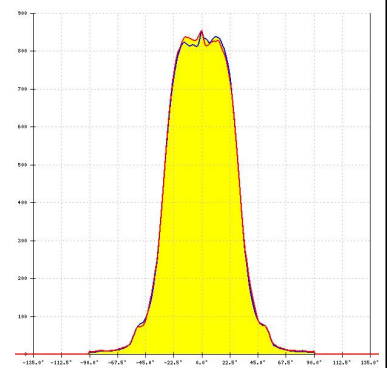
PHOTOMETRIC DATA (SIMULATED):



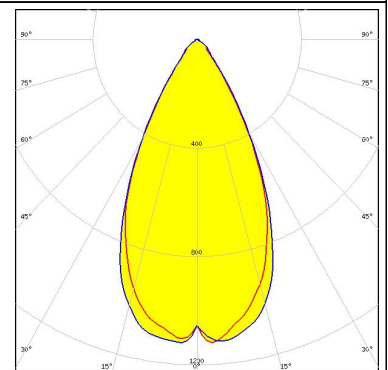
LED XHP70
FWHM / FWTM 59.0° / 86.0°
Efficiency 93 %
Peak intensity 1 cd/lm
LEDs/each optic 1
Light colour White
Required components:



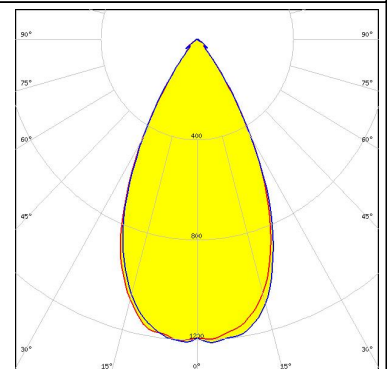
LED XHP70.3
FWHM / FWTM 62.0° / 92.0°
Efficiency 96 %
Peak intensity 0.9 cd/lm
LEDs/each optic 1
Light colour White
Required components:



LED LUXEON 7070
FWHM / FWTM 54.0° / 80.0°
Efficiency 91 %
Peak intensity 1.1 cd/lm
LEDs/each optic 1
Light colour White
Required components:



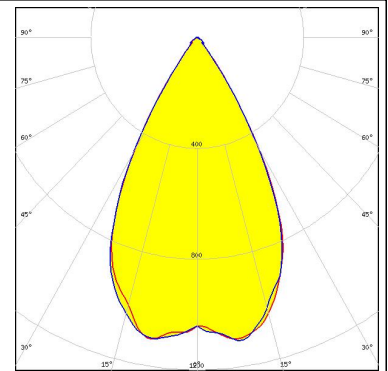
LED NFMW48xA
FWHM / FWTM 54.0° / 78.0°
Efficiency 97 %
Peak intensity 1.2 cd/lm
LEDs/each optic 1
Light colour White
Required components:



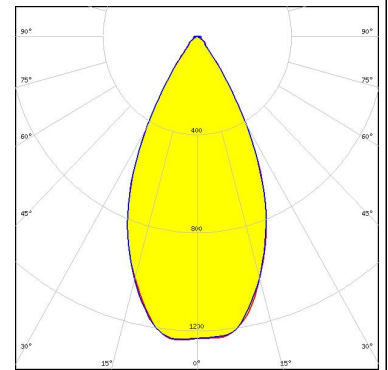
PHOTOMETRIC DATA (SIMULATED):



LED NV4WB35AM
 FWHM / FWTM 58.0° / 76.0°
 Efficiency 93 %
 Peak intensity 1.2 cd/lm
 LEDs/each optic 1
 Light colour White
 Required components:

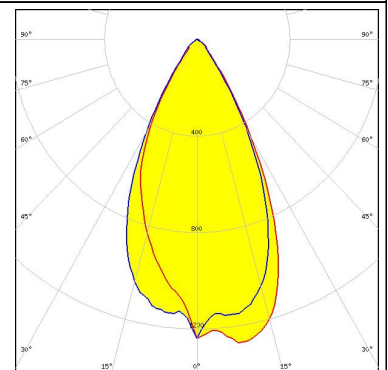


LED NVSxE21A
 FWHM / FWTM 51.0° / 77.0°
 Efficiency 94 %
 Peak intensity 1.3 cd/lm
 LEDs/each optic 4
 Light colour White
 Required components:



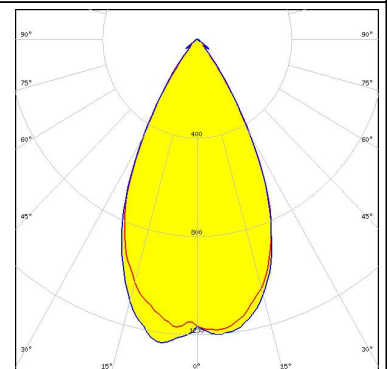
Opto Semiconductors

LED Duris S10
 FWHM / FWTM 49.0° / 77.0°
 Efficiency 94 %
 Peak intensity 1.3 cd/lm
 LEDs/each optic 1
 Light colour White
 Required components:



Opto Semiconductors

LED Duris S8
 FWHM / FWTM 50.0° / 77.0°
 Efficiency 94 %
 Peak intensity 1.2 cd/lm
 LEDs/each optic 1
 Light colour White
 Required components:

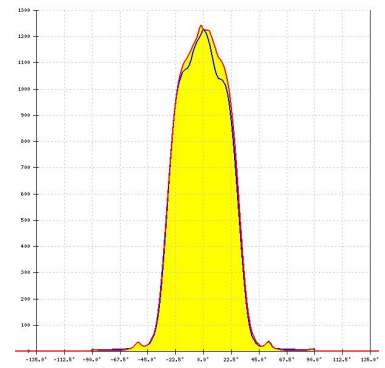


PHOTOMETRIC DATA (SIMULATED):

OSRAM

Opto Semiconductors

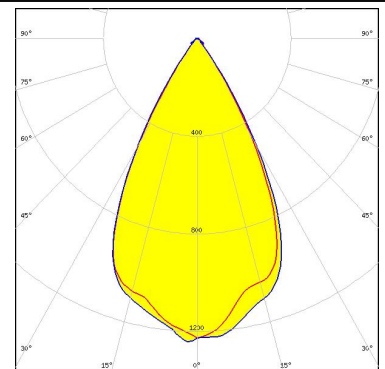
LED OSCONIQ P 3737 (2W version)
 FWHM / FWTM 56.0° / 75.0°
 Efficiency 97 %
 Peak intensity 1.2 cd/lm
 LEDs/each optic 1
 Light colour White
 Required components:



OSRAM

Opto Semiconductors

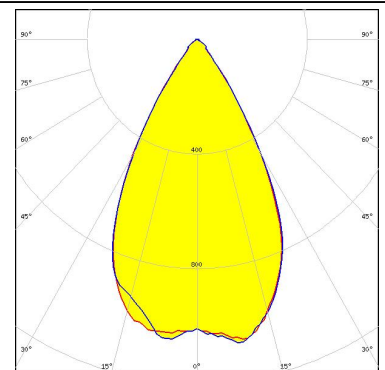
LED OSCONIQ P 3737 (2W version)
 FWHM / FWTM 56.0° / 75.0°
 Efficiency 94 %
 Peak intensity 1.2 cd/lm
 LEDs/each optic 1
 Light colour White
 Required components:



OSRAM

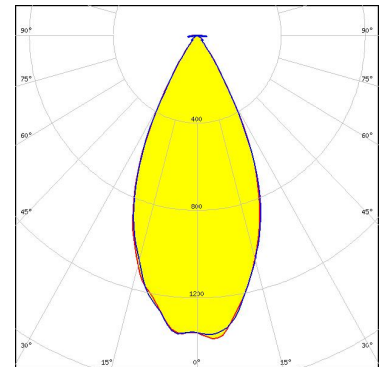
Opto Semiconductors

LED OSCONIQ P 7070
 FWHM / FWTM 55.0° / 79.0°
 Efficiency 95 %
 Peak intensity 1.1 cd/lm
 LEDs/each optic 1
 Light colour White
 Required components:



SEOUL SEMICONDUCTOR

LED Z8Y22
 FWHM / FWTM 48.0° / 72.0°
 Efficiency 91 %
 Peak intensity 1.4 cd/lm
 LEDs/each optic 1
 Light colour White
 Required components:



PHOTOMETRIC DATA (SIMULATED):



GENERAL INFORMATION:

NOTE: The typical beam angle will be changed by different color, chip size and chip position tolerance. The typical total beam angle is the full angle measured where the luminous intensity is half of the peak value.

MATERIALS:

As part of our continuous research and improvement processes, and to ensure the best possible quality and availability of our products, LEDiL reserves the right to change material grades without notice.

PRODUCT DATA USER AGREEMENT AND DISCLAIMER:

The measured data in the provided downloadable LEDiL Product Datasheets and Mechanical 2D-Drawings is rounded and provided as reference for planning. LEDiL Oy's optical specifications have been verified by conducting performance testing of the products in accordance with the company's quality system. The reported data are averaged results of multiple measurements with typical variation. LEDiL Oy reserves the right to without prior notification make changes and improvements to its products.

LEDiL Oy assumes neither warranty, nor guarantee nor any other liability of any kind for the contents and correctness of the provided data. The provided data has been generated with highest diligence but the provided data may in reality not represent the complete possible variation range of all intrinsic parameters. Therefore, in certain cases a deviation from the provided data could occur.

LEDiL Oy reserves the right to undertake technical changes of its products without further notification which could lead to changes in the provided data. LEDiL Oy assumes no liability of any kind for the possible deviation from any provided data or any other damage resulting from the usage of the provided data.

The user agrees to this disclaimer and user agreement with the download or usage of the provided files.

LEDiL Oy

Joensuunkatu 13
FI-24240 SALO
Finland

LEDiL Inc.

228 West Page Street
Suite D
Sycamore IL 60178
USA

Ledil Optics Technology (Shenzhen) Co., Ltd.

405 , Block B
Casic Motor Building
Shenzhen 518057
P.R.CHINA

Local sales and technical support

[www.ledil.com/
where_to_buy](http://www.ledil.com/where_to_buy)

Shipping locations

Salo, Finland
Hong Kong, China

Distribution Partners

[www.ledil.com/
where_to_buy](http://www.ledil.com/where_to_buy)