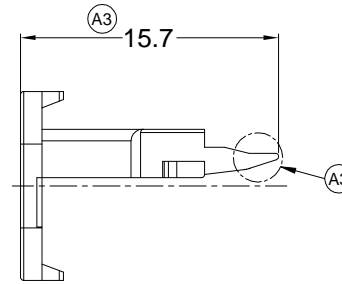
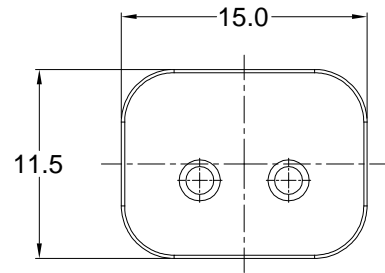
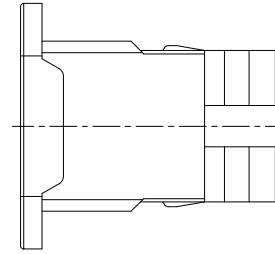
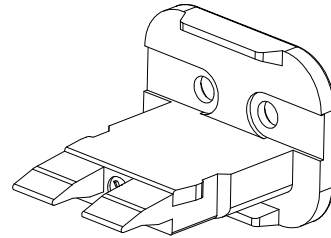


REVISIONS					
REV	ECO	DESCRIPTION	DATE	BY	APPR
A2	--	RELEASED DRAWING	18/SEP/13	DRP	TOMMY
A3	--	OPTIMIZATION OF STRUCTURE	20/AUG/24	ALLEN	TOMMY



NOTES: UNLESS OTHERWISE SPECIFIED

1. MATERIAL: THERMOPLASTIC; COLOR: BLACK
2. RoHS COMPLIANT
3. CAVITIES: 2
4. USE WITH CONNECTORS AT06-2S-LED*
(* = MODIFICATIONS AND/OR COLORS)
5. ALL DIMENSIONS ARE FOR REFERENCE USE ONLY.

QUANTITY	PART NUMBER	DESCRIPTION	ITEM
MATERIALS LIST			
UNLESS OTHERWISE SPECIFIED 1) All dimensions are in metric(mm). 2) Tolerances are as follows: 1 PL DEC ±0.30 2 PL DEC ±0.15 3 PL DEC ±0.08 Fractions ±1/64 Angles ±1° 3) Note reference =		SIGNATURES DRAWN: ALLEN CHECKED: ORION ENGINEER: APPROVAL: TOMMY CUSTOMER:	DATE 20/AUG/24 21/AUG/24 22/AUG/24
MATERIAL SPECIFICATIONS: PROCESS SPECIFICATIONS: NEXT ASSY:		THIS DRAWING IS SUPPLIED FOR INFORMATION ONLY. DESIGN FEATURES, SPECIFICATIONS AND PERFORMANCE DATA SHOWN HEREON ARE THE PROPERTY OF THE AMPHENOL CORPORATION. NO RIGHTS OF REPRODUCTION ARE IMPLIED. ALL DIMENSIONS ARE SUBJECT TO NORMAL MANUFACTURING VARIATIONS.	
		SIZE B C-	REVISION A3
		SCALE NONE	SHEET 1 OF 1

Amphenol

Sine Systems - www.amphenol-sine.com
 44724 Morley Drive
 Clinton Township, MI 48036

S-WEDGE LOCK, 2 POSITION, LED,
 AT SERIES

TITLE: S-WEDGE LOCK, 2 POSITION, LED, AT SERIES
 DWG NO.: AW2S-LED
 REV: A3
 SH: 1
 OF: 1