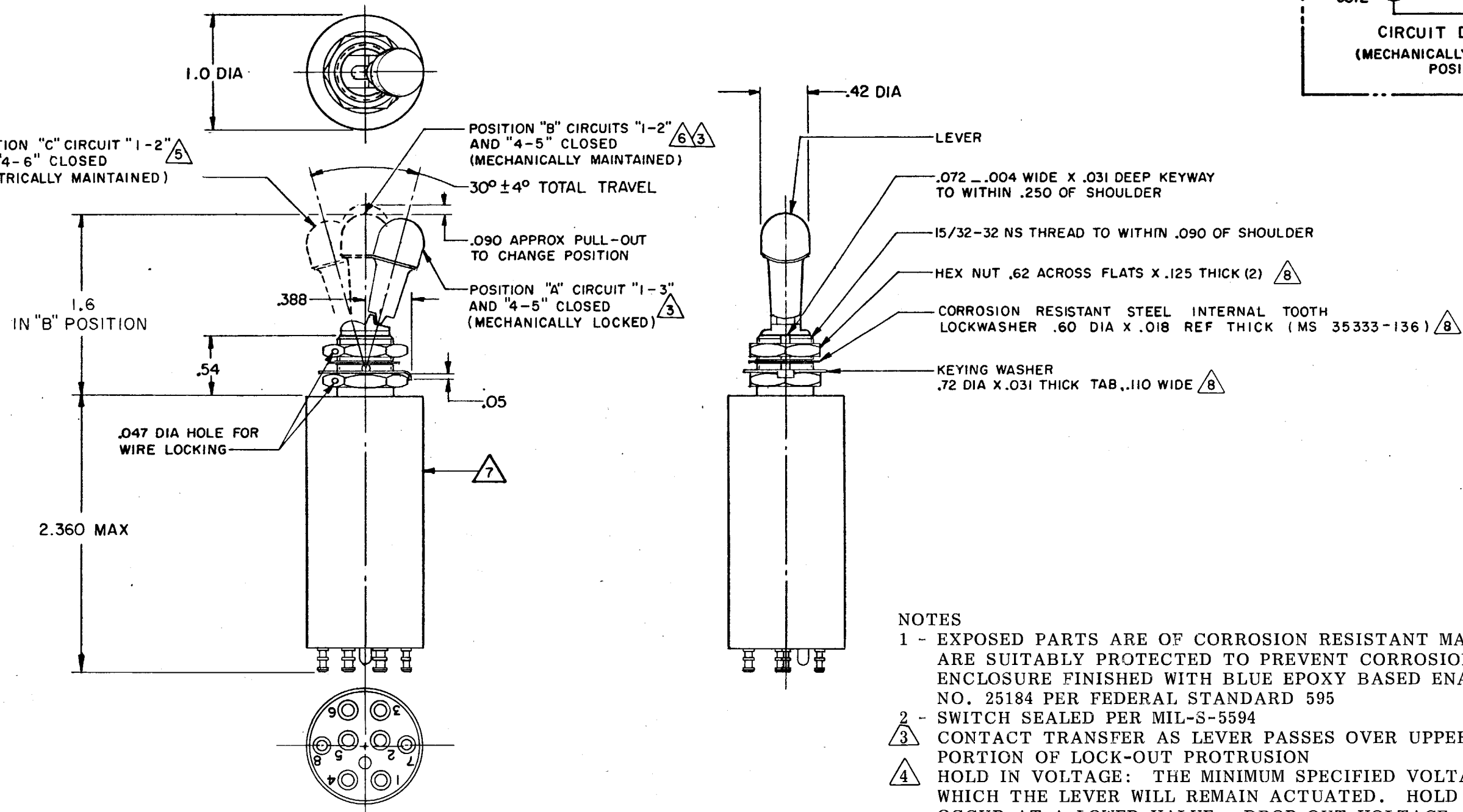
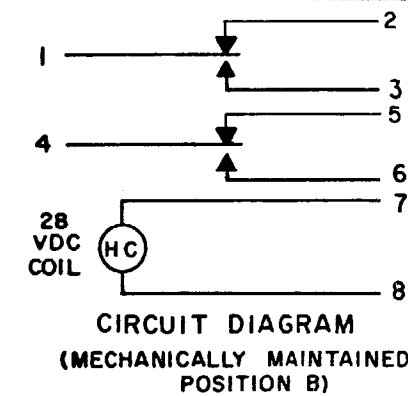


H MICRO SWITCH
 FREEPORT, ILLINOIS, U.S.A.
 A DIVISION OF HONEYWELL
 FED. MFG. CODE 91929

**SWITCH - TOGGLE
 (MAGNETIC HOLD-IN)**

CATALOG LISTING
27ET1-T2-P



NOTES

- 1 - EXPOSED PARTS ARE OF CORROSION RESISTANT MATERIAL OR ARE SUITABLY PROTECTED TO PREVENT CORROSION. ENCLOSURE FINISHED WITH BLUE EPOXY BASED ENAMEL COLOR NO. 25184 PER FEDERAL STANDARD 595
- 2 - SWITCH SEALED PER MIL-S-5594
- 3 - CONTACT TRANSFER AS LEVER PASSES OVER UPPER FLAT PORTION OF LOCK-OUT PROTRUSION
- 4 - HOLD IN VOLTAGE: THE MINIMUM SPECIFIED VOLTAGE AT WHICH THE LEVER WILL REMAIN ACTUATED. HOLD IN MAY OCCUR AT A LOWER VALUE. DROP OUT VOLTAGE: THE VOLTAGE RANGE IN WHICH THE LEVER WILL BE RELEASED
- 5 - CIRCUITS 1-2 AND 4-6 CAN BE BROKEN MANUALLY
- 6 - ENERGIZING SOLENOID WILL NOT BREAK CIRCUITS 1-2 AND 4-5
- 7 - CIRCUIT IDENTIFICATION IS SHOWN ON SWITCH
- 8 - HARDWARE MAY BE FURNISHED UNASSEMBLED PER MIL-S-5594

DRAWING NUMBER: M 27ET1-T2-P
 ISSUE: 10
 REVISIONS:
 A NEW DWG PR-2899 17 OCT 72
 B CO32637 8 NOV 73
 C CO 50162 WJM 5 OCT 81
 D CO-53400 KAG 15 JUL 83
 E CO53825 JAP 14 SEPT 83
 F CO54089 JAP 8 DEC 83
 G CO55800 TSK 31 AUG 84
 H 0018947 LKM 22 FEB 06
 CHECK: D B W 17 OCT 72
 DRAWN: D B W 17 OCT 72
 RELEASE NO. PR-2899
 REPLACES: M 27ET1-T2-P

THIS DRAWING COVERS A PROPRIETARY ITEM AND IS THE PROPERTY OF MICRO SWITCH, A DIVISION OF MINNEAPOLIS-HONEYWELL REGULATOR CO. THIS DRAWING IS NOT TO BE COPIED OR USED WITHOUT THE APPROVAL OF MICRO SWITCH.

CHARACTERISTICS		ELECTRICAL DATA						SCALE FULL	
SOLENOID RATING AT 20° C		CONTACT ARRANGEMENT S P D T(2)						DO NOT SCALE PRINT	
STEADY STATE LIMITS - - - - 20-29 VDC		RATING IN AMPERES		UNLESS OTHERWISE NOTED				DIMENSIONS ARE IN INCHES	
HOLD-IN - - - - - 15 VDC		VOLTAGE	SEA LEVEL		65,000 FT		TOLERANCES ARE:		
DROP OUT - - - - - 0-15 VDC			INRUSH	RES IND	MOTOR	INRUSH	RES IND	MOTOR	ONE PLACE (.0)
COIL RESISTANCE - - - - - 220 OHM MIN		28 VOLTS DC	7	2		5	1.5	TWO PLACE (.00)	±.015
OPERATING FORCE - - - - - 7 LBS MAX								THREE PLACE (.000)	±.005
OVERRIDE FORCE AT 29 VDC - - - - 10 LBS MAX								ANGLES	±
		WEIGHT 6.0 OZ MAX							