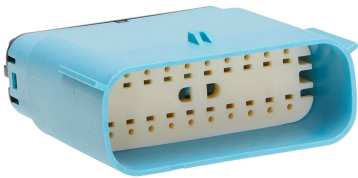




**Part Number :** [334822423](#)  
**Product Description :** MX150 Mid-Voltage Mat-Sealed Male Connector Assembly, Dual Row, 20 Circuits, 48V, Keying Option A, without Connector Position Assurance, Light Blue  
**Series Number :** 33482  
**Status :** Active  
**Product Category :** Connector Housings




Documents & Resources

**Drawings**  
[334822423\\_sd.pdf](#)  
[PK-31300-635-001.pdf](#)

**Specifications**  
[AS-33472-100-001.pdf](#)  
[AS-33472-100-FR-001.pdf](#)  
[PS-33472-000-001.pdf](#)

Product Environment Compliance

Compliance

GADSL/IMDS	Compliant
China RoHS	
EU ELV	Compliant per 2000/53/EC
Low-Halogen Status	Low-Halogen per IEC 61249-2-21
REACH SVHC	Contains Dodecamethylcyclohexasiloxane; Decamethylcyclopentasiloxane; Octamethylcyclotetrasiloxane per D(2024)7663-DC (21 Jan 2025)
EU RoHS	Compliant per EU 2015/863

Multiple Part Product Compliance Statements  
- Eu RoHS  
- REACH SVHC  
- Low-Halogen

Multiple Part Industry Compliance Documents

- IPC 1752A Class C
- IPC 1752A Class D
- Molex Product Compliance Declaration
- IEC-62474
- chemSHERPA (xml)

## EU RoHS Certificate of Compliance

---

### Part Details

#### General

Status	Active
Category	Connector Housings
Series	33482
Description	MX150 Mid-Voltage Mat-Sealed Male Connector Assembly, Dual Row, 20 Circuits, 48V, Keying Option A, without Connector Position Assurance, Light Blue
Application	Power, Wire-to-Wire, Automotive
Product Name	MX150
UPC	196823542589

#### Agency

UL	E29179
----	--------

#### Physical

Circuits (maximum)	20
Color - Resin	Blue (Light)
Gender	Plug
Glow-Wire Capable	No
Keying to Mating Part	Yes
Lock to Mating Part	Yes
Material - Resin	SPS/Nylon
Net Weight	21.678/g
Number of Rows	2
Packaging Type	Bag
Panel Mount	No
Pitch - Mating Interface	3.50mm

Polarized to Mating Part	Yes
Stackable	No
Temperature Range - Operating	-40° to +125°C

---

## Mates With / Use With

### Mates with Part(s)

Description	Part Number
MX150 Mid-Voltage Mat-Sealed Female Connector Assemblies	<u>300361</u>

### Use with Part(s)

Description	Part Number
MX150 Backshell for Male Sealed Connector Assembly, 20 Circuit, with Rib	<u>349502011</u>
MX150 Backshell for Male Sealed Connector Assembly, 20 Circuit, without Rib	<u>349502021</u>
MX150 Male Terminals	<u>33000</u>
MX150 Male Terminals	<u>33011</u>

---

This document was generated on Mar 18, 2025