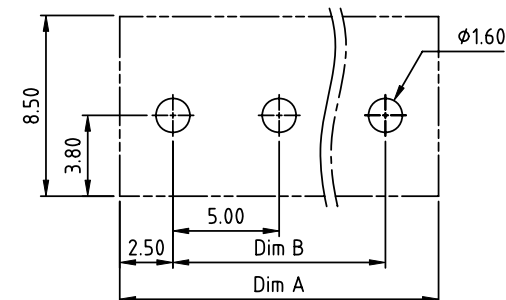
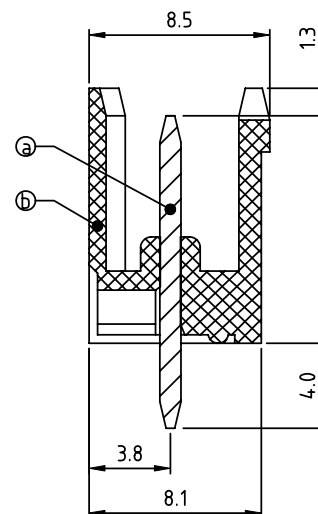
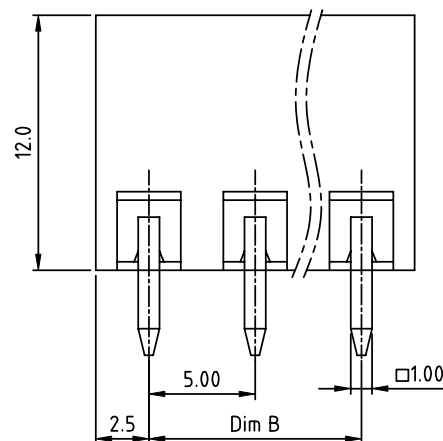
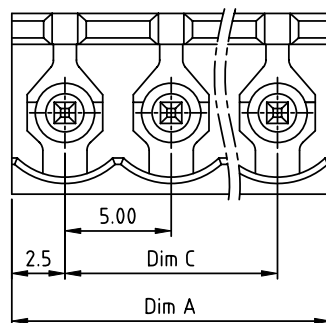


PRODUCT NUMBER	PITCH
OQxx70x000J0G	5.00 mm



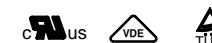
RECOMMENDED P.C.B LAYOUT  
TOP VIEW

## Material:

- Item ③ Male contact pin: Copper ,Tin plated
- Item ④ Terminal housing: Thermoplastic (UL94V-0)

## Electrical:

- Voltage rating: 300V/300V/300V
- Current rating: 20A/20A/20A
- Withstanding Voltage: 1.6 KV/2.5KV/2.5KV
- Operating temperature: -40°C to +115°C
- Soldering temperature: 260°C±5°C/5 Sec
- Safety Approval:



## DIMENSION

Dim A	N×5.0
Dim B&C	(N-1)×5.0

N = Number of poles

Poles	Tolerance
2-6p	±0.15
7-12p	±0.20
13-18p	±0.30
19-24p	±0.40

PART NO.: OQ xx 7 0 x 0 00J0 G

No. of poles	Body Color	RoHS compliant (lead<4%) In copper Alloy
02 2 poles	0 Black (RAL9005)	
03 3 poles	2 Red (RAL3001/D)	
...	3 Orange(RAL2011/P)	
24 24 poles	4 Yellow(RAL1018/A)	
	5 Green(RAL6018/T)	
	6 Blue (RAL5015/A)	
	8 Grey(RAL7035/D)	
	9 White(RAL1102)	
	C Green(RAL6018/U)	

mat'l. code				surface	tolerance	projection	product family
litr ecn no dr date				ASME Y14.5	ASME Y14.5		TERMINAL BLOCK
				tolerances unless otherwise specified		MM	title
				angles	X.±0.5		TERMINAL BLOCK
				flat	X.X±0.3		PLUGGABLE SOCKET, OPEN TYPE, VERTICAL
				X'±1°	X.XX±0.1	scale	dwg no
				dr	HANKE FENG 032814		sheet 1 of 1 size
				engr	HANKE FENG 032814		A4
				chr	SHI JUN 032814		
				appd	SHI JUN 032814		type
sheet index	revision	A					CUSTOMER Drawing