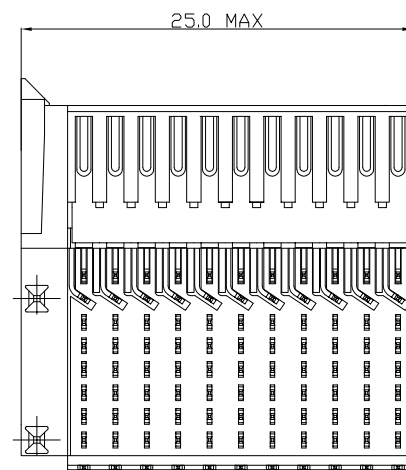
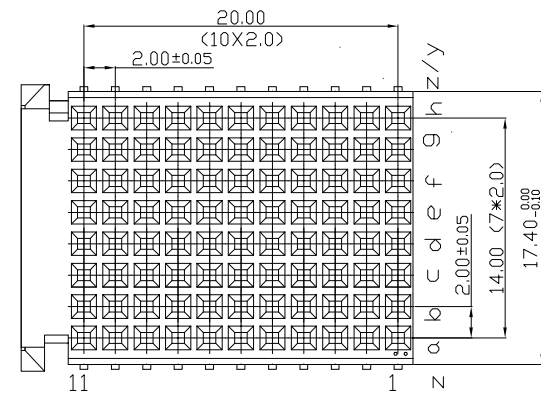
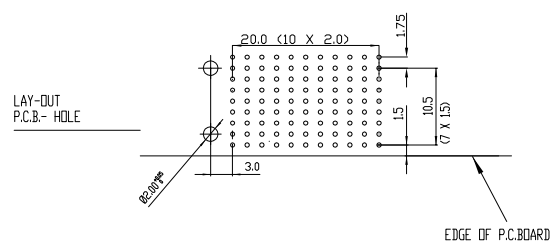
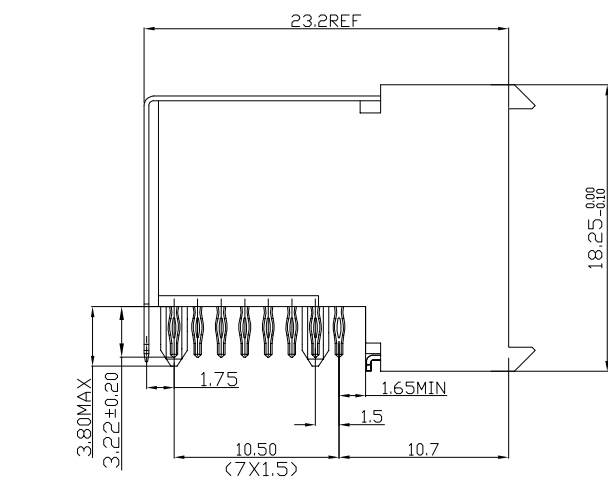


Tous droits strictement reserves. Reproduction ou communication a des tiers interdite sous quelque forme que ce soit sans autorisation ecrite du proprietaire. Propriete de c FCI. Droits de reproduction FCI.



All rights strictly reserved. Reproduction or issue to third parties in any form whatever is not permitted without written authority from the proprietor. Property of FCI. Copyright FCI.



PERFORMANCE CHARACTERISTICS

CURRENT RATING 1.5A AT 20°C (FULLY LOADED)
1 A AT 70°C (FULLY LOADED)
RATED VOLTAGE : 500 V AC (CONT /CONT)
OPERATING TEMPERATURE : -55°C TO 125°C
CONTACT RESISTANCE 20 MΩ MAX
INSERTION FORCE : 0.75N MAX/CONT
EXTRACTION FORCE : 0.15N MIN/CONT
INSULATION RESISTANCE : 10⁴ MΩ MIN

- NOTES 1. LEAD FREE INDICATOR (LF=LEAD FREE)
 PERFORMANCE LEVEL INDICATOR (REF. DWG NO.BSC: 201844.003)
2. THIS PRODUCT IS CSA APPROVED. THIS PRODUCT IS UL RECOGNIZED.
3. FOR RECOMMENDED PTH DIMENSIONS REFER DRAWING : BSA201572.001
4. THIS PRODUCT (LF) MEETS EUROPEAN UNION DIRECTIVES AND OTHER COUNTRY REGULATIONS AS DESCRIBED IN GS-22-008

				www.fciconnect.com		✓	tolerance 1DEC ±0.2 1DEC 2DEC ±0.1 2DEC ANGLES ±1° HOEKEN	projection 	MM
				Dr	W.Panis	30-04-96	Product family	MILLIPICS	
				Eng			Spec ref		
				Chr			Material		
				Appr				ECN	
rev	ecn no	dr	date	title					
A	CONVERSION REVISION 01	KN	14-09-01	MPACS 8+2R RA RCP CONN TYPE F/WITH SHIELDED					
B	I05-0093	MINI	17-06-05						
C	DG07-0362	Kasori	05-09-07						
D	DG10-0110	NZ	05-30-10						
				dwg no	BS,C ,202260,003				Rev. D
				catalog no	HM2R89PA8101----				
				CUMSTOMER		sheet 1 of 1			