



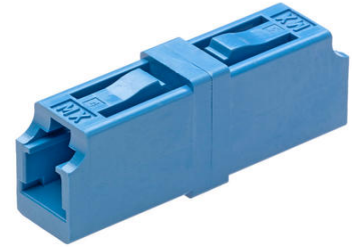
Part Number : [1061250110](#)

Product Description : LC Adapter, Duplex, Beige Body, Metal Alignment Sleeve, Snap Mount Style

Series Number : 86290

Status : Active

Product Category : Fiber Optic Adapters




Documents and Resources

Drawings

[1061250110_sd.pdf](#)

Product Environment Compliance

Compliance

GADSL/IMDS	Not Relevant
China RoHS	 per SJ/T 11365-2006
EU ELV	Not Relevant
Low-Halogen Status	Not Low-Halogen per IEC 61249-2-21
REACH SVHC	Contains 1,1'-(Ethane-1,2-diyl)bis[pentabromobenzene] per D(2025)7771-DC (04 Feb 2026)
EU RoHS	Compliant per EU 2015/863

Compliance Statements

- EU RoHS
- REACH SVHC
- Low-Halogen

Industry Documents

- IPC 1752A Class C
- IPC 1752A Class D
- Molex Product Compliance Declaration
- IEC-62474
- chemSHERPA (xml)

Substances of Interest

- PFAS

EU RoHS Certificate of Compliance

Additional Product Compliance Information

Part Details

General

Status	Active
Category	Fiber Optic Adapters
Series	86290
Description	LC Adapter, Duplex, Beige Body, Metal Alignment Sleeve, Snap Mount Style
Component Type	Standard
Product Name	LC
Type	Adapter
UPC	822350278133

Electrical

Shielded	No
Shield Type	N/A

Physical

Alignment Sleeve	Metal
Angled Physical Contact (APC)	No
Color - Resin	Beige
Gender	Female-Female
Material - Housing	Polymer
Mounting Style	Snap
Net Weight	5.114/g
Orientation	Straight
Panel Mount	With Flange
Ports	2
Shutter	No

Solder Process Data

Lead-Free Process Capability	N/A
------------------------------	-----

This document was generated on Apr 23, 2026