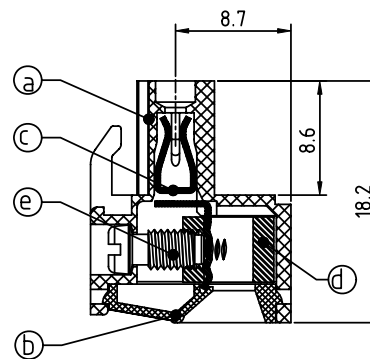
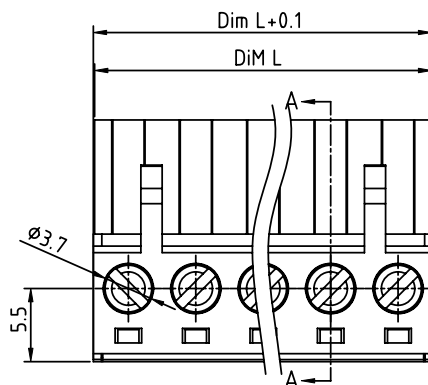
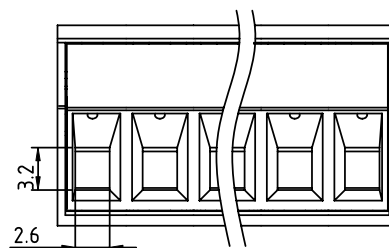
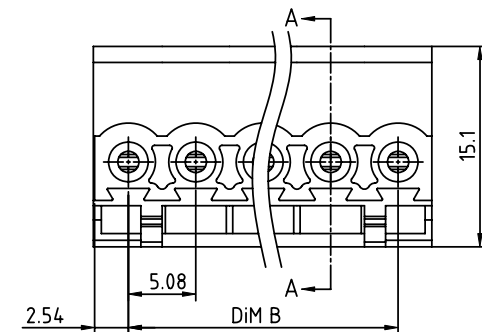


PRODUCT NUMBER	PITCH
TJxx51x600J0G	5.08 mm



SECTION A-A

Material

- Item (a) Terminal body: Thermoplastic (UL94V-0)
- Item (b) Terminal cover: Thermoplastic (UL94V-0)
- Item (c) Female contact: High conductivity copper Tin plated
- Item (d) Clamp: Brass, Ni plated
- Item (e) Terminal screw: Steel Zinc plating "-" slot type

Electrical cULus

- Voltage rating: 300V
- Current rating: 20A
- Solid wire (AWG): 12-24
- Stranded wire (AWG): 12-24
- Torque (Lb-In): 5
- Screw: M3
- Wire strip length: 7-8mm
- Withstanding Voltage: 1.6KV
- Operating temperature: -40°C to +115°C
- Safety Approval: cULus

DIMENSION

DIM L	N x 5.08
DIM B	(N-1) x 5.08

N=Number of poles

Poles	Tolerance DIM L & DIM B
2p-5p	±0.15
6p-10p	±0.20
11p-15p	±0.25
16p-20p	±0.30
21p-24p	±0.40

PART NO.: TJxx51x600J0G

No. of poles	Color	RoHS compliant
02 2 poles	0 Black (RAL9005)	(lead<4%)
03 3 poles	2 Red (RAL3001/D)	In copper Alloy
...	3 Orange (RAL2011/P)	
...	4 Yellow (RAL1018/A)	
24 24 poles	5 Green (RAL6018/T)	
	6 Blue (RAL5015/A)	
	8 Grey (RAL7035/D)	
	9 White (RAL1102)	
	C Green (RAL6018/U)	

mat'l. code				surface ASME Y14.5 ✓	tolerance ASME Y14.5	projection MM	product family TERMINAL BLOCK
ltr	ecn	no	dr	date	tolerances unless otherwise specified		title TERMINAL BLOCK
					angles X±0.5		PLUGGABLE PLUG, CONTACT ON UP SIDE
					parallel X.X±0.3		dwg no TJxx51x600J0G
					perpendicular X'±1"		sheet 1 of 1 size A4
					dr HANKE FENG 032214		type CUSTOMER Drawing
					enr HANKE FENG 032214		
					chr SHI JUN 032214		
					appd SHI JUN 032214		
sheet index	revision	A					
	sheet	1					