



PRODUCT NUMBER

20020107-XXXXXXLF

20020107-□□□□□A□□LF

PITCH

C: 3.50 mm
D: 3.81 mm
G: 5.00 mm
H: 5.08 mm

POLES

02: 2 POLES
03: 3 POLES
04: 4 POLES
24: 24 POLES

LF : DENOTED RoHS COMPATIBLE

1 : STANDARD PRODUCT
W/ BOX PACKING

HOUSING CODE

PROPERTY TABLE				
FCI SERIES NAME		06-350	06-381	06-500
PITCH (mm)		3.50	3.81	5.00
VOLTAGE RATING (VAC)		300	300	300
CURRENT RATING (A)	cULus	10	10	12
	VDE	10.5	10.5	NA
WITHSTANDING VOLTAGE (kV)	cULus	1.6	1.6	1.6
	VDE	2.5	2.5	NA
OPERATING TEMP. (°C)		-40~+115	-40~+115	-40~+115
SOLDERING TEMP. (°C)		250±10 (5 sec.)	250±10 (5 sec.)	250±10 (5 sec.)
POLES AVAILABLE		02~24	02~24	02~24
SAFETY CERTIFICATE				

CODE	COLOR	AVAILABILITY
1	GREEN(RAL 6018/T)	STANDARD
2	BLACK	ON REQUEST ONLY
3	GREY(RAL 7004/P)	ON REQUEST ONLY
4	BLUE(RAL 5015/A)	ON REQUEST ONLY
5	YELLOW(RAL 1018)	ON REQUEST ONLY

NOTES:

MATERIALS

1-1 HOUSING: THERMALPLASTIC RESIN, UL 94V-0 RATED.

1-2 TERMINAL: COPPER ALLOY, TIN PLATED.

2. PRODUCTION SPECIFICATION REFER TO FCI GS-12-625.

3. BOXED PACKAGING.

DETAILED PRODUCT PACKING SPECIFICATION REFER TO FCI GS-14-1394.

4. FCI, SAFETY CERTIFICATE LOGO AND SERIES NAME TO BE SHOWN ON PRODUCT SURFACE.

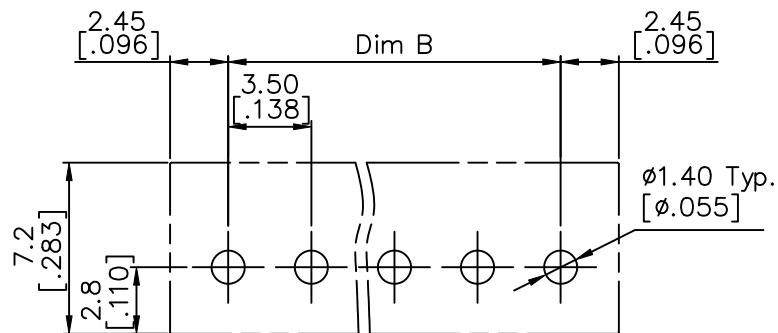
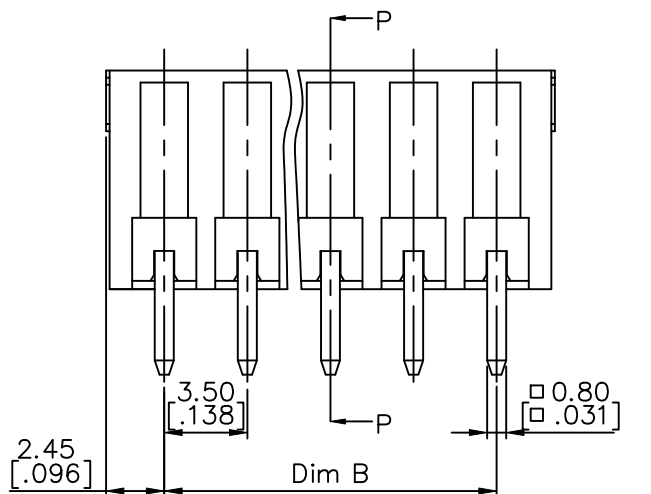
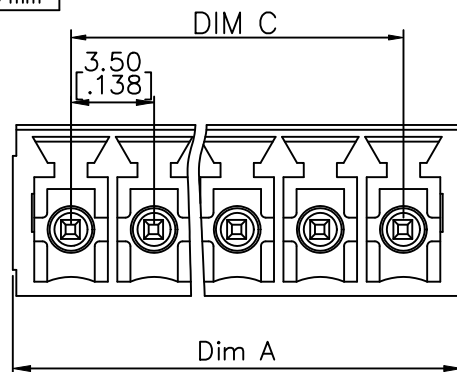
5. THE PRODUCTS WHERE THE PART NUMBER END IN "LF" MEET THE EUROPEAN UNION DIRECTIVE AND OTHER COUNTRY REGULATIONS AS DESCRIBED IN GS-22-008.

6. RECOMENDED SOLDERING PROCESS BY WAVE SOLDER.

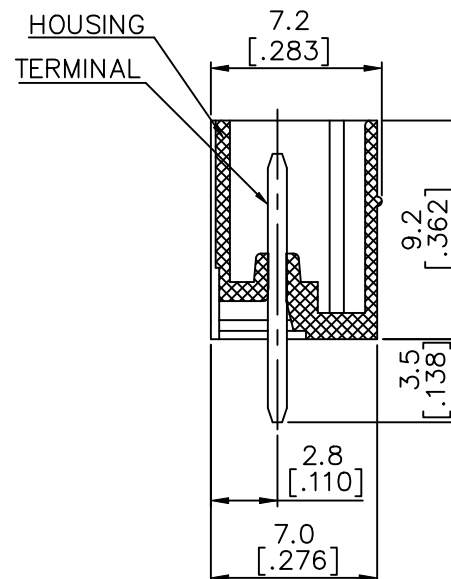
mat'l. code				surface ASME Y14.5	tolerance ASME Y14.5	projection 	product family TERMINAL BLOCK	
ltr	ecr no	dr	date	tolerances unless otherwise specified			title	
E	T10-0159	WL	100410	angles	X.±0.5[.020]	MM	TERMINAL BLOCK	
F	T10-0187	WL	121410	to face	X.X±0.3[.012]	INCH	PLUGGABLE SOCKET, STRAIGHT	
G	T11-0013	WL	040811	X*±1*	X.XX±0.1[.004]	scale	dwg no	
H	T-004330	WL	063011	dr	BEER FU	062509	sheet 1 of 5 size	
J	T-004746	WL	072011	enr	BEER FU	062509	20020107	
K	T-005754	WL	090611	chr	GARY HSIEH	062509	A4	
				appd	JOSEPH HSIA	062509	type	
sheet index		revision	K	K	K	K	CUSTOMER Drawing	
		sheet	1	2	3	4		



PRODUCT NUMBER	SERIES NAME	PITCH
20020107-CXXXXXXLF	06-350	3.50 mm



RECOMMENDED P.C.B LAYOUT



SECTION P-P

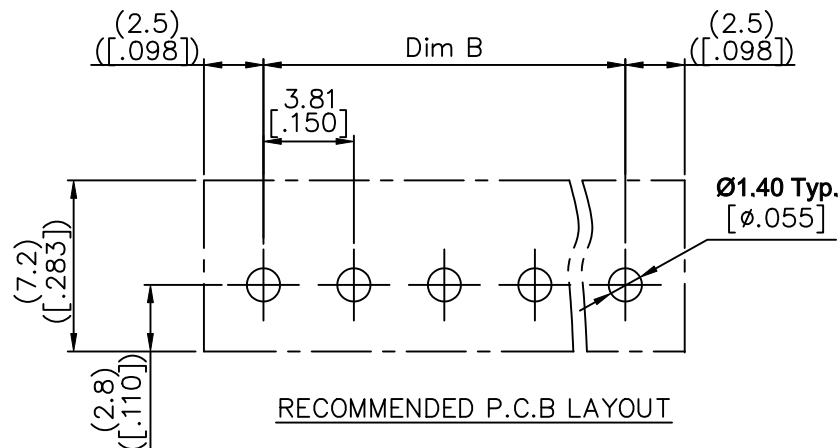
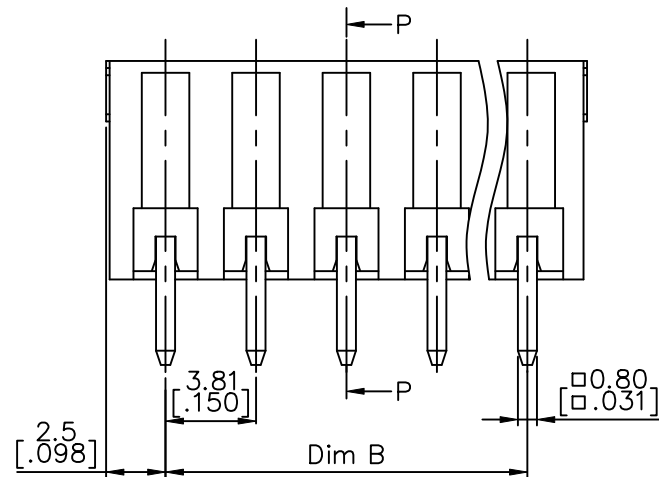
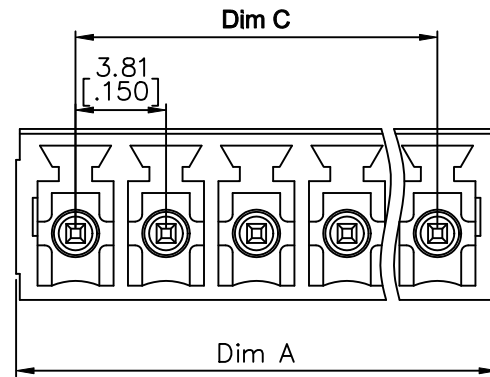
N= NUMBER OF POLES
DIMENSION

Dim A	$(N-1) \times 3.5 [.138] + 4.9 [.193]$
Dim B	$(N-1) \times 3.5 [.138]$
Dim C	$(N-1) \times 3.5 [.138]$

Poles	Tolerance
2P-6P	$\pm 0.15 [.006]$
7P-12P	$\pm 0.20 [.008]$
13P-18P	$\pm 0.25 [.010]$
19P-24P	$\pm 0.30 [.012]$

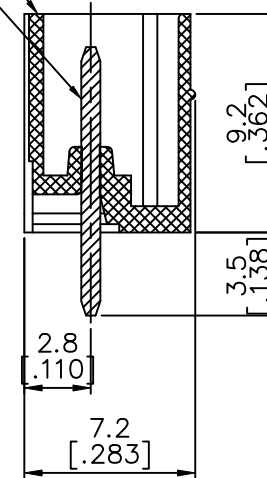
mat'l. code	surface ASME Y14.5	tolerance ASME Y14.5	projection MM [INCH]	product family TERMINAL BLOCK
ltr	ecn no	dr	date	title
K				TERMINAL BLOCK
				PLUGABLE, SOCKET, SIGNAL, VERTICAL
				dwg no
				20020107
				type
				CUSTOMER Drawing
sheet index	revision sheet			

PRODUCT NUMBER	SERIES NAME	PITCH
20020107-DXXXXXXLF	06-381	3.81 mm



HOUSING

TERMINAL



SECTION P-P

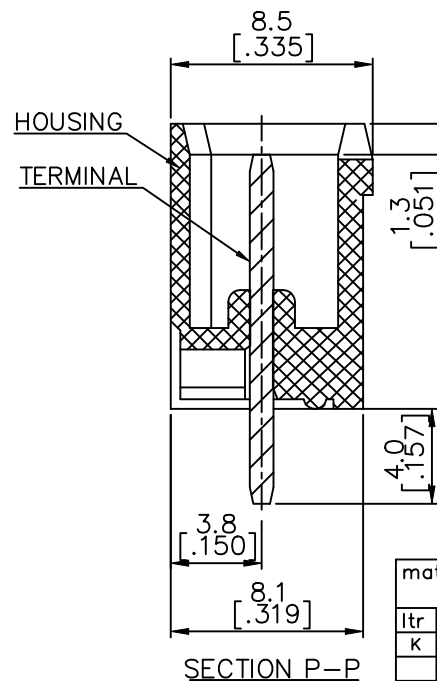
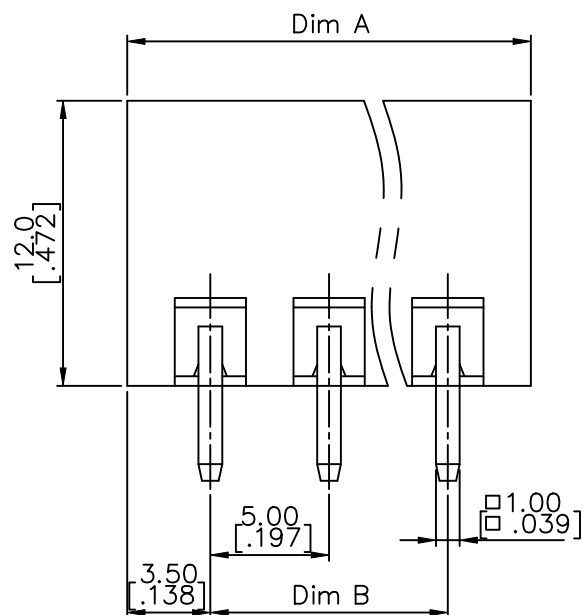
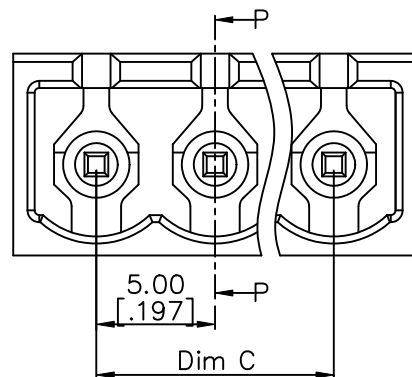
N= NUMBER OF POLES
DIMENSION

Dim A	$(N-1) \times 3.81 [.150] + 5.0 [.197]$
Dim B	$(N-1) \times 3.81 [.150]$
Dim C	$(N-1) \times 3.81 [.150]$

Poles	Tolerance
2p-6p	$\pm 0.15 [.006]$
7p-12p	$\pm 0.20 [.008]$
13p-16p	$\pm 0.25 [.010]$
17p-24p	$\pm 0.30 [.012]$

mat'l. code				surface ASME Y14.5 ✓	tolerance ASME Y14.5	projection MM INCH	product family TERMINAL BLOCK
ltr	ecn no	dr	date	tolerances unless otherwise specified			title
K				angles	X. $\pm 0.5 [.020]$		TERMINAL BLOCK
				linear	X.X $\pm 0.3 [.012]$		PLUGABLE, SOCKET, SIGNAL, VERTICAL
				X $\pm 1^\circ$	X.XX $\pm 0.1 [.004]$	scale	sheet 3 of 5 size
		dr	BEER FU	062509			20020107
		enr	BEER FU	062509			A4
		chr	GARY HSIEH	062509			
		app	JOSEPH HSIA	062509			
sheet index	revision sheet						type CUSTOMER Drawing

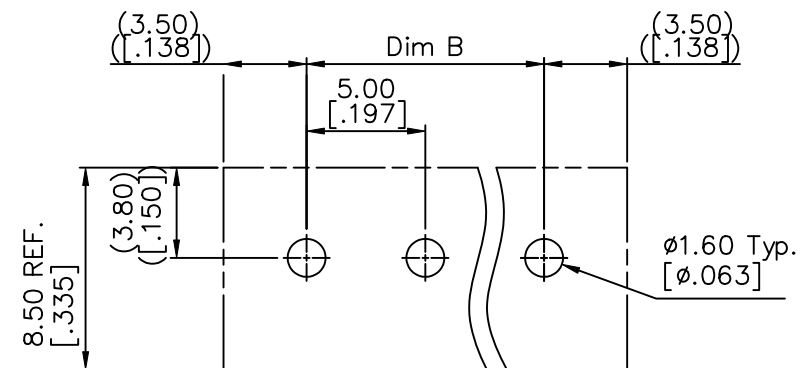
PRODUCT NUMBER	SERIES NAME	PITCH
20020107-GXXXXXXLF	06-500	5.00 mm



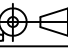
N = NUMBER OF POLES
DIMENSION

Dim A	$N \times 5.0[.197] + 2.0[.079]$
Dim B	$(N-1) \times 5.0[.197]$
Dim C	$(N-1) \times 5.0[.197]$

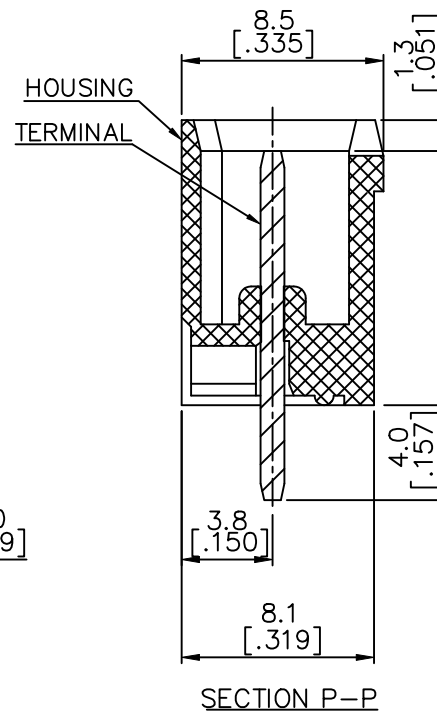
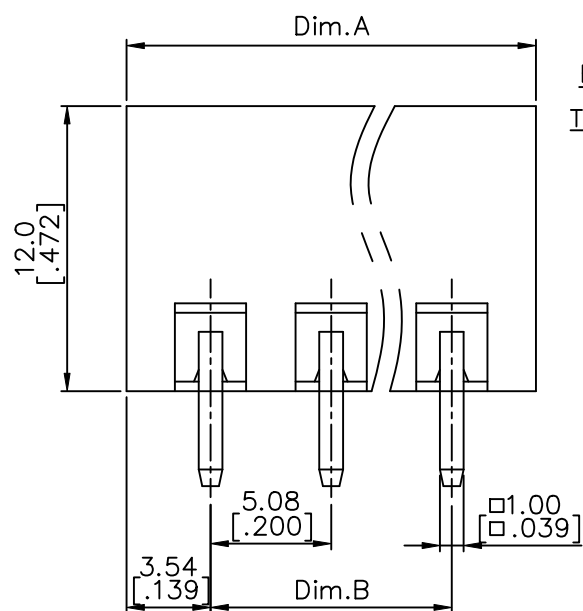
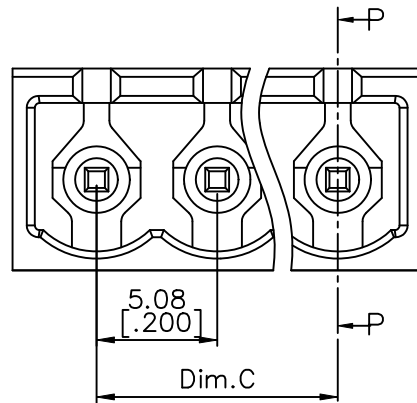
Poles	Tolerance
2p-6p	$\pm 0.15[.006]$
7p-12p	$\pm 0.25[.010]$
13p-16p	$\pm 0.35[.014]$
17p-24p	$\pm 0.40[.016]$



RECOMMENDED P.C.B LAYOUT

mat'l. code				surface ASME Y14.5	tolerance ASME Y14.5	projection 	product family TERMINAL BLOCK
ltr	ecn	no	dr	date			title
K				tolerances unless otherwise specified			TERMINAL BLOCK
				angles	$X. \pm 0.5[.020]$	$X.X \pm 0.3[.012]$	PLUGABLE, SOCKET, SIGNAL, VERTICAL
				$X^\circ \pm 1'$	$X.XX \pm 0.1[.004]$	scale	sheet 4 of 5 size
				dr	BEER FU	062509	20020107
				enr	BEER FU	062509	A4
				chr	GARY HSIEH	062509	type
				appd	JOSEPH HSIA	062509	CUSTOMER Drawing
sheet index	revision	sheet					

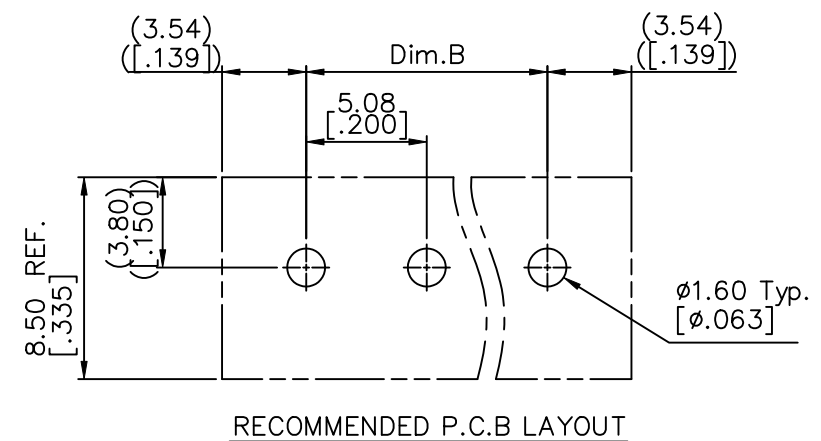
PRODUCT NUMBER	SERIES NAME	PITCH
20020107-HXXXXXXLF	06-508	5.08 mm





N = NUMBER OF POLES
DIMENSION

Dim A	$N \cdot 5.08[.200] + 2.0[.079]$
Dim B	$(N-1) \cdot 5.08[.200]$
Dim C	$(N-1) \cdot 5.08[.200]$

Poles	Tolerance
2p-6p	$\pm 0.15[.006]$
7p-12p	$\pm 0.25[.010]$
13p-16p	$\pm 0.35[.014]$
17p-24p	$\pm 0.40[.016]$



mat'l. code				surface ASME Y14.5 ✓		tolerance ASME Y14.5		projection 		product family TERMINAL BLOCK			
ltr		ecn no		dr		date		tolerances unless otherwise specified		title			
K								<div> <div>angles</div> <div>lineal</div> <div> X. ± 0.5 [.020] X.X ± 0.3 [.012] X± 1° X.XX ± 0.1 [.004] </div> </div>		<div> <div>MM</div> <div>[INCH]</div> </div>			
								scale		TERMINAL BLOCK PLUGABLE, SOCKET, SIGNAL, VERTICAL			
				dr		BEER FU		062509		dwg no <div> <div>20020107</div> <div>A4</div> </div>			
				enr		BEER FU		062509					
				chr		GARY HSIEH		062509					
				appd		JOSEPH HSIA		062509		type CUSTOMER Drawing			
sheet index		revision sheet											