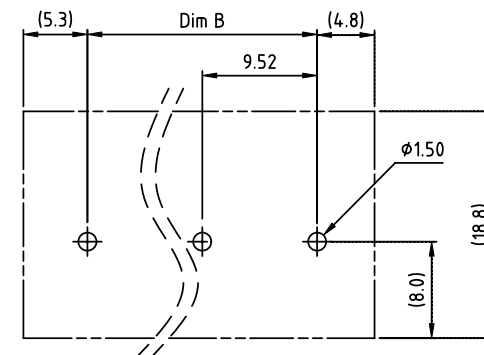
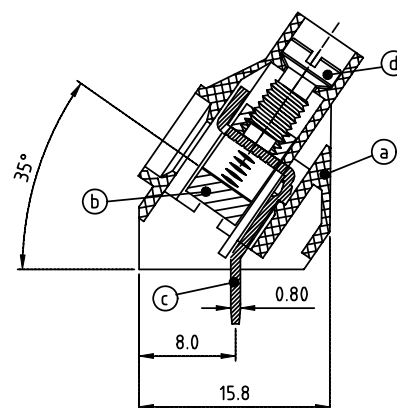
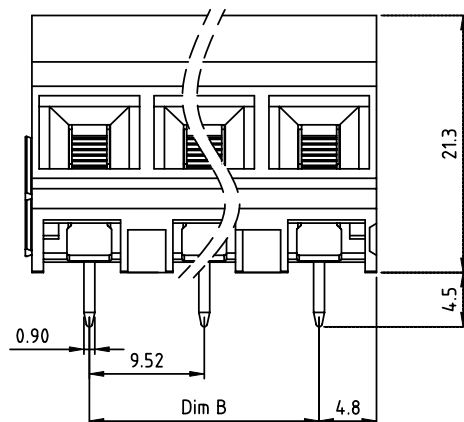
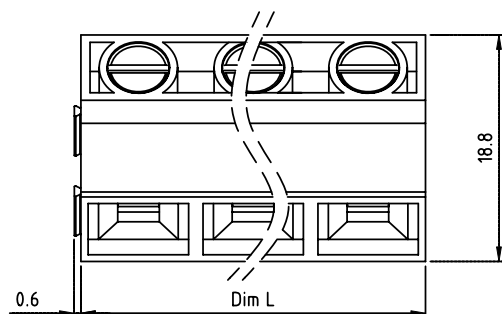


PRODUCT NUMBER	PITCH
T7xx23x100J0G	9.52 mm



RECOMMENDED P.C.B LAYOUT
TOP VIEW

Material:

- Item ① Terminal housing : Thermoplastic (UL 94V-0)
- Item ② Clamp: Brass ,Ni plated
- Item ③ Solder pin: Copper, Tin plated
- Item ④ Terminal screw: Steel Zinc plating"-slot type

Electrical cULus

- Voltage rating: 300VAC
- Current rating: 30A
- Wire range:
- Solid wire(AWG): 10-24
- Stranded wire(AWG): 10-24
- Torque: 6.9 Lb-in
- Screw: M3.5
- Wire strip length: 6-7mm
- Withstanding Voltage: 1.6KV
- Operating temperature: -40°C to +115°C
- Soldering temperature: 260°C±5°C/5 Sec
- Safety Approval:

TUV

- 750VAC
- 41A
- 0.20-6.0mm²
- 0.85 N.m

PART NO.: T7 xx 2 3 x 1 00J0 G

N = Number of poles

Dim L=Nx9.52

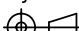


Dim B=(N-1)x9.52

Poles	Tolerance
2-6p	±0.20
7-11p	±0.30
12-16p	±0.40

End Stackable
No. of poles
02 2 poles
03 3 poles
...
16 16 poles

Body Color
0 Black (RAL9005)
2 Red (RAL3001/D)
3 Orange(RAL2011/P)
4 Yellow(RAL1018/A)
5 Green(RAL6018/T)
6 Blue (RAL5015/A)
8 Grey(RAL7035/D)
9 White(RAL1102)
C Green(RAL6018/U)

RoHS compliant
(lead<4%)
In copper Alloy

mat'l. code				surface ASME Y14.5		tolerance ASME Y14.5		projection 		product family TERMINAL BLOCK													
ltr ecn no dr date				tolerances unless otherwise specified						 MM		title TERMINAL BLOCK											
				angles		linear		X.±0.5				RISING CLAMP,35D WIRE INLET,END STACKABLE											
								X.X±0.3															
				X*±1"				X.XX±0.1		scale		dwg no sheet 1 of 1 size T7xx23x100J0G											
				dr		EVIN ZHONG		041414															
				enr		EVIN ZHONG		041414															
				chr		HANKE FENG		041414															
				appd		SHI JUN		041414															
sheet index		revision sheet		A 1																			